



2014

ANNUAL REPORT

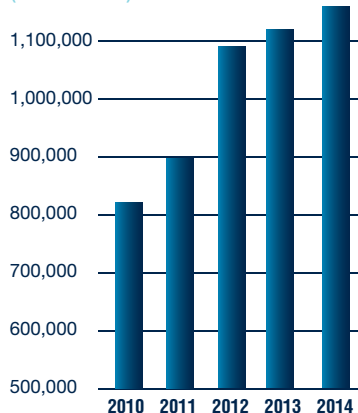
FINANCIAL HIGHLIGHTS

YEARS ENDED IN DECEMBER 31 (in thousands except per share data and employees)

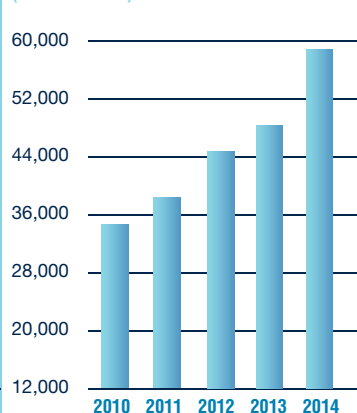
	2014*	2013	2012	2011	2010
Revenues	\$1,293,183	\$1,149,890	\$1,077,435	\$889,065	\$773,956
Net Income	\$58,850	\$47,129	\$44,214	\$38,156	\$34,441
Basic Earnings Per Common Share	\$0.83	\$0.68	\$0.65	\$0.57	\$0.52
Diluted Earnings Per Common Share	\$0.82	\$0.67	\$0.65	\$0.56	\$0.51
Cash Dividends Per Common Share	\$0.69	\$0.67	\$0.65	\$0.63	\$0.60
Weighted Average Number Of Common Shares Outstanding For Basic EPS	70,616	69,206	67,511	66,637	65,917
Weighted Average Number Of Common Shares Outstanding For Diluted EPS	71,341	70,045	68,485	67,485	67,008

AS OF DECEMBER 31	2014	2013	2012	2011	2010
Working Capital	\$216,869	\$210,089	\$200,182	\$186,734	\$181,244
Total Assets	\$469,579	\$425,342	\$331,183	\$289,695	\$277,934
Stockholders' Equity	\$275,830	\$285,143	\$229,570	\$217,726	\$213,079
Book Value Per Common Share	\$3.91	\$4.12	\$3.40	\$3.27	\$3.22
Employees	45,700	40,600	40,600	36,200	31,500

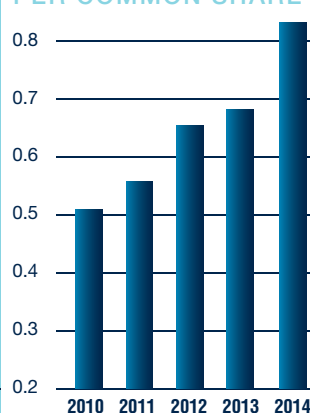
REVENUES
(in thousands)



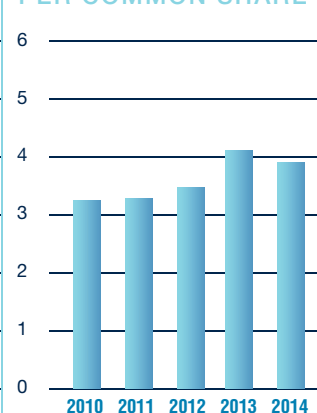
NET INCOME
(in thousands)



DILUTED EARNINGS PER COMMON SHARE



BOOK VALUE PER COMMON SHARE



*2014 Net Income and EPS exclude non-recurring charges

DEAR FELLOW SHAREHOLDERS

We are pleased to report that 2014 was another record year for Healthcare Services Group. The Company's operations improved across almost every key metric and our client footprint expanded in each of our 10 operating divisions. In the years ahead, we will continue to uphold the Company's founding principles of client service, professionalism, cost efficiency and growth, as they provide our leadership team with a clear path for future success.

Revenues for the year ended December 31, 2014 grew to \$1.3 billion, a 13% increase over 2013, which marks our thirty-eighth consecutive year of top line growth. We also achieved record results in adjusted net income and earnings per share, which increased to \$59 million and \$0.83, respectively. We shared the benefits of our strong financial performance with you through the cash dividend program – which returned over \$49 million of capital to shareholders this past year – continuing our trend of increasing cash dividend payments, for 46 consecutive quarters, since the initiation of the dividend program in 2003.

The demand for our services in both segments has never been greater, as the health care provider community faces significant uncertainty in both the regulatory environment and government reimbursement programs. Although the rate limiting factor on our growth continues to be the pace at which we are able to develop field-based management personnel, we remain committed to our comprehensive training programs, from orientation through maturation. Over the long term, our focus on management development and commitment to “promotion from within” remain our highest priorities as we prepare for the expansion opportunities that await.

Finally, in celebrating 2014, we wish to salute our facility, district, regional and divisional management. Their extraordinary leadership and service to our employees and client-partners help make us the Company we are today. Through them, and with your continued support, we look forward to another record year in 2015!

Sincerely,

Daniel P. McCartney
Chairman & Chief Executive Officer

Sincerely,

Theodore Wahl
President & Chief Operating Officer



CASH DIVIDEND PAYMENTS
IN 2014: \$.69 per common share in 2014, which represents a 2.2% yield based on the 2014 year end common share price.



PROVIDING SERVICES TO OVER 3,500 FACILITIES



NET INCOME & EARNINGS PER SHARE:
Adjusted net income increased to \$58.9 million or \$.82 per diluted common share, compared to 2013 adjusted net income of \$47.1 million or \$.67 per diluted common share.



REVENUES:
Revenues for 2014 grew to \$1.3 billion, an increase of 13% over the prior year.

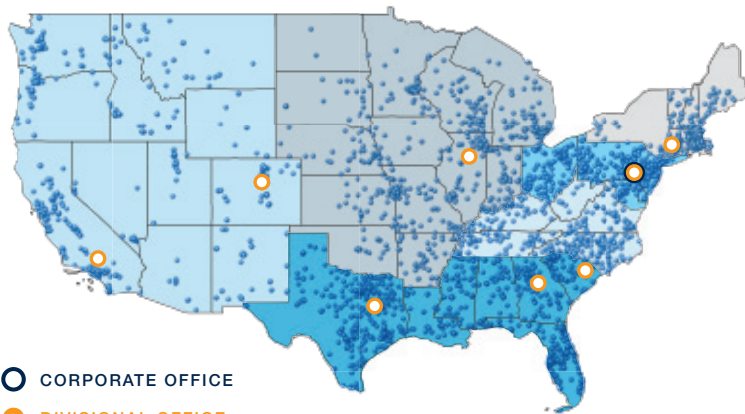
THE EXPERIENCE TO MAKE A DIFFERENCE

Today's challenging health care environment demands an experienced partner who can deliver innovative service solutions, while operating on budget. Healthcare Services Group has the experience and expertise to meet these needs, making us the preferred choice for hospital and senior living clients nationwide.

Our proactive approach to hospitality services delivers the solutions, performance and results that you need to increase your patients'/residents' satisfaction and improve your bottom line results. Our singular focus on the health care sector, as well as our expansive district and regional support network, gives us the flexibility to meet your individual needs within the financial parameters of your operating budget.

From innovative programs and services, to extensive training and quality assurance initiatives, to financial performance commitments, Healthcare Services Group keeps your patients/residents and your facility at the center of our focus, each and every day.

OUR GEOGRAPHICAL REACH



Since 1976, Healthcare Services Group has delivered exceptional housekeeping/laundry and dining/nutrition services to an ever-changing health care industry. Headquartered in Bensalem, PA with strategically located regional and district operations around the country, we provide professional management of ancillary services to a diverse mix of satisfied clients. Flexible and responsive, our people are trained to help you achieve success by delivering innovative solutions, exceptional performance and measurable results.

HEALTH CARE EXPERTISE

Healthcare Services Group exclusively partners with clients in the health care industry, providing programs and solutions that are specifically designed to address your business and market needs.



OUR SERVICES

HOUSEKEEPING DEPARTMENT MANAGEMENT:

LAUNDRY AND LINEN

Laundry and Linen services consist of laundering and processing the personal clothing of residents and patients, as well as the providing, collecting and laundering of sheets, pillow cases, blankets and other linen items used in a health care facility. Additionally, we work closely with the facility to design, install, operate and maintain an on-premise laundry.

HOUSEKEEPING

Housekeeping services consist of the cleaning, disinfecting and sanitizing of all areas in the facility, including resident and patient rooms, auxiliary areas, and main access areas such as the lobby, public rest rooms, offices and corridors. Through our district management structure and our on-site management team we provide continuous employee supervision, training and evaluation. We also conduct periodic testing for the purpose of infection control.

FACILITIES MAINTENANCE & PLANT MANAGEMENT

Facility maintenance & plant management services consist of the repair and preventive maintenance of the building and equipment at a specific facility.

DIETARY DEPARTMENT MANAGEMENT:

DINING AND NUTRITION

Dining and Nutrition Services consist of the development of a menu that meets the residents' and patients' dietary needs, purchasing and preparing the food to assure the residents and patients receive an appetizing meal, and participation in monitoring of residents' and patients' ongoing nutrition status. On-site management is responsible for all daily food service activities with regular support being provided by a district manager specializing in food service and a registered dietitian.

OUR GUIDELINES



OUR GOAL IS TO PROVIDE THE BEST SERVICE IN THE INDUSTRY

A health care facility derives many benefits from operating a spotlessly clean, aesthetically pleasing environment. Our staff is thoroughly trained to perform housekeeping, laundry, linen, facility management and dietary responsibilities with skill and sensitivity. Stringent quality-assurance standards insure that a facility will receive the most professional services in the industry.



WE CONCENTRATE ON WHAT WE DO BEST

Companies which diversify outside their core business often suffer diminishing returns. Healthcare Services Group, Inc. has prospered by providing exemplary housekeeping, laundry, linen, facility maintenance and dietary services to an increasing number of satisfied clients.



DEVELOP A STRONG AND WELL COORDINATED MANAGEMENT TEAM

The key to our client retention rate and orderly geographic expansion has been our ability to assemble the finest group of managers in the industry. Clients, who receive daily support from on-site management, are also actively supported by a Company District Manager who is in close proximity to the client. The development of experienced management back-up is reassuring to our owners and administrators. Reducing client costs while improving overall quality is a most challenging assignment. This objective is met by standardizing operating systems, maintaining strict controls through a quality-assurance program and planning efficient production schedules.

UNITED STATES SECURITIES AND EXCHANGE COMMISSION
Washington, D.C. 20549

Form 10-K

ANNUAL REPORT PURSUANT TO SECTION 13 OR 15(d) OF THE SECURITIES EXCHANGE ACT OF 1934

For the fiscal year ended December 31, 2014

TRANSITION REPORT PURSUANT TO SECTION 13 OR 15(d) OF THE SECURITIES EXCHANGE ACT OF 1934

For the transition period from _____ to _____
Commission file number: 0-12015

HEALTHCARE SERVICES GROUP, INC.

(Exact name of registrant as specified in its charter)

Pennsylvania

(State or other jurisdiction of
incorporated or organization)

23-2018365

(IRS Employer Identification No.)

3220 Tillman Drive, Suite 300, Bensalem, PA

(Address of principal executive offices)

19020

(Zip Code)

Registrant's telephone number, including area code:

(215) 639-4274

Securities registered pursuant to Section 12(b) of the 1934 Act:

Common Stock (\$.01 par value)

Title of Class

The NASDAQ Global Select Market

Name of each exchange on which securities registered

Indicate by check mark if the registrant is a well-known seasoned issuer, as defined in Rule 405 of the Securities Act. YES NO

Indicate by check mark if the registrant is not required to file reports pursuant to Section 13 or Section 15(d) of the Act. YES NO

Indicate by check mark whether the registrant (1) has filed all reports required to be filed by Section 13 or 15(d) of the Securities Exchange Act of 1934 during the preceding 12 months (or for such shorter period that the registrant was required to file such reports), and (2) has been subject to such filing requirements for the past 90 days. YES NO

Indicate by check mark whether the registrant has submitted electronically and posted on its corporate Web site, if any, every Interactive Data File required to be submitted and posted pursuant to Rule 405 of Regulation S-T (§232.405 of this chapter) during the preceding 12 months (or for such shorter period that the registrant was required to submit and post such files). YES NO

Indicate by check mark if disclosure of delinquent filers pursuant to Item 405 of Regulation S-K (§ 229.405 of this chapter) is not contained herein, and will not be contained, to the best of registrant's knowledge, in definitive proxy or information statements incorporated by reference in Part III of this Form 10-K or any amendment to this Form 10-K.

Indicate by check mark whether the registrant is a large accelerated filer, an accelerated filer, a non-accelerated filer, or a smaller reporting company. See the definitions of "large accelerated filer," "accelerated filer" and "smaller reporting company" in Rule 12b-2 of the Exchange Act.

Large accelerated filer Accelerated filer Non-accelerated filer Smaller reporting company

(Do not check if a smaller reporting company)

Indicate by check mark whether the registrant is a shell company (as defined in Rule 12b-2 of the Act). YES NO

The aggregate market value of the voting stock (Common Stock, \$.01 par value) held by non-affiliates of the Registrant as of the close of business on June 30, 2014 was approximately \$1,327,280,000 based on closing sale price of the Common Stock on the NASDAQ National Global Select on that date. The determination of affiliate status is not a determination for any other purpose. The Registrant does not have any non-voting common equity authorized or outstanding.

Indicate the number of shares outstanding of each of the registrant's classes of common stock (Common Stock, \$.01 par value) as of the latest practicable date (February 17, 2015). 71,261,000

DOCUMENTS INCORPORATED BY REFERENCE

Portions of the definitive Proxy Statement for the Registrant's Annual Meeting of Shareholders to be held on May 26, 2015 have been incorporated by reference into Parts II and III of this Annual Report on Form 10-K.

Healthcare Services Group, Inc.
Annual Report on Form 10-K
For the Fiscal Year Ended December 31, 2014

TABLE OF CONTENTS

PART I

Item 1.	Business	4
Item 1A.	Risk Factors	11
Item 1B.	Unresolved Staff Comments	16
Item 2.	Properties	16
Item 3.	Legal Proceedings	16
Item 4.	Mine Safety Disclosures	16

PART II

Item 5.	Market for Registrant’s Common Equity, Related Stockholder Matters and Issuer Purchases of Equity Securities	17
Item 6.	Selected Financial Data	19
Item 7.	Management’s Discussion and Analysis of Financial Condition and Results of Operations	19
Item 7A.	Quantitative and Qualitative Disclosures About Market Risk	34
Item 8.	Financial Statements and Supplementary Data	35
Item 9.	Changes in and Disagreements with Accountants on Accounting and Financial Disclosure	64
Item 9A.	Controls and Procedures	64
Item 9B.	Other Information	64

PART III

Item 10.	Directors, Executive Officers and Corporate Governance	65
Item 11.	Executive Compensation	65
Item 12.	Security Ownership of Certain Beneficial Owners and Management and Related Stockholder Matters	65
Item 13.	Certain Relationships and Related Transactions, and Director Independence	66
Item 14.	Principal Accountant Fees and Services	66

PART IV

Item 15.	Exhibits and Financial Statement Schedules	67
Exhibit Index		67
Signatures		68

CAUTIONARY STATEMENT REGARDING FORWARD-LOOKING STATEMENTS

This Form 10-K may contain forward-looking statements within the meaning of Section 27A of the Securities Act of 1933, as amended, and Section 21E of the Securities Exchange Act of 1934 (the “Exchange Act”), as amended, which are not historical facts but rather are based on current expectations, estimates and projections about our business and industry, our beliefs and assumptions. Words such as “believes,” “anticipates,” “plans,” “expects,” “will,” “goal,” and similar expressions are intended to identify forward-looking statements. The inclusion of forward-looking statements should not be regarded as a representation by us that any of our plans will be achieved. We undertake no obligation to publicly update or revise any forward-looking statements, whether as a result of new information, future events or otherwise. Such forward-looking information is also subject to various risks and uncertainties. Such risks and uncertainties include, but are not limited to, risks arising from our providing services exclusively to the health care industry, primarily providers of long-term care; credit and collection risks associated with this industry; having several significant clients who each individually contributed at least 3% with two as high as 6% to our total consolidated revenues for the year ended December 31, 2014; risks associated with our acquisition of Platinum Health Services, LLC; our claims experience related to workers’ compensation and general liability insurance; the effects of changes in, or interpretations of laws and regulations governing the industry, our workforce and services provided, including state and local regulations pertaining to the taxability of our services and other labor related matters such as minimum wage increases; tax benefits arising from our corporate reorganization and self-funded health insurance program transition; risks associated with the reorganization of our corporate structure; and the risk factors described in Part I in this report under “Government Regulation of Clients,” “Competition” and “Service Agreements/Collections,” and under Item IA “Risk Factors.”

These factors, in addition to delays in payments from clients and/or clients in bankruptcy or clients for which we are in litigation to collect payment, have resulted in, and could continue to result in, significant additional bad debts in the near future. Additionally, our operating results would be adversely affected if unexpected increases in the costs of labor and labor-related costs, materials, supplies and equipment used in performing services could not be passed on to our clients.

In addition, we believe that to improve our financial performance we must continue to obtain service agreements with new clients, provide new services to existing clients, achieve modest price increases on current service agreements with existing clients and maintain internal cost reduction strategies at our various operational levels. Furthermore, we believe that our ability to sustain the internal development of managerial personnel is an important factor impacting future operating results and successfully executing projected growth strategies.

PART I

In this Annual Report on Form 10-K for the year ended December 31, 2014, Healthcare Services Group, Inc. (together with its wholly-owned subsidiaries, included in Exhibit 21 which has been filed as part of this Report) is referred to as the "Company," "we," "us" or "our."

Item I. Business.

General

The Company is a Pennsylvania corporation, incorporated on November 22, 1976. We provide management, administrative and operating expertise and services to the housekeeping, laundry, linen, facility maintenance and dietary service departments of the health care industry, including nursing homes, retirement complexes, rehabilitation centers and hospitals located throughout the United States. Based on the nature and similarities of the services provided, our business operations consist of two business segments (Housekeeping and Dietary). We believe we are the largest provider of our services to the long-term care industry in the United States, rendering such services to over 3,500 facilities in 48 states as of December 31, 2014. We provide our Housekeeping services to essentially all client facilities and provide Dietary services to over 900 of such facilities. Although we do not directly participate in any government reimbursement programs, our clients' reimbursements are subject to government regulation. Therefore, they are directly affected by any legislation and regulations relating to Medicare and Medicaid reimbursement programs.

Segment Information

The information called for herein is discussed below in Description of Services, and within Item 8 of this Annual Report on Form 10-K under Note 14 of Notes to Consolidated Financial Statements for the years ended December 31, 2014, 2013 and 2012.

Description of Services

We provide management, administrative and operating expertise and services to the housekeeping, laundry, linen, facility maintenance and dietary service departments of the health care industry.

We are organized into, and provide our services through two reportable segments: housekeeping, laundry, linen and other services ("Housekeeping"), and dietary department services ("Dietary"). The operating results from our professional employer organization ("PEO") service contracts are included primarily in our Housekeeping segment as these services include housekeeping and laundry personnel. The Company's corporate headquarters provides centralized financial management and administrative services to the Housekeeping and Dietary business segments.

Housekeeping consists of managing the client's housekeeping department which is principally responsible for the cleaning, disinfecting and sanitizing of patient rooms and common areas of a client's facility, as well as the laundering and processing of the personal clothing belonging to the facility's patients. Also within the scope of this segment's service is the responsibility for laundering and processing the bed linens, uniforms and other assorted linen items utilized by a client facility.

Dietary consists of managing the client's dietary department which is principally responsible for food purchasing, meal preparation and providing professional dietitian consulting services, which includes the development of a menu that meets the patient's dietary needs.

Both segments provide our services primarily pursuant to full service agreements with our clients. In such agreements, we are responsible for the management and hourly employees located at our clients' facilities. We also provide services on the basis of a management-only agreement for a very limited number of clients. Our agreements with clients typically provide for renewable one year service terms, cancelable by either party upon 30 to 90 days' notice after the initial 90-day period.

Our labor force is interchangeable with respect to each of the services within Housekeeping. Our labor force with respect to Dietary is specific to it. There are many similarities in the nature of the services performed by each segment. However, there are some differences in the specialized expertise required of the professional management personnel responsible for delivering the services of the respective segments. We believe the services of each segment provide opportunity for growth.

An overview of each of our segments follows:

Housekeeping

Housekeeping services. Housekeeping services is our largest service sector, representing approximately 46% or \$589,820,000 of consolidated revenues in 2014. This service involves the management of the client's housekeeping department which is principally responsible for the cleaning, disinfecting and sanitizing resident areas in our clients' facilities. In providing services to any given client facility, we typically hire and train the hourly employees employed by such facility. We normally assign two on-site managers to each facility to supervise and train hourly personnel and coordinate housekeeping services with other facility support functions in accordance with the direction provided by the client facility's administrator. Such management personnel also oversee the execution of a variety of quality and cost-control procedures including continuous training and employee evaluation and on-site testing for infection control. The on-site management team also assists the facility in complying with federal, state and local regulations.

Laundry and linen services. Laundry and linen services represented approximately 19% or \$254,777,000 of consolidated revenues in 2014. Laundry services are under the responsibilities of the housekeeping department and involve the laundering and processing of the residents' personal clothing. We provide laundry services to mostly all of our housekeeping clients. Linen services involve providing, laundering and processing of the sheets, pillow cases, blankets, towels, uniforms and assorted linen items used by our clients' facilities. At some facilities that utilize our laundry and linen services, we install our own equipment. Such installation generally requires an initial capital outlay by us ranging from \$5,000 to \$100,000 depending on the size of the facility, installation and construction costs, and the cost of equipment required. We could incur relocation or other costs in the event of the cancellation of a linen service agreement where there was an investment by us in a corresponding laundry installation. The hiring, training and supervision of the hourly employees who perform laundry and linen services are similar to, and performed by the same management personnel who oversee the housekeeping services hourly employees located at the respective client facility. In some instances we own linen supplies utilized at our clients' facilities and therefore, maintain a sufficient inventory of linen supplies to ensure their availability.

Maintenance and other services. Maintenance services consist of repair and maintenance of laundry equipment, plumbing and electrical systems, as well as carpentry and painting. This service sector's total revenues of \$2,013,000 represented less than 1% of consolidated revenues in 2014.

Laundry installation sales. We (as a distributor of laundry equipment) sell laundry installations to our clients, which typically represents the construction and installation of a turn-key operation. We generally offer payment terms, ranging from 36 to 60 months. During the years 2012 through 2014, laundry installation sales were not material to our operating results as we prefer to own such laundry installations in connection with performance of our service agreements.

Housekeeping operating performance is significantly impacted by our management of labor costs. Labor accounted for approximately 81% of operating costs incurred at a facility service location, as a percentage of Housekeeping revenues. Changes in employee compensation resulting from legislative or other actions, anticipated staffing levels, and other unforeseen variations in our use of labor at a client service location will result in volatility of these costs. Additionally, the costs of supplies consumed in performing Housekeeping services, including linen costs, are affected by product specific market conditions and therefore subject to price volatility. Generally, this volatility is influenced by factors outside our control and is unpredictable. Where possible, we try to obtain fixed pricing from vendors for an extended period of time on certain supplies to mitigate such price volatility. Although we endeavor to pass on increases in our labor and supply costs to our clients, the inability to attain such increases may negatively impact Housekeeping's profit margins.

PEO services. Through the Company's wholly-owned subsidiary, HCSG Staff Leasing Solutions, LLC ("Staff Leasing"), we enter into a client services agreement to become a co-employer of the client's existing workforce, assuming responsibility for payroll, payroll taxes, insurance coverage and certain other administrative functions, while the client maintains physical care, custody and control of their workforce, including the authority to hire and terminate employees. Our services include housekeeping and laundry personnel and are provided to clients in the health care industry. As of December 31, 2014, we have PEO service contracts in several states. During the years 2012 through 2014, operating results from our PEO service contracts were not material.

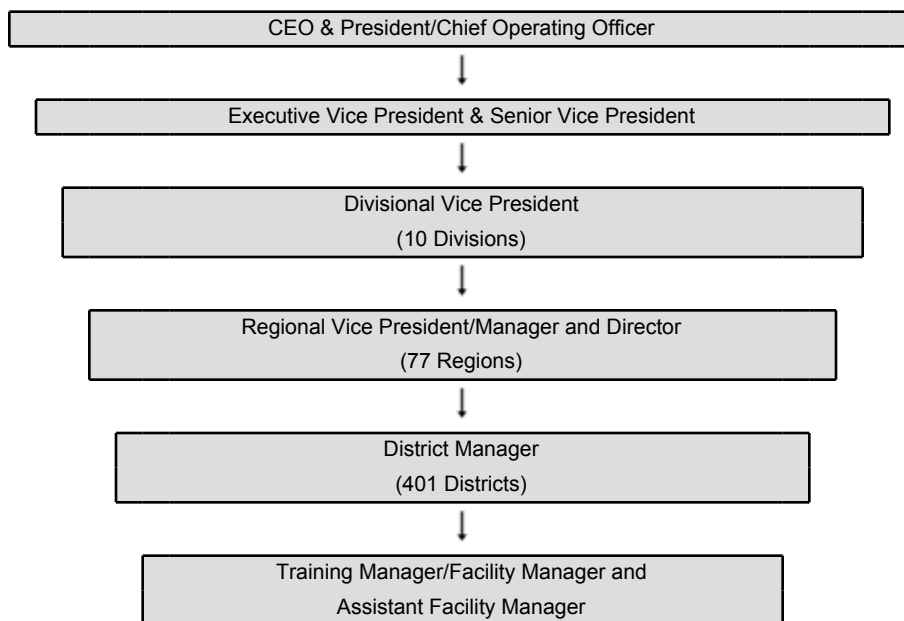
Dietary

Dietary services. Dietary services represented approximately 35% or \$446,573,000 of consolidated revenues in 2014. Dietary consists of managing the client's dietary department which is principally responsible for food purchasing, meal preparation and providing professional dietitian consulting services, which includes the development of a menu that meets the patient's dietary needs. On-site management is responsible for all daily dietary department activities, with regular support being provided by a district manager specializing in dietary services, as well as a registered dietitian. We also offer consulting services to facilities to assist them in cost containment and to promote improvement in their dietary department service operations.

Dietary operating performance is also impacted by price volatility in labor and supply costs resulting from similar factors discussed above in Housekeeping. The primary difference in impact on Dietary operations from price volatility in costs of labor and food-related supplies is that such costs represent approximately 51% and 41% of Dietary revenues, respectively. In contrast, labor is approximately 81% of operating costs as a percentage of Housekeeping revenue.

Operational Management Structure

By applying our professional management techniques, we generally can contain or control certain housekeeping, laundry, linen, facility maintenance and dietary service costs on a continuing basis. We manage and provide our services through a network of management personnel, as illustrated below.



Each facility is generally managed by an on-site Facility Manager, an Assistant Facility Manager, and if necessary, additional supervisory personnel. Districts, typically consisting of eight to twelve facilities, are supported by a District Manager and a Training Manager. District Managers bear overall responsibility for the facilities within their districts. They are generally based in close proximity to each facility. These managers provide active support to clients in addition to the support provided by our on-site management team. Training Managers are responsible for the recruitment, training and development of Facility Managers. A division consists of a number of regions within a specific geographical area. Divisional Vice Presidents manage each division. At December 31, 2014 we had 77 regions within 10 divisions. Each region is headed by a Regional Vice President/Manager. Most regions also have a Regional Director who assumes primary responsibility for marketing our services within the respective region. Regional Vice Presidents/Managers and Directors provide management support to a number of districts within a specific geographical area. Regional Vice Presidents/Managers and Directors report to Divisional Vice Presidents who in turn report to Senior Vice Presidents and/or Executive Vice Presidents. We believe that our divisional, regional and district organizational structure facilitates our ability to best serve, and/or sell additional services to, our existing clients, as well as obtain new clients.

Market

The market for our services consists of a large number of facilities involved in various aspects of the health care industry, including long-term and post-acute care facilities (skilled nursing facilities, residential care and assisted living facilities, etc.) and hospitals (acute care, critical access, psychiatric, etc.).

These facilities primarily range in size from small private facilities to facilities with over 500 beds. Such facilities may be specialized or general, privately owned or public, profit or not-for-profit, and may serve patients on a long-term or short-term basis. We market our services to such facilities after consideration of a variety of factors including facility type, size, location, and service (Housekeeping or Dietary). The market for our services, particularly in long-term and post-acute care, is expected to continue to grow as the elderly population increases as a percentage of the United States population and as government reimbursement policies require increased control or containment by the constituents that comprise our target market.

Marketing and Sales

Our services are marketed at four levels of our organization: at the corporate level by the Chief Executive Officer, President & Chief Operating Officer, Executive Vice Presidents and Senior Vice Presidents; at the divisional level by Divisional Vice Presidents; at the regional level by the Regional Vice Presidents/Managers and Directors; and at the district level by District Managers. We provide incentive compensation to our operational personnel based on achieving financial and non-financial goals and objectives which are aligned with the key elements the Company believes are necessary for it to achieve overall improvement in its financial results, along with continued business development.

Our services are marketed primarily through referrals and in-person solicitation of target facilities. We also utilize direct mail campaigns and participate in industry trade shows, health care trade associations and healthcare support service seminars that are offered in conjunction with state or local health authorities in many of the states in which we conduct our business. Our programs have been approved for continuing education credits by state nursing home licensing boards in certain states, and are typically attended by facility owners, administrators and supervisory personnel, thus presenting marketing opportunities for us. Indications of interest in our services arising from initial marketing efforts are followed up with a presentation regarding our services and an assessment of the service requirements of the facility. Thereafter, a formal proposal, including operational recommendations and recommendations for proposed savings, is submitted to the prospective client. Once the prospective client accepts the proposal and signs the service agreement, we can set up our operations on-site within days.

Government Regulation of Clients

Our clients are subject to government regulation. Congress has enacted a number of major laws during the past several years that have significantly altered or will alter government reimbursement for nursing home services, including the Patient Protection and Affordable Care Act and the Health Care and Education Reconciliation Act of 2010. In July 2011, Centers for Medicare and Medicaid Services (“CMS”) issued a final rule that reduced Medicare payments to nursing centers by 11.1% and changed the reimbursement for the provision of group rehabilitation therapy services to Medicare beneficiaries. This new rule was effective as of October 1, 2011. Furthermore, in the coming year and beyond, new proposals or additional changes in existing regulations could be made which could directly impact the governmental reimbursement programs in which our clients participate. As a result, some state Medicaid programs are reconsidering previously approved increases in nursing home reimbursement or are considering delaying or foregoing those increases. A few states have indicated it is possible they will run out of cash to pay Medicaid providers, including nursing homes.

In January 2013, the U.S. Congress enacted the American Taxpayer Relief Act of 2012, which delayed automatic spending cuts of \$1.2 trillion, including reduced Medicare payments to plans and providers up to 2%. These discretionary spending caps were originally enacted under provisions in the Budget Control Act of 2011, an initiative to reduce the federal deficit through the year 2021, also known as “sequestration.” The sequestration went into effect starting March 2013. In December 2013, the U.S. Congress enacted the Bipartisan Budget Act of 2013, which reduces the impact of the sequestration over the next two years. This began in fiscal year 2014 and extended the reduction in Medicare payments to plans and providers for two years through the year 2023.

Although laws and rulings directly affect how clients are paid for certain services, we do not directly participate in any government reimbursement programs. Accordingly, all of our contractual relationships with our clients continue to determine the clients' payment obligations to us. However, because clients' revenues are generally highly reliant on Medicare and Medicaid reimbursement funding rates, the overall effect of these laws and trends in the long term care industry have affected and could adversely affect the liquidity of our clients, resulting in their inability to make payments to us on agreed upon payment terms (See "Liquidity and Capital Resources" included in our "Management's Discussion and Analysis of Financial Condition and Results of Operations").

The prospects for legislative action, both on the federal and state level (particularly in light of current economic environment affecting government budgets), regarding funding for nursing homes are uncertain. We are unable to predict or to estimate the ultimate impact of any further changes in reimbursement programs affecting our clients' future results of operations and/or their impact on our cash flows and operations.

Environmental Regulation

The Company's operations are subject to various federal, state and/or local laws concerning emissions into the air, discharges into the waterways and the generation, handling and disposal of waste and hazardous substances. The Company's past expenditures relating to environmental compliance have not had a material effect on the Company and are included in normal operating expenses. These laws and regulations are constantly evolving, and it is impossible to predict accurately the effect they may have upon the capital expenditures, earnings and competitive position of the Company in the future. Based upon information currently available, management believes that expenditures relating to environmental compliance will not have a material impact on the financial position of the Company for the foreseeable future.

Service Agreements and Collections

We provide our services primarily pursuant to full service agreements with our clients. In such agreements, we are responsible for our management and hourly employees located at clients' facilities. We provide services on the basis of a management agreement for a very limited number of clients. In such agreements, our services are comprised of providing on-site management personnel, while the hourly and staff personnel remain employees of the respective client.

We typically adopt and follow the client's employee wage structure, including its policy of wage rate increases, and pass through to the client any labor cost increases associated with wage rate adjustments. Under a management agreement, we provide management and supervisory services while the client facility retains payroll responsibility for its hourly employees. Substantially all of our agreements are full service agreements. These agreements typically provide for renewable one year terms, cancelable by either party upon 30 to 90 days' notice after the initial 90-day period. As of December 31, 2014, we provided services to over 3,500 client facilities.

Although the service agreements are cancelable on short notice, we have historically had a favorable client retention rate and expect to continue to maintain satisfactory relationships with our clients. The risks associated with short-term service agreements have not materially affected either our linen and laundry services, which may from time-to-time require capital investment, or our laundry installation sales, which may require us to finance the sales price. Such risks are often mitigated by certain provisions set forth in the agreements entered into with our clients.

State Medicaid programs are experiencing increased demand, and with lower revenues than projected, they have fewer resources to support their Medicaid programs. In addition, Federal health reform legislation has been enacted that would significantly expand state Medicaid programs. As a result, some state Medicaid programs are reconsidering previously approved increases in nursing home reimbursement or are considering delaying those increases. A few states have indicated it is possible they will run out of cash to pay Medicaid providers, including nursing homes. Any of these changes would adversely affect the liquidity of our clients, resulting in their inability to make payments to us as agreed upon.

In 2009 and 2010, Federal economic stimulus legislation was enacted to counter the impact of the economic crisis on state budgets. The legislation included the temporary provision of additional federal matching funds to help states maintain their Medicaid programs. This legislation provided states with an extension of this fiscal relief through June 2011, but at a reduced reimbursement rate. In July 2011, CMS issued a final rule that reduced Medicare payments to nursing centers by 11.1% and changed the reimbursement for the provision of group rehabilitation therapy services to Medicare beneficiaries. This new rule was effective as of October 1, 2011. In January 2013, the U.S. Congress enacted the American Taxpayer Relief Act of 2012, which delayed automatic spending cuts of \$1.2 trillion, including reduced Medicare payments to plans and providers up to 2%. These discretionary spending caps were originally enacted under provisions in the Budget Control Act of 2011, an initiative to reduce the federal deficit through the year 2021, also known as “sequestration.” The sequestration went into effect starting March 2013. In December 2013, the U.S. Congress enacted the Bipartisan Budget Act of 2013, which reduces the impact of the sequestration over the next two years. This began in fiscal year 2014 and extended the reduction in Medicare payments to plans and providers for two years through the year 2023. Even if federal or state legislation is enacted to provide additional funding to Medicaid providers, given the volatility of the economic environment, it is difficult to predict the impact of this legislation on our clients’ liquidity and their ability to make payments to us as agreed upon.

We have had varying collection experience with respect to our accounts and notes receivable. When contractual terms are not met, we generally encounter difficulty in collecting amounts due from certain of our clients. Therefore, we have sometimes been required to extend the period of payment for certain clients beyond contractual terms. These clients include those who have terminated service agreements and slow payers experiencing financial difficulties. In order to provide for these collection problems and the general risk associated with the granting of credit terms, we have recorded bad debt provisions (in an Allowance for Doubtful Accounts) of \$4,470,000, \$1,990,000 and \$2,160,000 in the years ended December 31, 2014, 2013 and 2012, respectively (See Schedule II - Valuation and Qualifying Accounts and Reserves, for year-end balances). As a percentage of total revenues, these provisions represented approximately 0.3% for the year ended December 31, 2014 and 0.2% for the each of the years ended December 31, 2013 and 2012. In making our credit evaluations, in addition to analyzing and anticipating, where possible, the specific cases described above, we consider the general collection risk associated with trends in the long-term care industry. We also establish credit limits, perform ongoing credit evaluation and monitor accounts to minimize the risk of loss. Notwithstanding our efforts to minimize credit risk exposure, our clients could be adversely affected if future industry trends change in such a manner as to negatively impact their cash flows, as discussed in “Government Regulation of Clients” and “Risk Factors” in this report. If our clients experience a negative impact in their cash flows, it would have a material adverse effect on our consolidated results of operations and financial condition.

Competition

We compete primarily with the in-house support service departments of our potential clients. Most healthcare facilities perform their own support service functions without relying upon outside management firms. In addition, a number of local firms compete with us in the regional markets in which we conduct business. Several national service firms are larger and have greater financial and marketing resources than us, although historically, such firms have concentrated their marketing efforts primarily on hospitals, rather than the long-term care facilities typically serviced by us. Although the competition to provide service to health care facilities is strong, we believe that we compete effectively for new agreements, as well as renewals of existing agreements, based upon the quality and dependability of our services and the cost savings we believe we can usually implement for existing and new clients.

Employees

At December 31, 2014, we employed approximately 8,600 management, office support and supervisory personnel. Of these employees, approximately 600 held executive, regional/district management and office support positions, and approximately 8,000 of these employees were on-site management personnel. On such date, we employed approximately 37,100 hourly employees. Many of our hourly employees were previously support employees of our clients. We manage, for a very limited number of our client facilities, the hourly employees who remain employed by those clients.

Approximately 21% of our hourly employees are unionized. The majority of these employees are subject to collective bargaining agreements that are negotiated by individual client facilities and are assented to us, so as to bind us as an “employer” under the agreements. We may be adversely affected by relations between our client facilities and the employee unions. We are also a direct party to negotiated collective bargaining agreements covering a limited number of employees at a few facilities serviced by us. We consider our relationship with our employees to be good.

Financial Information about Geographic Areas

Our Housekeeping segment provides services in Canada, although essentially all of its revenues and net income, 99% in each category, are earned in one geographic area, the United States. The Dietary segment provides services only in the United States.

Available Information

Healthcare Services Group, Inc. is a reporting company under the Securities Exchange Act of 1934, as amended, and files reports, proxy statements and other information with the Securities and Exchange Commission (the “Commission” or “SEC”). The public may read and copy any of our filings at the Commissioner’s Public Reference Room at 100 F Street, N.E., Washington, D.C. 20549. You may obtain information on the operation of the Public Reference Room by calling the Commission at 1-800-SEC-0330. Additionally, because we make filings to the Commission electronically, you may access this information at the Commission’s internet site: www.sec.gov. This site contains reports, proxies and information statements and other information regarding issuers that file electronically with the Commission.

Website Access

Our website address is www.hcsg.com. Our filings with the Commission, as well as other pertinent financial and Company information are available at no cost on our website as soon as reasonably practicable after the filing of such reports with the Commission.

Item 1A. Risk Factors.

You should carefully consider the risk factors we have described below, as well as other related information contained within this annual report on Form 10-K because these factors could cause the actual results and our financial condition to differ materially from those projected in forward-looking statements. We believe that the risks described below are our most significant risk factors but there may be risks and uncertainties that are not currently known to us or that we currently deemed to be immaterial. Therefore, any such unknown or deemed immaterial risks and uncertainties, as well as those noted below could materially adversely affect our business, financial condition or results of operations and cash flows.

We provide services to several clients which contribute significantly, on an individual, as well as aggregate basis, to our total revenues.

We have several clients who each have made a contribution to our total consolidated revenues ranging from 3% to 6%. Although we expect to continue the relationship with these clients, there can be no assurance thereof. The loss, individually or in combination, of such clients, or a significant reduction in the revenues we receive from such clients, could have a material adverse effect on the results of operations of our two operating segments. In addition, if any of these clients change or alter current payment terms it could increase our accounts receivable balance and have a material adverse effect on our cash flows and cash and cash equivalents.

Our clients are concentrated in the health care industry which is currently facing considerable legislative proposals to reform it. Many of our clients rely on reimbursement from Medicare, Medicaid and other third-party payors. Rates from such payors may be altered or reduced, thus affecting our Clients' results of operations and cash flows.

We provide our services primarily to providers of long-term and post-acute care. In March 2010, the U.S. Congress enacted the Patient Protection and Affordable Care Act and the Health Care and Education Reconciliation Act of 2010 (together, the "Act"), and is considering further legislation to reform healthcare in the United States which could significantly impact our clients. In July 2011, CMS issued final rulings which, among other things, reduced, effective October 1, 2011, Medicare payments to nursing centers by 11.1% and changed the reimbursement for the provision of group rehabilitation therapy services to Medicare beneficiaries. In January 2013, the U.S. Congress enacted the American Taxpayer Relief Act of 2012, which delayed automatic spending cuts of \$1.2 trillion, including reduced Medicare payments to plans and providers up to 2%. These discretionary spending caps were originally enacted under provisions in the Budget Control Act of 2011, an initiative to reduce the federal deficit through the year 2021, also known as "sequestration." The sequestration went into effect starting March 2013. In December 2013, the U.S. Congress enacted the Bipartisan Budget Act of 2013, which reduces the impact of the sequestration over the next two years. This began in fiscal year 2014 and extended the reduction in Medicare payments to plans and providers for two years through the year 2023. Some states have enacted or are considering enacting measures designed to reduce their Medicaid expenditures. We cannot predict what efforts, and to what extent, such legislation and proposals to contain healthcare costs will ultimately impact our clients' revenues through reimbursement rate modifications. Congress has enacted a number of major laws during the past decade that have significantly altered, or may alter, overall government reimbursement for nursing home services. Because our clients' revenues are generally highly reliant on Medicare, Medicaid and other third-party payors' reimbursement funding rates and mechanisms, the overall effect of these laws and trends in the long term care industry have affected and could adversely affect the liquidity of our clients, resulting in their inability to make payments to us on agreed upon payment terms. These factors, in addition to delays in payments from clients have resulted in, and could continue to result in, significant additional bad debts in the future.

Federal health care reform legislation's eventual impact, including requiring most individuals to have health insurance and establish new regulation on health plans, may adversely affect our operating costs and results of operations.

The Act includes a large number of health-related provisions that become effective over the next several years, including requiring most individuals to have health insurance and establishing new regulations on health plans. While much of the cost of the recent healthcare legislation enacted will begin in 2015 due to provisions of the legislation being phased in over time, changes to our healthcare cost structure could have an impact on our operating costs. Providing such additional health insurance benefits to our employees or the payment of penalties if such coverage is not provided, would increase our expense. If we are unable to pass-through these charges to our clients to cover this expense, such increases in expense could adversely impact our operating costs and results of operations.

In addition, under the Act, employers will have to file a significant amount of additional information with the Internal Revenue Service. These and other requirements related to compliance under the Act could result in increased costs, expanded liability exposure, and other changes in the ways we provide healthcare and other benefits to our employees.

We have clients located in many states which have had and may continue to experience significant budget deficits and such deficits may result in reduction of reimbursements to nursing homes.

Many states, in which our clients are located, have significant budget deficits as a result of lower than projected revenue collections and increased demand for the funding of entitlements. As a result of these and other adverse economic factors, state Medicaid programs are reconsidering previously approved increases in nursing home reimbursement or are considering delaying those increases. Some states have over the past year indicated they may be unable to make entitlement payments, including Medicaid payments to nursing homes. Any disruption or delay in the distribution of Medicaid and related payments to our clients will adversely affect their liquidity and impact their ability to pay us as agreed upon for the services provided.

The Company has substantial investment in the creditworthiness and financial condition of our customers.

The largest current asset on our balance sheet is our accounts and notes receivable balances from our customers. We grant credit to substantially all of our customers. Deterioration in financial condition across a significant component of our customer base could hinder our ability to collect amounts from our customers. The potential causes of such decline include national or local economic downturns, customers' dependence on continued Medicare and Medicaid funding and the impact of additional regulatory actions. When contractual terms are not met, we generally encounter difficulty in collecting amounts due from certain of our clients. Therefore, we have sometimes been required to extend the period of payment for certain clients beyond contractual terms. These clients include those who have terminated service agreements and slow payers experiencing financial difficulties. In making our credit evaluations, in addition to analyzing and anticipating, where possible, the specific cases described above, we consider the general collection risk associated with trends in the long-term care industry. We also establish credit limits, perform ongoing credit evaluation and monitor accounts to minimize the risk of loss. Notwithstanding our efforts to minimize credit risk exposure, our clients could be adversely affected if future industry trends change in such a manner as to negatively impact their cash flows. If our clients experience a negative impact in their cash flows, it would have a material adverse effect on our consolidated results of operations, financial condition and cash flows.

We have a Paid Loss Retrospective Insurance Plan for general liability and workers' compensation insurance.

We self-insure or carry a high deductible, and therefore retain a substantial portion of the risk associated with the expected losses under our general liability and workers' compensation programs. Under our insurance plans for general liability and workers' compensation, predetermined loss limits are arranged with our insurance company to limit both our per occurrence cash outlay and annual insurance plan cost. We regularly evaluate our claims pay-out experience and other factors related to the nature of specific claims in arriving at the basis for our accrued insurance claims estimate. Our evaluation is based primarily on current information derived from reviewing our claims experience and industry trends. In the event that our known claims experience and/or industry trends result in an unfavorable change in initial estimates of costs to settle such claims resulting from, among other factors, the severity levels of reported claims and medical cost inflation, it would have an adverse effect on our consolidated results of operations, financial condition and cash flows. During 2014, the Company recorded a one-time, non-cash adjustment of \$37,416,000 related to a change in estimate related to a change in reserve methodology through the utilization of a third party actuary. Although we engage third-party experts to assist us in estimating appropriate insurance accounting reserves, the determination of the required reserves is dependent upon significant actuarial judgments that have a material impact on our reserves. Changes in our insurance reserves as a result of our periodic evaluation of the related liabilities may cause significant volatility in our operating results.

Federal, State and Local tax rules can adversely impact our results of operations and financial position.

We are subject to Federal, State and Local taxes in the United States and Canada. Significant judgment is required in determining the provision of income taxes. We believe our income tax estimates are reasonable. Although, if the Internal Revenue Service or other taxing authority disagrees with a taken tax position and upon final adjudication we are unsuccessful, we could incur additional tax liability, including interest and penalty. Such costs and expenses could have a material adverse impact on our results of operations and financial position. Additionally, the taxability of our services is subject to various interpretations within the taxing jurisdictions of our markets. Consequently, in the ordinary course of business, a jurisdiction may contest our reporting positions with respect to the application of its tax code to our services. A jurisdiction's conflicting position on the taxability of our services could result in additional tax liabilities which we may not be able to pass on to our clients or could negatively impact our competitive position in the respective location. Additionally, if we fail to comply with applicable tax laws and regulations we could suffer civil or criminal penalties in addition to the delinquent tax assessment. In the taxing jurisdictions where our services have been determined to be subject to tax, the jurisdiction may increase the tax rate assessed on such services. We endeavor to pass-through to our clients such tax increases. In the event we are not able to pass-through any portion of the tax increase, our gross margin could be adversely impacted.

Our business and financial results could be adversely affected by unfavorable results of material litigation or governmental inquiries.

We are currently involved in civil litigations and government inquiries which arise in the ordinary course of business. These matters relate to, among other things, general liability, payroll or employee-related matters, as well as inquiries from governmental agencies. Legal actions could result in substantial monetary damages as well as adversely affect our reputation and business status with our clients whether we are ultimately determined to be liable or not. The outcome of litigation, particularly class action and collective action lawsuits and regulatory actions, is difficult to assess or quantify. The plaintiffs in these types of actions may seek recovery of very large or indeterminate amounts, and such amounts may remain unknown for substantial periods of time.

We assess contingencies to determine the degree of probability and range of possible loss of potential accrual in our financial statements. We would accrue an estimated loss contingency in our financial statements if it were probable that a liability had been incurred and the amount of the loss could be reasonably estimated. Due to the unpredictable and unfavorable nature of litigation, assessing contingencies is highly subjective and requires judgments about future events. The amount of actual losses may differ from our current assessment. As a result of the costs and expenses of defending ourselves against lawsuits or claims, and risks and consequences of legal actions, regardless of merit, our results of operations and financial position could be adversely affected or cause variability in our results compared to expectations.

We primarily provide our services pursuant to agreements which have a one year term, cancelable by either party upon 30 to 90 days' notice after the initial 90-day service agreement period.

We do not enter into long-term contractual agreements with our clients for the rendering of our services. Consequently, our clients can unilaterally decrease the amount of services we provide or terminate all services pursuant to the terms of our service agreements. Any loss of a significant number of clients during the first year of providing services, for which we have incurred significant start-up costs or invested in an equipment installation, could in the aggregate materially adversely affect our consolidated results of operations and financial position.

The Company's business success depends on the management experience of our key personnel.

We manage and provide our services through a network of management personnel, from the on-site facility manager up to our executive officers. Therefore, we believe that our ability to recruit and sustain the internal development of managerial personnel is an important factor impacting future operating results and our ability to successfully execute projected growth strategies. Our professional management personnel are the key personnel in maintaining and selling additional services to current clients and obtaining new clients.

We may be adversely affected by inflationary or market fluctuations in the cost of products consumed in providing our services or our cost of labor. Additionally, we rely on certain vendors for housekeeping, laundry and dietary supplies.

The prices we pay for the principal items we consume in performing our services are dependent primarily on current market prices. We have consolidated certain supply purchases with national vendors through agreements containing negotiated prospective pricing. In the event such vendors are not able to comply with their obligations under the agreements and we are required to seek alternative suppliers, we may incur increased costs of supplies.

Dietary supplies, to a much greater extent than Housekeeping supplies, are impacted by commodity pricing factors, which in many cases are unpredictable and outside of our control. Although we endeavor to pass on to clients such increased costs, from time to time, sporadic unanticipated increases in the costs of certain supply items due to market economic conditions may result in a timing delay in passing on such increases to our clients. It is this type of spike in Dietary supplies' costs that could most adversely affect Dietary's operating performance. The adverse effect would be realized if we delay in passing on such costs to our clients or in instances where we may not be able to pass such increase on to our clients until the time of our next scheduled service billing review. We endeavor to mitigate the impact of unanticipated increase in such supplies' costs through consolidation of vendors, which increases our ability to obtain reduced pricing.

Our cost of labor may be influenced by unanticipated factors in certain market areas or increases in the respective collective bargaining agreements of our clients, to which we assent. A substantial number of our employees are hourly employees whose wage rates are affected by increases in the federal or state minimum wage rate. We are subject to the Fair Labor Standards Act, which governs such matters as minimum wages, overtime and other working conditions. As collective bargaining agreements are renegotiated or minimum wage rates increase, which will occur in at least twenty states in 2015, we may need to increase the wages paid to employees. This may be applicable to not only minimum wage employees but also to employees at wage rates which are currently above the minimum wage. Although we have contractual rights to pass such wage increases through to our clients, our delay in, or inability to pass such wage increases through to our clients could have a material adverse effect on financial condition, results of operations and cash flows.

Any perceived or real health risks related to the food industry could adversely affect our Dietary segment.

We are subject to risks affecting the food industry generally, including food spoilage and food contamination. Our products are susceptible to contamination by disease-producing organisms, or pathogens, such as listeria monocytogenes, salmonella, campylobacter, hepatitis A, trichinosis and generic E. coli. Because these pathogens are generally found in the environment, there is a risk that these pathogens could be introduced to our products as a result of improper handling at the manufacturing, processing or food service level. Our suppliers' manufacturing facilities and products are subject to extensive laws and regulations relating to health, food preparation, sanitation and safety standards. Difficulties or failures by these companies in obtaining any required licenses or approvals or otherwise complying with such laws and regulations could adversely affect our revenue that is generated from these companies. Furthermore, there can be no assurance that compliance with governmental regulations by our suppliers will eliminate the risks related to food safety.

Additionally, the Company may be subject to liability if the consumption of our food products causes injury, illness or death. Even if a product liability claim is unsuccessful or is not fully pursued, the negative publicity surrounding any assertion that the Company's products caused injury or illness could adversely affect the Company's reputation.

Events reported in the media, such as incidents involving food-borne illnesses or food tampering, whether or not accurate, can cause damage to the reputation of our dietary segment. In addition, to the extent there is an outbreak of food related illness in any of our client facilities, it could materially harm our business, results of operations and financial condition.

Our investments may be subject to fluctuating and even negative returns depending upon interest rate movements and financial market conditions.

Although management believes we have a prudent investment policy, we are exposed to fluctuations in interest rates and in the market values of our investment portfolio which could adversely impact our financial condition and results of operations. Our marketable securities are primarily invested in municipal bonds. We believe that our investment criteria which includes reducing our exposure to individual states, requiring certain credit ratings and limiting our investments' duration period, reduces our exposure related to the financial duress and budget shortfalls that many state and local governments currently face.

Market expectations are high and rely greatly on execution of our growth strategy and related increases in financial performance.

Management believes the historical price increases of our Common Stock reflect high market expectations for our future operating results. In particular, our ability to attract new clients, through organic growth or acquisitions, has enabled us to execute our growth strategy and increase market share. Our business strategy focuses on growth and improving profitability through obtaining service agreements with new clients, providing new services to existing clients, obtaining modest price increases on service agreements with clients and maintaining internal cost reduction strategies at our various operational levels. In respect to providing new services to new or existing clients, our strategy is to achieve corresponding profit margins in each of our segments. If, in the event we are not able to continue either historical client revenue and profitability growth rates or projected improvement in such factors, our operating performance may be adversely affected and the high expectations for our market performance may not be met. Any failure to meet the market's high expectations for our revenue and operating results may have an adverse effect on the market price of our Common Stock.

Failure to maintain effective internal control over financial reporting could have a material adverse effect on our ability to report our financial results on a timely and accurate basis.

We are required to maintain internal control over financial reporting pursuant to Rule 13a-15 under the Exchange Act. Failure to maintain such controls could result in misstatements in our financial statements and potentially subject us to sanctions or investigations by the SEC or other regulatory authorities or could cause us to delay the filing of required reports with the SEC and our reporting of financial results. Any of these events could result in a decline in the price of shares of our common stock. Although we have taken steps to maintain our internal control structure as required, we cannot assure you that control deficiencies will not result in a misstatement in the future.

Recent government regulations may impact our ability to distribute dividends or the amount of such dividends to shareholders. Any decrease in or suspension of our dividend could cause our stock price to decline.

We expect to continue to pay a regular quarterly cash dividend. However, our dividend policy and the payment of future cash dividends under the policy are subject to the final determination each quarter by our Board of Directors that (i) the dividend will be made in compliance with laws applicable to the declaration and payment of cash dividends, including Section 1551(b) of the Pennsylvania Business Corporation Law, and (ii) the policy remains in our best interests, which determination will be based on a number of factors, including the impact of changing laws and regulations, economic conditions, our results of operations and/or financial condition, capital resources, the ability to satisfy financial covenants and other factors considered relevant by the Board of Directors. While we have continually increased the amount of our dividends, given these considerations, there can be no assurance these increases will continue and our Board of Directors may increase or decrease the amount of the dividend at any time and may also decide to suspend or discontinue the payment of cash dividends in the future. Any decrease in the amount of the dividend, or suspension or discontinuance of payment of a dividend, could cause our stock price to decline.

We may be unable to successfully integrate the operations of Platinum Health Services, LLC and Platinum Health Services PEO, LLC with our operations.

We acquired the assets of Platinum Health Services, LLC and Platinum Health Services PEO, LLC (collectively "Platinum") on July 12, 2013. We have devoted significant management attention and resources to integrating the operations and business practices of Platinum with our existing operating and business practices. Potential difficulties we have encountered or may encounter as part of the integration process include the following:

- the ability to retain a substantial number of Platinum's existing clients;
- the unanticipated or excessive diversion of management's resources;
- the integration of new operations and personnel and the disruption of, or the loss of momentum in, ongoing operations;
- the failure to achieve expected financial results;
- the inability to implement effective internal controls, procedures and policies for Platinum as required by the Sarbanes-Oxley Act of 2002 within the time periods prescribed thereby;
- the inability to successfully integrate Platinum in a manner that permits us to achieve the full revenue and other benefits anticipated to result from our acquisition of its assets; and
- the potential unknown liabilities and unforeseen incurred expenses or delays associated with the acquisition.

These and other risks could affect our ability to achieve the anticipated benefits of our acquisition of Platinum. In addition, these and other risks related to our acquisition of Platinum could adversely affect our ability to maintain relationships with customers and employees and have a material adverse effect on our business, financial condition and results of operations. If we were unable to successfully address any of these risks, our overall business could be harmed.

Our reorganization initiatives may not achieve the expected costs reductions.

In fiscal year 2015, the Company expects to transition its workers' compensation and certain employee health & welfare insurance programs to HCSG Insurance Corp. ("HCSG Insurance" or the "Captive"), its wholly owned captive insurance subsidiary. HCSG Insurance currently provides general liability coverage to the Company. HCSG Insurance was formed in January 2014 to provide the Company with greater flexibility and cost efficiency in meeting its property & casualty and health & welfare needs. As part of this process, the Company recorded a non-cash adjustment of \$37,416,000 to reflect estimated current and future insurance claims projected to be closed out over the next 15 to 17 years. Failure to achieve the expected costs reductions related to these reorganization initiatives could have a material adverse effect on our business and results of operations.

Item 1B. Unresolved Staff Comments.

None.

Item 2. Properties.

We lease our corporate offices, located at 3220 Tillman Drive, Suite 300, Bensalem, Pennsylvania 19020. We also lease office space at other locations in Pennsylvania, Colorado, South Carolina, Connecticut, Georgia, Illinois, California and New Jersey. These locations serve as divisional or regional offices providing management and administrative services to both of our operating segments in their respective geographical areas.

We are also provided with office and storage space at each of our client facilities.

Management does not foresee any difficulties with regard to the continued utilization of all of the aforementioned premises. We also believe that such properties are sufficient for our current operations.

We presently own laundry equipment, office furniture and equipment, housekeeping equipment and vehicles. Such office furniture and equipment, and vehicles are primarily located at our corporate office, warehouse, and divisional and regional offices. We have housekeeping equipment at all client facilities where we provide services under a full service housekeeping agreement. Generally, the aggregate cost of housekeeping equipment located at each client facility is less than \$2,500. Additionally, we have laundry installations at approximately 100 client facilities. Our cost of such laundry installations ranges between \$5,000 and \$100,000. We believe that such laundry equipment, office furniture and equipment, housekeeping equipment and vehicles are sufficient for our current operations.

Item 3. Legal Proceedings.

In the normal course of business, the Company is involved in various administrative and legal proceedings, including labor and employment, contracts, personal injury, and insurance matters. The Company believes it is not a party to, nor are any of its properties the subject of, any pending legal proceeding or governmental examination that would have a material adverse effect on the Company's consolidated financial condition or liquidity. However, in light of the uncertainties involved in such proceedings, the ultimate outcome of a particular matter could become material to the Company's results of operations for a particular period depending on, among other factors, the size of the loss or liability imposed and the level of the Company's operating income for that period.

Item 4. Mine Safety Disclosures.

Not applicable.

PART II

Item 5. Market for Registrant’s Common Equity, Related Stockholder Matters and Issuer Purchases of Equity Securities.

Market Information

Our common stock, \$.01 par value (the “Common Stock”), is traded under the symbol “HCSG” on the NASDAQ Global Select Market. As of February 17, 2015, there were approximately 71,261,000 shares of our Common Stock outstanding.

The high and low sales price quotations for our Common Stock during the years ended December 31, 2014 and 2013 ranged as follows:

Quarter Ended	2014	
	High	Low
March 31, 2014	\$ 29.14	\$ 24.40
June 30, 2014	\$ 30.58	\$ 28.12
September 30, 2014	\$ 30.69	\$ 25.51
December 31, 2014	\$ 31.96	\$ 26.54

Quarter Ended	2013	
	High	Low
March 31, 2013	\$ 25.84	\$ 22.40
June 30, 2013	\$ 25.95	\$ 21.60
September 30, 2013	\$ 26.54	\$ 23.61
December 31, 2013	\$ 29.53	\$ 24.80

Holdings

We have been advised by our transfer agent, American Stock Transfer and Trust Company, that we had approximately 600 holders of record of our Common Stock as of February 17, 2015. Based on reports of security position listings compiled for the 2014 annual meeting of shareholders, we believe we may have approximately 7,000 beneficial owners of our Common Stock.

Dividends

We have paid regular quarterly cash dividends since the second quarter of 2003. During 2014, we paid regular quarterly cash dividends totaling \$49,077,000 as detailed below:

	Quarter Ended			
	March 31, 2014	June 30, 2014	September 30, 2014	December 31, 2014
Cash dividend per common share	\$ 0.17125	\$ 0.17250	\$ 0.17375	\$ 0.17500
Total cash dividends paid	\$ 12,077,000	\$ 12,186,000	\$ 12,335,000	\$ 12,479,000
Record date	February 21, 2014	May 23, 2014	August 22, 2014	November 21, 2014
Payment date	March 28, 2014	June 27, 2014	September 26, 2014	December 26, 2014

Additionally, on January 27, 2015, our Board of Directors declared a regular quarterly cash dividend of \$0.17625 per common share, which will be paid on March 27, 2015 to shareholders of record as of the close of business on February 20, 2015.

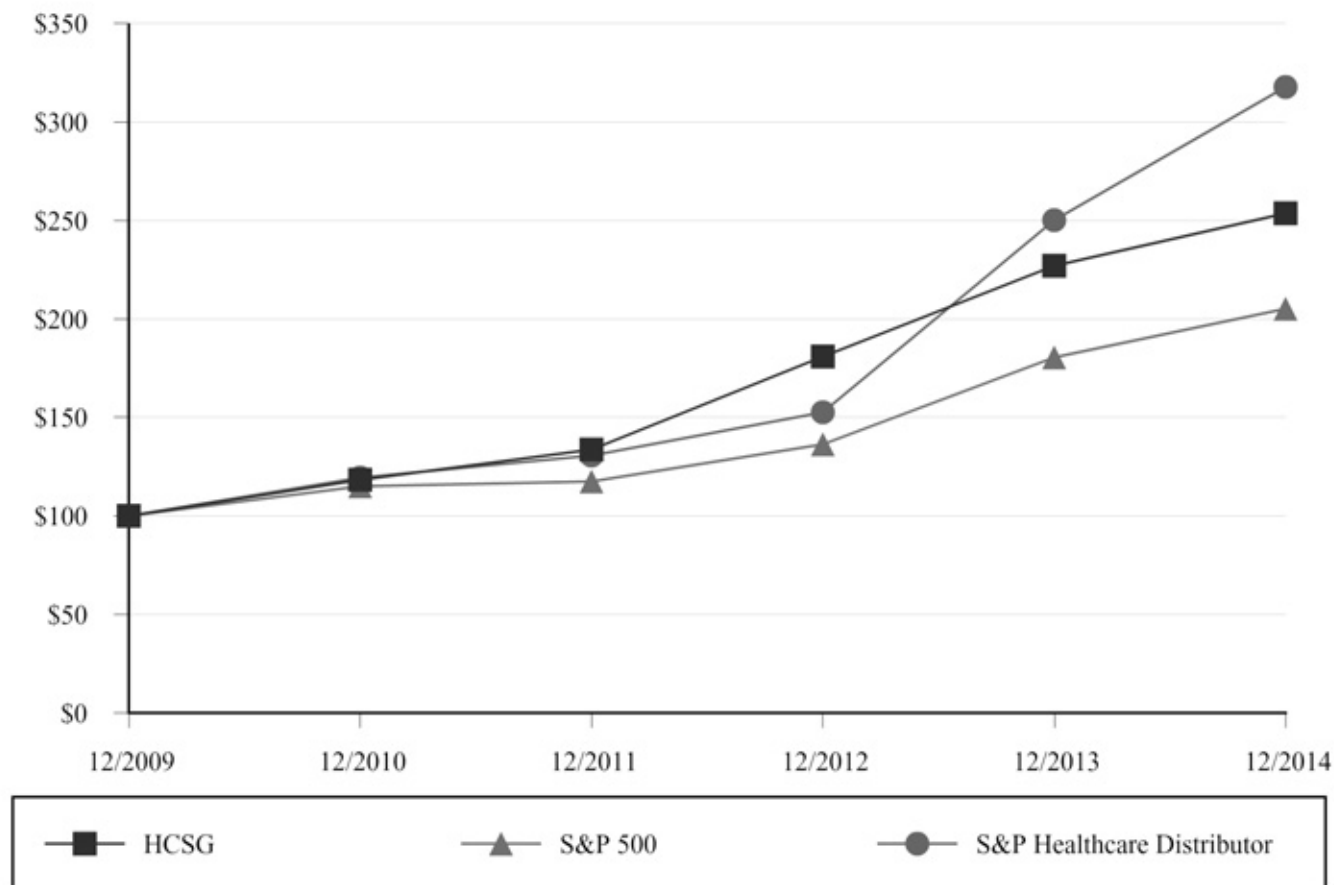
Our Board of Directors reviews our dividend policy on a quarterly basis. Although there can be no assurance that we will continue to pay dividends or the amount of the dividend, we expect to continue to pay a regular quarterly cash dividend. In connection with the establishment of our dividend policy, we adopted a Dividend Reinvestment Plan in 2003.

Performance Graph

The graph below matches Healthcare Services Group, Inc.'s ("HCSG") cumulative 5-year total shareholder return on common stock with the cumulative total returns of the S&P 500 index and the S&P Health Care Distributors index. The graph tracks the performance of a \$100 investment in our common stock and in each of the indexes (with the reinvestment of all dividends) from December 31, 2009 to December 31, 2014.

Comparison of 5 Year Cumulative Total Return*

Among Healthcare Services Group, Inc., the S&P 500 Index,
and the S&P Health Care Distributors Index



*\$100 invested on December 31, 2009 in stock or index, including reinvestment of dividends.
Fiscal year ending December 31.

Copyright© 2015 S&P, a division of The McGraw-Hill Companies Inc. All rights reserved.

Company/Index	December 31,					
	2009	2010	2011	2012	2013	2014
Healthcare Services Group, Inc. ("HCSG")	\$ 100.00	\$ 118.35	\$ 133.62	\$ 180.83	\$ 226.98	\$ 253.57
S&P 500	\$ 100.00	\$ 115.06	\$ 117.49	\$ 136.30	\$ 180.44	\$ 205.14
S&P Health Care Distributors	\$ 100.00	\$ 119.43	\$ 130.63	\$ 152.53	\$ 250.11	\$ 317.69

The stock price performance included in this graph is not necessarily indicative of future stock price performance.

Item 6. Selected Financial Data.

The following selected condensed consolidated financial data has been derived from, and should be read in conjunction with “Management’s Discussion and Analysis of Financial Condition and Results of Operations” and our Consolidated Financial Statements and Notes thereto, included elsewhere in this report on Form 10-K and incorporated herein by reference.

	Years Ended December 31,				
	2014	2013	2012	2011	2010
	<i>(in thousands, except per share amounts)</i>				
Selected Operating Results					
Revenues	\$ 1,293,183	\$ 1,149,890	\$ 1,077,435	\$ 889,065	\$ 773,956
Net income	\$ 21,850	\$ 47,129	\$ 44,214	\$ 38,156	\$ 34,441
Basic earnings per common share	\$ 0.31	\$ 0.68	\$ 0.65	\$ 0.57	\$ 0.52
Diluted earnings per common share	\$ 0.31	\$ 0.67	\$ 0.65	\$ 0.56	\$ 0.51
Selected Balance Sheet Data					
Total assets	\$ 469,579	\$ 425,342	\$ 331,183	\$ 289,695	\$ 277,934
Stockholders' equity	\$ 275,830	\$ 285,143	\$ 229,570	\$ 217,726	\$ 213,079
Selected Other Financial Data					
Working capital	\$ 216,869	\$ 210,089	\$ 200,182	\$ 186,734	\$ 181,244
Cash dividends per common share	\$ 0.69	\$ 0.67	\$ 0.65	\$ 0.63	\$ 0.60
Weighted average number of common shares outstanding - basic EPS	70,616	69,206	67,511	66,637	65,917
Weighted average number of common shares outstanding - diluted EPS	71,341	70,045	68,485	67,585	67,008

Item 7. Management’s Discussion and Analysis of Financial Condition and Results of Operation.

You should read the following discussion and analysis of our financial condition and results of our operations in conjunction with our consolidated financial statements and the related notes to those statements included elsewhere in this report. This discussion contains forward-looking statements reflecting our current expectations that involve risks and uncertainties. Our actual results and the timing of events may differ materially from those contained in these forward-looking statements due to a number of factors, including those discussed in the section entitled "Risk Factors," and elsewhere in this report on Form 10-K. We are on a calendar year end, and except where otherwise indicated below, "2014" refers to the year ended December 31, 2014, "2013" refers to the year ended December 31, 2013 and "2012" refers to the year ended December 31, 2012.

Results of Operations

The following discussion is intended to provide the reader with information that will be helpful in understanding our financial statements including the changes in certain key items in comparing financial statements period to period. We also intend to provide the primary factors that accounted for those changes, as well as a summary of how certain accounting principles affect our financial statements. In addition, we are providing information about the financial results of our two operating segments to further assist in understanding how these segments and their results affect our consolidated results of operations. This discussion should be read in conjunction with our financial statements as of December 31, 2014 and the year then ended and the notes accompanying those financial statements contained herein under Item 8.

Overview

We provide management, administrative and operating expertise and services to the housekeeping, laundry, linen, facility maintenance and dietary service departments of the health care industry, including nursing homes, retirement complexes, rehabilitation centers and hospitals located throughout the United States. We believe that we are the largest provider of housekeeping and laundry management services to the long-term care industry in the United States, rendering such services to over 3,500 facilities in 48 states as of December 31, 2014. Although we do not directly participate in any government reimbursement programs, our clients’ reimbursements are subject to government regulation. Therefore, our clients are directly affected by any legislation relating to Medicare and Medicaid reimbursement programs.

We provide our services primarily pursuant to full service agreements with our clients. In such agreements, we are responsible for the day to day management of the department managers and hourly employees located at our clients' facilities. We also provide services on the basis of a management-only agreement for a very limited number of clients. Our agreements with clients typically provide for renewable one year service terms, cancelable by either party upon 30 to 90 days' notice after the initial 90-day period.

We are organized into two reportable segments; housekeeping, laundry, linen and other services ("Housekeeping"), and dietary department services ("Dietary"). At December 31, 2014, Housekeeping is provided at essentially all of our 3,500 client facilities, generating approximately 65% or \$846,610,000 of 2014 total revenues. Dietary is provided to over 900 client facilities at December 31, 2014 and contributed approximately 35% or \$446,573,000 of 2014 total revenues.

Housekeeping consists of managing the client's housekeeping department which is principally responsible for the cleaning, disinfecting and sanitizing of patient rooms and common areas of a client's facility, as well as laundering and processing of the personal clothing belonging to the facility's patients. Also within the scope of this segment's service is the responsibility for laundering and processing the bed linens, uniforms and other assorted linen items utilized by a client facility.

Dietary consists of managing the client's dietary department which is principally responsible for food purchasing, meal preparation and providing dietitian consulting professional services, which includes the development of a menu that meets the patient's dietary needs.

Our ability to acquire new clients and increase revenues is affected by many factors. Competitive factors consist primarily of competing with the potential client utilizing an in-house support staff, as well as local companies which provide services similar to ours. We are unaware of any other companies, on a national or local level, which have a significant presence or impact on our procurement of new clients in our market. We believe the primary revenue drivers of our business are our ability to obtain new clients and to pass through, by means of service billing increases, increases in our cost of providing the services. In addition to the recoupment of costs increases, we endeavor to obtain modest annual revenue increases from our existing clients to preserve current profit margins at the facility level. The primary economic factor in acquiring new clients is our ability to demonstrate the cost-effectiveness of our services. This is because many of our clients' revenues are generally highly reliant on Medicare and Medicaid reimbursement funding rates and mechanisms. Therefore, their economic decision-making process in engaging us is driven significantly by their reimbursement funding rate structure in relation to how their costs are currently being reimbursed and the financial impact on their reimbursement as a result of engaging us for the respective services. Another factor is our ability to demonstrate to potential clients the benefit of being relieved of the administrative and operational challenges related to the day-to-day management of their respective department services for which they contract with us. In addition, we must be able to assure new clients that we will be able to improve the quality of service which they are providing to their patients and residents. We believe the factors discussed above are equally applicable to each of our segments with respect to acquiring new clients and increasing revenues.

Our costs of services can experience volatility and impact our operating performance in two key cost indicators: costs of labor and costs of supplies. The volatility of these costs impacts each segment somewhat differently due to the respective costs as a percentage of that segment's revenues. Housekeeping is more significantly impacted than Dietary as a consequence of our management of our costs of labor. Labor costs accounted for approximately 81% of Housekeeping revenues. Dietary labor costs accounted for approximately 51% of Dietary revenues. Changes in wage rates as a result of legislative or collective bargaining actions, anticipated staffing levels, and other unforeseen variations in our use of labor at a client service location or in management labor costs will result in volatility of these costs. In contrast, supplies consumed in performing our services is more significant for Dietary, accounted for approximately 41% of Dietary revenues, of total operating costs incurred at a Dietary facility service location. Housekeeping supplies, including linen products, accounted for approximately 8% of Housekeeping revenues. Generally, the volatility of these expenses is influenced by factors outside of our control and is unpredictable. This is because Housekeeping and Dietary supplies are principally commodity products and affected by market conditions specific to the respective products. Although we endeavor to pass on such increases in labor and supplies costs to our clients, the inability or delay in procuring service billing increases to reflect these additional costs would negatively impact our profit margins.

State Medicaid programs are experiencing increased demand, and with lower revenues than projected, they have fewer resources to support their Medicaid programs. In addition, comprehensive health care legislation under the Patient Protection and Affordable Care Act and the Health Care and Education Reconciliation Act of 2010 (together, the "Act") was signed into law in March 2010. The Act will significantly impact the governmental healthcare programs in which our clients participate, and reimbursements received thereunder from governmental or third-party payors. In July 2011, Centers for Medicare and Medicaid Services ("CMS") issued a final rule that reduced Medicare payments to nursing centers by 11.1% and changed the reimbursement for the provision of group rehabilitation therapy services to Medicare beneficiaries. This new rule was effective as of October 1, 2011. Furthermore, in the coming year and beyond, new proposals or additional changes in existing regulations could be made to the Act which could directly impact the governmental reimbursement programs in which our clients participate. As a result, some state Medicaid

programs are reconsidering previously approved increases in nursing home reimbursement or are considering delaying or foregoing those increases. A few states have indicated it is possible they will run out of cash to pay Medicaid providers, including nursing homes. Any negative changes in our clients' reimbursements may negatively impact our results of operations. Although we are currently evaluating the Act's effect on our client base, we may not know the full effect until such time as these laws are fully implemented and CMS and other agencies issue applicable regulations or guidance. Additionally, even if federal or state legislation is enacted that provides additional funding to Medicaid providers, given the volatility of the economic environment, it is difficult to predict the impact of this legislation on our clients' liquidity and their ability to make payments to us as agreed.

In January 2013, the U.S. Congress enacted the American Taxpayer Relief Act of 2012, which delayed automatic spending cuts of \$1.2 trillion, including reduced Medicare payments to plans and providers up to 2%. These discretionary spending caps were originally enacted under provisions in the Budget Control Act of 2011, an initiative to reduce the federal deficit through the year 2021, also known as "sequestration." The sequestration went into effect starting March 2013. In December 2013, the U.S. Congress enacted the Bipartisan Budget Act of 2013, which reduces the impact of the sequestration over the next two years. This began in fiscal year 2014 and extended the reduction in Medicare payments to plans and providers for two years through the year 2023.

On July 12, 2013, the Company acquired substantially all of the operating assets of Platinum Health Services, LLC, a Delaware limited liability company and Platinum Health Services PEO, LLC, a Delaware limited liability company (collectively "Platinum"). Platinum was a privately-held provider of professional housekeeping, laundry and maintenance services to long-term and post-acute care facilities and operated solely within the United States. The acquisition has been included within the consolidated results of operations and financial condition from the date of the acquisition.

In fiscal year 2015, the Company expects to transition its workers compensation and certain employee health & welfare insurance programs to HCSG Insurance Corp. ("HCSG Insurance" or the "Captive"), its wholly owned captive insurance subsidiary. HCSG Insurance currently provides general liability coverage to the Company. HCSG Insurance was formed in January 2014 to provide the Company with greater flexibility and cost efficiency in meeting its property & casualty and health & welfare needs. In conjunction with the aforementioned insurance programs being administered and provided by the Captive, during the third quarter 2014, management conducted a review of its self-insurance reserves to enhance its self-insurance estimation process. After analysis and consultation with insurance regulators and advisors, the Company recorded a one-time, non-cash adjustment of \$37,416,000 to reflect estimated current and future insurance claims projected to be closed out over the next 15 to 17 years. This tax-effected adjustment of approximately \$0.33 per diluted share, was recorded during the third quarter 2014 and is accounted for as a change in estimate, along with charges related to the corporate reorganization, self-funded health insurance program transition and other related expenses, is recorded in our consolidated statements of comprehensive income.

Consolidated Operations

The following table sets forth, for the years indicated, the percentage which certain items bear to consolidated revenues:

	Relation to Consolidated Revenues Years Ended December 31,		
	2014	2013	2012
Revenues	100.0%	100.0%	100.0%
Operating costs and expenses:			
Costs of services provided	89.3%	86.5%	86.4%
Selling, general and administrative	8.3%	8.0%	7.4%
Investment and interest income	0.1%	0.3%	0.3%
Income before income taxes	2.5%	5.8%	6.5%
Income taxes	0.8%	1.7%	2.4%
Net income	1.7%	4.1%	4.1%

Subject to the factors noted in the Cautionary Statement Regarding Forward Looking Statements included in this report, we anticipate, although there can be no assurance thereof, our financial performance in 2015 may be comparable to historical ranges, absent non-recurring charges, as they relate to consolidated revenues. 2014 percentages were negatively impacted by a one-time, non-cash adjustment related to a change in estimate related to a change in self-insurance reserve methodology.

Housekeeping is our largest and core reportable segment, representing approximately 65% of 2014 consolidated revenues. Dietary revenues represented approximately 35% of 2014 consolidated revenues.

Although there can be no assurance thereof, we believe that in 2015 Dietary's revenues, as a percentage of consolidated revenues, will increase from its respective 2014 percentages noted above. Furthermore, we expect the sources of growth in 2015 for the respective operating segments will be primarily the same as historically experienced. Accordingly, although there can be no assurance thereof, the growth in Dietary is expected to come from our current Housekeeping client base, while growth in Housekeeping will primarily come from obtaining new clients.

Years Ended December 31, 2014 and 2013

The following table sets forth 2014 income statement key components that we use to evaluate our financial performance on a consolidated and reportable segment basis compared to 2013 amounts. The differences between the reportable segments' operating results and other disclosed data and our consolidated financial statements relate primarily to corporate level transactions and recording of transactions at the reportable segment level.

	Reportable Segments — For the Year Ended December 31, 2014						
	Consolidated	% Change	Corporate and Eliminations	Housekeeping		Dietary	
				Amount	% Change	Amount	% Change
Revenues	\$ 1,293,183,000	12.5 %	\$ —	\$ 846,610,000	11.5%	\$ 446,573,000	14.3%
Cost of services provided	1,155,293,000	16.1	(41,157,000)	776,220,000	12.5	420,230,000	13.7
Selling, general and administrative	107,810,000	17.2	107,810,000	—	—	—	—
Investment and interest income	1,628,000	(56.0)	1,628,000	—	—	—	—
Income before income taxes	\$ 31,708,000	(52.3)%	\$ (65,025,000)	\$ 70,390,000	2.2%	\$ 26,343,000	24.0%

	Reportable Segments — For the Year Ended December 31, 2013			
	Consolidated	Corporate & Eliminations	Housekeeping	Dietary
Revenues	\$ 1,149,890,000	\$ —	\$ 759,093,000	\$ 390,797,000
Cost of services provided	995,104,000	(64,670,000)	690,221,000	369,553,000
Selling, general and administrative	91,998,000	91,998,000	—	—
Investment and interest income	3,701,000	3,701,000	—	—
Income before income taxes	\$ 66,489,000	\$ (23,627,000)	\$ 68,872,000	\$ 21,244,000

Revenues

Consolidated

Consolidated revenues increased 12.5% to \$1,293,183,000 in 2014 compared to \$1,149,890,000 in 2013 as a result of the factors discussed below under Reportable Segments.

Reportable Segments

Housekeeping's 11.5% net growth in reportable segment revenues resulted primarily from an increase in revenues attributable to service agreements entered into with new clients.

Dietary's 14.3% net growth in reportable segment revenues is primarily a result of providing this service to a greater number of facilities for existing Housekeeping clients.

Costs of services provided

Consolidated

Consolidated costs of services increased 16.1% to \$1,155,293,000 in 2014 compared to \$995,104,000 in 2013. The increase in costs of services is a result of growth in our consolidated revenues and the one-time, non-cash change in estimate related to our self-insurance liability. Certain significant components within our costs of services are subject to fluctuation with the changes in our business and client base. The increase in such components during 2014 compared to 2013 include labor and other labor related costs, housekeeping and dietary supplies, bad debt provision, and workers' compensation and general liability insurance. Historically, these significant components have accounted for approximately 98% of consolidated costs of services.

As a percentage of consolidated revenues, cost of services increased to 89.3% in 2014 from 86.5% in 2013. The following table provides a comparison of the primary cost of services provided-key indicators that we manage on a consolidated basis in evaluating our financial performance.

Cost of Services Provided-Key Indicators as % of Consolidated Revenue	2014 %	2013 %	% Change
Bad debt provision	0.3	0.2	0.1
Workers' compensation and general liability insurance	5.5	3.2	2.3

The bad debt provision increased primarily due to our assessment of the collectability of our receivables. When we evaluate that there is an uncertainty associated with the collectability of amounts due from a client, we record a bad debt provision based upon our initial estimate of ultimate collectability. We revise such provision as additional information is available which we believe enables us to make a more accurate estimate of the collectability of an account. Some of our clients may experience liquidity problems because of governmental funding or operational issues. Such liquidity problems may cause them to not pay us as agreed upon or necessitate them filing for bankruptcy protection. In the event of additional clients filing for bankruptcy protection, we would increase our bad debt provision during the reporting period when such filing occurs. Therefore, if more clients file for bankruptcy protection or if we have to increase our current provision related to existing bankruptcies, our bad debt provision may increase from our last two years' average as a percentage of consolidated revenues.

The workers' compensation and general liability insurance expense increased due to a change in estimate which resulted in a one-time, non-cash charge to reflect certain costs related to the estimated current and future insurance claims projected to be paid out over the next 15 to 17 years.

Reportable Segments

Cost of services provided for Housekeeping, as a percentage of Housekeeping revenues for 2014, increased to 91.7% compared to 90.9% in 2013. Cost of services provided for Dietary, as a percentage of Dietary revenues for 2014, decreased to 94.1% compared to 94.6% in 2013.

The following table provides a comparison of the primary cost of services provided-key indicators, as a percentage of the respective segment's revenues that we manage on a reportable segment basis in evaluating our financial performance:

Cost of Services Provided-Key Indicators as % of Segment Revenue	2014 %	2013 %	% Change
Housekeeping labor and other labor costs	81.0	80.4	0.6
Housekeeping supplies	8.2	8.0	0.2
Dietary labor and other labor costs	51.0	51.8	(0.8)
Dietary supplies	40.7	39.9	0.8

Housekeeping labor and other labor costs, as a percentage of Housekeeping revenues, increased due to inefficiencies recognized in managing labor at the facility level. The increase in Housekeeping supplies, as a percentage of Housekeeping revenues, resulted primarily from an increase in supplies due to the growth in housekeeping, laundry and linen revenue compared to overall Housekeeping revenues. Additionally, we have added more clients where we provide a greater amount of supplies under the terms of our service agreements compared to what we have historically provided to our client base.

Dietary labor and other labor costs, as a percentage of Dietary revenues, decreased due to increased efficiencies in managing these costs at the facility level. The increase in Dietary supplies, as a percentage of Dietary revenues, is a result of the inefficient management of these costs, partially offset by more favorable vendor pricing programs obtained through further consolidation of dietary supply vendors.

Consolidated Selling, General and Administrative Expense

	Year Ended December 31,		
	2014	2013	% Change
Selling, general and administrative expense w/o deferred compensation change (a)	\$ 106,599,000	\$ 88,993,000	19.8 %
Deferred compensation fund gain	1,211,000	3,005,000	(59.7)%
Consolidated selling, general and administrative expense (b)	<u>\$ 107,810,000</u>	<u>\$ 91,998,000</u>	<u>17.2 %</u>

(a) Selling, general and administrative expense excluding the change in the market value of the deferred compensation fund.

(b) Consolidated selling, general and administrative expense reported for the period presented.

Although our growth in consolidated revenues was 12.5% for the year ended December 31, 2014, selling, general and administrative expenses excluding the change in market value of the deferred compensation fund increased 19.8% or \$17,606,000 compared to the 2013 period. Consequently, for the year ended December 31, 2014, selling, general and administrative expenses (excluding the impact of deferred compensation fund), as a percentage of consolidated revenues, increased to 8.2% of consolidated revenues as compared to 7.7% in the 2013 comparable period. This percentage increase resulted primarily from the increase in our payroll and payroll related expenses in advance of the new business, professional fees, legal matters and charges related to the corporate reorganization under our wholly owned captive insurance subsidiary and other related expenses. In 2015, we expect to incur selling, general and administrative expenses as a percentage of consolidated revenues consistent with historical levels.

For the year ended December 31, 2014, the portion of our consolidated selling, general and administrative expense attributable to deferred compensation decreased \$1,794,000 compared to the 2013 period. The decrease in deferred compensation is a result of unfavorable market value fluctuations on the balance of investments held in our deferred compensation fund as noted below in Consolidated Investment and Interest Income. Consolidated selling, general and administrative expenses increased \$15,812,000 or 17.2%.

Consolidated Investment and Interest Income

Investment and interest income, as a percentage of consolidated revenues, decreased to 0.1% for the year ended December 31, 2014 compared to 0.3% for the corresponding 2013 period. We recognized a decrease in the market value of the investments held in our deferred compensation fund compared to an increase in the market value in the prior year.

Income before Income Taxes

Consolidated

As a result of the discussion above related to revenues and expenses, consolidated income before income taxes for 2014 decreased to 2.5%, as a percentage of consolidated revenues, compared to 5.8% in 2013.

Reportable Segments

Housekeeping's increase in income before income taxes is primarily attributable to the key indicators discussed above, specifically the increase in reportable segment revenues, partially offset by the increase in labor and labor related costs and housekeeping supplies as a percentage of segment revenue.

Dietary's increase in income before income taxes is primarily attributable to the key indicators discussed above, specifically the increase in reportable segment revenues, as well as the decrease in labor and labor related costs as a percentage of segment revenue, partially offset by the increased cost of dietary supplies.

Consolidated Income Taxes

Our effective tax rate was 31.1% for the year ended December 31, 2014 and 29.1% for 2013. Such differences between the effective tax rates and the applicable U.S. federal statutory rate arise primarily from the effect of state and local taxes and tax credits available to the Company. The increase in the effective tax rate is primarily due to the impact of tax credits in 2013 for 2012 and 2013 as compared to the current year. The Company receives credits related to the Work Opportunity Tax Credit ("WOTC") program but this program expired at December 31, 2011. The WOTC was subsequently renewed, but not until January 2, 2013, as part of The American Taxpayer Relief Act of 2012. The tax effect of a change in tax law is recognized in the period in which the date of the enactment occurs. Since the WOTC was renewed in 2013, the total tax effect of additional expected credits for 2012 was included in this period. In addition, the WOTC expired again at December 31, 2013 and was not renewed again for the 2014 year until

December 2014 as part of the Tax Increase Prevention Act of 2014. The tax effect of this renewal was recorded in the fourth quarter of 2014.

Absent any other significant change in federal or state and local tax laws, we expect our effective tax rate for 2015 to be higher than the 2014 rate and more comparable to the 2012 rate. Since the WOTC program expired again as of December 31, 2014 and has not yet been renewed, the 2015 income tax provision will only include any tax credits realized in 2015 relating to prior year certifications, unless the WOTC program is extended in 2015. If the program is extended during 2015, the tax effect of expected 2015 credits will be included in the tax provision in the period of enactment, which should reduce our effective tax rate. Other than the effect of the WOTC, our effective tax rate differs from the federal income tax statutory rate principally because of the effect of state and local income taxes. The Company is currently analyzing the potential effects from the impending 2015 corporate reorganization but does not foresee a significant effect on the effective tax rate at this time.

Consolidated Net Income

As a result of the matters discussed above, consolidated net income as a percentage of revenue for 2014 decreased to 1.7% compared to 4.1% in the corresponding 2013 period.

Years Ended December 31, 2013 and 2012

The following table sets forth 2013 income statement key components that we use to evaluate our financial performance on a consolidated and reportable segment basis compared to 2012 amounts. The differences between the reportable segments' operating results and other disclosed data and our consolidated financial statements relate primarily to corporate level transactions and recording of transactions at the reportable segment level.

	Reportable Segments — For the Year Ended December 31, 2013						
	Consolidated	% Change	Corporate and Eliminations	Housekeeping		Dietary	
				Amount	% Change	Amount	% Change
Revenues	\$ 1,149,890,000	6.7 %	\$ —	\$ 759,093,000	2.9 %	\$ 390,797,000	15.0%
Cost of services provided	995,104,000	6.9	(64,670,000)	690,221,000	3.3	369,553,000	15.0
Selling, general and administrative	91,998,000	16.0	91,998,000	—	—	—	—
Investment and interest income	3,701,000	26.7	3,701,000	—	—	—	—
Income before income taxes	\$ 66,489,000	(5.4)%	\$ (23,627,000)	\$ 68,872,000	(0.8)%	\$ 21,244,000	15.0%

	Reportable Segments — For the Year Ended December 31, 2012			
	Consolidated	Corporate & Eliminations	Housekeeping	Dietary
Revenues	\$ 1,077,435,000	\$ 173,000	\$ 737,407,000	\$ 339,855,000
Cost of services provided	930,814,000	(58,545,000)	667,978,000	321,381,000
Selling, general and administrative	79,277,000	79,277,000	—	—
Investment and interest income	2,920,000	2,920,000	—	—
Income before income taxes	\$ 70,264,000	\$ (17,639,000)	\$ 69,429,000	\$ 18,474,000

Revenues

Consolidated

Consolidated revenues increased 6.7% to \$1,149,890,000 in 2013 compared to \$1,077,435,000 in 2012 as a result of the factors discussed below under Reportable Segments.

Reportable Segments

Housekeeping's 2.9% net growth in reportable segment revenues resulted primarily from an increase in revenues attributable to service agreements entered into with new clients and the acquisition of Platinum on July 12, 2013.

Dietary's 15.0% net growth in reportable segment revenues is primarily a result of providing this service to a greater number of facilities for existing Housekeeping clients.

Costs of services provided

Consolidated

Consolidated costs of services increased 6.9% to \$995,104,000 in 2013 compared to \$930,814,000 in 2012. The increase in costs of services is a direct result of growth in our consolidated revenues. Certain significant components within our costs of services are subject to fluctuation with the changes in our business and client base. The increase in such components during 2013 compared to 2012 include labor and other labor related costs, housekeeping and dietary supplies, and workers' compensation and general liability insurance, partially offset by a decrease in our bad debt provision. Historically, these significant components have accounted for approximately 97% of consolidated costs of services.

As a percentage of consolidated revenues, cost of services increased to 86.5% in 2013 from 86.4% in 2012. The following table provides a comparison of the primary cost of services provided-key indicators that we manage on a consolidated basis in evaluating our financial performance.

Cost of Services Provided-Key Indicators as % of Consolidated Revenue	2013 %	2012 %	% Change
Bad debt provision	0.2	0.2	—
Workers' compensation and general liability insurance	3.2	3.4	(0.2)

As a percentage of consolidated revenues, the bad debt provision remained constant due to our assessment of the collectability of our receivables. When we evaluate that there is an uncertainty associated with the collectability of amounts due from a client, we record a bad debt provision based upon our initial estimate of ultimate collectability. We revise such provision as additional information is available which we believe enables us to make a more accurate estimate of the collectability of an account. Some of our clients may experience liquidity problems because of governmental funding or operational issues. Such liquidity problems may cause them to not pay us as agreed upon or necessitate them filing for bankruptcy protection. In the event of additional clients filing for bankruptcy protection, we would increase our bad debt provision during the reporting period when such filing occurs. Therefore, if more clients file for bankruptcy protection or if we have to increase our current provision related to existing bankruptcies, our bad debt provision may increase from our last two years' average as a percentage of consolidated revenues.

As a percentage of consolidated revenues, the workers' compensation and general liability insurance expense decreased primarily due to more favorable claims' experience during the year ended December 31, 2013 compared to 2012.

Reportable Segments

Cost of services provided for Housekeeping, as a percentage of Housekeeping revenues for 2013, increased slightly to 90.9% compared to 90.6% in 2012. Cost of services provided for Dietary, as a percentage of Dietary revenues for 2013, remained constant at 94.6% compared to 2012.

The following table provides a comparison of the primary cost of services provided-key indicators, as a percentage of the respective segment's revenues that we manage on a reportable segment basis in evaluating our financial performance:

Cost of Services Provided-Key Indicators as % of Segment Revenue	2013 %	2012 %	% Change
Housekeeping labor and other labor costs	80.4	80.3	0.1
Housekeeping supplies	8.0	7.8	0.2
Dietary labor and other labor costs	51.8	52.3	(0.5)
Dietary supplies	39.9	39.3	0.6

Housekeeping labor and other labor costs, as a percentage of Housekeeping revenues, slightly increased due to inefficiencies recognized in managing labor at the facility level. The increase in Housekeeping supplies, as a percentage of Housekeeping revenues, resulted primarily from an increase in supplies due to the growth in housekeeping, laundry and linen revenue compared to overall Housekeeping revenues. Additionally, we have added more clients where we provide a greater amount of supplies under the terms of our service agreements compared to what we have historically provided to our client base.

Dietary labor and other labor costs, as a percentage of Dietary revenues, decreased due to increased efficiencies in managing these costs at the facility level. The increase in Dietary supplies, as a percentage of Dietary revenues, is a result of the inefficient

management of these costs, partially offset by more favorable vendor pricing programs obtained through further consolidation of dietary supply vendors.

Consolidated Selling, General and Administrative Expense

	Year Ended December 31,		
	2013	2012	% Change
Selling, general and administrative expense w/o deferred compensation change (a)	\$ 88,993,000	\$ 77,559,000	14.7%
Deferred compensation fund gain	3,005,000	1,718,000	74.9%
Consolidated selling, general and administrative expense (b)	<u>\$ 91,998,000</u>	<u>\$ 79,277,000</u>	<u>16.0%</u>

(a) Selling, general and administrative expense excluding the change in the market value of the deferred compensation fund.

(b) Consolidated selling, general and administrative expense reported for the period presented.

Although our growth in consolidated revenues was 6.7% for the year ended December 31, 2013, selling, general and administrative expenses excluding the change in market value of the deferred compensation fund increased 14.7% or \$11,434,000 compared to the 2012 period. Consequently, for the year ended December 31, 2013, selling, general and administrative expenses (excluding the impact of deferred compensation fund), as a percentage of consolidated revenues, increased to 7.7% of consolidated revenues as compared to 7.2% in the 2012 comparable period. This percentage increase resulted primarily from the increase in our payroll and payroll related expenses, professional fees, and legal expenses and matters as a percentage of revenues. The increase in payroll and payroll related costs resulted from the development of additional regions, districts and overall management personnel in advance of the new business. The primary increase in our legal expenses were the related costs and expenses associated with mediated settlements regarding certain employment related matters. In 2014, we expect to incur selling, general and administrative expenses as a percentage of consolidated revenues consistent with historical levels.

For the year ended December 31, 2013, the portion of our consolidated selling, general and administrative expense attributable to deferred compensation increased \$1,287,000 compared to the 2012 period. The increase in the deferred compensation liability is a result of an increase in the market value of the investments held in our deferred compensation fund as noted below in Consolidated Investment and Interest Income. Consolidated selling, general and administrative expenses increased \$12,721,000 or 16.0%.

Consolidated Investment and Interest Income

Investment and interest income, as a percentage of consolidated revenues, remained constant at 0.3% for the year ended December 31, 2013 compared to the corresponding 2012 period.

Income before Income Taxes

Consolidated

As a result of the discussion above related to revenues and expenses, consolidated income before income taxes for 2013 decreased to 5.8%, as a percentage of consolidated revenues, compared to 6.5% in 2012.

Reportable Segments

Housekeeping's decrease in income before income taxes is primarily attributable to the key indicators discussed above, specifically the increase in labor and labor related costs and housekeeping supplies as a percentage of segment revenue, partially offset by an increase in reportable segment revenues.

Dietary's increase in income before income taxes is primarily attributable to the key indicators discussed above, specifically the increase in reportable segment revenues, as well as the decrease in labor and labor related costs as a percentage of segment revenue, partially offset by the increased cost of dietary supplies.

Consolidated Income Taxes

Our effective tax rate was 29.1% for the year ended December 31, 2013 and 37.1% for 2012. The decrease in the effective tax rate was primarily the result of increased tax credits realized in 2013. The Company receives credits related to the Work Opportunity Tax Credit ("WOTC") program but this program expired at December 31, 2011. The WOTC was subsequently renewed, but not until January 2, 2013, as part of The American Taxpayer Relief Act of 2012 (the "Relief Act"). The tax effect of a change in tax law is recognized in the period in which the date of the enactment occurs. Since the WOTC was renewed during the three month period ended March 31, 2013, the total tax effect of additional expected credits for 2012 was included in this period. The Relief Act, among other tax changes, extended the WOTC and other similar wage-related credits for another two years, retroactive to January 1, 2012.

Consolidated Net Income

As a result of the matters discussed above, consolidated net income as a percentage of revenue for 2013 remained constant at 4.1% compared to the corresponding 2012 period.

Critical Accounting Policies and Estimates

The preparation of financial statements in accordance with accounting standards generally accepted in the United States requires management to make estimates and assumptions that affect the reported amounts of assets and liabilities at the date of the financial statements and the reported amounts of revenues and expenses during the reporting period.

We consider the policies discussed below to be critical to an understanding of our financial statements because their application places the most significant demands on our judgment. Therefore, it should be noted that financial reporting results rely on estimating the effect of matters that are inherently uncertain. Specific risks for these critical accounting policies and estimates are described in the following paragraphs. For these estimates, we caution that future events rarely develop as forecasted, and the best estimates routinely require adjustment. Any such adjustments or revisions to estimates could result in material differences to previously reported amounts.

The policies discussed are not intended to be a comprehensive list of all of our accounting policies. In many cases, the accounting treatment of a particular transaction is specifically dictated by accounting standards generally accepted in the United States, with no need for our judgment in their application. There are also areas in which our judgment in selecting another available alternative would not produce a materially different result. See our audited consolidated financial statements and notes thereto which are included in this Annual Report on Form 10-K, which contain accounting policies and other disclosures required by accounting principles generally accepted in the United States.

Allowance for Doubtful Accounts

The allowance for doubtful accounts (the "Allowance") is established as losses are estimated to have occurred through a provision for bad debts charged to earnings. The Allowance is evaluated based on our periodic review of accounts and notes receivable and is inherently subjective as it requires estimates that are susceptible to significant revision as more information becomes available.

We have had varying collection experience with respect to our accounts and notes receivable. When contractual terms are not met, we generally encounter difficulty in collecting amounts due from certain of our clients. Therefore, we have sometimes been required to extend the period of payment for certain clients beyond contractual terms. These clients include those who have terminated service agreements and slow payers experiencing financial difficulties. In making credit evaluations, in addition to analyzing and anticipating, where possible, the specific cases described above, we consider the general collection risks associated with trends in the long-term care industry. We also establish credit limits, perform ongoing credit evaluations, and monitor accounts to minimize the risk of loss.

In accordance with the risk of extending credit, we regularly evaluate our accounts and notes receivable for impairment or loss of value and when appropriate, will provide in our Allowance for such receivables. We generally follow a policy of reserving for receivables due from clients in bankruptcy, clients with which we are in litigation for collection and other slow paying clients. The reserve is based upon our estimates of ultimate collectability. Correspondingly, once our recovery of a receivable is determined through litigation, bankruptcy proceedings or negotiation to be less than the recorded amount on our balance sheet, we will charge-off the applicable amount to the Allowance.

Our methodology for the Allowance is based upon a risk-based evaluation of accounts and notes receivable associated with a client's ability to make payments. Such Allowance generally consists of an initial amount established based upon criteria generally

applied if and when a client account files bankruptcy, is placed for collection/litigation and/or is considered to be pending collection/litigation.

The initial Allowance is adjusted either higher or lower when additional information is available to permit a more accurate estimate of the collectability of an account.

Summarized below for the years 2012 through 2014 are the aggregate account balances for the three Allowance criteria noted above, net write-offs of client accounts, bad debt provision and allowance for doubtful accounts.

Year Ended	Aggregate Account Balances of Clients in Bankruptcy or in/or Pending Collection/Litigation	Net Write-offs of Client Accounts	Bad Debt Provision	Allowance for Doubtful Accounts
2012	\$ 6,273,000	\$ 2,697,000	\$ 2,160,000	\$ 3,970,000
2013	\$ 6,047,000	\$ 2,041,000	\$ 1,990,000	\$ 3,919,000
2014	\$ 14,903,000	\$ 2,253,000	\$ 4,470,000	\$ 6,136,000

At December 31, 2014, we identified accounts totaling \$14,903,000 that require an Allowance based on potential impairment or loss of value. An Allowance totaling \$6,136,000 was provided for these accounts at such date. Actual collections of these accounts could differ from that which we currently estimate. If our actual collection experience is 5% less than our estimate, the related increase to our Allowance would decrease net income by approximately \$307,000.

Notwithstanding our efforts to minimize credit risk exposure, our clients could be adversely affected if future industry trends, as more fully discussed under Liquidity and Capital Resources below, and as further described in this Annual Report on Form 10-K in Part I under “Risk Factors”, “Government Regulation of Clients” and “Service Agreements/Collections”, change in such a manner as to negatively impact the cash flows of our clients. If our clients experience a negative impact in their cash flows, it would have a material adverse effect on our results of operations and financial condition.

Accrued Insurance Claims

We currently have a Paid Loss Retrospective Insurance Plan for general liability and workers’ compensation insurance, which comprise approximately 35% of our liabilities at December 31, 2014. Under our insurance plans for general liability and workers’ compensation, predetermined loss limits are arranged with our insurance company to limit both our per occurrence cash outlay and annual insurance plan cost. Our accounting for this plan is affected by various uncertainties, such as historical claims, pay-out experience, demographic factors, industry trends, severity factors, and other actuarial assumption calculated by a third party actuary. Evaluations of our accrued insurance claims estimate as of the balance sheet date are based primarily on current information derived from our actuarial valuation which assist in quantifying and valuing these trends. In the event that our claims experience and/or industry trends result in an unfavorable change resulting from, among other factors, the severity levels of reported claims and medical cost inflation, as compared to historical claim trends, it would have an adverse effect on our results of operations and financial condition. Under these plans, predetermined loss limits are arranged with an insurance company to limit both our per-occurrence cash outlay and annual insurance plan cost.

For workers’ compensation and general liability, we record a reserve for the estimated future cost of claims and related expenses that have been reported but not settled, including an estimate of claims incurred but not reported that are developed as a result of a review of our historical data and open claims, which is based on estimates provided by a third party actuary.

A summary of the changes in our total self-insurance liability is as follows:

	Year Ended December 31,		
	2014	2013	2012
Accrued insurance claims - January 1,	\$ 26,178,000	\$ 22,562,000	\$ 17,654,000
Claim payments	(24,879,000)	(26,091,000)	(25,154,000)
Reserve accruals:			
Current year accruals	30,642,000 ⁽¹⁾	19,854,000	18,365,000
Changes to the provision for prior years	36,321,000 ⁽¹⁾	9,853,000	11,697,000
Change in accrued insurance claims	\$ 42,084,000	\$ 3,616,000	\$ 4,908,000
Accrued insurance claims - December 31,	\$ 68,262,000	\$ 26,178,000	\$ 22,562,000

- (1) During 2014, the Company recorded a one-time, non-cash adjustment of \$37,416,000 related to a change in estimate related to a change in reserve methodology through the utilization of a third party actuary. This change in estimate is included in the current year accruals and changes to the provision for prior years captions in the above table.

Asset Valuations and Review for Potential Impairment

We review our fixed assets, deferred income taxes, goodwill and other intangible assets at least annually or whenever events or changes in circumstances indicate that its carrying amount may not be recoverable. This review requires that we make assumptions regarding the value of these assets and the changes in circumstances that would affect the carrying value of these assets. If such analysis indicates that a possible impairment may exist, we are then required to estimate the fair value of the asset and, as deemed appropriate, expense all or a portion of the asset. The determination of fair value includes numerous uncertainties, such as the impact of competition on future value. We believe that we have made reasonable estimates and judgments in determining whether our long-term assets have been impaired; however, if there is a material change in the assumptions used in our determination of fair value or if there is a material change in economic conditions or circumstances influencing fair value, we could be required to recognize certain impairment charges in the future. As a result of our most recent reviews, no changes in asset values were required.

Income Taxes

Deferred income taxes are recognized for the tax consequences related to temporary differences between the carrying amount of assets and liabilities for financial reporting purposes and the amounts used for tax purposes at each year-end, based on enacted tax laws and statutory tax rates applicable to the periods in which the differences are expected to affect taxable income. A valuation allowance is established when necessary based on the weight of available evidence, if it is considered more likely than not that all or some portion of the deferred tax assets will not be realized. Income tax expense is the sum of current income tax plus the change in deferred tax assets and liabilities.

We are subject to income taxes in the United States and numerous state and local jurisdictions. The determination of the income tax provision is an inherently complex process, requiring management to interpret continually changing regulations and to make certain significant judgments. Our assumptions, judgments and estimates relative to the amount of deferred income taxes take into account scheduled reversals of deferred tax liabilities, recent financial operations, estimates of the amount of future taxable income and available tax planning strategies. Actual operating results in future years could render our current assumptions, judgments and estimates inaccurate. No assurance can be given that the final impact of these matters will not be different from that which is reflected in the Company's historical income tax provisions and accruals. The Company adjusts these items in light of changing facts and circumstances. To the extent that the final impact of these matters is different than the amounts recorded, such differences could have a material effect on the income tax provisions or benefits in the periods in which such determinations are made.

Liquidity and Capital Resources

At December 31, 2014, we had cash and cash equivalents, and marketable securities of \$87,079,000 and working capital of \$216,869,000 compared to December 31, 2013 cash, cash equivalents and marketable securities of \$75,600,000 and working capital of \$210,089,000. We view our cash and cash equivalents and marketable securities as our principal measure of liquidity. Our current ratio at December 31, 2014 decreased to 2.8 to 1 from 3.1 to 1 at December 31, 2013. The increase in working capital resulted primarily from the increases in our cash and cash equivalents, marketable securities, accounts and notes receivable (from our 12.5% increase in revenues), inventories and supplies, deferred and prepaid income taxes, prepaid expenses and other, and decreases in our accounts payable and income taxes payable. This increase was partially negatively impacted by the increases in our accrued payroll, payroll taxes and other accrued expenses primarily resulting from the timing of such payments at December 31, 2014 as compared with December 31, 2013, as well as an increase in our accrued insurance claims liability. On an historical basis, our operations have produced consistent cash flow and have required limited capital resources. We believe our current and near term cash flow positions will enable us to fund our continued anticipated growth.

Operating Activities

The net cash provided by our operating activities was \$57,730,000 for the year ended December 31, 2014. The principal sources of net cash flows from operating activities for 2014 was net income adjusted for non-cash charges to operations for bad debt provisions, stock-based compensation, depreciation and amortization, deferred income taxes and unrealized gains and losses, which totaled \$20,748,000. Additionally, operating activities' cash flows increased by \$58,637,000 in 2014 as a result of the increases in accounts payable and other accrued expenses (\$492,000), accrued payroll (\$11,813,000), deferred compensation liability (\$4,248,000) and accrued insurance claims (\$42,084,000). These operating cash inflows were partially offset by the cash outflows of \$21,655,000 as a result of the increases in accounts and notes receivable, net (\$12,892,000), prepaid expenses and other assets (\$417,000), inventories and supplies (\$3,015,000), deferred compensation funding (\$2,542,000) and the decrease in income taxes payable.

Investing Activities

The net cash used in our investing activities was \$6,460,000 for the year ended December 31, 2014. The principal uses of net cash flows from investing activities for 2014 was \$748,000 of net purchases of marketable securities and \$5,795,000 for the purchase of housekeeping equipment, computer software and equipment, food service equipment and furniture & fixtures. See "Capital Expenditures" below.

Financing Activities

We have paid regular quarterly cash dividends since the second quarter of 2003. During 2014, we paid to shareholders regular quarterly cash dividends totaling \$49,077,000 as follows.

	Quarter Ended			
	March 31, 2014	June 30, 2014	September 30, 2014	December 31, 2014
Cash dividend per common share	\$ 0.17125	\$ 0.17250	\$ 0.17375	\$ 0.17500
Total cash dividends paid	\$ 12,077,000	\$ 12,186,000	\$ 12,335,000	\$ 12,479,000
Record date	February 21, 2014	May 23, 2014	August 22, 2014	November 21, 2014
Payment date	March 28, 2014	June 27, 2014	September 26, 2014	December 26, 2014

Additionally, on January 27, 2015, our Board of Directors declared a regular quarterly cash dividend of \$0.17625 per common share, which will be paid on March 27, 2015 to shareholders of record as of the close of business on February 20, 2015.

The dividends paid to shareholders during the year ended December 31, 2014 were funded by the existing cash, cash equivalents and marketable securities held by the Company. At December 31, 2014 and 2013, we had \$87,079,000 and \$75,600,000, respectively, in cash, cash equivalents and marketable securities. Our Board of Directors reviews our dividend policy on a quarterly basis. Although there can be no assurance that we will continue to pay dividends or the amount of the dividend, we expect to continue to pay a regular quarterly cash dividend. In connection with the establishment of our dividend policy, we adopted a Dividend Reinvestment Plan in 2003.

During the year ended December 31, 2014 we elected not to purchase any of our common stock but we remain authorized to purchase 1,689,000 shares of our common stock pursuant to previous Board of Directors' approvals.

During the year ended December 31, 2014, we received proceeds of \$6,196,000 from the exercise of stock options by employees and directors. Additionally, as a result of deductions derived from the stock option exercises, we recognized an income tax benefit of \$2,626,000.

Contractual Obligations

Our future contractual obligations and commitments at December 31, 2014 consist of the following:

Year Ending	Payments Due by Period				
	Total	Less Than 1 Year	1-3 Years	3-5 Years	After 5 Years
Operating Lease Obligations	\$ 7,422,000	\$ 879,000	\$ 1,372,000	\$ 1,364,000	\$ 3,807,000

During 2014, the Company extended its corporate office lease expiring February 2025.

Line of Credit

We have a \$125,000,000 bank line of credit on which we may draw to meet short-term liquidity requirements in excess of internally generated cash flow. Amounts drawn under the line of credit are payable upon demand. At December 31, 2014, there were no borrowings under the line of credit. However, at such date, we had outstanding a \$51,520,000 (increased to \$71,415,000 on January 1, 2015) irrevocable standby letter of credit which relates to payment obligations under our insurance programs. As a result of the letter of credit issued, the amount available under the line of credit was reduced by \$51,520,000 at December 31, 2014.

The line of credit requires us to satisfy one financial covenant. Such covenant and its respective status at December 31, 2014 was as follows:

Covenant Description and Requirement	Status at December 31, 2014
Funded debt ⁽¹⁾ to EBITDA ⁽²⁾ ratio: less than 3.00 to 1.00	1.14

- (1) All indebtedness for borrowed money, including but not limited to capitalized lease obligations, reimbursement obligations in respect of letters of credit and guaranties of any such indebtedness.
- (2) Net income plus interest expense plus income tax expense plus depreciation plus amortization plus extraordinary non-recurring losses/gains.

As noted above, we complied with our financial covenant at December 31, 2014 and expect to continue to remain in compliance with such financial covenant. This line of credit has a five year term and expires on December 18, 2018.

Pledged Assets and Collateral

On December 29, 2014, we entered into a Security Interest, Pledge and Assignment of Deposit Account (the "Pledge") with Wells Fargo Bank, National Association (the "Bank") as collateral for the Promissory Note (the "Note") dated December 29, 2014 between the Company's third party payroll administrator and the Bank. The Company entered into the Pledge at year end due to the timing of payroll funding and the holidays. On January 2, 2015, the Company's third party payroll administrator satisfied its payment obligation under the Note, and accordingly, the Company's Pledge was terminated. As of December 31, 2014, the cash associated with the Pledge was held in the Company's operating cash account, and used to fund the Company's operations and general operating expenses. The Company concluded that the commitment was immaterial to our statement financial position as it represented less than 6% and 5%, respectively, of current assets and total assets as of December 31, 2014. Additionally, the commitment had no material impact on the Company's consolidated results of operations for the year ended December 31, 2014.

Accounts and Notes Receivable

We expend considerable effort to collect the amounts due for our services on the terms agreed upon with our clients. Many of our clients participate in programs funded by federal and state governmental agencies which historically have encountered delays in making payments to its program participants. Congress has enacted a number of laws during the past decade that have significantly altered, or may alter, overall government reimbursement for nursing home services. Because our clients' revenues are generally dependent on Medicare and Medicaid reimbursement funding rates and mechanisms, the overall effect of these laws and trends in the long term care industry have affected and could adversely affect the liquidity of our clients, resulting in their inability to make payments to us on agreed upon payment terms. These factors, in addition to delays in payments from clients, have resulted in and could continue to result in significant additional bad debts in the near future. Whenever possible, when a client falls behind in making agreed-upon payments, we convert the unpaid accounts receivable to interest bearing promissory notes. The promissory notes receivable provide a means by which to further evidence the amounts owed and provide a definitive repayment plan and therefore may ultimately enhance our ability to collect the amounts due. At December 31, 2014 and 2013, we had \$16,945,000 and \$16,116,000, net of reserves, respectively, of such promissory notes outstanding. Additionally, we consider restructuring service agreements from full service to management-only service in the case of certain clients experiencing financial difficulties. We believe that such restructurings may provide us with a means to maintain a relationship with the client while at the same time minimizing collection exposure.

State Medicaid programs are experiencing increased demand, and with lower revenues than projected, they have fewer resources to support their Medicaid programs. In addition, comprehensive health care legislation under the Patient Protection and Affordable Care Act and the Health Care and Education Reconciliation Act of 2010 (together, the "Act") was signed into law in March 2010. The Act will significantly impact the governmental healthcare programs in which our clients participate, and reimbursements received thereunder from governmental or third-party payors. In July 2011, Centers for Medicare and Medicaid Services ("CMS") issued a final rule that reduced Medicare payments to nursing centers by 11.1% and changed the reimbursement for the provision of group rehabilitation therapy services to Medicare beneficiaries. This new rule was effective as of October 1, 2011. Furthermore, in the coming year and beyond, new proposals or additional changes in existing regulations could be made to the Act which could directly impact the governmental reimbursement programs in which our clients participate. As a result, some state Medicaid programs are reconsidering previously approved increases in nursing home reimbursement or are considering delaying or foregoing those increases. A few states have indicated it is possible they will run out of cash to pay Medicaid providers, including nursing homes. Any negative changes in our clients' reimbursements may negatively impact our results of operations. Although we are currently evaluating the Act's effect on our client base, we may not know the full effect until such time as these laws are fully implemented and CMS and other agencies issue applicable regulations or guidance. Additionally, even if federal or state legislation is enacted that provides additional funding to Medicaid providers, given the volatility of the economic environment, it is difficult to predict the impact of this legislation on our clients' liquidity and their ability to make payments to us as agreed.

In January 2013, the U.S. Congress enacted the American Taxpayer Relief Act of 2012, which delayed automatic spending cuts of \$1.2 trillion, including reduced Medicare payments to plans and providers up to 2%. These discretionary spending caps were originally enacted under provisions in the Budget Control Act of 2011, an initiative to reduce the federal deficit through the year 2021, also known as "sequestration." The sequestration went into effect starting March 2013. In December 2013, the U.S. Congress enacted the Bipartisan Budget Act of 2013, which reduces the impact of the sequestration over the next two years. This began in fiscal year 2014 and extended the reduction in Medicare payments to plans and providers for two years through the year 2023.

We have had varying collection experience with respect to our accounts and notes receivable. When contractual terms are not met, we generally encounter difficulty in collecting amounts due from certain of our clients. Therefore, we have sometimes been required to extend the period of payment for certain clients beyond contractual terms. These clients include those who have terminated service agreements and slow payers experiencing financial difficulties. In order to provide for these collection problems and the general risk associated with the granting of credit terms, we have recorded bad debt provisions (in an Allowance for Doubtful Accounts) of \$4,470,000, \$1,990,000 and \$2,160,000 in the years ended December 31, 2014, 2013 and 2012, respectively. As a percentage of total revenues, these provisions represent approximately 0.3% for the year ended December 31, 2014 and 0.2% for each of the years ended December 31, 2013 and 2012. In making our credit evaluations, in addition to analyzing and anticipating, where possible, the specific cases described above, we consider the general collection risk associated with trends in the long-term care industry. We also establish credit limits, perform ongoing credit evaluation and monitor accounts to minimize the risk of loss. Notwithstanding our efforts to minimize credit risk exposure, our clients could be adversely affected if future industry trends change in such a manner as to negatively impact their cash flows. If our clients experience a negative impact in their cash flows, it would have a material adverse effect on our results of operations and financial condition.

Insurance Programs

We self-insure or carry a high deductible, and therefore retain a substantial portion of the risk associated with the expected losses under our general liability and workers compensation programs. Under our insurance plans for general liability and workers' compensation, predetermined loss limits are arranged with our insurance company to limit both our per occurrence cash outlay and annual insurance plan cost. Our accounting for this plan is affected by various uncertainties, such as historical claims, pay-out experience, demographic factors, industry trends, severity factors, and other actuarial assumption calculated by a third party actuary. Evaluations of our accrued insurance claims estimate as of the balance sheet date are based primarily on current information derived from our actuarial valuation which assist in quantifying and valuing these trends. In the event that our claims experience and/or industry trends result in an unfavorable change resulting from, among other factors, the severity levels of reported claims and medical cost inflation, as compared to historical claim trends, it would have an adverse effect on our results of operations and financial condition. Under these plans, predetermined loss limits are arranged with an insurance company to limit both our per-occurrence cash outlay and annual insurance plan cost.

For workers' compensation and general liability, we record a reserve for the estimated future cost of claims and related expenses that have been reported but not settled, including an estimate of claims incurred but not reported that are developed as a result of a review of our historical data and open claims, which is based on estimates provided by a third party actuary.

Capital Expenditures

The level of capital expenditures is generally dependent on the number of new clients obtained. Such capital expenditures primarily consist of housekeeping equipment purchases, laundry and linen equipment installations, and computer hardware and software. Although we have no specific material commitments for capital expenditures through the end of calendar year 2015, we estimate that for the period we will have capital expenditures of \$4,500,000 to \$6,000,000 in connection with housekeeping equipment purchases, food services equipment and laundry and linen equipment installations in our clients' facilities, as well as expenditures relating to internal data processing hardware and software requirements, computer equipment and furniture & fixtures. All such capital expenditures totaled \$5,795,000 in 2014. We believe that our cash from operations, existing cash and cash equivalents balance and credit line will be adequate for the foreseeable future to satisfy the needs of our operations and to fund our anticipated growth. However, should these sources not be sufficient, we would, if necessary, seek to obtain necessary working capital from such sources as long-term debt or equity financing.

Material Off-Balance Sheet Arrangements

We have no material off-balance sheet arrangements, other than our irrevocable standby letter of credit and pledge previously discussed.

Effects of Inflation

Although there can be no assurance thereof, we believe that in most instances we will be able to recover increases in costs attributable to inflation by passing through such cost increases to our clients.

Item 7A. Quantitative and Qualitative Disclosures About Market Risk.

At December 31, 2014, we had \$87,079,000 in cash, cash equivalents and marketable securities. In accordance with U.S. GAAP, the fair value of all of our cash equivalents and marketable securities is determined based on "Level 1" or "Level 2" inputs, which consist of quoted prices whose value is based upon quoted prices for identical or similar instruments in markets that are not active, and model-based valuation techniques for which all significant assumptions are observable in the market. We place our cash investments in instruments that meet credit quality standards, as specified in our investment policy guidelines.

Investments in both fixed rate and floating rate investments carry a degree of interest rate risk. Fixed rate securities may have their market value adversely impacted due to an increase in interest rates, while floating rate securities may produce less income than expected if interest rates fall. Due in part to these factors, our future investment income may fall short of expectations due to changes in interest rates or if there is a decline in the fair value of our investments.

Item 8. Financial Statements and Supplementary Data.

INDEX TO CONSOLIDATED FINANCIAL STATEMENTS

	<u>Page</u>
Report of Independent Registered Public Accounting Firm	36
Management's Report on Internal Control Over Financial Reporting	37
Report of Independent Registered Public Accounting Firm (on Internal Control Over Financial Reporting)	38
Consolidated Financial Statements	
Consolidated Balance Sheets as of December 31, 2014 and 2013	39
Consolidated Statements of Comprehensive Income for the Years Ended December 31, 2014, 2013 and 2012	40
Consolidated Statements of Cash Flows for the Years Ended December 31, 2014, 2013 and 2012	41
Consolidated Statements of Stockholders' Equity for the years Ended December 31, 2014, 2013 and 2012	42
Notes to Consolidated Financial Statements for the Years Ended December 31, 2014, 2013 and 2012	43

REPORT OF INDEPENDENT REGISTERED PUBLIC ACCOUNTING FIRM

Board of Directors and Stockholders Healthcare Services Group, Inc.

We have audited the accompanying consolidated balance sheets of Healthcare Services Group, Inc. (a Pennsylvania corporation) and subsidiaries (the "Company") as of December 31, 2014 and 2013, and the related consolidated statements of comprehensive income, stockholders' equity, and cash flows for each of the three years in the period ended December 31, 2014. Our audits of the basic consolidated financial statements included the financial statement schedule listed in the index appearing under Item 15 (a) (2). These financial statements are the responsibility of the Company's management. Our responsibility is to express an opinion on these financial statements based on our audits.

We conducted our audits in accordance with the standards of the Public Company Accounting Oversight Board (United States). Those standards require that we plan and perform the audit to obtain reasonable assurance about whether the financial statements are free of material misstatement. An audit includes examining, on a test basis, evidence supporting the amounts and disclosures in the financial statements. An audit also includes assessing the accounting principles used and significant estimates made by management, as well as evaluating the overall financial statement presentation. We believe that our audits provide a reasonable basis for our opinion.

In our opinion, the consolidated financial statements referred to above present fairly, in all material respects, the financial position of Healthcare Services Group, Inc. and subsidiaries as of December 31, 2014 and 2013, and the results of their operations and their cash flows for each of the three years in the period ended December 31, 2014 in conformity with accounting principles generally accepted in the United States of America. Also in our opinion, the related financial statement schedule, when considered in relation to the basic consolidated financial statements taken as a whole, presents fairly, in all material respects, the information set forth therein.

We also have audited, in accordance with the standards of the Public Company Accounting Oversight Board (United States), the Company's internal control over financial reporting as of December 31, 2014, based on criteria established in the 2013 *Internal Control-Integrated Framework* issued by the Committee of Sponsoring Organizations of the Treadway Commission (COSO), and our report dated February 19, 2015 expressed an unqualified opinion.

/s/ GRANT THORNTON LLP

New York, New York
February 19, 2015

Management's Annual Report on Internal Control Over Financial Reporting

The management of Healthcare Services Group, Inc. ("Healthcare" or the "Company"), is responsible for establishing and maintaining adequate internal control over financial reporting. The Company's internal control over financial reporting is defined in Rule 13a-15(f) and 15d-15(f) promulgated under the Securities Exchange Act of 1934 as a process designed by, or under the supervision of, the Company's principal executive and principal financial officers and effected by the Company's board of directors, management and other personnel, to provide reasonable assurance regarding the reliability of financial reporting and the preparation of the Company's financial statements for external purposes in accordance with generally accepted accounting principles in the United States and includes those policies and procedures that:

1. Pertain to the maintenance of records that in reasonable detail accurately and fairly reflect the transactions and dispositions of assets of the Company;
2. Provide reasonable assurance that transactions are recorded as necessary to permit preparation of financial statements in accordance with generally accepted accounting principles, and that receipts and expenditures of the Company are being made only in accordance with authorizations of management and directors of the Company; and
3. Provide reasonable assurance regarding prevention or timely detection of unauthorized acquisition, use or disposition of the Company's assets that could have a material effect on the financial statements.

The Company's management assessed the effectiveness of the Company's internal control over financial reporting as of December 31, 2014. In making this assessment, the Company's management used the criteria set forth in Internal Control — Integrated Framework issued by the Committee of Sponsoring Organizations of the Treadway Commission (the "2013 Framework").

Under the supervision and with the participation of our management, including our principal executive officer and principal financial officer, we conducted an evaluation of our internal control over financial reporting, as prescribed above, for the period covered by this report. Based on our evaluation, our principal executive officer and principal financial officer concluded that the Company's internal control over financial reporting as of December 31, 2014 is effective as a whole.

Because of its inherent limitations, internal control over financial reporting may not prevent or detect misstatements. Projections of any evaluation of effectiveness to future periods are subject to the risk that controls may become inadequate because of changes in conditions, or that the degree of compliance with the policies or procedures may deteriorate.

The Company's independent auditors have audited, and reported on, the Company's internal control over financial reporting as of December 31, 2014.

/s/ Daniel P. McCartney

Daniel P. McCartney
Chief Executive Officer
(Principal Executive Officer)
February 19, 2015

/s/ John C. Shea

John C. Shea
Chief Financial Officer
(Principal Financial and Accounting Officer)
February 19, 2015

REPORT OF INDEPENDENT REGISTERED PUBLIC ACCOUNTING FIRM

Board of Directors and Stockholders Healthcare Services Group, Inc.

We have audited the internal control over financial reporting of Healthcare Services Group, Inc. (a Pennsylvania corporation) and subsidiaries (the “Company”) as of December 31, 2014, based on criteria established in the 2013 *Internal Control-Integrated Framework* issued by the Committee of Sponsoring Organizations of the Treadway Commission (COSO). The Company’s management is responsible for maintaining effective internal control over financial reporting and for its assessment of the effectiveness of internal control over financial reporting, included in the accompanying Management’s Annual Report on Internal Control over Financial Reporting. Our responsibility is to express an opinion on the Company’s internal control over financial reporting based on our audit.

We conducted our audit in accordance with the standards of the Public Company Accounting Oversight Board (United States). Those standards require that we plan and perform the audit to obtain reasonable assurance about whether effective internal control over financial reporting was maintained in all material respects. Our audit included obtaining an understanding of internal control over financial reporting, assessing the risk that a material weakness exists, testing and evaluating the design and operating effectiveness of internal control based on the assessed risk, and performing such other procedures as we considered necessary in the circumstances. We believe that our audit provides a reasonable basis for our opinion.

A company’s internal control over financial reporting is a process designed to provide reasonable assurance regarding the reliability of financial reporting and the preparation of financial statements for external purposes in accordance with generally accepted accounting principles. A company’s internal control over financial reporting includes those policies and procedures that (1) pertain to the maintenance of records that, in reasonable detail, accurately and fairly reflect the transactions and dispositions of the assets of the company; (2) provide reasonable assurance that transactions are recorded as necessary to permit preparation of financial statements in accordance with generally accepted accounting principles, and that receipts and expenditures of the company are being made only in accordance with authorizations of management and directors of the company; and (3) provide reasonable assurance regarding prevention or timely detection of unauthorized acquisition, use, or disposition of the company’s assets that could have a material effect on the financial statements.

Because of its inherent limitations, internal control over financial reporting may not prevent or detect misstatements. Also, projections of any evaluation of effectiveness to future periods are subject to the risk that controls may become inadequate because of changes in conditions, or that the degree of compliance with the policies or procedures may deteriorate.

In our opinion, the Company maintained, in all material respects, effective internal control over financial reporting as of December 31, 2014, based on criteria established in the 2013 *Internal Control-Integrated Framework* issued by COSO.

We also have audited, in accordance with the standards of the Public Company Accounting Oversight Board (United States), the consolidated financial statements of the Company as of and for the year ended December 31, 2014, and our report dated February 19, 2015 expressed an unqualified opinion on those financial statements.

/s/ GRANT THORNTON LLP

New York, New York
February 19, 2015

Healthcare Services Group, Inc.
Consolidated Balance Sheets

	December 31,	
	2014	2013
ASSETS:		
Current assets:		
Cash and cash equivalents	\$ 75,280,000	\$ 64,155,000
Marketable securities, at fair value	11,799,000	11,445,000
Accounts and notes receivable, less allowance for doubtful accounts of \$6,136,000 in 2014 and \$3,919,000 in 2013	198,128,000	189,107,000
Inventories and supplies	35,462,000	32,447,000
Deferred income taxes	3,455,000	2,339,000
Prepaid income taxes	912,000	—
Prepaid expenses and other	9,792,000	9,699,000
Total current assets	<u>334,828,000</u>	<u>309,192,000</u>
Property and equipment:		
Laundry and linen equipment installations	2,578,000	2,516,000
Housekeeping and office equipment and furniture	33,546,000	29,182,000
Autos and trucks	232,000	305,000
	<u>36,356,000</u>	<u>32,003,000</u>
Less accumulated depreciation	<u>23,584,000</u>	<u>20,699,000</u>
	12,772,000	11,304,000
Goodwill	44,438,000	40,183,000
Other intangible assets, less accumulated amortization of \$16,232,000 in 2014 and \$12,909,000 in 2013	20,349,000	23,372,000
Notes receivable — long term portion, net of reserve	5,179,000	5,779,000
Deferred compensation funding, at fair value	24,742,000	22,200,000
Deferred income taxes — long term portion	27,233,000	13,274,000
Other noncurrent assets	38,000	38,000
Total Assets	<u>\$ 469,579,000</u>	<u>\$ 425,342,000</u>
LIABILITIES AND STOCKHOLDERS' EQUITY:		
Current liabilities:		
Accounts payable	\$ 43,554,000	\$ 43,682,000
Accrued payroll, accrued and withheld payroll taxes	47,696,000	37,162,000
Other accrued expenses	8,961,000	8,528,000
Income taxes payable	—	1,878,000
Accrued insurance claims	17,748,000	7,853,000
Total current liabilities	<u>117,959,000</u>	<u>99,103,000</u>
Accrued insurance claims — long term portion	50,514,000	18,325,000
Deferred compensation liability	25,276,000	22,771,000
Commitments and contingencies		
STOCKHOLDERS' EQUITY:		
Common stock, \$.01 par value; 100,000,000 shares authorized; 72,878,000 shares issued and outstanding in 2014 and 71,868,000 shares issued and outstanding in 2013	729,000	719,000
Additional paid-in capital	186,022,000	168,329,000
Retained earnings	100,237,000	127,464,000
Accumulated other comprehensive income, net of taxes	25,000	49,000
Common stock in treasury, at cost, 1,821,000 shares in 2014 and 1,892,000 shares in 2013	(11,183,000)	(11,418,000)
Total stockholders' equity	<u>275,830,000</u>	<u>285,143,000</u>
TOTAL LIABILITIES AND STOCKHOLDERS' EQUITY	<u>\$ 469,579,000</u>	<u>\$ 425,342,000</u>

See accompanying notes.

Healthcare Services Group, Inc.
Consolidated Statements of Comprehensive Income

	Years Ended December 31,		
	2014	2013	2012
Revenues	\$ 1,293,183,000	\$ 1,149,890,000	\$ 1,077,435,000
Operating costs and expenses:			
Costs of services provided	1,155,293,000	995,104,000	930,814,000
Selling, general and administrative	107,810,000	91,998,000	79,277,000
Other income:			
Investment and interest	1,628,000	3,701,000	2,920,000
Income before income taxes	31,708,000	66,489,000	70,264,000
Income taxes	9,858,000	19,360,000	26,050,000
Net income	\$ 21,850,000	\$ 47,129,000	\$ 44,214,000
Per share data:			
Basic earnings per common share	\$ 0.31	\$ 0.68	\$ 0.65
Diluted earnings per common share	\$ 0.31	\$ 0.67	\$ 0.65
Weighted average number of common shares outstanding:			
Basic	70,616,000	69,206,000	67,511,000
Diluted	71,341,000	70,045,000	68,485,000
Comprehensive income:			
Net income	\$ 21,850,000	\$ 47,129,000	\$ 44,214,000
Other comprehensive income:			
Unrealized loss on available for sale marketable securities, net of taxes	(24,000)	(78,000)	(216,000)
Total comprehensive income	\$ 21,826,000	\$ 47,051,000	\$ 43,998,000

See accompanying notes.

Healthcare Services Group, Inc.
Consolidated Statements of Cash Flows

	Years Ended December 31,		
	2014	2013	2012
Cash flows from operating activities:			
Net income	\$ 21,850,000	\$ 47,129,000	\$ 44,214,000
Adjustments to reconcile net income to net cash provided by operating activities:			
Depreciation and amortization	7,269,000	6,204,000	5,116,000
Bad debt provision	4,470,000	1,990,000	2,160,000
Deferred income tax benefits	(15,059,000)	(4,922,000)	(3,493,000)
Stock-based compensation expense	3,080,000	2,607,000	2,538,000
Amortization of premium on marketable securities	354,000	537,000	654,000
Unrealized loss on marketable securities	—	—	82,000
Unrealized gain on deferred compensation fund investments	(1,216,000)	(2,820,000)	(1,871,000)
Changes in operating assets and liabilities:			
Accounts and notes receivable	(13,492,000)	(50,879,000)	(11,634,000)
Prepaid income taxes	—	—	405,000
Inventories and supplies	(3,015,000)	(3,772,000)	(3,531,000)
Notes receivable — long term	600,000	(3,956,000)	(340,000)
Deferred compensation funding	(2,542,000)	(4,369,000)	(4,051,000)
Accounts payable and other accrued expenses	492,000	25,961,000	13,664,000
Accrued payroll, accrued and withheld payroll taxes	11,813,000	6,349,000	6,142,000
Accrued insurance claims	42,084,000	3,616,000	4,908,000
Deferred compensation liability	4,248,000	7,721,000	6,337,000
Income taxes payable	(2,789,000)	(28,000)	1,906,000
Prepaid expenses and other assets	(417,000)	790,000	(2,830,000)
Net cash provided by operating activities	<u>57,730,000</u>	<u>32,158,000</u>	<u>60,376,000</u>
Cash flows from investing activities:			
Disposals of fixed assets	83,000	158,000	26,000
Additions to property and equipment	(5,795,000)	(3,762,000)	(3,484,000)
Purchases of marketable securities	(5,140,000)	(6,598,000)	(10,833,000)
Sales of marketable securities	4,392,000	15,807,000	19,978,000
Cash paid for acquisition	—	(5,000,000)	—
Net cash (used in) provided by investing activities	<u>(6,460,000)</u>	<u>605,000</u>	<u>5,687,000</u>
Cash flows from financing activities:			
Dividends paid	(49,077,000)	(46,707,000)	(44,093,000)
Reissuance of treasury stock pursuant to Dividend Reinvestment Plan	110,000	107,000	118,000
Tax benefit from equity compensation plans	2,626,000	2,615,000	2,649,000
Proceeds from the exercise of stock options	6,196,000	6,428,000	5,573,000
Net cash used in financing activities	<u>(40,145,000)</u>	<u>(37,557,000)</u>	<u>(35,753,000)</u>
Net change in cash and cash equivalents	11,125,000	(4,794,000)	30,310,000
Cash and cash equivalents at beginning of the period	64,155,000	68,949,000	38,639,000
Cash and cash equivalents at end of the period	<u>\$ 75,280,000</u>	<u>\$ 64,155,000</u>	<u>\$ 68,949,000</u>
Supplementary Cash Flow Information:			
Cash paid for interest	\$ 156,000	\$ 4,000	\$ 3,000
Cash paid for income taxes, net of refunds	<u>\$ 25,080,000</u>	<u>\$ 21,694,000</u>	<u>\$ 24,681,000</u>

See accompanying notes.

Healthcare Services Group, Inc.
Consolidated Statements of Stockholders' Equity

Years Ended December 31, 2014, 2013 and 2012

	Common Stock		Additional Paid-in Capital	Accumulated Other Comprehensive Income, net of taxes	Retained Earnings	Treasury Stock	Stockholders' Equity
	Shares	Amount					
Balances, December 31, 2011	69,473,000	695,000	105,727,000	343,000	126,921,000	(15,960,000)	217,726,000
Comprehensive income:							
Net income for the period					44,214,000		44,214,000
Unrealized loss on available for sale marketable securities, net of taxes				(216,000)			(216,000)
Comprehensive income							43,998,000
Exercise of stock options and other stock-based compensation, net of shares tendered for payment	563,000	5,000	4,098,000			1,470,000	5,573,000
Tax benefit from equity compensation plans			2,649,000				2,649,000
Share-based compensation expense — stock options and restricted stock			1,897,000				1,897,000
Treasury shares issued for Deferred Compensation Plan funding and redemptions			394,000			59,000	453,000
Shares issued pursuant to Employee Stock Plans			1,278,000			(29,000)	1,249,000
Cash dividends					(44,093,000)		(44,093,000)
Shares issued pursuant to Dividend Reinvestment Plan			85,000			33,000	118,000
Shares issued pursuant to prior year acquisition			(2,633,000)			2,633,000	—
Balance, December 31, 2012	70,036,000	700,000	113,495,000	127,000	127,042,000	(11,794,000)	229,570,000
Comprehensive income:							
Net income for the period					47,129,000		47,129,000
Unrealized loss on available for sale marketable securities, net of taxes				(78,000)			(78,000)
Comprehensive income							47,051,000
Exercise of stock options and other stock-based compensation, net of shares tendered for payment	617,000	7,000	6,381,000			40,000	6,428,000
Tax benefit from equity compensation plans			2,615,000				2,615,000
Share-based compensation expense — stock options and restricted stock			2,045,000				2,045,000
Treasury shares issued for Deferred Compensation Plan funding and redemptions			294,000			66,000	360,000
Shares issued pursuant to Employee Stock Plans			1,370,000			472,000	1,842,000
Cash dividends					(46,707,000)		(46,707,000)
Shares issued pursuant to Dividend Reinvestment Plan			309,000			(202,000)	107,000
Shares issued pursuant to current year acquisition	1,215,000	12,000	41,820,000			—	41,832,000
Balance, December 31, 2013	71,868,000	\$ 719,000	\$ 168,329,000	\$ 49,000	\$ 127,464,000	\$ (11,418,000)	\$ 285,143,000
Comprehensive income:							
Net income for the period					21,850,000		21,850,000
Unrealized loss on available for sale marketable securities, net of taxes				(24,000)			(24,000)
Comprehensive income							21,826,000
Exercise of stock options and other stock-based compensation, net of shares tendered for payment	534,000	5,000	6,191,000				6,196,000
Tax benefit from equity compensation plans			2,626,000				2,626,000
Share-based compensation expense — stock options and restricted stock			2,705,000				2,705,000
Treasury shares issued for Deferred Compensation Plan funding and redemptions			459,000			57,000	516,000
Shares issued pursuant to Employee Stock Plans			1,457,000			394,000	1,851,000
Cash dividends					(49,077,000)		(49,077,000)
Shares issued pursuant to Dividend Reinvestment Plan			326,000			(216,000)	110,000
Adjustment to purchase price allocation			3,934,000				3,934,000
Shares issued pursuant to prior year acquisition	476,000	5,000	(5,000)				—
Balance, December 31, 2014	72,878,000	\$ 729,000	\$ 186,022,000	\$ 25,000	\$ 100,237,000	\$ (11,183,000)	\$ 275,830,000

See accompanying notes.

Healthcare Services Group, Inc.
Notes to Consolidated Financial Statements
Years Ended December 31, 2014, 2013 and 2012

Note 1— Description of Business and Significant Accounting Policies

Nature of Operations

We provide management, administrative and operating expertise and services to the housekeeping, laundry, linen, facility maintenance and dietary service departments of the health care industry, including nursing homes, retirement complexes, rehabilitation centers and hospitals located throughout the United States. Although we do not directly participate in any government reimbursement programs, our clients' reimbursements are subject to government regulation. Therefore, they are directly affected by any legislation relating to Medicare and Medicaid reimbursement programs.

We provide our services primarily pursuant to full service agreements with our clients. In such agreements, we are responsible for the day to day management of the managers and hourly employees located at our clients' facilities. We also provide services on the basis of a management-only agreement for a very limited number of clients. Our agreements with clients typically provide for a one year service term, cancelable by either party upon 30 to 90 days' notice after the initial 90-day period.

We are organized into two reportable segments; housekeeping, laundry, linen and other services ("Housekeeping"), and dietary department services ("Dietary").

Housekeeping consists of the managing of the client's housekeeping department which is principally responsible for the cleaning, disinfecting and sanitizing of patient rooms and common areas of a client's facility, as well as the laundering and processing of the personal clothing belonging to the facility's patients. Also within the scope of this segment's service is the responsibility for laundering and processing of the bed linens, uniforms and other assorted linen items utilized by a client facility.

Dietary consists of managing the client's dietary department which is principally responsible for food purchasing, meal preparation and providing dietitian consulting professional services, which includes the development of a menu that meets the patient's dietary needs.

Principles of Consolidation

The accompanying consolidated financial statements include the accounts of Healthcare Services Group, Inc. and its wholly-owned subsidiaries. All significant intercompany transactions and balances have been eliminated in consolidation.

Fair Value of Financial Instruments

Our financial instruments consist principally of cash and cash equivalents, marketable securities, accounts and notes receivable, deferred compensation funding and accounts payable. Our marketable securities consist of tax-exempt municipal bond investments that are reported at fair value with the unrealized gains and losses included in our consolidated statements of comprehensive income. In accordance with generally accepted accounting principles in the United States ("U.S. GAAP"), we define fair value as the price that would be received to sell an asset or paid to transfer a liability in an orderly transaction between market participants at the measurement date (exit price). The fair value of our cash equivalents and marketable securities is determined based on "Level 2" inputs, which consists of quoted prices for similar assets or market corroborated inputs. We believe recorded values of all of our financial instruments approximate their current fair values because of their nature, stated interest rates and respective maturity dates or durations.

We have certain notes receivable that either do not bear interest or bear interest at a below market rate. Therefore, such notes receivable of \$10,208,000 and \$2,892,000 at December 31, 2014 and 2013, respectively, have been discounted to their present value and are reported at values of \$10,196,000 and \$2,880,000 at December 31, 2014 and 2013, respectively.

Cash and Cash Equivalents

Cash and cash equivalents are held in U.S. financial institutions or in custodial accounts with U.S. financial institutions. Cash and cash equivalents are defined as short-term, highly liquid investments with a maturity of three months or less at time of purchase that are readily convertible into cash and have insignificant interest rate risk.

Investments in Marketable Securities

We define our marketable securities as fixed income investments which are highly liquid investments that can be readily purchased or sold using established markets. At December 31, 2014, we had marketable securities of \$11,799,000 which were comprised primarily of tax exempt municipal bonds. These investments are reported at fair value on our balance sheet. For the year ended December 31, 2014, the accumulated other comprehensive income on our consolidated balance sheet, statements of comprehensive income and stockholders' equity includes unrealized gains from marketable securities of \$25,000 related to marketable securities which are not recognized under the fair value option in accordance with U.S. GAAP. The unrealized gains and losses are recorded net of income taxes.

We, in accordance with U.S. GAAP, define fair value as the price that would be received to sell an asset or paid to transfer a liability in an orderly transaction between market participants at the measurement date (exit price). We have not elected the fair value option for our available for sale marketable securities as we believe these assets are more representative of our investing activities and are viewed as non-operating in nature. These assets are available for future needs of the Company to support our current and projected growth, if required. In accordance with U.S. GAAP, our investments in marketable securities are classified within Level 2 of the fair value hierarchy. These investment securities are valued based upon quoted prices for identical or similar instruments in markets that are not active, and model-based valuation techniques for which all significant assumptions are observable in the market.

Our investment policy is to seek to manage these assets to achieve our goal of preserving principal, maintaining adequate liquidity at all times, and maximizing returns subject to our investment guidelines. Our investment policy limits investment to certain types of instruments issued by institutions primarily with investment grade credit ratings and places restrictions on maturities and concentration by type and issuer.

We periodically review our investments in marketable securities for other than temporary declines in fair value below the cost basis and whenever events or changes in circumstances indicate that the carrying amount of an asset may not be recoverable. As of December 31, 2014, we believe that recorded value of our investments in marketable securities was recoverable in all material respects.

Inventories and Supplies

Inventories and supplies include housekeeping, linen and laundry supplies, as well as food provisions and supplies. Inventories and supplies are stated at cost to approximate a first-in, first-out (FIFO) basis. Linen supplies are amortized on a straight-line basis over their estimated useful life of 24 months.

Property and Equipment

Property and equipment are stated at cost. Additions, renewals and improvements are capitalized, while maintenance and repair costs are expensed when incurred. When assets are retired or otherwise disposed of, the cost and related accumulated depreciation are removed from the respective accounts and any resulting gain or loss is included in income. Depreciation is provided by the straight-line method over the following estimated useful lives: laundry and linen equipment installations — 3 to 7 years; housekeeping, and office furniture and equipment — 3 to 7 years; autos and trucks — 3 years. Depreciation expense on property and equipment for the years ended December 31, 2014, 2013 and 2012 was \$3,946,000, \$3,373,000 and \$2,947,000, respectively.

Revenue Recognition

Revenues from our service agreements with clients are recognized as services are performed. Revenues are reported net of sales taxes that are collected from customers and remitted to taxing authorities.

As a distributor of laundry equipment, we occasionally sell laundry installations to certain clients. The sales in most cases represent the construction and installation of a turn-key operation and are for payment terms ranging from 24 to 60 months. Our accounting policy for these sales is to recognize the gross profit over the life of the payments associated with our financing of the transactions. During 2014, 2013 and 2012, laundry installation sales were not material.

Income Taxes

We use the asset and liability method of accounting for income taxes. Under this method, income tax expense is recognized for the amount of taxes payable or refundable for the current year. We accrue for probable tax obligations as required by facts and circumstances in the various regulatory environments. In addition, deferred tax assets and liabilities are recognized for expected future tax consequences of temporary differences between the financial reporting and tax bases of assets and liabilities. If appropriate, we would record a valuation allowance to reduce deferred tax assets to an amount for which realization is more likely than not. Deferred tax assets and liabilities are more fully described in subsequent Notes to the Consolidated Financial Statements.

In accordance with U.S. GAAP, we account for uncertain income tax positions reflected within our financial statements based on a recognition threshold and measurement process for financial statement recognition and measurement of a tax position taken or expected to be taken in a tax return.

Earnings per Common Share

Basic earnings per common share are computed by dividing income available to common shareholders by the weighted-average common shares outstanding for the period. Diluted earnings per common share reflect the weighted-average common shares outstanding and dilutive common shares, such as those issuable upon exercise of stock options.

Share-Based Compensation

U.S. GAAP addresses the accounting for share-based compensation, specifically, the measurement and recognition of compensation expense, based on estimated fair values, for all share-based awards made to employees and directors, including stock options and participation in the Company's employee stock purchase plan. We estimate the fair value of share-based awards on the date of grant using the Black-Scholes option valuation model. The value of the portion of the award that is ultimately expected to vest is recognized as an expense in the Company's consolidated statements of income over the requisite service periods. We use the straight-line single option method of expensing share-based awards in our consolidated financial statements of income. Because share-based compensation expense is based on awards that are ultimately expected to vest, share-based compensation expense will be reduced to account for estimated forfeitures. Forfeitures are to be estimated at the time of grant and revised, if necessary, in subsequent periods if actual forfeitures differ from those estimates.

Advertising Costs

Advertising costs are expensed when incurred. Advertising costs were not material for the years ended December 31, 2014, 2013 and 2012.

Impairment of Long-Lived Assets

We account for long-lived assets in accordance with the criteria established in U.S. GAAP, which states that the carrying amounts of long-lived assets be periodically reviewed to determine whether current events or circumstances warrant adjustment to such carrying amounts. Any impairment is measured by the amount that the carrying value of such assets exceeds their fair value, primarily based on estimated discounted cash flows. Considerable management judgment is necessary to estimate the fair value of assets. Assets to be disposed of are carried at the lower of their financial statement carrying amount or fair value, less cost to sell.

Acquisitions

We acquire businesses and/or assets that augment and complement our operations from time to time. These acquisitions are accounted for under the purchase method of accounting. The consolidated financial statements include the results of operations from such business combinations as of the date of acquisition.

Identifiable Intangible Assets and Goodwill

Identifiable intangible assets with finite lives are amortized on a straight-line basis over their respective lives. Goodwill represents the excess of costs over the fair value of net assets of the acquired business. We review the carrying values of goodwill at least annually during the fourth quarter of each year to assess impairment because these assets are not amortized. Additionally, we review the carrying value of any intangible asset or goodwill whenever events or changes in circumstances indicate that its carrying amount may not be recoverable. We assess impairment by comparing the fair value of an identifiable intangible asset or reporting unit with its carrying value. Impairments are recorded when incurred. No impairment loss was recognized on our intangible assets for the years ended December 31, 2014, 2013 or 2012.

Treasury Stock

Treasury stock purchases are accounted for under the cost method whereby the entire cost of the acquired stock is recorded as treasury stock. Gains or losses on the subsequent reissuance of shares are credited or charged to additional paid in capital.

Reclassification

Certain prior period amounts have been reclassified to conform to current year presentation.

Use of Estimates in Financial Statements

In preparing financial statements in conformity with U.S. GAAP, we make estimates and assumptions that affect the reported amounts of assets and liabilities and disclosures of contingent assets and liabilities at the date of the financial statements, as well as the reported amounts of expenses during the reporting period. Actual results could differ from those estimates. Significant estimates are used for, but not limited to, our allowance for doubtful accounts, accrued insurance claims, asset valuations and review for potential impairment, and deferred taxes. The estimates are based upon various factors including current and historical trends, as well as other pertinent industry and regulatory authority information. We regularly evaluate this information to determine if it is necessary to update the basis for our estimates and to compensate for known changes.

Change in Accounting Estimate

In fiscal year 2015, the Company expects to transition its workers compensation and certain employee health & welfare insurance programs to HCSG Insurance Corp. ("HCSG Insurance" or the "Captive"), its wholly owned captive insurance subsidiary. HCSG Insurance currently provides general liability coverage to the Company. HCSG Insurance was formed in January 2014 to provide the Company with greater flexibility and cost efficiency in meeting its property & casualty and health & welfare needs. In conjunction with the aforementioned insurance programs being administered and provided by the Captive, during the third quarter 2014, management conducted a review of its self-insurance reserves to enhance its self-insurance estimation process. After analysis and consultation with insurance regulators and advisors, the Company recorded a non-cash adjustment of \$37,416,000 to reflect estimated current and future insurance claims projected to be closed out over the next 15 to 17 years. This tax-effected adjustment of approximately \$0.33 per diluted share, was recorded in the third quarter 2014 and is accounted for as a change in estimate, along with charges related to the corporate reorganization, self-funded health insurance program transition and other related expenses, is recorded in our consolidated statements of comprehensive income.

Concentrations of Credit Risk

The accounting guidance requires the disclosure of significant concentrations of credit risk, regardless of the degree of such risk. Financial instruments, as defined by U.S. GAAP, which potentially subject us to concentrations of credit risk, consist principally of cash and cash equivalents, marketable securities, deferred compensation funding and accounts and notes receivable. We define our marketable securities as fixed income investments which are highly liquid investments that can be readily purchased or sold using established markets. At December 31, 2014 and 2013, substantially all of our cash and cash equivalents, and marketable securities were held in one large financial institution located in the United States.

Our clients are concentrated in the health care industry, primarily providers of long-term care. Many of our clients' revenues are highly contingent on Medicare, Medicaid and third party payors' reimbursement funding rates. Congress has enacted a number of major laws during the past decade that have significantly altered, or threatened to alter, overall government reimbursement for nursing home services. These changes and lack of substantive reimbursement funding rate reform legislation, as well as other trends in the long-term care industry have affected and could adversely affect the liquidity of our clients, resulting in their inability to make payments to us on agreed upon payment terms. These factors, in addition to delays in payments from clients, have resulted in, and could continue to result in, significant additional bad debts in the future.

State Medicaid programs are experiencing increased demand, and with lower revenues than projected, they have fewer resources to support their Medicaid programs. In addition, comprehensive health care legislation under the Patient Protection and Affordable Care Act and the Health Care and Education Reconciliation Act of 2010 (together, the "Act") was signed into law in March 2010. The Act will significantly impact the governmental healthcare programs in which our clients participate, and reimbursements received thereunder from governmental or third-party payors. Furthermore, in the coming year and beyond, new proposals or additional changes in existing regulations could be made to the Act which could directly impact the governmental reimbursement programs in which our clients participate. As a result, some state Medicaid programs are reconsidering previously approved increases in nursing home reimbursement or are considering delaying or foregoing those increases. A few states have indicated that it is possible they will run out of cash to pay Medicaid providers, including nursing homes. Any negative changes in our clients' reimbursements may negatively impact our results of operations. Although we are currently evaluating the Act's effect on our client base, we may not know the full effect until such time as these laws are fully implemented and Centers for Medicare and Medicaid Services ("CMS") and other agencies issue applicable regulations or guidance.

In 2009 and 2010, Federal economic stimulus legislation was enacted to counter the impact of the economic crisis on state budgets. The legislation included the temporary provision of additional federal matching funds to help states maintain their Medicaid programs. This legislation to provide states with an extension of this fiscal relief was extended through June 2011, but at a reduced reimbursement rate. In July 2011, CMS issued a final rule that reduced Medicare payments to nursing centers by 11.1% and changed the reimbursement for the provision of group rehabilitation therapy services to Medicare beneficiaries. This new rule was effective as of October 1, 2011. Even if federal or state legislation is enacted that provides additional funding to Medicaid providers, given the volatility of the economic environment, it is difficult to predict the impact of this legislation on our clients' liquidity and their ability to make payments to us as agreed.

In January 2013, the U.S. Congress enacted the American Taxpayer Relief Act of 2012, which delayed automatic spending cuts, including reduced Medicare payments to plans and providers up to 2%. These discretionary spending caps were originally enacted under provisions in the Budget Control Act of 2011, an initiative to reduce the federal deficit through the year 2021, also known as "sequestration." The sequestration went into effect starting March 2013. In December 2013, the U.S. Congress enacted the Bipartisan Budget Act of 2013, which reduces the impact of the sequestration over the next two years. This began in fiscal year 2014 and extended the reduction in Medicare payments to plans and providers for two years through the year 2023.

Significant Clients

We have several clients who each have made a contribution to our total consolidated revenues ranging from 3% to 6% for the year ended December 31, 2014. Although we expect to continue relationships with these clients, there can be no assurance thereof. The loss of such clients, or a significant reduction in the revenues we receive from these clients, would have a material adverse effect on the results of operations of our two operating segments. In addition, if such clients change their respective payment terms it could increase our accounts receivable balance and have a material adverse effect on our cash flows and cash and cash equivalents.

Recent Accounting Pronouncements

In August 2014, the Financial Accounting Standards Board issued Accounting Standards Update ("ASU") 2015-15, Presentation of Financial Statements - Going Concern (Subtopic 205-40). This ASU will require an entity's management, for each annual and interim reporting period, to evaluate whether there are conditions or events, considered in the aggregate, that raise substantial doubt about the entity's ability to continue as a going concern within one year after the date that the financial statements are issued. The definition of substantial doubt within this ASU incorporates a likelihood threshold of "probable" similar to the use of that term under current guidance for Topic 450, Contingencies. Certain disclosures will be required if conditions give rise to substantial doubt. This ASU is effective for the annual period ending after December 15, 2016, and for annual periods and interim periods thereafter, with early adoption permitted. The Company does not expect the amendment to have a material impact on the consolidated financial statements and related disclosures.

In May 2014, the Financial Accounting Standards Board issued ASU 2014-09, Revenue from Contracts with Customer (Topic 606). This ASU establishes core principles that should assist an entity in recognizing revenue to depict the transfer of promised goods or services to customers in an amount that reflects the consideration to which the entity expects to be entitled in exchange for those goods or services. The guidance in this ASU supersedes the current revenue recognition requirements in Revenue Recognition (Topic 605), and most industry-specific guidance throughout the Industry Topics of the Codification. This ASU is effective for fiscal years and interim periods beginning on or after December 15, 2016, with early adoption prohibited. The Company is currently assessing the impact this guidance will have, if any, on our consolidated results of operations, cash flows, or financial position.

Note 2—Acquisition

On July 12, 2013, the Company acquired substantially all of the operating assets of Platinum Health Services, LLC, a Delaware limited liability company and Platinum Health Services PEO, LLC, a Delaware limited liability company (collectively "Platinum"). Platinum was a privately-held provider of professional housekeeping, laundry and maintenance services to long-term and post-acute care facilities and operated within the United States. The acquisition has been included within the consolidated results of operations and financial condition from the date of the acquisition.

The total purchase consideration was \$50,766,000, which consisted of a cash payment of \$5,000,000, the issuance of 1,215,000 shares of the Company's common stock with a fair value of \$30,062,000 and contingent consideration with a fair value of \$15,704,000 as of December 31, 2014.

Upon the achievement of certain financial and retention targets, the Platinum stockholders are eligible for contingent consideration paid by the future issuance of 1,005,000 shares of the Company's common stock. As of December 31, 2014, 476,000 shares of contingent consideration have been earned and distributed to the Platinum stockholders. The remaining 529,000 shares may be issued to the Platinum stockholders upon the achievement of certain financial targets. The Company's obligation to pay contingent consideration has been appropriately classified as equity within the financial statements.

The purchase consideration of the acquisition has been allocated to the assets acquired and liabilities assumed based on estimated fair values. The purchase price allocation was completed in the second quarter of 2014. The purchase price allocation is as follows:

	Purchase Price Allocation		
	Preliminary	Adjustments	Final
Fair value of assets acquired, net of liabilities assumed	\$ 2,604,000	\$ (621,000)	\$ 1,983,000
Goodwill	23,228,000	4,255,000	27,483,000
Intangible assets	21,000,000	300,000	21,300,000
Net assets acquired	<u>\$ 46,832,000</u>	<u>\$ 3,934,000</u>	<u>\$ 50,766,000</u>

Goodwill, which is expected to be amortized for tax purposes, represents the excess of the purchase price over the fair value of the net assets acquired, and is primarily attributable to the assembled workforce of the acquired business. Goodwill was allocated to our Housekeeping reportable operating segment. Intangible assets consist of customer relationships of \$21,300,000 and has been assigned an estimated useful life of 10 years.

Note 3—Changes in Accumulated Other Comprehensive Income by Component

U.S. GAAP establishes standards for presenting information about significant items reclassified out of accumulated other comprehensive income by component. As of December 31, 2014 and 2013, respectively, we generated other comprehensive income from one component. This component relates to the unrealized gains and losses from our available for sale marketable securities during a given reporting period.

The following table provides a summary of changes in accumulated other comprehensive income:

	Unrealized Gains and Losses on Available for Sale Securities (1)
Accumulated other comprehensive income — December 31, 2013	\$ 49,000
Other comprehensive income (loss) before reclassifications	(16,000)
Amounts reclassified from accumulated other comprehensive income (2)(3)	(8,000)
Net current period change in other comprehensive income	(24,000)
Accumulated other comprehensive income — December 31, 2014	\$ 25,000

(1) All amounts are net of tax.

(2) Realized gains and losses are recorded pre-tax in the other income - investment and interest caption on our consolidated statements of comprehensive income.

(3) The Company recorded \$12,000 of realized gains from the sale of available for sale securities. Refer to Note 5 herein for further information.

Note 4—Goodwill and Other Intangible Assets

Goodwill represents the excess of the purchase price over the fair value of net assets acquired of businesses and is not amortized. Goodwill is evaluated for impairment on an annual basis, or more frequently if impairment indicators arise, using a fair-value-based test that compares the fair value of the reporting unit to its carrying value. The carrying value of goodwill as of December 31, 2014 and 2013 was \$44,438,000 and \$40,183,000, respectively.

The changes in the carrying values of goodwill by reportable operating segment, as described in Note 14 herein, were as follows:

	Reportable Segments		
	Housekeeping	Dietary	Total
December 31, 2013	\$ 38,122,000	\$ 2,061,000	\$ 40,183,000
Adjustment to purchase price allocation	4,255,000	—	4,255,000
December 31, 2014	\$ 42,377,000	\$ 2,061,000	\$ 44,438,000

The cost of intangible assets is based on fair values at the date of acquisition. Intangible assets with determinable lives are amortized on a straight-line basis over their estimated useful life (between 7 and 10 years).

The following table sets forth the amounts of our identifiable intangible assets subject to amortization, which were acquired in acquisitions.

	December 31,	
	2014	2013
Customer relationships	\$ 35,781,000	\$ 35,481,000
Non-compete agreements	800,000	800,000
Total other intangibles, gross	36,581,000	36,281,000
Less accumulated amortization	16,232,000	12,909,000
Other intangibles, net	\$ 20,349,000	\$ 23,372,000

The customer relationships and non-compete agreements have a weighted-average amortization period of eight years. As of December 31, 2014, the Company's non-compete agreements have been fully amortized.

The following table sets forth the estimated amortization expense for intangibles subject to amortization for the following five fiscal years:

Period/Year	Customer Relationships	Total
2015	\$ 3,241,000	\$ 3,241,000
2016	2,698,000	2,698,000
2017	2,427,000	2,427,000
2018	2,328,000	2,328,000
2019	2,130,000	2,130,000
Thereafter	7,525,000	7,525,000

Amortization expense for the years ended December 31, 2014, 2013 and 2012 was \$3,323,000, \$2,831,000 and \$2,169,000, respectively.

Note 5—Fair Value Measurements

We, in accordance with U.S. GAAP, define fair value as the price that would be received to sell an asset or paid to transfer a liability in an orderly transaction between market participants at the measurement date (exit price). We have not elected the fair value option for our available for sale marketable securities as we believe these assets are more representative of our investing activities and are viewed as non-operating in nature. These assets are available for future needs of the Company to support our current and projected growth, if required. In accordance with U.S. GAAP, our investments in marketable securities are classified within Level 2 of the fair value hierarchy. These investment securities are valued based upon quoted prices for identical or similar instruments in markets that are not active, and model-based valuation techniques for which all significant assumptions are observable in the market.

The Company's financial instruments consist mainly of cash and cash equivalents, available for sale marketable securities, accounts and notes receivable, prepaid expenses and other, and accounts payable (including income taxes payable and accrued expenses). The carrying value of these financial instruments approximates their fair value because of their short-term nature. The fair value of financial instruments is defined as the amount at which the instrument could be exchanged in a current transaction between willing parties.

The following tables provide fair value measurement information for our marketable securities and deferred compensation fund investment assets as of December 31, 2014 and 2013:

	As of December 31, 2014				
	Carrying Amount	Total Fair Value	Fair Value Measurement Using:		
			Quoted Prices in Active Markets (Level 1)	Significant Other Observable Inputs (Level 2)	Significant Unobservable Inputs (Level 3)
Financial Assets:					
Marketable securities					
Municipal bonds — available for sale	\$ 11,799,000	\$ 11,799,000	\$ —	\$ 11,799,000	\$ —
Deferred compensation fund					
Money Market	\$ 4,278,000	\$ 4,278,000	\$ —	\$ 4,278,000	\$ —
Balanced and Lifestyle	8,885,000	8,885,000	8,885,000	—	—
Large Cap Growth	4,856,000	4,856,000	4,856,000	—	—
Small Cap Value	2,392,000	2,392,000	2,392,000	—	—
Fixed Income	2,081,000	2,081,000	2,081,000	—	—
International	1,097,000	1,097,000	1,097,000	—	—
Mid Cap Growth	1,153,000	1,153,000	1,153,000	—	—
Deferred compensation fund	\$ 24,742,000	\$ 24,742,000	\$ 20,464,000	\$ 4,278,000	\$ —

As of December 31, 2013

	Carrying Amount	Total Fair Value	Fair Value Measurement Using:		
			Quoted Prices in Active Markets (Level 1)	Significant Other Observable Inputs (Level 2)	Significant Unobservable Inputs (Level 3)
Financial Assets:					
Marketable securities					
Municipal bonds — available for sale	\$ 11,445,000	\$ 11,445,000	\$ —	\$ 11,445,000	\$ —
Deferred compensation fund					
Money Market	\$ 3,592,000	\$ 3,592,000	\$ —	\$ 3,592,000	\$ —
Balanced and Lifestyle	8,174,000	8,174,000	8,174,000	—	—
Large Cap Growth	4,292,000	4,292,000	4,292,000	—	—
Small Cap Value	2,173,000	2,173,000	2,173,000	—	—
Fixed Income	1,962,000	1,962,000	1,962,000	—	—
International	1,079,000	1,079,000	1,079,000	—	—
Mid Cap Growth	928,000	928,000	928,000	—	—
Deferred compensation fund	\$ 22,200,000	\$ 22,200,000	\$ 18,608,000	\$ 3,592,000	\$ —

The fair value of the municipal bonds is measured using third party pricing service data. The fair value of equity investments in the funded deferred compensation plan are valued (Level 1) based on quoted market prices. The money market fund in the funded deferred compensation plan is valued (Level 2) at the net asset value (“NAV”) of the shares held by the plan at the end of the period. As a practical expedient, the fair value of our money market fund is valued at the NAV as determined by the custodian of the fund. The money market fund includes short-term United States dollar denominated money-market instruments. The money market fund can be redeemed at its NAV at its measurement date as there are no significant restrictions on the ability of participants to sell this investment. These assets will be redeemed by the plan participants on an as needed basis.

Unrealized gains and losses from marketable securities are recorded in the other comprehensive income caption in our consolidated statements of comprehensive income.

	Amortized Cost	Gross Unrealized Gains	Gross Unrealized Losses	Estimated Fair Value	Other-than-temporary Impairments
December 31, 2014					
Type of security:					
Municipal bonds — available for sale	11,758,000	48,000	(7,000)	11,799,000	—
Total debt securities	\$ 11,758,000	\$ 48,000	\$ (7,000)	\$ 11,799,000	\$ —
December 31, 2013					
Type of security:					
Municipal bonds — available for sale	11,364,000	83,000	(2,000)	11,445,000	—
Total debt securities	\$ 11,364,000	\$ 83,000	\$ (2,000)	\$ 11,445,000	\$ —
December 31, 2012					
Type of security:					
Municipal bonds — available for sale	21,111,000	220,000	(9,000)	21,322,000	—
Total debt securities	\$ 21,111,000	\$ 220,000	\$ (9,000)	\$ 21,322,000	\$ —

For the years ended December 31, 2014, 2013 and 2012, we received total proceeds, less the amount of interest received, of \$3,905,000, \$14,985,000 and \$16,838,000, respectively, from sales of available for sale municipal bonds. These sales resulted in realized gains of \$12,000, \$49,000 and \$229,000 recorded in other income – investment and interest caption on our statement of comprehensive income for the years ended December 31, 2014, 2013 and 2012, respectively. The basis for the sale of these securities was a specific identification of each bond sold during this period.

The following tables include contractual maturities of debt securities held at December 31, 2014 and 2013, which are classified as marketable securities in the consolidated Balance Sheet.

Contractual maturity:	Municipal Bonds — Available for Sale	
	December 31, 2014	December 31, 2013
Maturing in one year or less	\$ 4,343,000	\$ 1,846,000
Maturing after one year through three years	4,041,000	7,113,000
Maturing after three years	3,415,000	2,486,000
Total debt securities	\$ 11,799,000	\$ 11,445,000

Note 6— Accounts and Notes Receivable

We expend considerable effort to collect the amounts due for our services on the terms agreed upon with our clients. Many of our clients participate in programs funded by federal and state governmental agencies which historically have encountered delays in making payments to its program participants. Congress has enacted a number of laws during the past decade that have significantly altered, or may alter, overall government reimbursement for nursing home services. Because our clients' revenues are generally dependent on Medicare and Medicaid reimbursement funding rates and mechanisms, the overall effect of these laws and trends in the long term care industry have affected and could adversely affect the liquidity of our clients, resulting in their inability to make payments to us on agreed upon payment terms. These factors, in addition to delays in payments from clients, have resulted in and could continue to result in significant additional bad debts in the near future. Whenever possible, when a client falls behind in making agreed-upon payments, we convert the unpaid accounts receivable to interest bearing promissory notes. The promissory notes receivable provide a means by which to further evidence the amounts owed and provide a definitive repayment plan and therefore may ultimately enhance our ability to collect the amounts due. Accounts and notes receivable are stated net of an allowance for doubtful accounts. At December 31, 2014 and 2013, we had \$16,945,000 and \$16,116,000, net of reserves, respectively, of such promissory notes outstanding. Additionally, we consider restructuring service agreements from full service to management-only service in the case of certain clients experiencing financial difficulties. We believe that such restructurings may provide us with a means to maintain a relationship with the client while at the same time minimizing collection exposure.

Note 7— Allowance for Doubtful Accounts

The allowance for doubtful accounts is established as losses are estimated to have occurred through a provision for bad debts charged to earnings and is included in the costs of services provided caption in our consolidated statements of comprehensive income. The allowance for doubtful accounts is evaluated based on our periodic review of accounts and notes receivable and is inherently subjective as it requires estimates that are susceptible to significant revision as more information becomes available.

State Medicaid programs are experiencing increased demand, and with lower revenues than projected, they have fewer resources to support their Medicaid programs. In addition, comprehensive health care legislation under the Act was signed into law in March 2010. The Act will significantly impact the governmental healthcare programs in which our clients participate, and reimbursements received thereunder from governmental or third-party payors. Furthermore, in the coming year and beyond, new proposals or additional changes in existing regulations could be made to the Act which could directly impact the governmental reimbursement programs in which our clients participate. As a result, some state Medicaid programs are reconsidering previously approved increases in nursing home reimbursement or are considering delaying or foregoing those increases. A few states have indicated it is possible they will run out of cash to pay Medicaid providers, including nursing homes. Any negative changes in our clients' reimbursements may negatively impact our results of operations. Although we are currently evaluating the Act's effect on our client base, we may not know the full effect until such time as these laws are fully implemented and the Centers for Medicare and Medicaid Services ("CMS") and other agencies issue applicable regulations or guidance.

In 2009 and 2010, Federal economic stimulus legislation was enacted to counter the impact of the economic crisis on state budgets. The legislation included the temporary provision of additional federal matching funds to help states maintain their Medicaid programs. This legislation to provide states with an extension of this fiscal relief was extended through June 2011, but at a reduced reimbursement rate. In July 2011, CMS issued a final rule that reduced Medicare payments to nursing centers by 11.1% and changed the reimbursement for the provision of group rehabilitation therapy services to Medicare beneficiaries. This new rule was effective as of October 1, 2011. Even if federal or state legislation is enacted that provides additional funding to Medicaid providers, given the volatility of the economic environment, it is difficult to predict the impact of this legislation on our clients' liquidity and their ability to make payments to us as agreed.

In January 2013, the U.S. Congress enacted the American Taxpayer Relief Act of 2012, which delayed automatic spending cuts, including reduced Medicare payments to plans and providers up to 2%. These discretionary spending caps were originally enacted under provisions in the Budget Control Act of 2011, an initiative to reduce the federal deficit through the year 2021, also known as “sequestration.” The sequestration went into effect starting March 2013. In December 2013, the U.S. Congress enacted the Bipartisan Budget Act of 2013, which reduces the impact of the sequestration over the next two years. This began in fiscal year 2014 and extended the reduction in Medicare payments to plans and providers for two years through the year 2023.

We have had varying collection experience with respect to our accounts and notes receivable. When contractual terms are not met, we generally encounter difficulty in collecting amounts due from certain of our clients. Therefore, we have sometimes been required to extend the period of payment for certain clients beyond contractual terms. These clients include those who have terminated service agreements and slow payers experiencing financial difficulties. In order to provide for these collection problems and the general risk associated with the granting of credit terms, we have recorded the following bad debt provisions (in an Allowance for Doubtful Accounts):

	Year Ended December 31,		
	2014	2013	2012
Bad debt provision	\$ 4,470,000	\$ 1,990,000	\$ 2,160,000

In making our credit evaluations, in addition to analyzing and anticipating, where possible, the specific cases described above, we consider the general collection risk associated with trends in the long-term care industry. We also establish credit limits, perform ongoing credit evaluation and monitor accounts to minimize the risk of loss. Notwithstanding our efforts to minimize credit risk exposure, our clients could be adversely affected if future industry trends change in such a manner as to negatively impact their cash flows. If our clients experience a negative impact in their cash flows, it would have a material adverse effect on our results of operations and financial condition.

Impaired Notes Receivable

We evaluate our notes receivable for impairment quarterly and on an individual client basis. Notes receivable considered impaired are generally attributable to clients that are either in bankruptcy, are subject to collection activity or those slow payers that are experiencing financial difficulties. In the event that our evaluation results in a determination that a note receivable is impaired, it is valued at the present value of expected cash flows or market value of related collateral. Summary schedules of impaired notes receivable, and the related reserve, for the years ended December 31, 2014, 2013 and 2012 are as follows:

Year ended December 31,	Impaired Notes Receivable				
	Balance Beginning of Year	Additions	Deductions	Balance End of Year	Average Outstanding Balance
2014	\$ 2,892,000	\$ 9,124,000	\$ 1,808,000	\$ 10,208,000	\$ 6,550,000
2013	\$ 1,639,000	\$ 1,267,000	\$ 14,000	\$ 2,892,000	\$ 2,266,000
2012	\$ 1,855,000	\$ —	\$ 216,000	\$ 1,639,000	\$ 1,747,000

Year ended December 31,	Reserve for Impaired Notes Receivable			
	Balance Beginning of Year	Additions	Deductions	Balance End of Year
2014	\$ 2,019,000	\$ 2,489,000	\$ 1,477,000	\$ 3,031,000
2013	\$ 958,000	\$ 1,072,000	\$ 11,000	\$ 2,019,000
2012	\$ 1,066,000	\$ 108,000	\$ 216,000	\$ 958,000

For impaired notes receivable, interest income is recognized on a cost recovery basis only. As a result, no interest income was recognized on impaired notes receivable. We follow an income recognition policy on all other notes receivable that does not recognize interest income until cash payments are received. This policy was established, recognizing the environment of the long-term care industry, and not because such notes receivable are necessarily impaired. The difference between income recognition on a full accrual basis and cash basis, for notes receivable that are not considered impaired, is not material.

Note 8 — Lease Commitments

We lease office facilities, equipment and autos under operating leases expiring on various dates through 2020. Certain office leases contain renewal options. The following is a schedule, by calendar year, of future minimum lease payments under operating leases that have remaining terms as of December 31, 2014.

Period/Year	Operating Leases
2015	\$ 879,000
2016	713,000
2017	659,000
2018	674,000
2019	690,000
Thereafter	3,807,000
Total minimum lease payments	<u>\$ 7,422,000</u>

Certain property leases provide for scheduled rent escalations. We do not consider the scheduled rent escalations to be material to our operating lease expenses individually or in the aggregate. Total expense for all operating leases was as follows:

	Year Ended December 31,		
	2014	2013	2012
Operating lease expense	\$ 1,210,000	\$ 1,239,000	\$ 1,451,000

Note 9— Share-Based Compensation

2012 Equity Incentive Plan

On May 29, 2012, the Company's shareholders adopted and approved the 2012 Equity Incentive Plan (the "2012 Plan"), under which current or prospective officers, employees, non-employee directors and advisors can receive share-based awards such as stock options, restricted stock and other stock awards. The 2012 Plan seeks to promote the highest level of performance by providing an economic interest in the long-term success of the Company. As of the date of shareholder adoption of the 2012 Plan, no further grants were permitted under any previously existing stock plans (the "Pre-existing Plans"). Additionally, all remaining shares available for future grants under the Pre-existing Plans became available for issuance under the 2012 Plan.

In addition to the 2012 Plan, the Company also had two compensation plans at December 31, 2014 which are described below: the Employee Stock Purchase Plan (the "ESPP") and the Supplemental Executive Retirement Plan (the "SERP").

The Nominating, Compensation and Stock Option Committee of the Board of Directors is responsible for determining the individuals who will be granted stock awards, the number of stock awards each individual will receive, the price per share (in accordance with the terms of our 2012 Plan), and the exercise period of each stock award.

A summary of stock-based compensation expense for the years ended December 31, 2014, 2013 and 2012 is as follows:

	December 31,		
	2014	2013	2012
Stock Options	\$ 2,596,000	\$ 2,017,000	\$ 1,897,000
Restricted Stock	109,000	28,000	—
Employee Stock Purchase Plan ("ESPP")	375,000	562,000	641,000
Total pre-tax stock-based compensation expense charged against income (1)	<u>\$ 3,080,000</u>	<u>\$ 2,607,000</u>	<u>\$ 2,538,000</u>

(1) Stock-based compensation expense is recorded in the selling, general and administrative caption in our consolidated statements of comprehensive income.

With respect to our SERP, we recorded expense of \$497,000, \$538,000 and \$560,000 (representing the Company's 25% match of participants' deferrals) for the years ended December 31, 2014, 2013 and 2012, respectively. Both the SERP match and deferrals are included in the selling, general and administrative caption in our consolidated statements of comprehensive income.

We have outstanding stock awards that were granted under the Pre-existing Plans to non-employee directors, officers and employees of the Company and other specified groups, depending on the Pre-existing Plan. As of December 31, 2014, 4,677,000 shares of common stock were reserved for issuance under our 2012 Plan, including 2,315,000 shares which are available for future grant. The stock price will not be less than the fair market value of the common stock on the date the award is granted. No stock award will have a term in excess of ten years. Since 2008, all awards granted under the Pre-existing Plans or the 2012 Plan become vested and exercisable ratably over a five year period on each yearly anniversary date of the stock grant.

A summary of our stock option activity under the 2012 Plan is as follows:

	2014		2013		2012	
	Weighted Average Exercise Price	Number of Shares	Weighted Average Exercise Price	Number of Shares	Weighted Average Exercise Price	Number of Shares
Beginning of period	\$ 16.05	2,483,000	\$ 13.18	2,632,000	\$ 10.97	2,912,000
Granted	28.02	535,000	23.50	564,000	17.50	601,000
Cancelled	21.95	(122,000)	18.18	(88,000)	14.53	(134,000)
Exercised	11.66	(534,000)	10.37	(625,000)	7.81	(747,000)
End of period	\$ 19.45	2,362,000	\$ 16.05	2,483,000	\$ 13.18	2,632,000

The weighted average grant-date fair value of stock options granted during 2014, 2013 and 2012 was \$8.24, \$6.81 and \$4.74 per common share, respectively.

During 2014 and 2013, the Company granted 14,000 and 6,000 shares, respectively, of restricted stock with weighted average grant date fair values of \$28.02 and \$23.50 per share, respectively. No shares of restricted stock were granted by the Company in 2012.

A summary of our non-vested stock-based compensation is as follows:

	2014		2013		2012	
	Weighted Average Grant Date Fair Value	Number of Non-vested Shares	Weighted Average Grant Date Fair Value	Number of Non-vested Shares	Weighted Average Grant Date Fair Value	Number of Non-vested Shares
Beginning of period	\$ 4.72	1,559,000	\$ 3.45	1,592,000	\$ 2.69	1,489,000
Granted	8.24	535,000	6.81	564,000	4.74	601,000
Vested	3.90	(517,000)	3.09	(518,000)	2.61	(423,000)
Forfeited	6.05	(112,000)	4.77	(79,000)	2.92	(75,000)
End of period	\$ 6.17	1,465,000	\$ 4.72	1,559,000	\$ 3.45	1,592,000

The following table summarizes other information about our outstanding stock options at December 31, 2014, 2013 and 2012.

Stock Options	2014	2013	2012
Range of exercise prices	\$10.39 - \$28.02	\$6.07 - 23.50	\$3.68 - 17.50
Outstanding:			
Weighted average remaining contractual life (years)	6.7	6.5	6.3
Aggregate intrinsic value	\$ 27,118,000	\$ 30,599,000	\$ 26,472,000
Exercisable:			
Number of shares	895,000	922,000	1,040,000
Weighted average remaining contractual life (years)	5.1	4.5	4.2
Aggregate intrinsic value	\$ 14,457,000	\$ 15,053,000	\$ 13,934,000
Exercised:			
Aggregate intrinsic value	\$ 9,303,000	\$ 9,139,000	\$ 10,465,000

Fair Value Estimates

The fair value of stock awards granted during 2014, 2013 and 2012 was estimated on the date of grant using the Black-Scholes option valuation model based on the following assumptions:

	2014	2013	2012
Risk-free interest rate	1.90%	1.50%	1.30%
Weighted average expected life in years	5.9 years	6.0 years	6.8 years
Expected volatility	36.9%	38.9%	39.2%
Dividend yield	2.40%	2.80%	3.60%
Forfeiture rate	3.00%	3.00%	2.90%

Other Information

Other information pertaining to activity of our stock awards during the years ended December 31, 2014, 2013 and 2012 was as follows:

	2014	2013	2012
Total grant-date fair value of stock awards granted	\$ 4,268,000	\$ 3,412,000	\$ 2,438,000
Total fair value of stock awards vested during period	\$ 2,051,000	\$ 1,897,000	\$ 1,409,000
Total unrecognized compensation expense related to non-vested stock awards	\$ 6,492,000	\$ 4,963,000	\$ 3,999,000

For the years ended December 31, 2014, 2013 and 2012, the unrecognized compensation cost related to stock awards granted but not yet vested, as reported above, was expected to be recognized over a weighted average remaining period of four years.

Employee Stock Purchase Plan

We have an Employee Stock Purchase Plan ("ESPP") for all eligible employees. All full-time and certain part-time employees who have completed two years of continuous service with us are eligible to participate. On April 12, 2011, the Board of Directors extended the ESPP for an additional five offerings through 2016. Annual offerings commence and terminate on the respective year's first and last calendar day.

Under the ESPP, we are authorized to issue up to 4,050,000 shares of our common stock to our employees. Pursuant to such authorization, we have 2,421,000 shares available for future grant at December 31, 2014. Furthermore, under the terms of the ESPP, eligible employees may contribute through payroll deductions up to \$21,250 (85% of IRS limitation) of their compensation toward the purchase of the Company's common stock. No employee may purchase common stock which exceeds \$25,000 in fair market value (determined on the date of grant) for each calendar year. The price per share is equal to the lower of 85% of the fair market price on the first day of the offering period, or 85% of the fair market price on the day of purchase.

The following table summarizes information about our ESPP annual offerings for the years ended December 31, 2014, 2013 and 2012:

	ESPP Annual Offering		
	2014	2013	2012
Common shares purchased	55,000	65,000	79,000
Per common share purchase price	\$ 24.11	\$ 19.75	\$ 15.04
Amount expensed under ESPP	\$ 375,000	\$ 562,000	\$ 641,000
Net proceeds from issuance	\$ 1,326,000	\$ 1,288,000	\$ 1,192,000
Common shares date of issue	Jan 7, 2015	Jan 3, 2014	Jan 4, 2013

Deferred Compensation Plan

We have a Supplemental Executive Retirement Plan (the “SERP”) for certain key executives and employees. The SERP is not qualified under Section 401 of the Internal Revenue Code. Effective in Plan year 2010, the Plan was amended to allow participants to defer up to 25% of their earned income on a pre-tax basis. As of the last day of each plan year, each participant will receive a 25% match of up to 15% of their deferral in the form of our Common Stock based on the then current market value. SERP participants fully vest in our matching contribution three years from the first day of the initial year of participation. The income deferred and our matching contributions are unsecured and subject to the claims of our general creditors.

Under the SERP, we are authorized to issue up to 1,013,000 shares of our common stock to our employees. Pursuant to such authorization, we have 436,000 shares available for future grant at December 31, 2014 (after deducting the 2014 funding of 16,000 shares delivered in 2015). In the aggregate, since initiation of the SERP, the Company’s 25% match has resulted in 576,000 shares (including the 2014 funding of shares delivered in 2015) being issued to the trustee. At the time of issuance, such shares were accounted for at cost, as treasury stock. At December 31, 2014, approximately 331,000 of such shares are vested and remain in the respective active participants’ accounts.

The following table summarizes information about our SERP for the plan years ended December 31, 2014, 2013 and 2012:

	SERP Plan Year		
	2014	2013	2012
Amount of company match expensed under SERP	\$ 497,000	\$ 538,000	\$ 560,000
Treasury shares issued to fund SERP expense	16,000	19,000	24,000
SERP trust account balance at December 31	\$ 35,310,000 ⁽¹⁾	\$ 31,415,000 ⁽¹⁾	\$ 24,997,000 ⁽¹⁾
Unrealized gain (loss) recorded in SERP liability account	\$ 1,211,000	\$ 3,005,000	\$ 1,718,000

(1) SERP trust account investments are recorded at their fair value which is based on quoted market prices. Differences between such amounts in the table above and the deferred compensation funding asset reported on our Consolidated Balance Sheets represent the value of our Common Stock held in the Plan’s participants’ trust account and reported by us as treasury stock in our Consolidated Balance Sheets.

Note 10— Other Employee Benefit Plans

Retirement Savings Plan

Since October 1, 1999, we have had a retirement savings plan for employees (the “RSP”) under Section 401(k) of the Internal Revenue Code. The RSP allows eligible employees to contribute up to fifteen percent (15)% of their eligible compensation on a pre-tax basis. There is no match by the Company.

Note 11— Dividends

We have paid regular quarterly cash dividends since the second quarter of 2003. During 2014, we paid regular quarterly cash dividends totaling \$49,077,000 as detailed below:

	Quarter Ended			
	March 31, 2014	June 30, 2014	September 30, 2014	December 31, 2014
Cash dividend per common share	\$ 0.17125	\$ 0.17250	\$ 0.17375	\$ 0.17500
Total cash dividends paid	\$ 12,077,000	\$ 12,186,000	\$ 12,335,000	\$ 12,479,000
Record date	February 21, 2014	May 23, 2014	August 22, 2014	November 21, 2014
Payment date	March 28, 2014	June 27, 2014	September 26, 2014	December 26, 2014

Additionally, on January 27, 2015, our Board of Directors declared a regular quarterly cash dividend of \$0.17625 per common share, which will be paid on March 27, 2015 to shareholders of record as of the close of business on February 20, 2015.

Cash dividends on our outstanding weighted average number of basic common shares for the years ended December 31, 2014, 2013 and 2012 was as follows:

	December 31,		
	2014	2013	2012
Cash dividends per common share	\$ 0.69	\$ 0.67	\$ 0.65

Our Board of Directors reviews our dividend policy on a quarterly basis. Although there can be no assurance that we will continue to pay dividends or the amount of the dividend, we expect to continue to pay a regular quarterly cash dividend. In connection with the establishment of our dividend policy, we adopted a Dividend Reinvestment Plan in 2003.

Note 12— Income Taxes

The following table summarizes the provision for income taxes:

	Year Ended December 31,		
	2014	2013	2012
Current:			
Federal	\$ 21,030,000	\$ 19,045,000	\$ 24,350,000
State	4,095,000	5,381,000	5,373,000
	<u>25,125,000</u>	<u>24,426,000</u>	<u>29,723,000</u>
Deferred:			
Federal	(12,708,000)	(4,172,000)	(3,048,000)
State	(2,559,000)	(894,000)	(625,000)
	<u>(15,267,000)</u>	<u>(5,066,000)</u>	<u>(3,673,000)</u>
Tax Provision	<u>\$ 9,858,000</u>	<u>\$ 19,360,000</u>	<u>\$ 26,050,000</u>

Deferred income taxes are recorded using the asset and liability method. Deferred tax assets and liabilities are determined based on differences between the financial reporting and income tax basis of assets and liabilities.

Significant components of our federal and state deferred tax assets and liabilities are as follows:

	Years Ended December 31,	
	2014	2013
Net current deferred assets (liabilities):		
Allowance for doubtful accounts	\$ 2,427,000	\$ 1,560,000
Accrued insurance claims — current	5,974,000	3,574,000
Expensing of housekeeping supplies	(6,622,000)	(5,059,000)
Other	1,676,000	2,264,000
	<u>\$ 3,455,000</u>	<u>\$ 2,339,000</u>
Net noncurrent deferred assets (liabilities):		
Deferred compensation	\$ 8,681,000	\$ 7,987,000
Non-deductible reserves	5,000	5,000
Depreciation of property and equipment	(3,160,000)	(2,933,000)
Accrued insurance claims — noncurrent	19,982,000	6,848,000
Amortization of intangibles	1,229,000	1,015,000
Other	496,000	352,000
	<u>\$ 27,233,000</u>	<u>\$ 13,274,000</u>

Realization of the Company's deferred tax assets is dependent upon future earnings in specific tax jurisdictions, the timing and amount of which are uncertain. Management assesses the Company's income tax positions and records tax benefits for all years subject to examination based upon an evaluation of the facts, circumstances, and information available at the reporting dates, which include historical operating results and expectations of future earnings. As such, management believes it is more likely than not that the current and noncurrent deferred tax assets recorded will be realized to reduce future income taxes and therefore no valuation allowances are necessary.

A reconciliation of the provision for income taxes and the amount computed by applying the statutory federal income tax rate to income before income taxes is as follows:

	Year Ended December 31,		
	2014	2013	2012
Tax expense computed at statutory rate	\$ 11,098,000	\$ 23,271,000	\$ 24,592,000
Increases (decreases) resulting from:			
State income taxes, net of federal tax benefit	998,000	2,916,000	3,086,000
Federal jobs credits	(2,925,000)	(7,121,000)	(1,110,000)
Tax exempt interest	(13,000)	(29,000)	(99,000)
Other, net	700,000	323,000	(419,000)
	<u>\$ 9,858,000</u>	<u>\$ 19,360,000</u>	<u>\$ 26,050,000</u>

Management performs an evaluation each period of its tax positions taken and expected to be taken in tax returns. The evaluation is performed on positions relating to tax years that remain subject to examination by major tax jurisdictions, the earliest of which is tax year ended December 31, 2010. Based on our evaluation, management has concluded that there are no significant uncertain tax positions requiring recognition in our financial statements. Therefore, the table reporting on the change in the liability for unrecognized tax benefits during the year ended December 31, 2014 is omitted as there is no activity to report in such account for the year ended December 31, 2014, and there was no balance of unrecognized tax benefits at the beginning of the year.

We may from time to time be assessed interest or penalties by major tax jurisdictions, although any such assessments historically have been minimal and immaterial to our financial results. In the event we have received an assessment for interest and/or penalties, it has been classified in the financial statements as selling, general and administrative expense.

Note 13—Related Party Transactions

A director is a member of a law firm which was retained by us. During the years ended December 31, 2014, 2013 and 2012, fees received from us by such firm did not exceed \$120,000 in any period. Additionally, such fees did not exceed, in any period, 5% of such firm's revenues or the Company's revenues.

Note 14—Segment Information

Reportable Operating Segments

U.S. GAAP establishes standards for reporting information regarding operating segments in annual financial statements. Operating segments are identified as components of an enterprise for which separate discrete financial information is available for evaluation by the chief operating decision-maker, or decision-making group in making decisions on how to allocate resources and assess performance.

We manage and evaluate our operations in two reportable segments: Housekeeping (housekeeping, laundry, linen and other services), and Dietary (dietary department services). Although both segments serve the same client base and share many operational similarities, they are managed separately due to distinct differences in the type of service provided, as well as the specialized expertise required of the professional management personnel responsible for delivering the respective segment's services. We consider the various services provided within each reportable segment to comprise an identifiable reportable operating segment since such services are rendered pursuant to a single service agreement, specific to that reportable segment, as well as the fact that the delivery of the respective reportable segment's services are managed by the same management personnel of the particular reportable segment.

The Company's accounting policies for the segments are generally the same as the Company's significant accounting policies. Differences between the reportable segments' operating results and other disclosed data and our consolidated financial statements relate primarily to corporate level transactions and recording of transactions at the reportable segment level which use methods other than generally accepted accounting principles. There are certain inventories and supplies that are primarily expensed when incurred within the operating segments, while they are capitalized for the consolidated financial statements. As discussed, most corporate expense is not allocated to the operating segments, and such expenses include corporate salary and benefit costs, certain legal costs, information technology costs, depreciation, amortization of finite lived intangibles, share based compensation costs and other corporate specific costs. Additionally, there are allocations for workers compensation and general liability expense within the operating segments that differ from our actual expense recorded for U.S. GAAP. Additionally, included in the differences between the reportable segments' operating results and other disclosed data are amounts attributable to Huntingdon Holdings Inc. ("Huntingdon"), our investment holding company subsidiary. Huntingdon does not transact any business with the reportable segments. Segment amounts disclosed are prior to any elimination entries made in consolidation.

Housekeeping provides services in Canada, although essentially all of its revenues and net income, 99% in both categories, are earned in one geographic area, the United States. Dietary provides services solely in the United States.

	Housekeeping Services	Dietary Services	Corporate and Eliminations	Total
Year Ended December 31, 2014				
Revenues	\$ 846,610,000	\$ 446,573,000	\$ —	\$ 1,293,183,000
Income before income taxes	70,390,000	26,343,000	(65,025,000) ⁽¹⁾	31,708,000
Depreciation and amortization	6,114,000	662,000	493,000	7,269,000
Total assets	223,440,000	95,861,000	150,278,000 ⁽²⁾	469,579,000
Capital expenditures	\$ 4,375,000	\$ 391,000	\$ 1,029,000	\$ 5,795,000
Year Ended December 31, 2013				
Revenues	\$ 759,093,000	\$ 390,797,000	\$ —	\$ 1,149,890,000
Income before income taxes	68,872,000	21,244,000	(23,627,000) ⁽¹⁾	66,489,000
Depreciation and amortization	5,105,000	693,000	406,000	6,204,000
Total assets	213,397,000	92,424,000	119,521,000 ⁽²⁾	425,342,000
Capital expenditures	\$ 2,726,000	\$ 460,000	\$ 576,000	\$ 3,762,000
Year Ended December 31, 2012				
Revenues	\$ 737,407,000	\$ 339,855,000	\$ 173,000 ⁽¹⁾	\$ 1,077,435,000
Income before income taxes	69,429,000	18,474,000	(17,639,000) ⁽¹⁾	70,264,000
Depreciation and amortization	4,069,000	676,000	371,000	5,116,000
Total assets	144,412,000	62,263,000	124,508,000 ⁽²⁾	331,183,000
Capital expenditures	\$ 2,765,000	\$ 453,000	\$ 266,000	\$ 3,484,000

(1) Represents primarily corporate office cost and related overhead, recording of transactions at the reportable segment level which use methods other than generally accepted accounting principles, as well as consolidated subsidiaries' operating expenses that are not allocated to the reportable segments, net of investment and interest income. Additionally, during 2014, the Company recorded a one-time, non-cash change in estimate related to our self-insurance liability which was not allocated to the reportable segments.

(2) Represents primarily cash and cash equivalents, marketable securities, deferred income taxes and other current and noncurrent assets.

Total Revenues from Clients

The following revenues earned from clients differ from segment revenues reported above due to the inclusion of adjustments used for segment reporting purposes by management. We earned total revenues from clients in the following service categories:

	Year Ended December 31,		
	2014	2013	2012
Housekeeping services	\$ 589,820,000	\$ 514,180,000	\$ 492,319,000
Laundry and linen services	254,777,000	241,540,000	240,670,000
Dietary services	446,573,000	390,797,000	339,867,000
Maintenance services and other	2,013,000	3,373,000	4,579,000
	<u>\$ 1,293,183,000</u>	<u>\$ 1,149,890,000</u>	<u>\$ 1,077,435,000</u>

Note 15— Earnings Per Common Share

Basic net earnings per share are computed using the weighted-average number of common shares outstanding. The dilutive effect of potential common shares outstanding is included in diluted net earnings per share. The computations of basic net earnings per share and diluted net earnings per share for 2014, 2013 and 2012 are as follows:

	Year ended December 31, 2014		
	Income (Numerator)	Shares (Denominator)	Per-share Amount
Net income	\$ 21,850,000		
Basic earnings per common share	\$ 21,850,000	70,616,000	\$ 0.31
Effect of dilutive securities:			
Stock options and restricted stock		725,000	—
Diluted earnings per common share	\$ 21,850,000	71,341,000	\$ 0.31
	Year ended December 31, 2013		
	Income (Numerator)	Shares (Denominator)	Per-share Amount
Net income	\$ 47,129,000		
Basic earnings per common share	\$ 47,129,000	69,206,000	\$ 0.68
Effect of dilutive securities:			
Stock options and restricted stock		839,000	(0.01)
Diluted earnings per common share	\$ 47,129,000	70,045,000	\$ 0.67
	Year ended December 31, 2012		
	Income (Numerator)	Shares (Denominator)	Per-share Amount
Net income	\$ 44,214,000		
Basic earnings per common share	\$ 44,214,000	67,511,000	\$ 0.65
Effect of dilutive securities:			
Stock options and restricted stock		974,000	—
Diluted earnings per common share	\$ 44,214,000	68,485,000	\$ 0.65

For the years ended December 31, 2014, 2013 and 2012, options to purchase 494,000, 546,000 and 576,000 shares, respectively, were excluded from the computation of diluted earnings per common share as the exercise price of such options were in excess of the average market value of our common stock at the respective year end.

Note 16—Other Contingencies

We have a \$125,000,000 bank line of credit on which we may draw to meet short-term liquidity requirements in excess of internally generated cash flow. Amounts drawn under the line of credit are payable upon demand. At December 31, 2014, there were no borrowings under the line of credit. However, at such date, we had outstanding a \$51,520,000 (increased to \$71,415,000 on January 1, 2015) irrevocable standby letter of credit which relates to payment obligations under our insurance programs. As a result of the letter of credit issued, the amount available under the line of credit was reduced by \$51,520,000 at December 31, 2014. The line of credit requires us to satisfy one financial covenant. We are in compliance with our financial covenant at December 31, 2014 and expect to continue to remain in compliance with such financial covenant. This line of credit expires on December 18, 2018. We believe the line of credit will be renewed at that time.

On December 29, 2014, we entered into a Security Interest, Pledge and Assignment of Deposit Account (the "Pledge") with Wells Fargo Bank, National Association (the "Bank") as collateral for the Promissory Note (the "Note") dated December 29, 2014 between the Company's third party payroll administrator and the Bank. The Company entered into the Pledge at year end due to the timing of payroll funding and the holidays. On January 2, 2015, the Company's third party payroll administrator satisfied its payment obligation under the Note, and accordingly, the Company's Pledge was terminated. As of December 31, 2014, the cash associated with the Pledge was held in the Company's operating cash account, and used to fund the Company's operations and general operating expenses. The Company concluded that the commitment was immaterial to our statement financial position as it represented less than 6% and 5%, respectively, of current assets and total assets as of December 31, 2014. Additionally, the commitment had no material impact on the Company's consolidated results of operations for the year ended December 31, 2014.

We provide our services in 48 states and are subject to numerous local taxing jurisdictions within those states. Consequently, in the ordinary course of business, a jurisdiction may contest our reporting positions with respect to the application of its tax code to our services. A jurisdiction's conflicting position on the taxability of our services could result in additional tax liabilities.

We have tax matters with various taxing authorities. Because of the uncertainties related to both the probable outcome and amount of probable assessment due, we are unable to make a reasonable estimate of a liability. We do not expect the resolution of any of these matters, taken individually or in the aggregate, to have a material adverse effect on our consolidated financial position or results of operations based on our best estimate of the outcomes of such matters.

We are also subject to various claims and legal actions in the ordinary course of business. Some of these matters include payroll and employee-related matters and examinations by governmental agencies. As we become aware of such claims and legal actions, we provide accruals if the exposures are probable and estimable. If an adverse outcome of such claims and legal actions is reasonably possible, we assess materiality and provide such financial disclosure, as appropriate.

State Medicaid programs are experiencing increased demand, and with lower revenues than projected, they have fewer resources to support their Medicaid programs. In addition, comprehensive health care legislation under the Patient Protection and Affordable Care Act and the Health Care and Education Reconciliation Act of 2010 (together, the "Act") was signed into law in March 2010. The Act will significantly impact the governmental healthcare programs which our clients participate, and reimbursements received thereunder from governmental or third-party payors. In July 2011, Centers for Medicare and Medicaid Services ("CMS") issued a final rule that reduced Medicare payments to nursing centers by 11.1% and changed the reimbursement for the provision of group rehabilitation therapy services to Medicare beneficiaries. This rule was effective as of October 1, 2011. Furthermore, in the coming year, new proposals or additional changes in existing regulations could be made to the Act and/or CMS could propose additional reimbursement reductions which could directly impact the governmental reimbursement programs in which our clients participate. As a result, some state Medicaid programs are reconsidering previously approved increases in nursing home reimbursement or are considering delaying or foregoing those increases. A few states have indicated it is possible they will run out of cash to pay Medicaid providers, including nursing homes. In addition, certain state governors have recently stated that they will reject Federal Medicaid assistance under the Act. Any negative changes in our clients' reimbursements may negatively impact our results of operations. Although we are currently evaluating the Act's effect on our client base, we may not know the full effect until such time as these laws are fully implemented and CMS and other agencies issue applicable regulations or guidance.

In January 2013, the U.S. Congress enacted the American Taxpayer Relief Act of 2012, which delayed automatic spending cuts, including reduced Medicare payments to plans and providers up to 2%. These discretionary spending caps were originally enacted under provisions in the Budget Control Act of 2011, an initiative to reduce the federal deficit through the year 2021, also known as "sequestration." The sequestration went into effect starting March 2013. In December 2013, the U.S. Congress enacted the Bipartisan Budget Act of 2013, which reduces the impact of the sequestration over the next two years. This began in fiscal year 2014 and extended the reduction in Medicare payments to plans and providers for two years through the year 2023.

Note 17—Accrued Insurance Claims

We currently have a Paid Loss Retrospective Insurance Plan for general liability and workers' compensation insurance, which comprise approximately 35% of our liabilities at December 31, 2014. Under our insurance plans for general liability and workers' compensation, predetermined loss limits are arranged with our insurance company to limit both our per occurrence cash outlay and annual insurance plan cost. Our accounting for this plan is affected by various uncertainties, such as historical claims, pay-out experience, demographic factors, industry trends, severity factors, and other actuarial assumption calculated by a third party actuary. Evaluations of our accrued insurance claims estimate as of the balance sheet date are based primarily on current information derived from our actuarial valuation which assist in quantifying and valuing these trends. In the event that our claims experience and/or industry trends result in an unfavorable change resulting from, among other factors, the severity levels of reported claims and medical cost inflation, as compared to historical claim trends, it would have an adverse effect on our results of operations and financial condition. Under these plans, predetermined loss limits are arranged with an insurance company to limit both our per-occurrence cash outlay and annual insurance plan cost.

For workers' compensation and general liability, we record a reserve for the estimated future cost of claims and related expenses that have been reported but not settled, including an estimate of claims incurred but not reported that are developed as a result of a review of our historical data and open claims, which is based on estimated provided by a third party actuary.

Note 18—Subsequent Events

We evaluated all subsequent events through the date these financial statements are being filed with the SEC. There were no events or transactions occurring during this subsequent reporting period which require recognition or additional disclosure in these financial statements.

Note 19—Selected Quarterly Financial Data (Unaudited)

The following tables summarize the unaudited quarterly financial data for the last two fiscal years.

	First Quarter	Second Quarter	Third Quarter	Fourth Quarter
2014				
Revenues	\$ 312,165,000	\$ 319,295,000	\$ 320,099,000	\$ 341,624,000
Operating costs and expenses	\$ 289,417,000	\$ 298,055,000	\$ 355,132,000	\$ 320,499,000
Income before income taxes	\$ 23,129,000	\$ 22,043,000	\$ (35,083,000)	\$ 21,619,000
Net income	\$ 14,639,000	\$ 13,921,000	\$ (22,182,000)	\$ 15,472,000
Basic earnings per common share ⁽¹⁾	\$ 0.21	\$ 0.20	\$ (0.31)	\$ 0.22
Diluted earnings per common share ⁽¹⁾	\$ 0.21	\$ 0.20	\$ (0.31)	\$ 0.22
Cash dividends per common share ⁽¹⁾	\$ 0.17	\$ 0.17	\$ 0.17	\$ 0.18
2013				
Revenues	\$ 273,904,000	\$ 273,604,000	\$ 298,549,000	\$ 303,833,000
Operating costs and expenses	\$ 255,981,000	\$ 253,965,000	\$ 278,540,000	\$ 298,616,000
Income before income taxes	\$ 18,957,000	\$ 19,858,000	\$ 21,193,000	\$ 6,481,000
Net income	\$ 14,954,000	\$ 12,933,000	\$ 13,790,000	\$ 5,452,000
Basic earnings per common share ⁽¹⁾	\$ 0.22	\$ 0.19	\$ 0.20	\$ 0.08
Diluted earnings per common share ⁽¹⁾	\$ 0.22	\$ 0.19	\$ 0.20	\$ 0.08
Cash dividends per common share ⁽¹⁾	\$ 0.17	\$ 0.17	\$ 0.17	\$ 0.17

(1) Year-to-date earnings and cash dividends per common share amounts may differ from the sum of quarterly amounts due to rounding.

Item 9. Changes in and Disagreements with Accountants on Accounting and Financial Disclosure.

None.

Item 9A. Controls and Procedures.

Evaluation of Disclosure Controls and Procedures

In accordance with Exchange Act Rules 13a-15 and 15a-15, we carried out an evaluation, under the supervision and with the participation of management, including our Chief Executive Officer and Chief Financial Officer, of the effectiveness of our disclosure controls and procedures as of the end of the period covered by this report. Based on that evaluation, our Chief Executive Officer and Chief Financial Officer concluded that our disclosure controls and procedures were effective as of December 31, 2014.

Design and Evaluation of Internal Control Over Financial Reporting

Pursuant to Section 404 of the Sarbanes-Oxley Act of 2002, we included a report of management's assessment of the design and effectiveness of our internal controls over financial reporting as part of this Annual Report on Form 10-K for the fiscal year ended December 31, 2014. Grant Thornton, LLP, our independent registered public accounting firm, also audited our internal control over financial reporting. Management's report and the independent registered public accounting firm's audit report are included in this Annual Report on Form 10-K within Part II, Item 8 under the captions entitled "Management's Report on Internal Control Over Financial Reporting" and "Report of Independent Registered Public Accounting Firm".

Changes in Internal Control over Financial Reporting

There were no changes in our internal control over financial reporting that occurred during the period covered by this Annual Report on Form 10-K that have materially affected, or are reasonably likely to materially affect, our internal control over financial reporting.

Item 9B. Other Information.

On February 17, 2015, the Board of Directors adopted amendments to the Company's bylaws, in the form of the Company's Second Amended and Restated Bylaws (the "Bylaws"), effective on that date. A copy of the Bylaws is filed as Exhibit 3.3 to this Annual Report on Form 10-K and incorporated by reference herein.

The following is a summary of the material amendments to the Bylaws:

- Article III has been amended to replace Section 7 and 8 with a new Section 7 to clarify the proper form and procedures for shareholder requests to (a) propose business to be brought before a special meeting, (b) have the Board call a special meeting or (c) have the Board fix a record date, and to replace Sections 11 and 12 with a new Section 10 regarding the procedures for shareholder proposals and nominations.
- Section 1 of Article IV has been amended to increase the minimum number of directors from three to six and increase the maximum number of directors from nine to twelve.
- Article XI has been amended primarily to reflect certain changes to the Business Corporation Law of the Commonwealth of Pennsylvania with respect to indemnification.

PART III

Item 10. Directors, Executive Officers and Corporate Governance.

The information regarding directors and executive officers is incorporated herein by reference to the Company's definitive proxy statement to be mailed to its shareholders in connection with its 2015 Annual Meeting of Shareholders and to be filed within 120 days of the close of the year ended December 31, 2014.

Code of Ethics

We have adopted a code of ethics that applies to all employees, including executive officers and directors. The code of ethics is publicly available on the Corporate Governance page of our website at www.hcsg.com. If we make any amendments or grant any waivers, including implicit waivers, from a provision of our code of ethics that applies to our principal executive officer, principal financial officer, principal accounting officer or any person performing similar functions, we will disclose the nature of the amendment or waiver, its effective date and to whom it applies on our website set forth above or in a report on Form 8-K filed with the Securities and Exchange Commission.

Item 11. Executive Compensation.

The information regarding executive compensation is incorporated herein by reference to the Company's definitive proxy statement to be mailed to shareholders in connection with its 2015 Annual Meeting of Shareholders and to be filed within 120 days of the close of the fiscal year ended December 31, 2014.

Item 12. Security Ownership of Certain Beneficial Owners and Management and Related Stockholder Matters.

The information regarding security ownership of certain beneficial owners and management and related stockholder matters is incorporated herein by reference to the Company's definitive proxy statement to be mailed to shareholders in connection with its 2015 Annual Meeting of Shareholders and to be filed within 120 days of the close of the fiscal year ending December 31, 2014.

Securities Authorized for Issuance Under Equity Compensation Plans

The following table sets forth for the Company's equity compensation plans, on an aggregated basis, the number of shares of its Common Stock subject to outstanding stock awards, the weighted-average exercise price of stock awards, and the number of shares remaining available for future award grants as of December 31, 2014.

Plan Category	Number of Securities to be Issued Upon Exercise of Outstanding Options, Warrants and Rights (a)	Weighted-Average Exercise Price of Outstanding Options, Warrants and Rights (b)	Number of Securities Remaining Available for Future Issuance Under Equity Compensation Plans (Excluding Securities Reflected in Column (a)) (c)
Equity compensation plans approved by security holders	2,362,000 ⁽¹⁾	\$ 19.45	5,172,000 ⁽²⁾
Equity compensation plans not approved by security holders	—	—	—
Total	2,362,000	\$ 19.45	5,172,000

(1) Represents shares of Common Stock issuable upon exercise of outstanding stock awards granted under the 2012 Equity Incentive Plan and carryover shares from Pre-existing Plans.

(2) Includes stock awards to purchase 2,315,000 shares available for future grant under the Company's 2012 Equity Incentive Plan and carryover shares from Pre-existing Plans. Also includes 2,421,000 and 436,000 shares available for issuance under the Company's 1999 Employee Stock Purchase Plan as amended and 1999 Deferred Compensation Plan, respectively (collectively, the "1999 Plans"). Treasury shares may be issued under the 1999 Plans.

Unregistered Sales of Equity Securities and Use of Proceeds

On November 13, 2014, the Company issued 176,000 shares of contingent consideration to the selling stockholders of Platinum Health Services, LLC. The issuance of such shares were completed in accordance with the exemption provided by Section 4(2) of the Securities Act of 1933, as amended.

Item 13. Certain Relationships and Related Transactions, and Director Independence.

The information regarding certain relationships and related transactions, and director independence is incorporated herein by reference to the Company's definitive proxy statement mailed to shareholders in connection with its 2015 Annual Meeting of Shareholders and to be filed within 120 days of the close of the fiscal year ended December 31, 2014.

Item 14. Principal Accountant Fees and Services.

The information regarding principal accountant fees and services is incorporated herein by reference to the Company's definitive proxy statement mailed to shareholders in connection with its 2015 Annual Meeting of Shareholders and to be filed within 120 days of the close of the fiscal year ended December 31, 2014.

PART IV

Item 15. Exhibits and Financial Statement Schedules.

(a) The following financial statements, schedules and exhibits are filed as part of this report:

1. *Index to Consolidated Financial Statements* — The Financial Statements required by this item are listed on the Index to Financial Statements in Part II, Item 8 of this report.
2. *Index to Financial Statement Schedules* —
 - a. Schedule II—Valuation and Qualifying Accounts and Reserves; and
 - b. Other financial statement schedules are not included because they are not required or the information is otherwise shown in the financial statements or notes thereto.
3. *Index to Exhibits* —
 - a. The exhibits listed below are filed as part of, or are incorporated by reference into, this report.

(b) See Item 15(a)(3) above.

(c) See Item 15(a)(2) above.

Healthcare Services Group, Inc. Schedule II — Valuation and Qualifying Accounts and Reserves

Description	Beginning Balance	Additions		Deductions (A)	Ending Balance
		Charged to Costs and Expenses	Charged to Other Accounts		
2014					
Allowance for Doubtful Accounts	\$ 3,919,000	\$ 4,470,000	\$ —	\$ 2,253,000	\$ 6,136,000
2013					
Allowance for Doubtful Accounts	\$ 3,970,000	\$ 1,990,000	\$ —	\$ 2,041,000	\$ 3,919,000
2012					
Allowance for Doubtful Accounts	\$ 4,506,000	\$ 2,160,000	\$ —	\$ 2,696,000	\$ 3,970,000

(A) Represents write-offs

Exhibit Index

The following Exhibits are filed as part of this Report (references are to Reg. S-K Exhibit Numbers):

Exhibit Number	Description	Incorporated by Reference				Filed Herewith
		Form	File No.	Date of Filing	Exhibit Number	
2.1	Asset Purchase Agreement, dated July 11, 2013, among Healthcare Services Group, Inc., Platinum Health Services, LLC, Platinum Health Services PEO, LLC, Joseph Foy, Platinum SG Equities LLC, Walnut Court Capital Advisors, LLC, Z Capital LLC, Simon Ganz and Seth E. Gribetz	8-K	0-12015	7/16/2013	2.1	—
3.1	Amended and Restated Articles of Incorporation of the Registrant as of May 30, 2000	10-K	0-12015	3/21/2001	3.2	—
3.2	Amendment to the Amended and Restated Articles of Incorporation of the Registrant as of May 22, 2007	8-K	0-12015	5/24/2007	3.1	—
3.3	Second Amended and Restated Bylaws of the Registrant as of February 17, 2015	—	—	—	—	X
4.1	Specimen Certificate of the Common Stock, \$.01 par value, of the Registrant	S-18	2-87625-W	—	4.1	—
4.2†	Healthcare Services Group, Inc. Employee Stock Purchase Plan	S-8	333-92835	12/15/1999	4(a)	—
4.3†	Healthcare Services Group, Inc. Amendment to Employee Stock Purchase Plan	S-8	333-107467	7/30/2003	—	—
4.4†	Healthcare Services Group, Inc. Deferred Compensation Plan	S-8	333-92835	12/15/1999	4(b)	—
4.5†	Healthcare Services Group, Inc. Amended and Restated Deferred Compensation Plan	10-Q	0-12015	10/22/2012	10.1	—
10.1†	Healthcare Services Group, Inc. 2012 Equity Incentive Plan	10-Q	0-12015	7/27/2012	10.1	—
10.2	Healthcare Services Group, Inc. Dividend Reinvestment Plan	S-3D	333-108182	8/22/2003	—	—
10.3	Amended and Restated Loan Agreement dated as of December 18, 2013	8-K	0-12015	12/19/2013	99.2	—
10.4	Amended and Restated Committed Line of Credit Note dated as of December 18, 2013	8-K	0-12015	12/19/2013	99.3	—
21	Subsidiaries of Healthcare Services Group, Inc.	—	—	—	—	X
23	Consent of Independent Registered Public Accounting Firm	—	—	—	—	X
31.1	Certification of Principal Executive Officer pursuant to Section 302 of the Sarbanes-Oxley Act	—	—	—	—	X
31.2	Certification of Principal Financial Officer pursuant to Section 302 of the Sarbanes-Oxley Act	—	—	—	—	X
32.1	Certification of the Principal Executive Officer pursuant to Section 906 of the Sarbanes-Oxley Act	—	—	—	—	X
32.2	Certification of the Principal Financial Officer pursuant to Section 906 of the Sarbanes-Oxley Act	—	—	—	—	X
101	The following financial information from the Company's Form 10-K for the fiscal year ended December 31, 2014 formatted in eXtensible Business Reporting Language (XBRL): (i) Consolidated Balance Sheets, (ii) Consolidated Statements of Comprehensive Income, (iii) Consolidated Statements of Cash Flows, (iv) Consolidated Statements of Stockholders' Equity, and (v) Notes to Consolidated Financial Statements	—	—	—	—	X

† Indicates a management plan or compensatory plan or arrangement.

Signatures

Pursuant to the requirements of Section 13 or 15(d) of the Securities and Exchange Act of 1934, the Registrant has duly caused this report to be signed on its behalf by the undersigned, thereunto duly authorized.

Dated: February 19, 2015

HEALTHCARE SERVICES GROUP, INC.
(Registrant)

By: /s/ Daniel P. McCartney

Daniel P. McCartney

Chief Executive Officer and Chairman of the Board

Pursuant to the requirements of the Securities and Exchange Act of 1934, this report has been signed below by the following persons and in the capacities and on the date indicated:

<u>Signature</u>	<u>Title</u>	<u>Date</u>
<u>/s/ Daniel P. McCartney</u> Daniel P. McCartney	Chief Executive Officer and Chairman (Principal Executive Officer)	February 19, 2015
<u>/s/ John C. Shea</u> John C. Shea	Chief Financial Officer (Principal Financial and Accounting Officer)	February 19, 2015
<u>/s/ Theodore Wahl</u> Theodore Wahl	Director and President and Chief Operating Officer	February 19, 2015
<u>/s/ Michael E. McBryan</u> Michael E. McBryan	Director and Executive Vice President	February 19, 2015
<u>/s/ Robert L. Frome</u> Robert L. Frome	Director	February 19, 2015
<u>/s/ Diane S. Casey</u> Diane S. Casey	Director	February 19, 2015
<u>/s/ John M. Briggs</u> John M. Briggs	Director	February 19, 2015
<u>/s/ Robert J. Moss</u> Robert J. Moss	Director	February 19, 2015
<u>/s/ Dino D. Ottaviano</u> Dino D. Ottaviano	Director	February 19, 2015
<u>/s/ John J. McFadden</u> John J. McFadden	Director	February 19, 2015

**SUBSIDIARIES OF HEALTHCARE SERVICES GROUP, INC.
AS OF DECEMBER 31, 2014**

Entity Name	Year Formed	Jurisdiction	Description
Huntingdon Holdings Inc. ("Huntingdon")	1998	Delaware	Huntingdon invests our cash and cash equivalents and manages our portfolio of available-for-sale marketable securities.
HCSG Staff Leasing Solutions, LLC ("Staff Leasing")	2011	Pennsylvania	Staff Leasing offers professional employer organization services to clients in the health care industry.
HCSG Insurance Corp.	2014	New Jersey	HCSG Insurance Corp. is a captive insurance company which provides the Company with certain insurance-related services.
HCSG Labor Supply, LLC ("Labor Supply")	2014	Pennsylvania	Labor Supply offers personnel solutions on an indefinite basis in specific job classifications to clients in the health care industry.

CONSENT OF INDEPENDENT REGISTERED PUBLIC ACCOUNTING FIRM

We have issued our reports dated February 19, 2015, with respect to the consolidated financial statements, schedule, and internal control over financial reporting included in the Annual Report of Healthcare Services Group, Inc. and Subsidiaries on Form 10-K for the year ended December 31, 2014. We hereby consent to the incorporation by reference of said reports in the Registration Statements of Healthcare Services Group, Inc. on Forms S-3 (File No. 333-108182, effective August 22, 2003, File No. 333-137713, effective September 9, 2006, File No. 333-161553, effective August 26, 2009, File No. 333-189986, effective July 17, 2013, and File No. 333-197900, effective August 6, 2014) and on Forms S-8 (File No. 333-92835, effective December 15, 1999, and File No. 333-184612, effective October 26, 2012).

/s/ GRANT THORNTON LLP

New York, New York

February 19, 2015

**Certification of the Chief Executive Officer
Pursuant to Rules 13a-14(a) and 15d-14(a)
Under the Securities Exchange Act, as Amended**

I, Daniel P. McCartney, certify that:

1. I have reviewed this Annual Report on Form 10-K of Healthcare Services Group, Inc.;
2. Based on my knowledge, this report does not contain any untrue statement of a material fact or omit to state a material fact necessary to make the statements made, in light of the circumstances under which such statements were made, not misleading with respect to the period covered by this report;
3. Based on my knowledge, the financial statements, and other financial information included in this report, fairly present in all material respects the financial condition, results of operations and cash flows of the registrant as of, and for, the periods presented in this report;
4. The registrant's other certifying officer and I are responsible for establishing and maintaining disclosure controls and procedures (as defined in Exchange Act Rules 13a-15(e) and 15d-15(e)) and internal control over financial reporting (as defined in Exchange Act Rules 13a-15(f) and 15d-15(f)) for the registrant and have:
 - a) Designed such disclosure controls and procedures, or caused such disclosure controls and procedures to be designed under our supervision, to ensure that material information relating to the registrant, including its consolidated subsidiaries, is made known to us by others within those entities, particularly during the period in which this report is being prepared;
 - b) Designed such internal control over financial reporting, or caused such internal control over financial reporting to be designed under our supervision, to provide reasonable assurance regarding the reliability of financial reporting and the preparation of financial statements for external purposes in accordance with generally accepted accounting principles;
 - c) Evaluated the effectiveness of the registrant's disclosure controls and procedures and presented in this report our conclusions about the effectiveness of the disclosure controls and procedures, as of the end of the period covered by this report based on such evaluation; and
 - d) Disclosed in this report any change in the registrant's internal control over financial reporting that occurred during the registrant's fourth fiscal quarter that has materially affected, or is reasonably likely to materially affect, the registrant's internal control over financial reporting; and
5. The registrant's other certifying officer and I have disclosed, based on our most recent evaluation of internal control over financial reporting, to the registrant's auditors and the audit committee of the registrant's Board of Directors:
 - a) All significant deficiencies and material weaknesses in the design or operation of internal control over financial reporting which are reasonably likely to adversely affect the registrant's ability to record, process, summarize and report financial information; and
 - b) Any fraud, whether or not material, that involves management or other employees who have a significant role in the registrant's internal control over financial reporting

Date: February 19, 2015

/s/ Daniel P. McCartney

Daniel P. McCartney
Chief Executive Officer
(Principal Executive Officer)

**Certification of the Chief Financial Officer
Pursuant to Rules 13a-14(a) and 15d-14(a)
Under the Securities Exchange Act, as Amended**

I, John C. Shea, certify that:

1. I have reviewed this Annual Report on Form 10-K of Healthcare Services Group, Inc.;
2. Based on my knowledge, this report does not contain any untrue statement of a material fact or omit to state a material fact necessary to make the statements made, in light of the circumstances under which such statements were made, not misleading with respect to the period covered by this report;
3. Based on my knowledge, the financial statements, and other financial information included in this report, fairly present in all material respects the financial condition, results of operations and cash flows of the registrant as of, and for, the periods presented in this report;
4. The registrant's other certifying officer and I are responsible for establishing and maintaining disclosure controls and procedures (as defined in Exchange Act Rules 13a-15(e) and 15d-15(e)) and internal control over financial reporting (as defined in Exchange Act Rules 13a-15(f) and 15d-15(f)) for the registrant and have:
 - a) Designed such disclosure controls and procedures, or caused such disclosure controls and procedures to be designed under our supervision, to ensure that material information relating to the registrant, including its consolidated subsidiaries, is made known to us by others within those entities, particularly during the period in which this report is being prepared;
 - b) Designed such internal control over financial reporting, or caused such internal control over financial reporting to be designed under our supervision, to provide reasonable assurance regarding the reliability of financial reporting and the preparation of financial statements for external purposes in accordance with generally accepted accounting principles;
 - c) Evaluated the effectiveness of the registrant's disclosure controls and procedures and presented in this report our conclusions about the effectiveness of the disclosure controls and procedures, as of the end of the period covered by this report based on such evaluation; and
 - d) Disclosed in this report any change in the registrant's internal control over financial reporting that occurred during the registrant's fourth fiscal quarter that has materially affected, or is reasonably likely to materially affect, the registrant's internal control over financial reporting; and
5. The registrant's other certifying officer and I have disclosed, based on our most recent evaluation of internal control over financial reporting, to the registrant's auditors and the audit committee of the registrant's Board of Directors:
 - a) All significant deficiencies and material weaknesses in the design or operation of internal control over financial reporting which are reasonably likely to adversely affect the registrant's ability to record, process, summarize and report financial information; and
 - b) Any fraud, whether or not material, that involves management or other employees who have a significant role in the registrant's internal control over financial reporting

Date: February 19, 2015

/s/ John C. Shea

John C. Shea

Chief Financial Officer

(Principal Financial and Accounting Officer)

**Certification Pursuant to
18 U.S.C. Section 1350,
As Adopted Pursuant to
Section 906 of the Sarbanes-Oxley Act of 2002**

In connection with the Annual Report on Form 10-K of Healthcare Services Group, Inc. (the “Company”) for the year ended December 31, 2014 as filed with the Securities and Exchange commission on the date hereof (the “Report”), I, Daniel P. McCartney, Chief Executive Officer of the of the Company, certify, pursuant to 18 U.S.C. Section 1350, as adopted pursuant to Section 906 of the Sarbanes-Oxley Act of 2002, that to my knowledge:

- (1) The Report fully complies with the requirements of Section 13(a) or 15(d), of the Securities Exchange Act of 1934; and
- (2) That information contained in the Report fairly presents, in all material respects, the financial condition and results of operations of the Company.

Date: February 19, 2015

/s/ Daniel P. McCartney

Daniel P. McCartney

Chief Executive Officer

(Principal Executive Officer)

**Certification Pursuant to
18 U.S.C. Section 1350,
As Adopted Pursuant to
Section 906 of the Sarbanes-Oxley Act of 2002**

In connection with the Annual Report on Form 10-K of Healthcare Services Group, Inc. (the “Company”) for the year ended December 31, 2014 as filed with the Securities and Exchange commission on the date hereof (the “Report”), I, John C. Shea, Chief Financial Officer of the of the Company, certify, pursuant to 18 U.S.C. Section 1350, as adopted pursuant to Section 906 of the Sarbanes-Oxley Act of 2002, that to my knowledge:

- (1) The Report fully complies with the requirements of Section 13(a) or 15(d), of the Securities Exchange Act of 1934; and
- (2) That information contained in the Report fairly presents, in all material respects, the financial condition and results of operations of the Company.

Date: February 19, 2015

/s/ John C. Shea

John C. Shea
Chief Financial Officer
(Principal Financial and Accounting Officer)

TRANSFER AGENT

American Stock Transfer & Trust Co.
99 Wall St.
New York, NY 10005

INDEPENDENT AUDITORS

Grant Thornton LLP
757 Third Avenue,
9th Floor
New York, NY 10017

CORPORATE COUNSEL

Olshan Frome Wolosky LLP
Park Avenue Tower
65 East 55th Street
New York, NY 10022

DIRECTORS

Daniel P. McCartney
Chairman

Theodore Wahl

Michael E. McBryan

CORPORATE OFFICES

Healthcare Services Group, Inc.
3220 Tillman Drive, Suite 300
Bensalem, PA 19020
215-639-4274

INVESTOR RELATIONS

Matthew J. McKee
Vice President of Strategy
investor-relations@hcsgrcorp.com
215-639-4274

ANNUAL STOCKHOLDERS' MEETING

Date: May 26, 2015
Time: 10:00AM
Place: Courtyard Philadelphia
Bensalem
3280 Tillman Drive
Bensalem, PA 19020

STOCK LISTING

Listed on the NASDAQ
Stock Global Select Market
symbol "HCSG"

MARKET MAKERS

As of the end of 2014, the following firms were making a market in the shares of Healthcare Services Group, Inc.

UBS Capital Markets, L.P.
Goldman, Sachs & Co.
Jefferies & Company, Inc.
Morgan Stanley & Co., Inc.
Merrill Lynch, Pierce, Fenner C.L. King & Associates
Citigroup
Wm. Blair & Co.
J.P. Morgan Securities
Credit Suisse Securities USA
Barclays Capital, Inc.
RBC Capital Markets, LLC

John M. Briggs, CPA¹
Lead Independent Director

Diane S. Casey, RN²

Robert L. Frome, Esq.

John J. McFadden²

Robert J. Moss, Esq.¹

Dino D. Ottaviano^{1 2}

¹ Member – Audit Committee

² Member – Nominating, Compensation and Stock Option Committee

CORPORATE OFFICERS

Daniel P. McCartney
Chief Executive Officer

Theodore Wahl
President & Chief Operating Officer

John C. Shea
Chief Financial Officer

Jason J. Bundick
Chief Compliance Officer,
General Counsel & Secretary

Bryan D. McCartney
Executive Vice President

Michael E. McBryan
Executive Vice President



ABOUT YOUR SHARES

Healthcare Services Group, Inc.'s Common Stock is traded on the NASDAQ Global Select Market. On December 31, 2014 there were approximately 72,878,000 of the Company's common shares issued and outstanding. As of February 17, 2015, there were approximately 600 holders of record of the common stock, including holders whose stock was held in nominee name by brokers or other nominees. The high and low closing price quotations for our Common Stock during the years ended December 31, 2014 and 2013, ranges as follows:

	2014 High	2014 Low	2013 High	2013 Low
1st Qtr.	\$29.14	\$24.40	\$25.84	\$22.40
2nd Qtr.	\$30.58	\$28.12	\$25.95	\$21.60
3rd Qtr.	\$30.69	\$25.51	\$26.54	\$23.61
4th Qtr.	\$31.96	\$26.54	\$29.53	\$24.80

AVAILABILITY OF FORM 10-K

A copy of the Healthcare Services Group, Inc.'s 2014 Annual Report on Form 10-K, as filed with the Securities and Exchange Commission is available on the Company's website "www.hcsgrcorp.com". Additionally, it will be provided without charge to each shareholder making a written request to the Investor Relations Department of the Company at its Corporate Offices.

3220 Tillman Drive
Glenview Corporate Center
Suite 300
Bensalem, PA 19020

