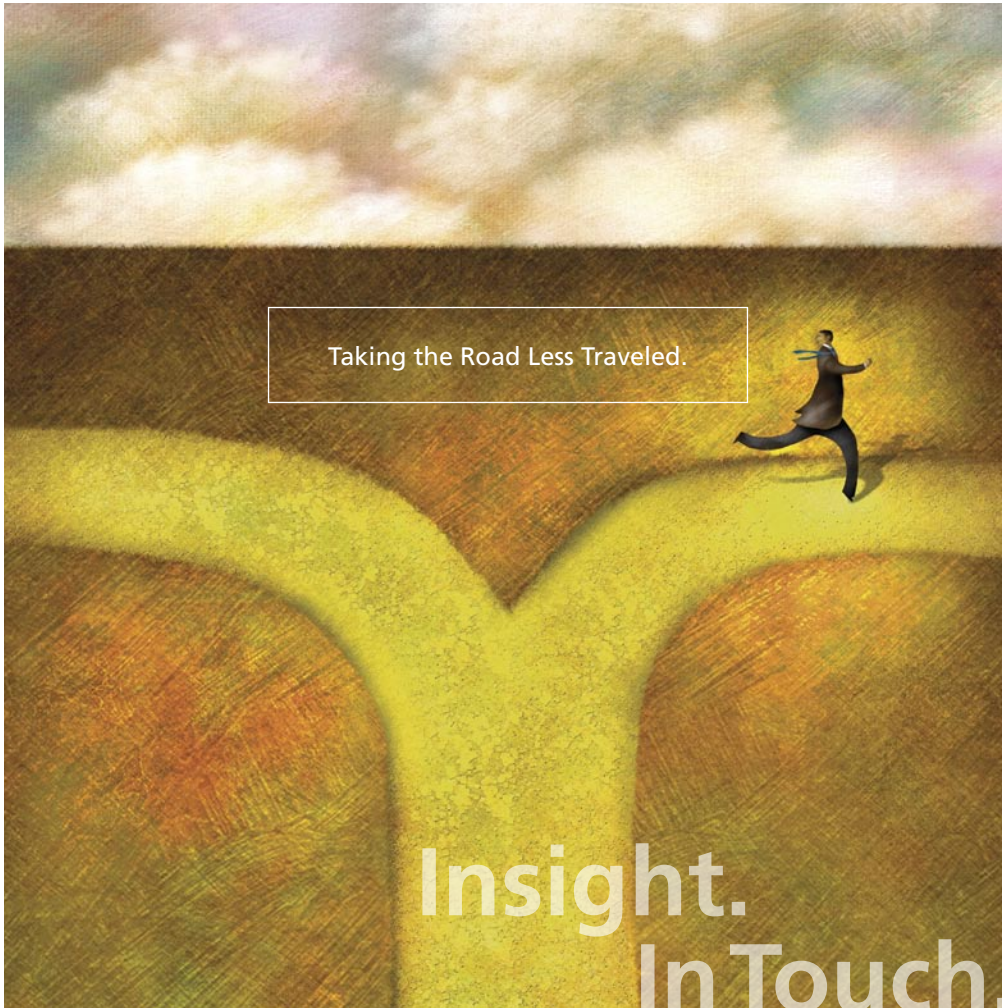


CORVEL



Taking the Road Less Traveled.

Insight.  
In Touch.

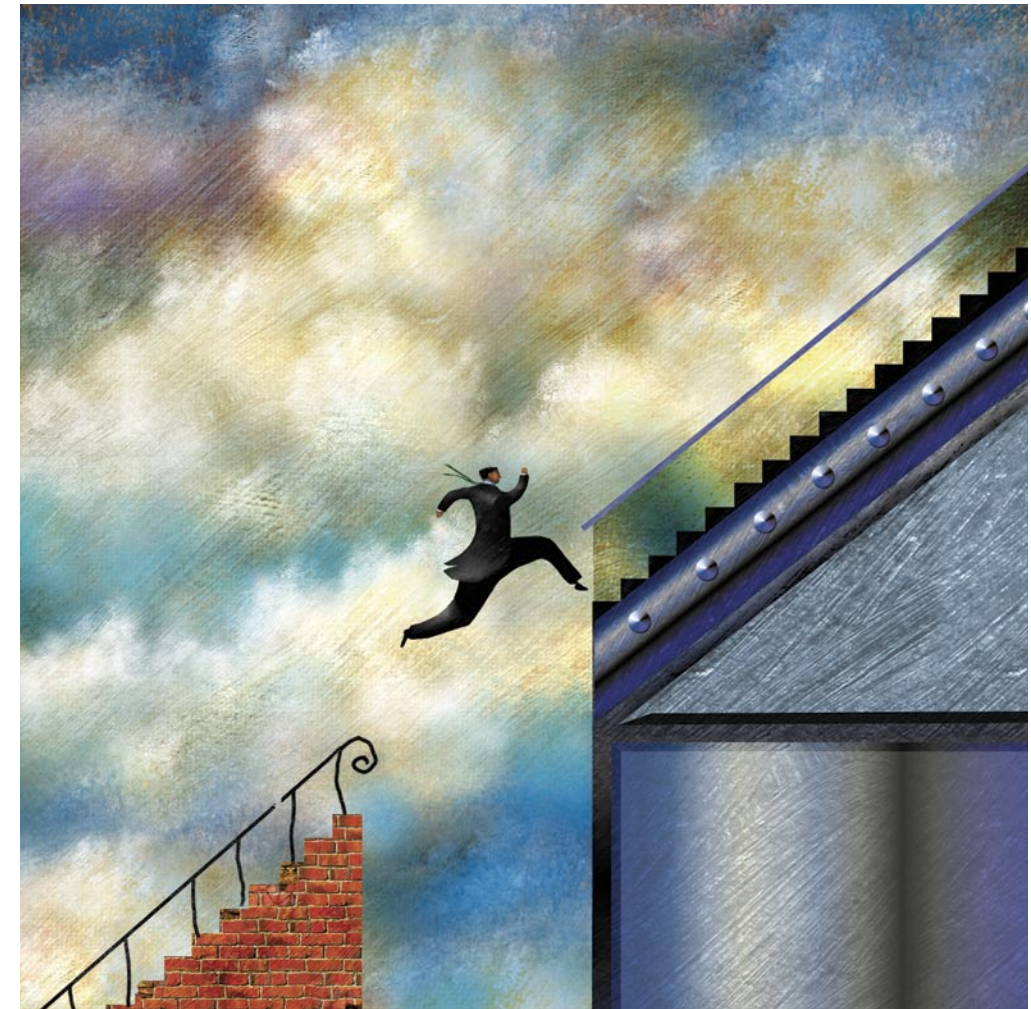
CorVel is changing the way healthcare is managed. By investing in resources and infrastructure, CorVel has become positioned for a future of opportunities and efficiencies. Through our network of offices across the country, we are represented by a community of professionals united behind our vision of insightful customer service. Today, we have the analytic power to provide unique perspectives on claims and support informed decision making at the local, hands-on level.

We guide with *insight*.  
We are locally *in touch*.

Every day  
we learn  
something **new.**

In this period of time, change is the only constant. The path has been unclear at times. Obstacles appear suddenly and with a vengeance. Markets that were viable just months ago no longer exist. But new opportunities open everyday. Identifying these opportunities is integral to our vision. Our strategy remains focused on investments for our future.

Every day  
we work  
more **efficiently.**



## The right **information.**

Committed, driven, customer focused, our people are the living articulation of the CorVel mission. Our core group of associates has been together for years and years. It is the one-on-one relationships they forge with our customers that are the foundation of our company. You can spend millions on the latest technology, but as always, people make the difference.

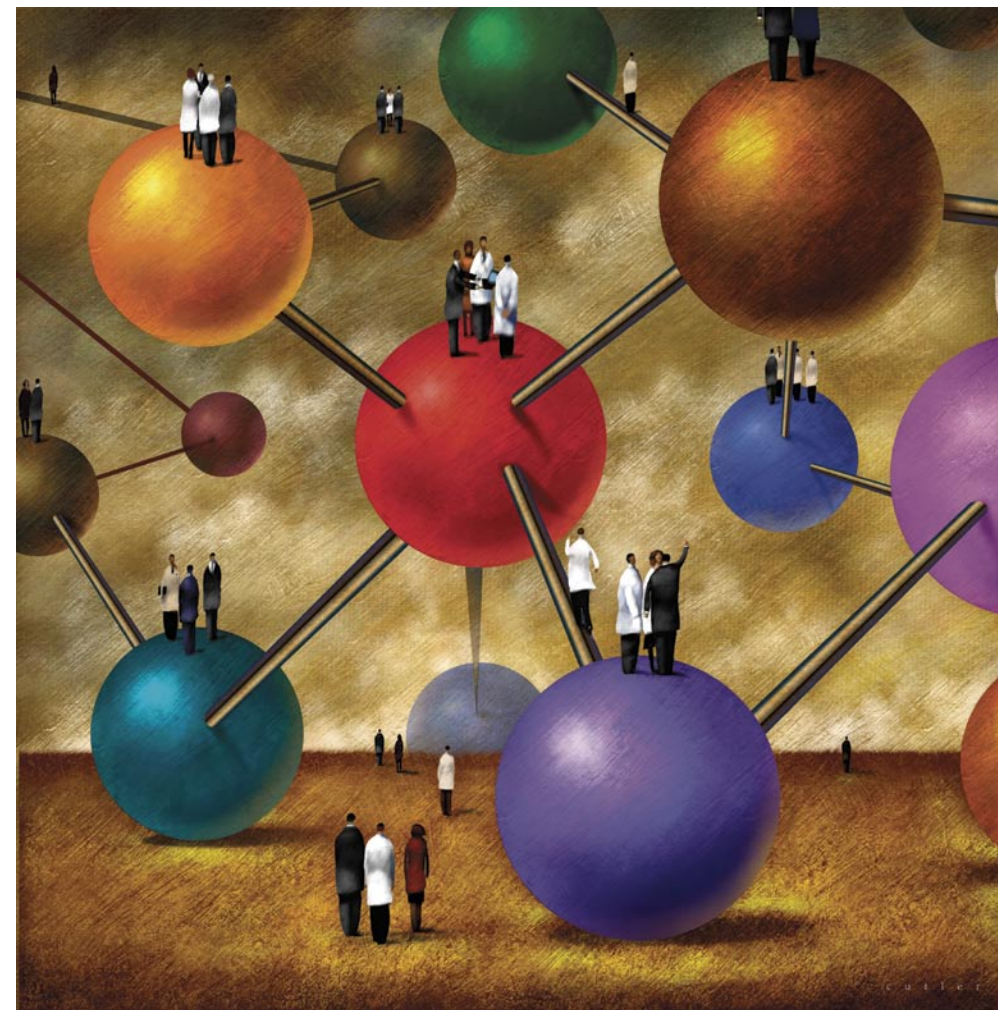
**people.** The right  
The right **time.**



# A healthcare management infrastructure

CorVel is not only a healthcare management company. In fact, it is a data management company. New ways of gathering, analyzing and understanding information helps us facilitate care and manage costs more efficiently. The better we use this vast resource, the better we will serve our customers.

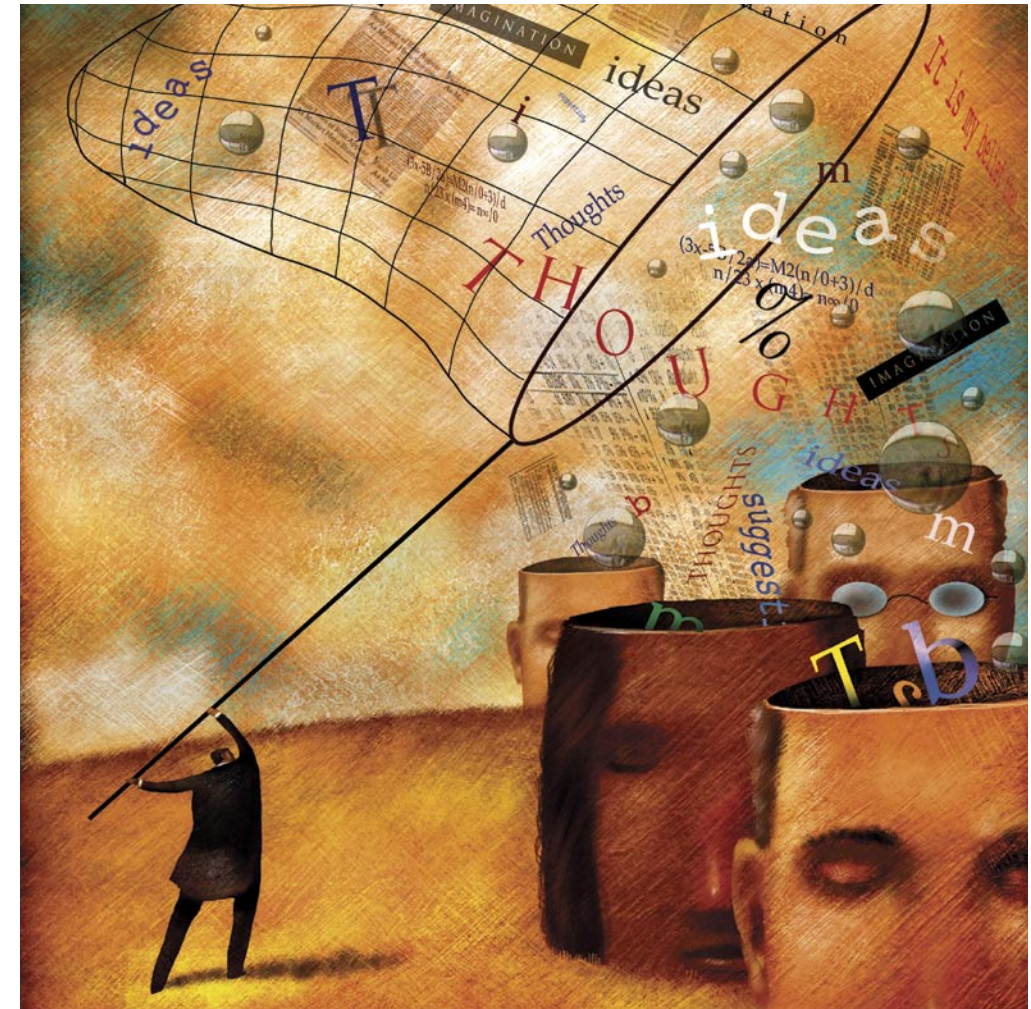
built over  
years  
of investment.



It's not  
enough to **capture data.**

Cutting through the volumes of claims data and putting the necessary information in the right hands is our goal. Our response is quick and efficient. Our results are undeniable. Insight is an invaluable asset when delivered in the right way at the right time. That's the CorVel mission.

You must **know**  
what to do  
with it.



**CorVel Corporation**

2010 Main Street  
Suite 600  
Irvine, California 92614

Telephone: 888.7.CORVEL

[www.corvel.com](http://www.corvel.com)

CORVEL®

---