



LOCATION: Petro Jilin Oil Field, China — — EQUIPMENT: Twin Disc TA91-8501 Power-Shift Transmission System



LOCATION: Odessa, Texas, USA — — EQUIPMENT: Twin Disc SP211 Power Take-off

Cover: SJ Petroleum Machinery Company has this fracturing rig, equipped with a Cummins 3000-hp (2237-kW) engine driving the high-pressure pump through a Twin Disc 8500 transmission system, operating in the China Petro Jilin Oil Field.

Above: This Mustang 600HD Mobile Land Rig owned by Rig Works, Inc. uses a variety of Twin Disc PO air clutches to control the double-drum drawworks as the unit completes, maintains and drills oil and gas wells in the Odessa/Midland oil fields of western Texas.

Company engineers work hand-in-hand with customers and engine manufacturers to design products with characteristics unique to their specific applications. Twin Disc supplies the commercial, pleasure craft and military segments of the marine market with transmissions, surface and waterjet drives, electronic controls, propellers and boat management systems. Its off-highway transmission products are used in agricultural, all-terrain specialty vehicle and military applications.

Twin Disc also sells industrial products such as power take-offs, mechanical, hydraulic and modulating clutches and control systems to the agricultural, environmental and energy and natural resources markets. The Corporation, which is a multinational organization headquartered in Racine, Wisconsin, currently has a diverse shareholder base with approximately one-third of the outstanding shares held by management, active and retired employees and other long-term investors.

FINANCIAL HIGHLIGHTS

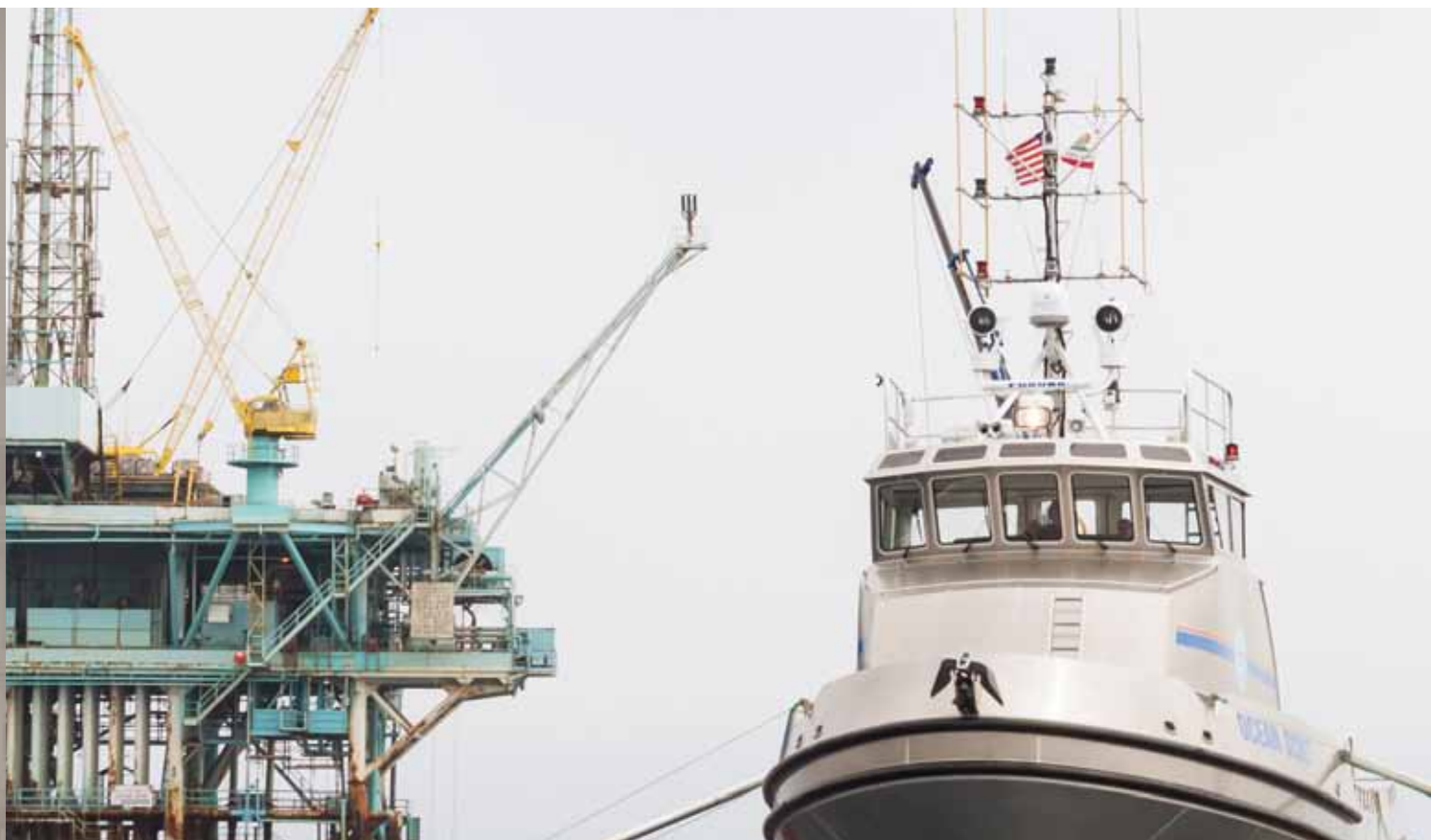
	2012	2011	2010
Net Sales	\$355,870	\$310,393	\$227,534
Net Earnings	26,112	18,830	597
Basic Earnings Per Share	2.29	1.66	0.05
Diluted Earnings Per Share	2.26	1.64	0.05
Dividends Per Share	0.34	0.30	0.28
Average Shares Outstanding For The Year	11,409,467	11,319,081	11,063,417
Diluted Shares Outstanding For The Year	11,555,561	11,462,562	11,159,282

In thousands of dollars except per share and shares outstanding statistics.



LOCATION: India — — EQUIPMENT: MGX-5145SC Marine Transmissions, Arneson Surface Drives™ and Rolla™ Propellers

Indian Customs spec'd this 59.4-foot (18-meter) patrol boat built by Destination Marine for speed and agility with twin Caterpillar 873-hp (651-kW) engines driving through Twin Disc MGX-5145SC QuickShift® transmissions to ASD14 Arneson Surface Drives™ with Rolla™ Propellers.



SALES AND EARNINGS BY QUARTER

2012	<i>1st QTR</i>	<i>2nd QTR</i>	<i>3rd QTR</i>	<i>4th QTR</i>	<i>YEAR</i>
Net Sales	\$81,330	\$82,941	\$95,490	\$96,109	\$355,870
Gross Profit	30,768	29,562	33,056	28,246	121,632
Net Earnings	9,581	5,857	9,393	1,281	26,112
Basic Earnings Per Share	0.84	0.51	0.82	0.11	2.29
Diluted Earnings Per Share	0.83	0.51	0.81	0.11	2.26
Dividends Per Share	0.08	0.08	0.09	0.09	0.34
Stock Price Range (High - Low)	42.82 - 25.72	47.39 - 23.08	40.51 - 26.00	26.97 - 16.55	47.39 - 16.55
2011					
Net Sales	\$61,395	\$75,160	\$76,471	\$97,367	\$310,393
Gross Profit	20,023	23,757	27,782	36,121	107,683
Net Earnings	2,656	4,034	4,548	7,592	18,830
Basic Earnings Per Share	0.24	0.36	0.40	0.67	1.66
Diluted Earnings Per Share	0.24	0.35	0.40	0.66	1.64
Dividends Per Share	0.07	0.07	0.08	0.08	0.30
Stock Price Range (High - Low)	13.95 - 10.52	30.25 - 12.68	35.10 - 25.24	39.43 - 29.22	39.43 - 10.52

In thousands of dollars except per share and stock price range statistics.

LOCATION: Santa Barbara, California, USA — — EQUIPMENT: MGX-6599RV Marine Transmissions and EC300 Controls

Clean Seas LLD operates the 65-foot (20-meter) "Ocean" Class OSR/V Oil Spill Response Vessel built by Rozema Boat Works and uses three-station EC300 controls to precisely manage two Twin Disc MGX-6599RV QuickShift® transmissions driven by twin Caterpillar 1500-hp (1119-kW) engines to patrol the Santa Barbara coast and Channel Islands.

TO OUR SHAREHOLDERS

Driven by an exceptionally strong first nine months of the year reflecting historically high demand for oil and gas transmissions, fiscal year 2012 produced record results in both sales and earnings. Beyond the solid performance in the energy sector, improving demand in most of our other markets also contributed to the very positive result.

We are pleased to report that the Company continues to be economically profitable—earning a return greater than our cost of capital.

Continuing challenging conditions in the global megayacht market required us to take a non-cash goodwill impairment charge at our Italian subsidiary. We remain optimistic that this market will recover in due course and that our differentiating product technologies will gain increased market share in the meantime.

Fiscal year 2012 was a busy year—introducing new products, getting shipments to customers and expanding our global reach. We could not have accomplished all that we did without the leadership and support of our associates around the world. To them we are very grateful.

FINANCIAL RESULTS

Net sales for fiscal 2012 were \$355.9 million compared to \$310.4 million in fiscal 2011. Net earnings for the current fiscal year was \$26.1 million, or \$2.26 per diluted share, compared to \$18.8 million, or \$1.64 per diluted share, for the prior year.

The year began strongly and momentum increased through the first nine months of the fiscal year at which point the softening outlook for our oil and gas transmission business impacted unfavorably the fourth quarter.

Gross profit, as a percent of sales, for fiscal year 2012 held at 34.2 percent compared to 34.7 percent a year ago. However, gross margin dipped in the fourth quarter to 29.4 percent, compared to 37.1 percent for the prior year, reflecting the change in our mix of sales resulting from lower energy shipments as well as due to the unfavorable absorption impact of a significant inventory reduction realized in the final quarter of the year.

Spending on marketing, engineering and administrative (MEA) expenses held steady at \$73 million for both fiscal years 2011 and 2012.



LOCATION: Laos — — EQUIPMENT: IG-5145 Transmission

Dewatering a copper/gold mine in Laos, this Weir Minerals Multiflo® Pump uses a Twin Disc IG-5145 transmission to precisely match engine speed and pump speed for maximum efficiency.

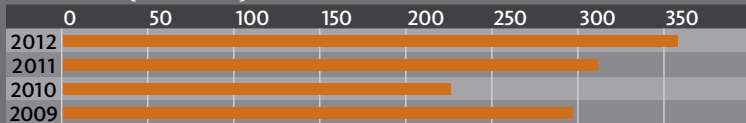


Rosenbauer Panther Class 5 6x6 *Stinger* Rapid Intervention Vehicle with High Reach Extendable Turret is equipped with a Detroit Diesel 665-hp (496-kW) engine working through a TD61-1180 fully automatic power-shift 6-speed transmission to quickly “pump and roll” at Dallas Love Field Airport, Dallas, Texas.

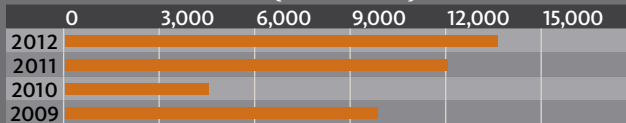
Opposite: Four Caterpillar engines totaling 9000 hp (6711 kW) driving through four MGX-61000SC QuickShift® transmissions to power four jet drives to move the Gulf Craft M/V *Bluewater Chief* crisply through the water at 25 knots, fully laden at 150 tons (136 metric tons).

LOCATION: Dallas, Texas, USA — — EQUIPMENT: Twin Disc TD61-1180 Automatic Transmission System

NET SALES (\$ millions)



CAPITAL EXPENDITURES (\$ thousands)



In preparing our financial statements for fiscal year 2012, we concluded that we were required to take in the fourth quarter a non-cash impairment charge, amounting to \$3.7 million, or \$0.32 per diluted share, for the write-down of goodwill for our Italian operation due to the softness in the megayacht market.

The net effective tax rate for the fiscal year 2012 was 41.2 percent, slightly higher than the prior year rate of 40.8 percent. However, the net effective tax rate for the fourth quarter was significantly higher due to the non-deductible impairment charge and to a lesser extent a combination of other tax-related adjustments.

Our financial condition continues to be strong. Total debt to total capital stands at 19.0 percent as of the end of fiscal year 2012 compared to 17.7 percent for the prior fiscal year. EBITDA improved to \$56.8 million in the current fiscal year compared to \$43.5 million for the prior year. Capital expenditures in fiscal 2012 increased slightly to \$13.7 million from \$12.0 million a year ago. During the year we raised our dividend 12.5 percent to \$0.36 per diluted share and in the fourth quarter we repurchased 125,000 shares of common stock.

OPERATIONS REVIEW

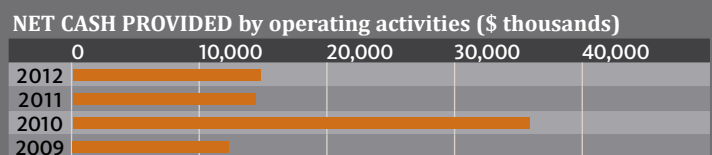
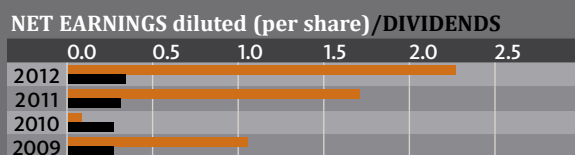
Serving diverse product markets and geographies continued to support our growth strategy. While the pressure-pumping market provided the major impetus for growth during the year, our sales to our industrial and commercial marine sectors also contributed to increased revenues. Other markets, such as land- and marine-based military and airport rescue and fire fighting, held steady. The global megayacht market remained challenging. More specific discussion of our markets may be seen in the following section of this report.

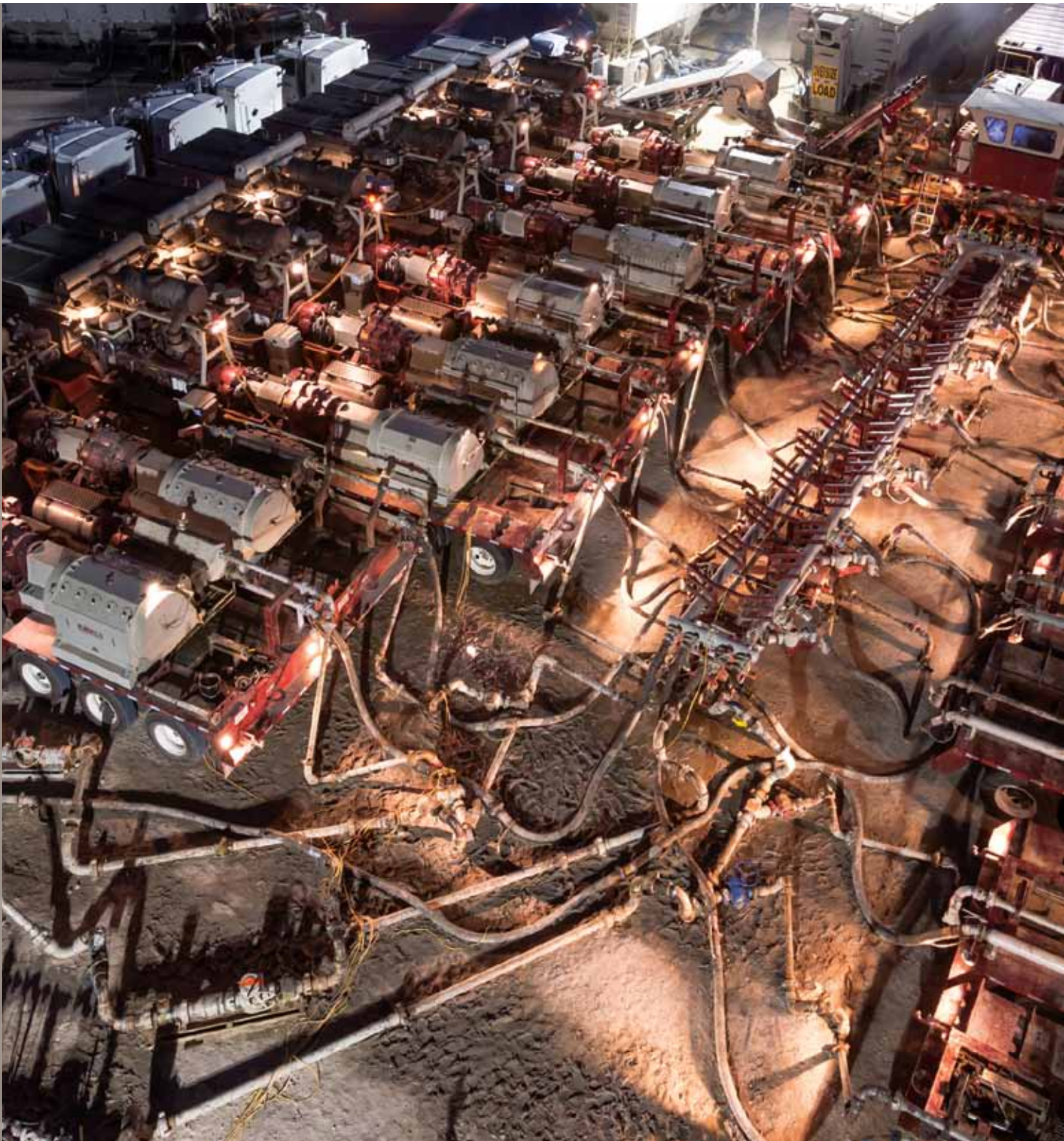
While our North American end market maintained its leadership in our sales mix, sales to Asia surpassed Europe for the first time reflecting both solid growth in Asia and revenue declines from Europe's softer market conditions.

Early in the fiscal year we announced the consummation of a strategic partnership with Caterpillar to develop our joystick technology solutions for vessels that use a standard



LOCATION: Louisiana, USA — EQUIPMENT: MGX-6100SC QuickShift® Marine Transmissions





LOCATION: Midland oil fields, Texas, USA — — EQUIPMENT: Twin Disc TA91-8501 Automatic Transmission System

Pumpco Energy Services, a leading provider of pressure-pumping services for the oil and gas industry and operating in key oil and gas basins in the United States, is a long-time user of Twin Disc's larger 8500 transmission system for its higher horsepower fracturing and cementing operations.

conventional shaft arrangement and to develop a future innovative Cat POD system which will incorporate our patented QuickShift® transmission technology. Leveraging our new transmission and controls technology through Caterpillar's sales, marketing and distribution channels should provide substantial growth opportunities in the future.

During the year we introduced the 7500 transmission to the pressure-pumping market and have received very positive feedback from customers. While market demand has softened due to macro economic factors, this transmission has solid prospects for the future.

Finally, during the past year we have reorganized to be more effective in the geographies we serve. Two areas of focus have been Europe and Asia. In Europe we have implemented a "pan-European" management structure to be more customer focused as well as more efficient. In Asia we have been expanding our human resources and assets to take better advantage of the market opportunities.

OUTLOOK

Our six-month backlog at June 30, 2012, was \$99 million, compared to \$147 million at the end of fiscal 2011. Certain areas of our business are demonstrating improving trends, especially customers in our industrial and commercial marine markets. Sales to our Asian customers, including oil and gas transmissions, continue to be strong and sales of marine products into the U.S. Gulf Region have improved.

Nevertheless, changes to the oil and gas market are impacting our near-term outlook. We anticipate a challenging North American pressure-pumping market to remain for at least the first half of fiscal 2013 as rig operators adjust to the North American natural gas supply overhang and lower prices. The slowdown will impact our sales and profitability, and we remain cautious about the outlook for fiscal 2013.

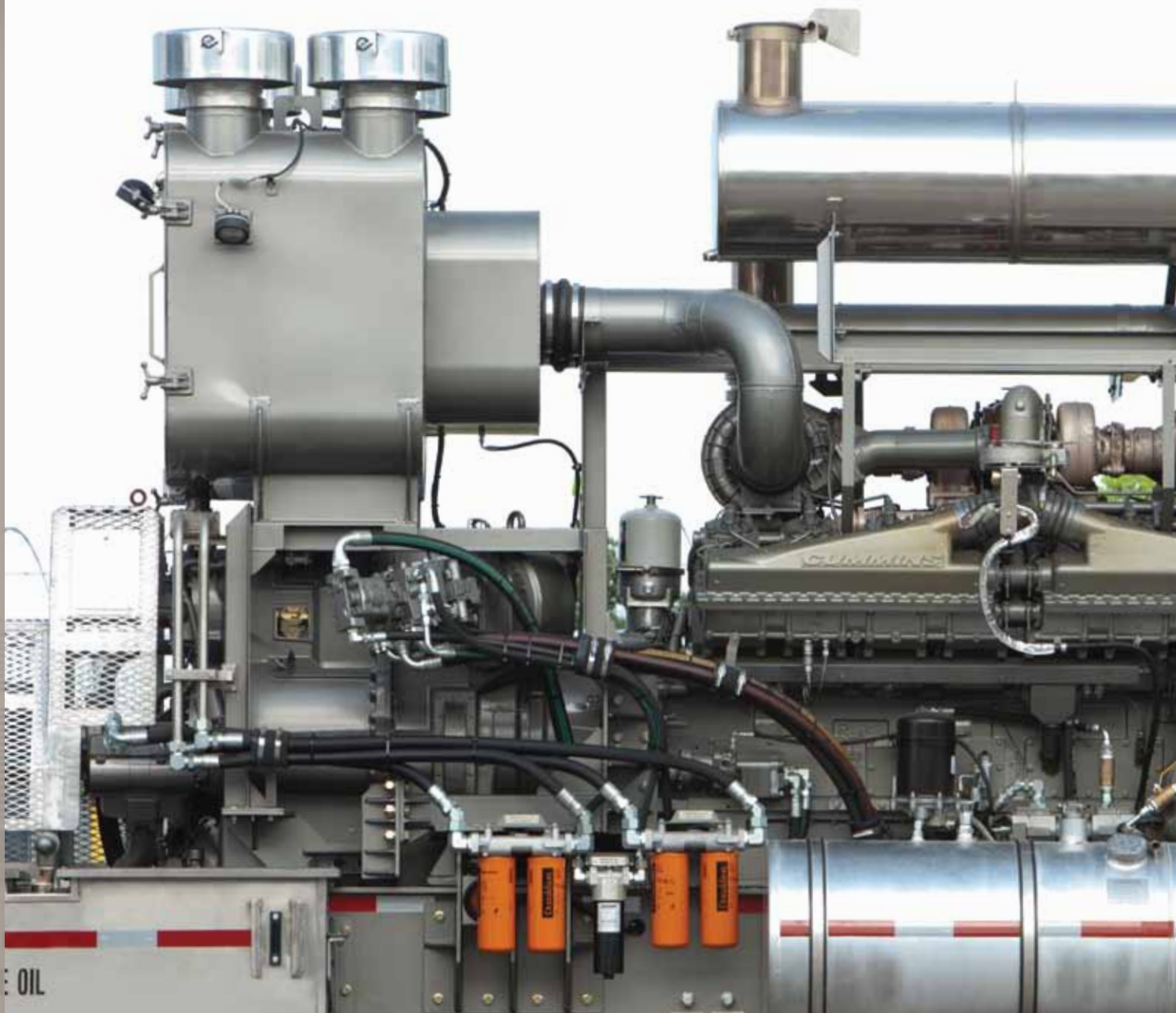


MICHAEL E. BATTEN
Chairman, Chief Executive Officer



JOHN H. BATTEN
President, Chief Operating Officer





LUBE OIL



LOCATION: Pennsylvania, USA — — EQUIPMENT: Twin Disc 7500 Transmission

This page: CS&P Technologies, Houston, TX, designs and manufactures a comprehensive array of oil and gas exploring, drilling and recovery equipment, including powerful but relatively compact and “road legal” fracturing rigs featuring Cummins 2500-hp (1864-kW) engines driving pumps through Twin Disc’s new 7500 transmission.

Bottom left: Long-time Twin Disc customer Trican, with fracturing operations all over the world, has this one near Spirit River, Alberta, Canada, where 50 Stewart-Stevenson-manufactured frac rigs using Cummins 2300-hp (1715-kW) engines working through Twin Disc 8500 transmission systems create up to 10,000 psi (70 MPa) pumping pressure down the well.

INDUSTRIAL TRANSMISSIONS

Twin Disc benefitted from a very strong demand in the pressure-pumping sector of the oil and gas industry, as a result of the continuing growth in the numbers of drilling and fracturing rigs which began in fiscal 2011. Orders from our North American customers almost doubled from the previous peak in fiscal 2007, and interest in our 8500 transmission system and 7500 transmission continued to grow in China, which now represents 25% of our 8500 backlog.

In the second half of the fiscal year, North American sales in pressure-pumping equipment began to subside as the inventory of natural gas continued to grow. A mild winter, coupled with increased well initiation on expiring leases, created an oversupply situation. However, we remain very optimistic about the medium- to long-term prospects for increased numbers of fracturing rig installations and resulting orders for our products.

While the North American market takes a short pause as the inventory, both in gas and equipment, continues to be worked down from current levels, we are seeing a growing demand both in Asia and South America.

Our new 7500 transmission went into full production in the second half of the year, only to suffer, as did the 8500, from the temporary reduced market demand. Nevertheless, in the field the 7500 has demonstrated excellent performance, productivity and reliability.

The global ARFF (Airport Rescue and Fire Fighting) market continued to grow throughout fiscal 2012, propelled in large part by expanding markets in the Middle East and South America. Ongoing projects in Saudi Arabia, Brazil and China should continue to drive sales in fiscal 2013 and beyond. To meet the future needs of our global ARFF customers, our engineering team is spending a lot of time in the lab and end markets, as they design the next generation 4001 Series ARFF transmission.

Our legacy military business remained level during fiscal 2012, as demand for our XT-1410 transmission for use in the M88 tank retriever remains at historically high levels. Production estimates for the M88 now extend out to 2016/17.



This Oshkosh Striker™ 4500 8x8 ARFF (Airport Rescue & Fire Fighting) Rapid Intervention Vehicle with its 950-hp (708-kW) Caterpillar engine driving a TD61-2619 electronic automatic power-shift 6-speed transmission can charge from 0 to 50 mph (80 km/h) within 35 seconds, to offer the ultimate in rapid emergency response to Dallas/Fort Worth International Airport.



LOCATION: Odessa/Midland Oil Fields, Texas, USA — — EQUIPMENT: Twin Disc PO-124, PO-324, and PO-108 Air Clutches

This Mustang 600HD Mobile Land Rig owned by Rig Works, Inc. uses a variety of Twin Disc PO air clutches to control the double-drum drawworks as the unit completes, maintains and drills oil and gas wells in the Odessa/Midland oil fields of western Texas.

INDUSTRIAL PRODUCTS

Our global industrial markets saw a significant recovery in fiscal 2012. In North America, our larger PTOs and air clutches drove the growth, as the aggregate, recycling, construction and oil and gas markets recovered from post-recession levels. Demand for our hydraulic PTOs also increased during the year as we released new models.

In Asia, we saw demand for our large PTOs increase for flood pumps in Taiwan and oil field applications in China.

Fiscal 2012 sales in Australia jumped significantly from last year primarily because of the resources and mining boom and demand for our clutches and PTOs.

Our industrial markets in Europe remained the lone bright spot for these troubled economies. Small construction and forestry equipment fed the demand. In addition, the engineering team at our Italian operations released a new high-horsepower pump drive for the global market, and we are anticipating its acquiring good market share in fiscal 2013.



LOCATION: Adelaide, South Australia — — EQUIPMENT: Twin Disc SP314P1 Power Take-off

Broons Pty Ltd, Adelaide, South Australia, counts on many years of rugged reliability of a Twin Disc SP314P1 PTO to actuate its Cat engine-driven hammer mill rock crusher to produce in excess of 3531 cubic feet (100 cubic meters) per hour of granular stone from large oversize hard rock.

In order to meet stringent Coast Guard safety and emissions requirements, C&C Marine uses a specially designed Laborde 170-hp (127-kW) barge power unit working through a Twin Disc SP211HP PTO to drive the pump on a liquid cargo barge.



Kvichak Marine, Ballard, Washington, announced the launch of their 500th hull this year, with a 45-foot (14-meter) Response Boat Medium – C “Patrol 9” for the Seattle Police Department Harbor Patrol Unit, equipped with twin Detroit Diesel 825-hp (615-kW) engines driving through Twin Disc MG-5114SC transmissions. Also pictured are the USCG RBM-M and NYPD sister ships.



LOCATION: Panama Canal, Panama — — EQUIPMENT: Twin Disc 3000-8-HD Marine Control Drives

The Port Authority of Panama Canal depends on the precision maneuvering of this 90-foot (27.4-meter) ship-handling tug built by Cheoy Lee and powered by two GE engines rated at 2923 hp (2180 kW) driving two Twin Disc 3000-8-HD Marine Control Drives (MCDs).

The 168-foot (51-meter), 600-passenger Statue Cruises boat *Barrow*, operated by Hornblower Cruises and Events out of New York City, was converted to twin, bi-directional, battery-powered electric motors driving through specially designed Twin Disc MG-5204SC transmissions with EC300 controls, to provide motor speed and directional control.

COMMERCIAL MARINE MARKETS

Another fiscal 2012 highlight was the continued recovery of our global commercial marine markets. In some areas, like North America, revenues are approaching pre-recession levels, especially in the brown water inland waterway business. The offshore market has also rebounded after the Macondo Deepwater Horizon well blowout in the Gulf, and new orders for the offshore crew and supply vessels continue to improve. With oil still in the \$80-100 per barrel range, we can expect continued strength from the offshore oil and gas market.

High demand for coal transportation tugs in Indonesia drove increased sales from Asia for our deep case work boat marine transmissions, and a rebounding offshore market in Malaysia and China stimulated orders for our FSV and OSV marine transmissions.

Patrol boat projects showed further growth in Asia, especially China, as the need for coastal security continues to increase. Our propulsion package of Twin Disc QuickShift® marine transmissions, electronic controls, Arneson Surface Drives™ and Rolla™ propellers are recognized as the standard of fast patrol-boat technology.

In Australia, sales to commercial marine projects remained steady with increased activity in new technologies such as our EC300DP (electronic controls for use in Dynamic Positioning applications) in support vessels for offshore oil and gas operations. Our Australian team successfully commissioned their first EC300DP system for an offshore service vessel in this sector. Marine transmission sales to government and military vessels remained strong, as our QuickShift technology is fast being recognized as the industry standard.



LOCATION: Pucallpa, Peru — — EQUIPMENT: Twin Disc MG-5222 Marine Transmissions

In the port of Pucallpa, in the Peruvian jungle, *M/F Pacifico IV*, a 201-foot (61-meter) cargo vessel owned by Transpacífico SAC, prepares to embark on the Rio Ucayali with the reliable power package of a 600-hp (447-kW) Caterpillar engine driving through a Twin Disc MG-5222 marine transmission.

The 175' crewboat "Big Blue," built by Breaux's Bay Craft and owned by CrewBoats, Inc., uses four Caterpillar 1923-hp (1434-kW) engines working through Twin Disc MGX-61000SC transmissions with EC300 controls to deliver men and materials to offshore rigs in the Gulf of Mexico at speeds up to 28 knots.



LOCATION: New Zealand — — EQUIPMENT: MGX-6599A Marine Transmissions, EJS™, BCS Power Steering and Hydraulic Bow and Stern Thrusters

This Riviera 75 Enclosed Flybridge Cruiser, designed especially for New Zealand waters, features a full contingent of Twin Disc products including twin QuickShift® MGX-6599A marine transmissions, EC300 controls, BCS Power Steering and the revolutionary Express Joystick System® with BCS BP550 Hydraulic Bow and Stern Thrusters.

PLEASURE CRAFT MARKET

The faltering world economy continued to stifle the global pleasure craft markets. But our new Express Joystick System[®], EJS[™], has allowed us to capture new business in Australia and Asia, as our breakthrough technology very favorably differentiates us from the competition. Caterpillar has released the Cat[®] Three60 joystick system—which incorporates our EJS—to their dealers, and we are anticipating that this will begin to drive an increased pleasure craft demand for us in fiscal 2013.



FORM 10-K

ANNUAL REPORT PURSUANT TO SECTION 13 OR 15(d) OF THE SECURITIES EXCHANGE ACT OF 1934
For the Fiscal Year Ended June 30, 2012
Commission File Number 1-7635

TWIN DISC, INCORPORATED

(Exact Name of Registrant as Specified in its Charter)

Wisconsin(State or Other Jurisdiction of
Incorporation or Organization)**39-0667110**(I.R.S. Employer
Identification Number)**1328 Racine Street, Racine, Wisconsin**
(Address of Principal Executive Office)**53403**
(Zip Code)**(262) 638-4000**

Registrant's Telephone Number, including area code

Securities registered pursuant to Section 12(b) of the Act:

Title of each class	Name of each exchange on which registered:
Common stock, no par	The NASDAQ Stock Market, LLC
Preferred stock purchase rights	The NASDAQ Stock Market, LLC

Securities registered pursuant to Section 12(g) of the Act:

None
(Title of Class)

Indicate by check mark if the registrant is a well-known seasoned issuer, as defined in Rule 405 of the Securities Act.

Yes No

Indicate by check mark if the registrant is not required to file reports pursuant to Section 13 or Section 15(d) of the Act.

Yes No Indicate by check mark whether the registrant (1) has filed all reports required to be filed by Section 13 or 15(d) of the Securities Exchange Act of 1934 during the preceding 12 months (or for such shorter period that the registrant was required to file such reports), and (2) has been subject to such filing requirements for the past 90 days. Yes No

Indicate by check mark whether the registrant has submitted electronically and posted on its corporate Web site, if any, every Interactive Data File required to be submitted and posted pursuant to Rule 405 of Regulation S-T (§232.405 of this chapter) during the preceding 12 months (or for such shorter period that the registrant was required to submit and post such files).

Yes No Indicate by check mark if disclosure of delinquent filers pursuant to Item 405 of Regulation S-K is not contained herein, and will not be contained, to the best of the registrant's knowledge, in definitive proxy or information statements incorporated by reference in Part III of this Form 10-K or any amendment to this Form 10-K.

Indicate by check mark whether the registrant is a large accelerated filer, an accelerated filer, a non-accelerated filer, or a smaller reporting company (as defined in Rule 12b-2 of the Exchange Act).

Large Accelerated Filer Accelerated Filer Non-accelerated Filer Smaller Reporting Company Indicate by check mark whether the registrant is a shell company (as defined in Rule 12b-2 of the Act). Yes No

At December 31, 2011, the last business day of the registrant's second fiscal quarter, the aggregate market value of the common stock held by non affiliates of the registrant was \$313,655,596. Determination of stock ownership by affiliates was made solely for the purpose of responding to this requirement and registrant is not bound by this determination for any other purpose.

At August 17, 2012, the registrant had 11,404,246 shares of its common stock outstanding.

DOCUMENTS INCORPORATED BY REFERENCE:

Portions of the Proxy Statement for the Annual Meeting of Shareholders to be held October 19, 2012, which will be filed pursuant to Regulation 14A not later than 120 days after the end of the fiscal year covered by this report, are incorporated by reference into Part III.

PART I

ITEM 1. BUSINESS

Twin Disc was incorporated under the laws of the state of Wisconsin in 1918. Twin Disc designs, manufactures and sells marine and heavy duty off-highway power transmission equipment. Products offered include: marine transmissions, surface drives, propellers and boat management systems as well as power-shift transmissions, hydraulic torque converters, power take-offs, industrial clutches and controls systems. The Company sells its products to customers primarily in the pleasure craft, commercial and military marine markets as well as in the energy and natural resources, government and industrial markets. The Company's worldwide sales to both domestic and foreign customers are transacted through a direct sales force and a distributor network. The products described above have accounted for more than 90% of revenues in each of the last three fiscal years.

Most of the Company's products are machined from cast iron, forgings, cast aluminum and bar steel which generally are available from multiple sources and which are believed to be in adequate supply.

The Company has pursued a policy of applying for patents in both the United States and certain foreign countries on inventions made in the course of its development work for which commercial applications are considered probable. The Company regards its patents collectively as important but does not consider its business dependent upon any one of such patents.

The business is not considered to be seasonal except to the extent that employee vacations are taken mainly in the months of July and August, curtailing production during that period.

The Company's products receive direct widespread competition, including from divisions of other larger independent manufacturers. The Company also competes for business with parts manufacturing divisions of some of its major customers. Primary competitive factors for the Company's products are performance, price, service and availability. The Company's top ten customers accounted for approximately 49% of the Company's consolidated net sales during the year ended June 30, 2012. There were no customers that accounted for 10% or more of consolidated net sales in fiscal 2012.

Unfilled open orders for the next six months of \$98,746,000 at June 30, 2012, compares to \$146,899,000 at June 30, 2011.

The Company saw a decline in orders by oil and gas customers for its 8500 transmission system as current demand has softened for new high-horsepower rigs due to the North American natural gas supply overhang and lower prices. In addition, the Company has begun to accept orders and has shipped initial units of its new 7500 transmission for the oil and gas market. Since orders are subject to cancellation and rescheduling by the customer, the six-month order backlog is considered more representative of operating conditions than total backlog. However, as procurement and manufacturing "lead times" change, the backlog will increase or decrease, and thus it does not necessarily provide a valid indicator of the shipping rate. Cancellations are generally the result of rescheduling activity and do not represent a material change in backlog.

Management recognizes that there are attendant risks that foreign governments may place restrictions on dividend payments and other movements of money, but these risks are considered minimal due to the political relations the United States maintains with the countries in which the Company operates or the relatively low investment within individual countries. No material portion of the Company's business is subject to renegotiation of profits or termination of contracts at the election of the Government.

Engineering and development costs include research and development expenses for new product development and major improvements to existing products, and other costs for ongoing efforts to refine existing products. Research and development costs charged to operations totaled \$2,657,000, \$2,475,000 and \$2,347,000 in fiscal 2012, 2011 and 2010, respectively. Total engineering and development costs were \$9,508,000, \$8,776,000 and \$7,885,000 in fiscal 2012, 2011 and 2010, respectively.

Compliance with federal, state and local provisions regulating the discharge of materials into the environment, or otherwise relating to the protection of the environment, is not anticipated to have a material effect on capital expenditures, earnings or the competitive position of the Company.

The number of persons employed by the Company at June 30, 2012, was 1,029.

A summary of financial data by segment and geographic area for the years ended June 30, 2012, 2011 and 2010 appears in Note J to the consolidated financial statements.

The Company's internet website address is www.twindisc.com. The Company makes available free of charge (other than an investor's own internet access charges) through its website the Company's Annual Report on Form 10-K, quarterly reports on Form 10-Q and current reports on Form 8-K, and amendments to those reports, as soon as reasonably practicable after it electronically files such material with, or furnishes such material to, the United States Securities and Exchange Commission. In addition, the Company makes available, through its website, important corporate governance materials. This information is also available from the Company upon request. The Company is not including the information contained on or available through its website as a part of, or incorporating such information by reference into, this Annual Report on Form 10-K.

ITEM 1(a). RISK FACTORS

The Company's business involves risk. The following information about these risks should be considered carefully together with other information contained in this report. The risks described below are not the only risks the Company faces. Additional risks not currently known, deemed immaterial or that could apply to any issuer may also result in adverse results for the Company's business.

As a global company, we are subject to currency fluctuations and any significant movement between the U.S. dollar and the euro, in particular, could have an adverse effect on our profitability. Although the Company's financial results are reported in U.S. dollars, a significant portion of our sales and operating costs are realized in euros and other foreign currencies. The Company's profitability is affected by movements of the U.S. dollar against the euro and the other currencies in which we generate revenues and incur expenses. Significant long-term fluctuations in relative currency values, in particular a significant change in the relative values of the U.S. dollar or euro, could have an adverse effect on our profitability and financial condition.

Certain of the Company's products are directly or indirectly used in oil exploration and oil drilling, and are thus dependent upon the strength of those markets and oil prices. In recent years, the Company has seen a significant growth in the sales of its products that are used in oil and energy-related markets. The growth in these markets has been spurred by the rise in oil prices and the global demand for oil. In addition, there has been a substantial increase in capital investment by companies in these markets. In fiscal 2009, a significant decrease in oil prices, the demand for oil and capital investment in the oil and energy markets had an adverse effect on the sales of these products and ultimately on the Company's profitability. While this market has recovered to historically high levels in fiscal 2011 and 2012, the cyclical nature of the global oil and gas market presents the ongoing possibility of a severe cutback in demand, which would create a significant adverse effect on the sales of these products and ultimately on the Company's profitability.

Many of the Company's product markets are cyclical in nature or are otherwise sensitive to volatile or variable factors. A downturn or weakness in overall economic activity or fluctuations in those other factors can have a material adverse effect on the Company's overall financial performance. Historically, sales of many of the products that the Company manufactures and sells have been subject to cyclical variations caused by changes in general economic conditions and other factors. In particular, the Company sells its products to customers primarily in the pleasure craft, commercial and military marine markets, as well as in the energy and natural resources, government and industrial markets. The demand for the products may be impacted by the strength of the economy generally, governmental spending and appropriations, including security and defense outlays, fuel prices, interest rates, as well as many other factors. Adverse economic and other conditions may cause the Company's customers to forego or otherwise postpone purchases in favor of repairing existing equipment.

In the event of an increase in the global demand for steel, the Company could be adversely affected if it experiences shortages of raw castings and forgings used in the manufacturing of its products. With the continued development of certain developing economies, in particular China and India, the global demand for steel has risen significantly in recent years. The Company selects its suppliers based on a number of criteria, and we expect that they will be able to support our growing needs. However, there can be no assurance that a significant increase in demand, capacity constraints or other issues experienced by the Company's suppliers will not result in shortages or delays in their supply of raw materials to the Company. If the Company were to experience a significant or prolonged shortage of critical components from any of its suppliers, particularly those who are sole sources, and could not procure the components from other sources, the Company would be unable to meet its production schedules for some of its key products and would miss product delivery dates which would adversely affect our sales, profitability and relationships with our customers.

If the Company were to lose business with any key customers, the Company's business would be adversely affected. Although there were no customers that accounted for 10% or more of consolidated net sales in fiscal 2012, deterioration of a business relationship with one or more of the Company's significant customers would cause its sales and profitability to be adversely affected.

The Company continues to face the prospect of increasing commodity costs, including steel, other raw materials and energy that could have an adverse effect on future profitability. To date, the Company has been successful with offsetting the effects of increased commodity costs through cost reduction programs and pricing actions. However, if material prices were to continue to increase at a rate that could not be recouped through product pricing, it could potentially have an adverse effect on our future profitability.

The termination of relationships with the Company's suppliers, or the inability of such suppliers to perform, could disrupt its business and have an adverse effect on its ability to manufacture and deliver products. The Company relies on raw materials, component parts, and services supplied by outside third parties. If a supplier of significant raw materials, component parts or services were to terminate its relationship with the Company, or otherwise cease supplying raw materials, component parts, or services consistent with past practice, the Company's ability to meet its obligations to its customers may be affected. Such a disruption with respect to numerous products, or with respect to a few significant products, could have an adverse effect on the Company's profitability and financial condition.

A significant design, manufacturing or supplier quality issue could result in recalls or other actions by the Company that could adversely affect profitability. As a manufacturer of highly engineered products, the performance, reliability and productivity of the Company's products is one of its competitive advantages. While the Company prides itself on putting in place procedures to ensure the quality and performance of its products and suppliers, a significant quality or product issue, whether due to design, performance, manufacturing or supplier quality issue, could lead to warranty actions, scrapping of raw materials, finished goods or returned products, the deterioration in a customer relation, or other action that could adversely affect warranty and quality costs, future sales and profitability.

The Company faces risks associated with its international sales and operations that could adversely affect its business, results of operations or financial condition. Sales to customers outside the United States approximated 53% of our consolidated net sales for fiscal 2012. We have international manufacturing operations in Belgium, Italy and Switzerland. In addition, we have international distribution operations in Singapore, China, Australia, Japan, Italy and Canada. Our international sales and operations are subject to a number of risks, including:

- currency exchange rate fluctuations
- export and import duties, changes to import and export regulations, and restrictions on the transfer of funds
- problems with the transportation or delivery of our products
- issues arising from cultural or language differences and labor unrest
- longer payment cycles and greater difficulty in collecting accounts receivables
- compliance with trade and other laws in a variety of jurisdictions
- changes in tax law

These factors could adversely affect our business, results of operations or financial condition.

A material disruption at the Company's manufacturing facilities in Racine, Wisconsin, could adversely affect its ability to generate sales and meet customer demand. The majority of the Company's manufacturing, based on fiscal 2012's sales, came from its two facilities in Racine, Wisconsin. If operations at these facilities were to be disrupted as a result of significant equipment failures, natural disasters, power outages, fires, explosions, adverse weather conditions or other reasons, the Company's business and results of operations could be adversely affected. Interruptions in production would increase costs and reduce sales. Any interruption in production capability could require the Company to make substantial capital expenditures to remedy the situation, which could negatively affect its profitability and financial condition. The Company maintains property damage insurance which it believes to be adequate to provide for reconstruction of its facilities and equipment, as well as business interruption insurance to mitigate losses resulting from any production interruption or shutdown caused by an insured loss. However, any recovery under this insurance policy may not offset the lost sales or increased costs that may be experienced during the disruption of operations. Lost sales may not be recoverable under the policy and long-term business disruptions could result in a loss of customers. If this were to occur, future sales levels and costs of doing business, and therefore profitability, could be adversely affected.

Any failure to meet our debt obligations and satisfy financial covenants could adversely affect our business and financial condition. Beginning in 2008 and continuing into 2010, general worldwide economic conditions experienced a downturn due to the combined effects of the subprime lending crisis, general credit market crisis, collateral effects on the finance and banking industries, slower economic activity, decreased consumer confidence, reduced corporate profits and capital spending, adverse business conditions and liquidity concerns. While some recovery has been seen in 2011 and 2012, these conditions made it difficult for customers, vendors and the Company to accurately forecast and plan future business activities, and cause U.S. and foreign businesses to slow spending on products, which delay and lengthen sales cycles. These conditions led to declining revenues in several of the Company's divisions in fiscal 2009 and 2010. The Company's amended revolving credit facility and senior notes agreements require it to maintain specified quarterly financial covenants such as a minimum consolidated net worth amount, a minimum EBITDA, as defined, for the most recent four fiscal quarters of \$11,000,000 and a funded debt to EBITDA ratio of 3.0 or less. At June 30, 2012, the Company was in compliance with these financial covenants. Based on its annual financial plan, the Company believes that it will generate sufficient EBITDA levels throughout fiscal 2013 in order to maintain compliance with its financial covenants. However, as with all forward-looking information, there can be no assurance that the Company will achieve the planned results in future periods especially due to the significant uncertainties flowing from the current economic environment. If the Company is not able to achieve these objectives and to meet the required covenants under the agreements, the Company may require forbearance from its existing lenders in the form of waivers and/or amendments of its credit facilities or be required to arrange alternative financing. Failure to obtain relief from covenant violations or to obtain alternative financing, if necessary, would have a material adverse impact on the Company.

The Company may experience negative or unforeseen tax consequences. The Company reviews the probability of the realization of our net deferred tax assets each period based on forecasts of taxable income in both the U.S. and foreign jurisdictions. This review uses historical results, projected future operating results based upon approved business plans, eligible carry-forward periods, tax planning opportunities and other relevant considerations. Adverse changes in the profitability and financial outlook in the U.S. or foreign jurisdictions may require the creation of a valuation allowance to reduce our net deferred tax assets. Such changes could result in material non-cash expenses in the period in which the changes are made and could have a material adverse impact on the Company's results of operations and financial condition.

ITEM 1B. UNRESOLVED STAFF COMMENTS

None.

ITEM 2. PROPERTIES

Manufacturing Segment

The Company owns two manufacturing, assembly and office facilities in Racine, Wisconsin, U.S.A., one in Nivelles, Belgium, two in Decima, Italy, and one in Novazzano, Switzerland. The aggregate floor space of these six plants approximates 847,000 square feet. One of the Racine facilities includes office space, which includes the Company's corporate headquarters. The Company leases additional manufacturing, assembly and office facilities in Italy (Limite sull'Arno) and India (outsourcing office in Chennai).

Distribution Segment

The Company also has operations in the following locations, all of which are leased and are used for sales offices, warehousing and light assembly or product service:

Jacksonville, Florida, U.S.A.	Chesapeake, Virginia, U.S.A.	Perth, Western Australia, Australia
Medley, Florida, U.S.A.	Rock Hill, South Carolina, U.S.A.	Limite sull'Arno, Italy
Tampa, Florida, U.S.A.	Edmonton, Alberta, Canada	Singapore
Coburg, Oregon, U.S.A.	Burnaby, British Columbia, Canada	Shanghai, China
Kent, Washington, U.S.A.	Brisbane, Queensland, Australia	Guangzhou, China

The Company believes its properties are well maintained and adequate for its present and anticipated needs.

ITEM 3. LEGAL PROCEEDINGS

Twin Disc is a defendant in several product liability or related claims of which the ultimate outcome and liability to the Company, if any, are not presently determinable. Management believes that the final disposition of such litigation will not have a material impact on the Company's results of operations, financial position or statement of cash flows.

ITEM 4. MINE SAFETY DISCLOSURES

Not applicable.

Executive Officers of the Registrant

Pursuant to General Instruction G(3) of Form 10-K, the following list is included as an unnumbered Item in Part I of this Report in lieu of being included in the Proxy Statement for the Annual Meeting of Shareholders to be held on October 19, 2012.

<u>Name</u>	<u>Position</u>	<u>Age</u>
Michael E. Batten	Chairman and Chief Executive Officer	72
John H. Batten	President and Chief Operating Officer	47
Christopher J. Eperjesy	Vice President – Finance, Chief Financial Officer and Treasurer	44
James E. Feiertag	Executive Vice President	55
Dean J. Bratel	Vice President – Engineering	48
Henri-Claude Fabry	Vice President – International Distribution	66
Denise L. Wilcox	Vice President – Human Resources	55
Jeffrey S. Knutson	Corporate Controller	47
Thomas E. Valentyn	General Counsel and Secretary	53

Officers are elected annually by the Board of Directors at the Board meeting held in conjunction with each Annual Meeting of the Shareholders. Each officer holds office until a successor is duly elected, or until he/she resigns or is removed from office.

Michael E. Batten, Chairman and Chief Executive Officer. Mr. Batten has been employed with the Company since 1970, and was named Chairman and Chief Executive Officer in 1991.

John H. Batten, President and Chief Operating Officer. Effective July 1, 2008, Mr. Batten was named President and Chief Operating Officer. Prior to this promotion, Mr. Batten served as Executive Vice President since November 2004, Vice President and General Manager – Marine and Propulsion since October 2001 and Commercial Manager – Marine and Propulsion since 1998. Mr. Batten joined Twin Disc in 1996 as an Application Engineer. Mr. Batten is the son of Mr. Michael Batten.

Christopher J. Eperjesy, Vice President – Finance, Chief Financial Officer and Treasurer. Mr. Eperjesy joined the Company in his current role in November 2002. Prior to joining Twin Disc, Mr. Eperjesy was Divisional Vice President – Financial Planning & Analysis for Kmart Corporation since 2001, and Senior Manager – Corporate Finance with DaimlerChrysler AG since 1999.

James E. Feiertag, Executive Vice President. Mr. Feiertag was appointed to his present position in October 2001. Prior to being promoted, he served as Vice President – Manufacturing since joining the Company in November 2000. Prior to joining Twin Disc, Mr. Feiertag was the Vice President of Manufacturing for the Drives and Systems Group of Rockwell Automation since 1999.

Dean J. Bratel, Vice President – Engineering. Mr. Bratel was promoted to his current role in November 2004 after serving as Director of Corporate Engineering (since January 2003), Chief Engineer (since October 2001) and Engineering Manager (since December 1999). Mr. Bratel joined Twin Disc in 1987.

Henri-Claude Fabry, Vice President – International Distribution. Mr. Fabry was appointed to his current position in January 2009, after serving as Vice President – Global Distribution since 2001. Mr. Fabry joined Twin Disc in 1997 as Director, Marketing and Sales of the Belgian subsidiary.

Denise L. Wilcox, Vice President – Human Resources. After joining the Company as Manager Compensation & Benefits in September 1998, Ms. Wilcox was promoted to Director Corporate Human Resources in March 2002 and to her current role in November 2004. Prior to joining Twin Disc, Ms. Wilcox held positions with Johnson International and Runzheimer International.

Jeffrey S. Knutson, Corporate Controller. Mr. Knutson was appointed to his current role in October 2005 after joining the Company in February 2005 as Controller of North American Operations. Prior to joining Twin Disc, Mr. Knutson held Operational Controller positions with Tower Automotive (since August 2002) and Rexnord Corporation (since November 1998).

Thomas E. Valentyn, General Counsel and Secretary. Mr. Valentyn joined the Company in his current role in September 2007. Prior to joining Twin Disc, Mr. Valentyn served as Vice President and General Counsel at Norlight Telecommunications, Inc. since July 2000.

PART II

ITEM 5. MARKET FOR THE REGISTRANT'S COMMON STOCK AND RELATED STOCKHOLDER MATTERS

The Company's common stock is traded on the NASDAQ Global Select Market under the symbol TWIN. The price information below represents the high and low sales prices from July 1, 2010 through June 30, 2012:

	Fiscal Year Ended June 30, 2012			Fiscal Year Ended June 30, 2011			
	<u>High</u>	<u>Low</u>	<u>Dividend</u>		<u>High</u>	<u>Low</u>	<u>Dividend</u>
First Quarter	\$42.82	\$25.72	\$0.08	First Quarter	\$13.95	\$10.52	\$0.07
Second Quarter	47.39	23.08	0.08	Second Quarter	30.25	12.68	0.07
Third Quarter	40.51	26.00	0.09	Third Quarter	35.10	25.24	0.08
Fourth Quarter	26.97	16.55	0.09	Fourth Quarter	39.43	29.22	0.08

For information regarding the Company's equity-based compensation plans, see the discussion under Item 12 of this report. As of August 17, 2012, shareholders of record numbered 651. The closing price of Twin Disc common stock as of August 17, 2012 was \$19.95.

TWIN DISC, INCORPORATED
ANNUAL REPORT 2012

Issuer Purchases of Equity Securities

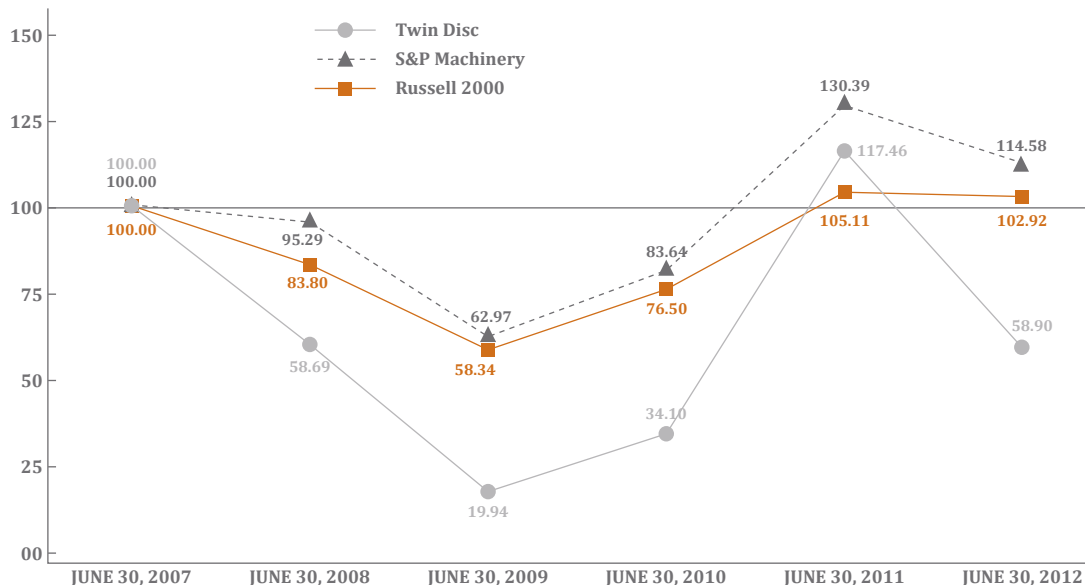
Period	(a) Total number of shares purchased	(b) Average price paid per share	(c) Total number of shares purchased as part of publicly announced plans or programs	(d) Maximum number of shares that may yet be purchased under the plans or programs
March 31, 2012–April 27, 2012	0	N/A	0	250,000
April 28, 2012–May 25, 2012	0	N/A	0	250,000
May 26, 2012–June 30, 2012	125,000	19.40	125,000	125,000
Total	125,000	19.40	125,000	125,000

On February 1, 2008, the Board of Directors authorized the purchase of up to 500,000 shares of Common Stock at market values, of which 250,000 were purchased during the second quarter of fiscal 2009. An additional 125,000 shares were purchased in open market transactions during the fourth quarter of fiscal 2012. On July 27, 2012, the Board of Directors authorized the purchase of up to an additional 375,000 shares of Common Stock at market values. This authorization has no expiration.

Performance Graph

The following table compares total shareholder return over the last 5 fiscal years to the Standard & Poor's 500 Machinery (Industrial) Index and the Russell 2000 index. The S&P 500 Machinery (Industrial) Index consists of a broad range of manufacturers. The Russell 2000 Index consists of a broad range of 2,000 companies. The Company believes, because of the similarity of its business with those companies contained in the S&P 500 Machinery (Industrial) Index, that comparison of shareholder return with this index is appropriate. Total return values for the Corporation's common stock, the S&P 500 Machinery (Industrial) Index and the Russell 2000 Index were calculated based upon an assumption of a \$100 investment on June 30, 2007, and based upon cumulative total return values assuming reinvestment of dividends on a quarterly basis.

**COMPARISON OF FIVE-YEAR CUMULATIVE TOTAL RETURN
TWIN DISC, INCORPORATED; S&P MACHINERY; AND RUSSELL 2000**



ITEM 6. SELECTED FINANCIAL DATA

Financial Highlights

(in thousands, except per share amounts)

Statement of Operations Data:	For the years ended June 30,				
	2012	2011	2010	2009	2008
Net sales	\$355,870	\$310,393	\$227,534	\$295,618	\$331,694
Net earnings attributable to Twin Disc	26,112	18,830	597	11,502	24,252
Basic earnings per share attributable to Twin Disc common shareholders	2.29	1.66	0.05	1.04	2.15
Diluted earnings per share attributable to Twin Disc common shareholders	2.26	1.64	0.05	1.03	2.13
Dividends per share	0.34	0.30	0.28	0.28	0.265
Balance Sheet Data (at end of period):					
Total assets	\$303,832	\$309,120	\$259,056	\$290,008	\$304,628
Total long-term debt	28,401	25,784	27,211	46,348	48,227

ITEM 7. MANAGEMENT'S DISCUSSION AND ANALYSIS OF FINANCIAL CONDITION AND RESULTS OF OPERATIONS

Note on Forward-Looking Statements

Statements in this report (including but not limited to certain statements in Items 1, 3 and 7) and in other Company communications that are not historical facts are forward-looking statements, which are based on management's current expectations. These statements involve risks and uncertainties that could cause actual results to differ materially from what appears here.

Forward-looking statements include the Company's description of plans and objectives for future operations and assumptions behind those plans. The words "anticipates," "believes," "intends," "estimates," and "expects," or similar anticipatory expressions, usually identify forward-looking statements. In addition, goals established by the Company should not be viewed as guarantees or promises of future performance. There can be no assurance the Company will be successful in achieving its goals.

In addition to the assumptions and information referred to specifically in the forward-looking statements, other factors, including, but not limited to those factors discussed under Item 1A, Risk Factors, could cause actual results to be materially different from what is presented in any forward looking statements.

Results of Operations

(In thousands)

	2012	%	2011	%	2010	%
Net sales	\$355,870		\$310,393		\$227,534	
Cost of goods sold	234,238		202,710		167,069	
Gross profit	121,632	34.2%	107,683	34.7%	60,465	26.6%
Marketing, engineering and administrative expenses*	73,091	20.5%	72,967	23.5%	57,380	25.2%
Impairment charge	3,670	1.0%	—	0.0%	—	0.0%
Earnings from operations	\$ 44,871	12.6%	\$ 34,716	11.2%	\$ 3,085	1.4%

* Certain amounts in the fiscal 2011 and 2010 figures have been reclassified to conform to the fiscal 2012 presentation.

See Note A for further discussion.

Fiscal 2012 Compared to Fiscal 2011

Net Sales

Net sales increased \$45.5 million, or 14.7%, in fiscal 2012. The year-over-year movement in foreign exchange rates resulted in a net favorable translation effect on sales of \$0.4 million in fiscal 2012 compared to fiscal 2011.

In fiscal 2012, sales for our worldwide manufacturing operations, before eliminating intra-segment and inter-segment sales, were higher by \$57.5 million, or 21.5%, than in the prior fiscal year. Year-over-year changes in foreign exchange rates had a net unfavorable impact on sales of \$0.6 million. In fiscal 2012, our domestic manufacturing operation saw continued growth, with a 25.9% increase in sales versus fiscal 2011. The primary driver for this increase was the sale of transmissions and related products for the North American and Asian oil and gas markets as well as increased commercial marine transmission shipments.

The Company's Italian manufacturing operations, which continued to be adversely impacted by the softness in the European megayacht market in fiscal 2012, experienced a 4.1% decrease in sales compared to the prior fiscal year. The Company's Belgian manufacturing operation saw a 28.4% increase in sales versus the prior year, although it continued to be adversely impacted by the softness in the global megayacht market. The Company's Swiss manufacturing operation, which supplies customized propellers for the global megayacht and patrol boat markets, experienced a 10.7% decrease in sales compared to the prior fiscal year, primarily due to the impact of continued softness in the global megayacht market as well as the timing of shipments for the patrol boat market.

Our distribution segment, buoyed by strong demand in Asia and the global oil and gas markets, experienced a slight increase of \$0.9 million, or 0.7%, in sales in fiscal 2012 compared to fiscal 2011's record results. Compared to fiscal 2011, on average, the Asian currencies strengthened against the U.S. dollar. The net translation effect of this on foreign distribution operations was to increase revenues for the distribution segment by approximately \$1.5 million versus the prior year, before eliminations. The Company's distribution operations in Singapore continued to experience strong demand for marine transmission products for use in various commercial applications as well as growing demand in the Asia pressure-pumping market. This operation saw a 3.2% increase in sales versus the same period a year ago, and set a new sales record. The Company's distribution operation in the Northwest of the United States and Southwest of Canada experienced a 1% decline from fiscal 2011's record levels, and continued to benefit from the strength in the Canadian oil and gas market through most of fiscal 2012. The Company's distribution operation in Italy, which provides boat accessories and propulsion systems for the pleasure craft market, saw an increase in sales of 41.3% after several years of decline due to continued weakness in the Italian megayacht market. The Company's distribution operation in Australia, which provides boat accessories, propulsion and marine transmission systems for the pleasure craft market, saw an increase in sales of 6.3%, due to improving market conditions, including sales of components parts for the Company's new Express Joystick System[®] that were shipped in fiscal 2012. The Company's joint venture in Japan, which sells large marine transmissions for commercial applications throughout Asia, experienced a decrease of nearly 25% in sales in fiscal 2012 compared to fiscal 2011. As reported in the Company's second fiscal quarter's results, the decrease was primarily a result of the impact of the Japanese tsunami on this operation, as our joint venture partner's production facility was impacted by power shortages as well as delayed shipments from suppliers. These issues were substantially resolved in the second fiscal quarter.

Net sales for the Company's largest product market, marine transmission and propulsion systems, were up 8% compared to the prior fiscal year. The majority of the growth was experienced in the second half of fiscal 2012 as the Company experienced increased demand in the global commercial marine market, which more than offset continued weakness in the global pleasure craft market. Sales of the Company's boat management systems manufactured at our Italian operation and servicing the global megayacht market, were down approximately 14% versus the prior fiscal year, as the European megayacht market continued to experience softness in demand. In the off-highway transmission market, the year-over-year increase of just over 20% can be attributed primarily to increased sales of the 8500 and 7500 transmission systems for the oil and gas markets. In addition, sales of transmission systems for the military market and vehicular transmissions were up double-digit percentages versus the prior fiscal year. The increase experienced in the Company's industrial products of roughly 34% was due to increased sales in the agriculture, mining and general industrial markets, primarily in the North American and Italian markets, as well as increased activity related to oil field markets.

Geographically, sales to the U.S. and Canada represented roughly 59% of consolidated sales for fiscal 2012 compared to 55% in fiscal 2011. This growth was primarily driven by the strength of the North American pressure-pumping market through the first three fiscal quarters of fiscal 2012 as well as growing demand in the U.S. Gulf Coast region for commercial marine transmission systems in the second half of the fiscal year. Fiscal 2012 proved to be a milestone year for our global sales, as Asia became our second largest end market, surpassing Europe. In particular, the Company experienced triple-digit growth in sales to the Chinese market. See Note J for more information on the Company's business segments and foreign operations.

The elimination for net intra-segment and inter-segment sales increased \$12.9 million, or 15.1%, from \$85.8 million in fiscal 2011 to \$98.7 million in fiscal 2012. Year-over-year changes in foreign exchange rates had a net unfavorable impact of \$0.5 million on net intra-segment and inter-segment sales.

Gross Profit

In fiscal 2012, gross profit increased \$13.9 million, or 13.0%, to \$121.6 million. Gross profit as a percentage of sales decreased 50 basis points in fiscal 2012 to 34.2%, compared to 34.7% in fiscal 2011. The table below summarizes the gross profit trend by quarter for fiscal years 2012 and 2011:

<i>Gross Profit</i> (\$ millions)	<u>1st Quarter</u>	<u>2nd Quarter</u>	<u>3rd Quarter</u>	<u>4th Quarter</u>	<u>Year</u>
2012.....	\$30.8	\$29.6	\$33.1	\$28.2	\$121.6
2011.....	\$20.0	\$23.8	\$27.8	\$36.1	\$107.7

<i>Percentage of Sales</i>					
2012.....	37.8%	35.6%	34.6%	29.4%	34.2%
2011.....	32.6%	31.6%	36.3%	37.1%	34.7%

There were a number of factors that impacted the Company's overall gross margin rate in fiscal 2012. Gross margin for the year was favorably impacted by higher volumes, favorable product mix and lower domestic pension expense, partially offset by higher material costs and surcharges, and unfavorable manufacturing absorption primarily in the fiscal fourth quarter. The Company estimates the net favorable impact of higher volumes on gross margin in fiscal 2012 was approximately \$21.7 million. The favorable shift in product mix related to the Company's oil and gas transmission business had an estimated impact of \$2.0 million. Domestic pension expense included in cost of goods sold decreased from \$1.9 million in fiscal 2011 to \$0.2 million in fiscal 2012. In addition, warranty expense as a percentage of sales decreased from 1.27% in fiscal 2011 to 1.02% in fiscal 2012 (for additional information on the Company's warranty expense, see Note F of the Notes to the Consolidated Financial Statements). The decrease in warranty expense as a percentage of sales can be attributed to an increase in volume and an overall reduction in specific warranty campaigns. In addition, the year-over-year movement in foreign exchange rates, primarily driven by movements in the euro and Asian currencies, resulted in a net favorable translation effect on gross profit of \$0.8 million in fiscal 2012 compared to fiscal 2011.

Marketing, Engineering and Administrative (ME&A) Expenses

Marketing, engineering, and administrative (ME&A) expenses remained relatively flat at \$73.1 million in fiscal 2012. As a percentage of sales, ME&A expenses decreased by 300 basis points to 20.5% in fiscal 2012, compared to 23.5% in fiscal 2011. The table below summarizes significant changes in certain ME&A expenses for the fiscal year:

<i>\$ thousands - (Income)/Expense</i>	Fiscal Year Ended		
	<u>June 30, 2012</u>	<u>June 30, 2011</u>	<u>Increase/(Decrease)</u>
Stock-Based Compensation	\$1,642	\$6,148	\$(4,506)
Severance	684	—	684
Domestic Pension Expense.....	121	975	(854)
Incentive/Bonus Expense.....	5,013	4,964	49
			(4,627)
		Foreign Currency Translation	342
			(4,285)
		All Other, Net	4,409
			<u>\$ 124</u>

The net remaining increase in ME&A expenses for the year of \$4.4 million was primarily driven by wage inflation and additional headcount, higher benefit costs, increased travel, higher project related expenses and a continued emphasis on the Company's product development program.

Impairment Charge

The Company conducted its annual assessment for goodwill impairment in the fourth quarter of fiscal 2012 by applying a fair value based test using discounted cash flow analyses, in accordance with ASC 350-10, "Intangibles - Goodwill and Other." The result of this assessment identified that one of the Company's reporting units goodwill was fully impaired, necessitating a charge of \$3.7 million. The impairment was due to a declining outlook in the global pleasure craft/megayacht market, the continued weakened European economy and few signs of significant near-term recovery in the markets served by this reporting unit. These factors were identified as the Company conducted its annual budget review process during the fourth fiscal quarter, and the Company concluded that the impairment charge was necessary in connection with the preparation of the year end financial statements during the fourth fiscal quarter. This impairment charge was not deductible for tax purposes. The fair value of the goodwill for the remaining reporting units significantly exceeds the respective carrying values.

Interest Expense

Interest expense decreased by \$0.2 million, or 14.2%, in fiscal 2012. Total interest on the Company's \$40 million revolving credit facility ("revolver") remained relatively flat at \$0.4 million in fiscal 2012. The average borrowing on the revolver, computed monthly, increased to \$20.4 million in fiscal 2012, compared to \$9.9 million in fiscal 2011. In fiscal 2011, the interest rate on the revolver remained flat at 4.00%, the rate floor, for the first eleven months of the fiscal year. In the fourth fiscal quarter of fiscal 2011, the Company entered into an amended revolver agreement that eliminated the rate floor. As of June 30, 2012, the rate on the revolver was 1.74%. Interest expense for the Company's \$25 million Senior Notes, which carry a fixed interest rate of 6.05%, decreased by \$0.2 million to \$1.0 million in fiscal 2012 due to a lower average outstanding balance during the fiscal year.

Other, Net

For the fiscal 2012 full year, Other, net improved by \$2.3 million to a current year income due primarily to favorable exchange movements relative to the euro, Swiss franc, Canadian dollar and Japanese yen.

Income Taxes

The effective tax rate for the fourth quarter of fiscal 2012 was 76.3 percent, significantly higher than the prior year fourth quarter rate of 41.4 percent. The primary factor increasing the fiscal 2012 rate was the impact of a non-deductible impairment charge of \$3.7 million, which increased the effective rate by approximately 32 percentage points. The remaining rate increase was due to a combination of reduced foreign tax credits, elimination of the R&D tax credit and additional impact of the valuation allowance related to the Company's Belgian facility. The effective tax rate for fiscal 2012 was 41.2 percent, slightly higher than the prior year rate of 40.8 percent.

The Company maintains valuation allowances when it is more likely than not that all or a portion of a deferred tax asset will not be realized. Changes in valuation allowances from period to period are included in the tax provision in the period of change. In determining whether a valuation allowance is required, the Company takes into account such factors as prior earnings history, expected future earnings, carryback and carryforward periods, and tax strategies that could potentially enhance the likelihood of realization of a deferred tax asset. During fiscal 2012, the Company continued to incur operating losses in certain foreign jurisdictions where the loss carryforward period is unlimited. The Company has evaluated the realizability of the net deferred tax assets related to these jurisdictions and concluded that based primarily upon continuing losses in these jurisdictions and failure to achieve targeted levels of improvement, a full valuation allowance continues to be necessary. Therefore, the Company recorded an additional valuation allowance of \$1.1 million. Management believes that it is more likely than not that the results of future operations will generate sufficient taxable income and foreign source income to realize the remaining deferred tax assets.

Order Rates

As of June 30, 2012, the Company's backlog of orders scheduled for shipment during the next six months (six-month backlog) was \$98.7 million, or approximately 33% lower than the six-month backlog of \$146.9 million as of June 30, 2011. The decrease in backlog is primarily a result of decreased orders by North American oil and gas customers for the Company's 8500 transmission system as rig operators adjust to the natural gas supply overhang and lower prices. In fiscal 2012, the Company began to accept orders and ship units of its new 7500 transmission for the oil and gas market. Partially offsetting the slowdown in the North American pressure-pumping market, the Company saw modest growth in the six-month backlog for commercial marine transmissions for both the U.S. Gulf Region and Asia.

Fiscal 2011 Compared to Fiscal 2010

Net Sales

Net sales increased \$82.9 million, or 36.4%, in fiscal 2011. The year-over-year movement in foreign exchange rates resulted in a net favorable translation effect on sales of \$3.2 million in fiscal 2011 compared to fiscal 2010.

In fiscal 2011, sales for our worldwide manufacturing operations, before eliminating intra-segment and inter-segment sales, were higher by \$84.3 million, or 46.0%, than in the prior fiscal year. Year-over-year changes in foreign exchange rates had a net favorable impact on sales of \$0.7 million. In fiscal 2011, our domestic manufacturing operation saw the largest growth, with a 63.8% increase in sales versus fiscal 2010. The primary driver for this increase was the sale of transmissions and related products for the oil and gas markets as well as increased aftermarket shipments. The Company's Italian manufacturing operations, which were adversely impacted by the softness in the European megayacht and industrial markets in fiscal 2009 and 2010, experienced some growth, with a 28.2% increase in sales compared to the prior fiscal year, after an extended period of decline in the second half of fiscal 2009 and throughout fiscal 2010. The Company's Belgian manufacturing operation saw an 11.8% increase in sales versus the prior year, although it continued to be adversely impacted by the softness in the global megayacht market. The Company's Swiss manufacturing operation, which supplies customized propellers for the global megayacht and patrol boat markets, experienced a 10.1% increase in sales compared to the prior fiscal year, primarily due to the impact of the strengthening Swiss franc compared to the U.S. dollar.

Our distribution segment, buoyed by continued growth in Asia and the North American oil and gas markets, experienced an increase of \$27.2 million, or 26.9%, in sales in fiscal 2011 compared to fiscal 2010. Compared to fiscal 2010, on average, the Asian currencies strengthened against the U.S. dollar. The net translation effect of this on foreign distribution operations was to increase revenues for the distribution segment by approximately \$7.8 million versus the prior year, before eliminations. The Company's distribution operations in Singapore continued to experience strong demand for marine transmission products for use in various commercial applications. This operation saw a 7.6% increase in sales versus the same period a year ago, and set a new sales record. The Company's distribution operation in the Northwest of the United States and Southwest of Canada experienced nearly a tripling of its sales due to strength in the Canadian oil and gas market. The Company's distribution operation in Italy, which provides boat accessories and propulsion systems for the pleasure craft market, saw a decrease in sales of 23.6% due to continued weakness in the Italian megayacht market. The Company's distribution operation in Australia, which provides boat accessories, propulsion and marine transmission systems for the pleasure craft market, saw an increase in sales of 26.1%, due to improving market conditions, including sales of components parts for the Company's new Express Joystick System® that were shipped in fiscal 2011.

Net sales for the Company's largest product market, marine transmission and propulsion systems, were up 9% compared to the prior fiscal year. Sales of the Company's boat management systems manufactured at our Italian operation and servicing the global megayacht market, were up approximately 12% versus the prior fiscal year. The Company saw modest recovery across most of the marine product markets it serves. In the off-highway transmission market, the year-over-year increase of just over 124% can be attributed primarily to increased sales of the 8500 transmission system for the oil and gas markets. Sales of transmission systems for the military market were up slightly over the prior fiscal year. Vehicular transmissions for the airport rescue and fire fighting (ARFF) and agricultural tractor markets were down versus fiscal 2010, however, the year-end backlog was up versus the prior fiscal year end. The increase experienced in the Company's industrial products of roughly 10% was due to increased sales in the agriculture, mining and general industrial markets, primarily in the North American and Italian markets, as well as increased activity related to oil field markets.

The elimination for net intra-segment and inter-segment sales increased \$28.6 million, or 50.1%, from \$57.2 million in fiscal 2010 to \$85.8 million in fiscal 2011. Year-over-year changes in foreign exchange rates had a net unfavorable impact of \$5.2 million on net intra-segment and inter-segment sales.

Gross Profit

In fiscal 2011, gross profit increased \$47.2 million, or 78.1%, to \$107.7 million. Gross profit as a percentage of sales increased 810 basis points in fiscal 2011 to 34.7%, compared to 26.6% in fiscal 2010. The table below summarizes the gross profit trend by quarter for fiscal years 2011 and 2010:

<i>Gross Profit (\$ millions)</i>	<u>1st Quarter</u>	<u>2nd Quarter</u>	<u>3rd Quarter</u>	<u>4th Quarter</u>	<u>Year</u>
2011.....	\$20.0	\$23.8	\$27.8	\$36.1	\$107.7
2010.....	\$ 9.7	\$14.8	\$16.5	\$19.5	\$ 60.5
<i>Percentage of Sales</i>					
2011.....	32.6%	31.6%	36.3%	37.1%	34.7%
2010.....	20.7%	26.8%	27.1%	30.2%	26.6%

There were a number of factors that impacted the Company's overall gross margin rate in fiscal 2011. Gross margin for the year was favorably impacted by higher volumes, improved product mix, the absence of extended shutdowns in the first half of the fiscal year at the Company's domestic and European manufacturing operations, which occurred in fiscal 2010, and a decrease in expenses related to the Company's defined benefit plans. In addition, warranty expense as a percentage of sales decreased from 1.63%, or \$3.7 million, in fiscal 2010 to 1.27%, or \$3.9 million, in fiscal 2011 (for additional information on the Company's warranty expense, see Note F of the Notes to the Consolidated Financial Statements). The Company estimates the net favorable impact of higher volumes on gross margin in fiscal 2011 was approximately \$36 million. The favorable shift in product mix related to the Company's oil and gas transmission business had an estimated impact of \$7 million. The decrease in warranty expense as a percentage of sales can be attributed to an increase in volume and an overall reduction in specific warranty campaigns that were experienced in fiscal 2010. In addition, the year-over-year movement in foreign exchange rates, primarily driven by movements in the euro and Asian currencies, resulted in a net favorable translation effect on gross profit of \$1.9 million in fiscal 2011 compared to fiscal 2010. Partially offsetting the above favorable items, the Company reinstated its annual incentive plan in fiscal 2011. Approximately \$1.5 million of the expense associated with the plan was recorded in cost of goods sold in fiscal 2011 compared to \$0 in fiscal 2010.

Marketing, Engineering and Administrative (ME&A) Expenses

Marketing, engineering, and administrative (ME&A) expenses increased \$15.8 million, or 27.8%, in fiscal 2011 versus fiscal 2010. Despite a significant increase in sales, and an increase in compensation related costs, as a percentage of sales, ME&A expenses decreased by 160 basis points to 23.4% in fiscal 2011, compared to 25.0% in fiscal 2010.

TWIN DISC, INCORPORATED
ANNUAL REPORT 2012

The table below summarizes significant changes in certain ME&A expenses for the fiscal year:

<i>\$ thousands – (Income)/Expense</i>	Fiscal Year Ended		Increase
	June 30, 2011	June 30, 2010	
Stock-Based Compensation	\$6,148	\$507	\$5,641
Incentive/Bonus Expense	4,964	—	4,964
			10,605
		Foreign Currency Translation	1,015
			11,620
		All Other, Net	4,207
			<u>\$15,827</u>

The net remaining increase in ME&A expenses for the year of \$4,207,000 was primarily driven by the restoration of salary and wage reductions effected in fiscal 2010, higher benefit costs, increased travel, higher project-related expenses and a continued emphasis on the Company's product development program. As announced in June 2009, the Company implemented various measures which included a reduction of annual base salaries of the Company's salaried employees including all executive officers, removal of the fiscal 2010 bonus/incentive plan, changes to several benefit programs, an across-the-board reduction of marketing, advertising, travel and entertainment expenses, and staff reductions and layoffs. The significant increase in stock-based compensation versus the prior year (\$5,641,000) was driven by the accrual for performance-based awards granted in fiscal 2011, a catch-up accrual for performance-based awards granted in fiscal 2010 and the impact of the significant increase in the Company's stock price (+340%) on the cash-based performance stock unit awards. The Company began accruing the performance-based awards granted in fiscal 2009 and 2010 at the maximum payout level in fiscal 2011 due to the strong improvement in operating results. No accrual was recorded for performance awards in fiscal 2010 due to the shortfall against performance targets, resulting in the required "catch-up" accrual for the fiscal 2010 awards. For additional information on the Company's stock-based compensation, see Note K of the Notes to the Consolidated Financial Statements.

Restructuring of Operations

During the fourth quarter of fiscal 2009, the Company recorded a pre-tax restructuring charge of \$948,000 related to a workforce reduction at its Racine, Canadian and Australian operations. The charge consisted of severance costs for 22 salaried employees and voluntary early retirement charges for an additional 16 manufacturing employees. During fiscal 2009, the Company made cash payments of \$180,000, resulting in an accrual balance at June 30, 2009, of \$767,000. The remainder of this balance was paid during fiscal 2010, resulting in no accrual balance at June 30, 2010 or 2011.

During the fourth quarter of fiscal 2007, the Company recorded a pre-tax restructuring charge of \$2,652,000 related to a workforce reduction at its Belgian operation that will allow for improved profitability through targeted outsourcing savings and additional focus on core manufacturing processes. The charge consisted of prepension costs for 32 employees: 29 manufacturing employees and 3 salaried employees. This charge was adjusted in the fourth quarter of fiscal 2008, resulting in a pre-tax benefit of \$373,000, due to final negotiations primarily related to notice period pay. Further adjustments were made in the fourth quarter of fiscal 2009 (resulting in a pre-tax expense of \$240,000 related to legally required inflationary adjustments to benefits) and fiscal 2010 (resulting in a pre-tax expense of \$342,000 primarily related to a Belgian legislation change surrounding the prepension costs and legally required inflationary adjustments). An additional adjustment was made during the fourth quarter of fiscal 2011, resulting in pre-tax expense of \$187,000 related to the annual legally required inflationary adjustments to benefits. During fiscal 2011 and 2010, the Company made cash payments of \$252,000 and \$152,000, respectively. The exchange impact in fiscal 2011 was to increase the accrual by \$413,000. Accrued restructuring costs were \$2,663,000 and \$2,315,000 at June 30, 2011 and 2010, respectively.

The Company recorded a restructuring charge of \$2,076,000 in the fourth quarter of fiscal 2005 as the Company restructured its Belgian operation to improve future profitability. The charge consists of prepension costs for 37 employees: 33 manufacturing employees and 4 salaried employees. An adjustment was made in the fourth quarter of fiscal 2010, resulting in a pre-tax expense of \$138,000 primarily related to a Belgian legislation change surrounding the prepension costs and legally required inflationary adjustments. An additional adjustment was made in the fourth quarter of fiscal 2011, resulting in pre-tax expense of \$58,000 related to the annual legally required inflationary adjustments to benefits. During fiscal 2011 and 2010, the Company made cash payments of \$220,000 and \$192,000, respectively. The exchange impact in fiscal 2011 was to increase the accrual by \$161,000. Accrued restructuring costs were \$944,000 and \$945,000 at June 30, 2011 and 2010, respectively.

Interest Expense

Interest expense decreased by \$0.5 million, or 24.7%, in fiscal 2011. Total interest on the Company's \$40 million revolving credit facility ("revolver") decreased \$0.2 million from \$0.6 million in fiscal 2010 to \$0.4 million in fiscal 2011. This decrease can be attributed to an overall decrease in the average borrowings year-over-year. The average borrowing on the revolver, computed

monthly, decreased to \$9.9 million in fiscal 2011, compared to \$14.4 million in fiscal 2010. The interest rate on the revolver remained flat at 4.00%, the rate floor, for the first eleven months of the fiscal year. In the fourth fiscal quarter of fiscal 2011, the Company entered into an amended revolver agreement that eliminated the rate floor. As of June 30, 2011, the rate on the revolver was 2.09%. Interest expense for the Company's \$25 million Senior Notes, which carries a fixed interest rate of 6.05%, decreased by \$0.2 million to \$1.2 million in fiscal 2011.

Income Taxes

The effective tax rate for fiscal 2011 of 40.8 percent is significantly lower than the prior year rate of 57.6 percent. As announced in the third fiscal quarter, the current year rate was unfavorably impacted by the recording of a valuation allowance against the net deferred tax asset at one of the Company's foreign jurisdictions, resulting in additional tax expense of approximately \$1,613,000 related to the reversal of the fiscal 2010 ending deferred tax asset, along with the absence of a tax benefit on the current year losses in this jurisdiction. This unfavorable item was partially offset by a \$794,000 benefit due to a favorable adjustment to the domestic net deferred tax asset resulting from the increase in the domestic estimated tax rate from 34.0 percent to 35.0 percent during fiscal 2011. The current year also includes the favorable impact of the reinstatement of the R&D credit, which was passed into law during the second fiscal quarter. The annualized effective rate before 2011 discrete items is 33.3 percent. The prior year rate was relatively high due to the impact of permanent deferred items, which remained relatively constant but had a greater impact on the rate due to the low base of earnings.

Order Rates

As of June 30, 2011, the Company's backlog of orders scheduled for shipment during the next six months (six-month backlog) was \$146.9 million, or approximately 74% higher than the six-month backlog of \$84.4 million as of June 30, 2010. The improvement in backlog is a result of increased orders by oil and gas customers for the Company's 8500 transmission system as stable oil and gas prices have driven demand for new high-horsepower rigs. With oil and gas prices remaining firm, the Company is optimistic demand for these transmissions will continue. In addition, the Company has begun to accept orders and has shipped initial units of its new 7500 transmission for the oil and gas market. In the second half of fiscal 2011, the Company also saw modest growth in the six-month backlog for most of its marine and industrial products.

Liquidity and Capital Resources

Fiscal Years 2012, 2011 and 2010

The net cash provided by operating activities in fiscal 2012 totaled \$14.4 million, an increase of \$0.6 million, or 4%, versus fiscal 2011. The slight increase was driven by a 39% increase in net earnings to \$26.1 million largely offset by an increase in working capital. Adjusted for the impact of foreign currency translation, net inventory increased \$9.6 million. The majority of the net increase in inventory came at the Company's North American manufacturing and distribution operations. This increase was driven by strong demand for the Company's commercial marine transmissions as well as inventory to serve the Company's North American and Asian oil and gas markets. Net inventory as a percentage of the six-month backlog increased from 67.4% as of June 30, 2011, to 104.5% as of June 30, 2012. The increase in trade accounts receivable was a result of higher sales in the second half of fiscal 2012 compared to the same period in fiscal 2011, \$191.6 million versus \$173.9 million, respectively. The decrease in trade accounts payable was due to a reduction in purchasing activity related to significant decrease in inventory in the fourth quarter of fiscal 2012 (\$14.6 million) compared to an increase in inventory in the fourth quarter of fiscal 2011 (\$5.8 million).

The net cash provided by operating activities in fiscal 2011 totaled \$13.9 million, a decrease of \$21.3 million, or 61%, versus fiscal 2010. The net decrease was driven by a net increase in working capital, primarily due to increases in net inventories and trade accounts receivable balances, partially offset by a net increase in trade accounts payable and an increase in net earnings of \$18.2 million. The majority of the net increase in inventory came at the Company's North American manufacturing and distribution operations. This increase was driven by strong demand for the Company's 8500 transmission system for the oil and gas market as well as a build-up of inventory in anticipation of the demand for the Company's new 7500 transmission. Net inventory as a percentage of the six-month backlog decreased from 86.2% as of June 30, 2010, to 67.4% as of June 30, 2011. The increase in trade accounts receivable was a result of higher sales in the second half of fiscal 2011 compared to the same period in fiscal 2010.

The net cash provided by operating activities in fiscal 2010 totaled \$35.1 million, an increase of \$23.5 million, or 203%, versus fiscal 2009. The net increase was driven by a net decrease in working capital, primarily due to decreases in net inventories and trade accounts receivable balances, partially offset by a net decrease in net earnings of \$11.1 million. The net decrease in inventory came primarily at the Company's European manufacturing locations and its distribution operation in Singapore. The decrease in trade accounts receivable was a result of lower sales in the second half of fiscal 2010 compared to the same period in fiscal 2009 as well as a continued effort to collect outstanding receivables balances globally.

The net cash used for investing activities in fiscal 2012 of \$13.9 million consisted primarily of capital expenditures for machinery and equipment at our U.S. and Belgian manufacturing operations. In fiscal 2012, the Company spent \$13.7 million for capital expenditures, up from \$12.0 million and \$4.5 million in fiscal years 2011 and 2010, respectively.

The net cash used for investing activities in fiscal 2011 of \$12.0 million consisted primarily of capital expenditures for machinery and equipment at our U.S. and Belgian manufacturing operations. In fiscal 2011, the Company spent \$12.0 million for capital expenditures, up from \$4.5 million and \$8.9 million in fiscal years 2010 and 2009, respectively.

The net cash used for investing activities in fiscal 2010 of \$4.6 million consisted primarily of capital expenditures for machinery and equipment at our U.S. and Belgian manufacturing operations, and the continuation of the global implementation of a new ERP system started in fiscal 2007. In fiscal 2010, the Company spent \$4.5 million for capital expenditures, down from \$8.9 million and \$15.0 million in fiscal years 2009 and 2008, respectively. The software costs associated with the new ERP have been substantially paid for and were capitalized in fiscal years 2007 and 2008.

In fiscal 2012, the net cash used by financing activities of \$3.5 million consisted primarily of the acquisition of treasury stock of \$2.4 million, under a Board-authorized stock repurchase program, and dividends paid to shareholders of the Company of \$3.9 million, partially offset by proceeds from long-term debt of \$2.6 million. On February 1, 2008, the Board of Directors authorized the purchase of 500,000 shares of Common Stock at market values. In fiscal 2012, the Company purchased 125,000 shares of its outstanding common stock at an average price of \$19.40 per share for a total cost of \$2.4 million.

In fiscal 2011, the net cash used by financing activities of \$4.2 million consisted primarily of payments on long-term debt of \$1.4 million and dividends paid to shareholders of the Company of \$3.4 million.

In fiscal 2010, the net cash used by financing activities of \$23.2 million consisted primarily of payments on long-term debt and dividends paid to shareholders of the Company.

Future Liquidity and Capital Resources

In December 2002, the Company entered into a \$20,000,000 revolving loan agreement with M&I Marshall & Ilsley Bank ("M&I"), which had an original expiration date of October 31, 2005. Through a series of amendments, the last of which was agreed to during the fourth quarter of fiscal 2011, the total commitment was increased to \$40,000,000 and the term was extended to May 31, 2015. This agreement contains certain covenants, including restrictions on investments, acquisitions and indebtedness. Financial covenants include a minimum consolidated net worth amount, a minimum EBITDA for the most recent four fiscal quarters of \$11,000,000 at June 30, 2012, and a maximum total funded debt to EBITDA ratio of 3.0 at June 30, 2012. As of June 30, 2012, the Company was in compliance with these covenants with a four quarter EBITDA total of \$56,789,000 and a funded debt to EBITDA ratio of 0.57. The minimum net worth covenant fluctuates based upon actual earnings and is subject to adjustment for certain pension accounting adjustments to equity. As of June 30, 2012, the minimum equity requirement was \$117,468,000 compared to an actual result of \$169,983,000 after all required adjustments. The outstanding balance under the revolving loan agreement of \$17,550,000 and \$11,300,000 at June 30, 2012 and June 30, 2011, respectively, is classified as long-term debt. In accordance with the loan agreement as amended, the Company can borrow at LIBOR plus an additional "Add-On," between 1.5% and 2.5%, depending on the Company's Total Funded Debt to EBITDA ratio. The rate was 1.74% and 2.09% at June 30, 2012 and 2011, respectively.

On April 10, 2006, the Company entered into a Note Agreement (the "Note Agreement") with The Prudential Insurance Company of America and certain other entities (collectively, "Purchasers"). Pursuant to the Note Agreement, Purchasers acquired, in the aggregate, \$25,000,000 in 6.05% Senior Notes due April 10, 2016 (the "Notes"). The Notes mature and become due and payable in full on April 10, 2016 (the "Payment Date"). Prior to the Payment Date, the Company is obligated to make quarterly payments of interest during the term of the Notes, plus prepayments of principal of \$3,571,429 on April 10 of each year from 2010 to 2015, inclusive. The outstanding balance was \$14,285,714 and \$17,857,143 at June 30, 2012 and 2011, respectively. Of the outstanding balance, \$3,571,429 was classified as a current maturity of long-term debt at June 30, 2012 and 2011, respectively. The remaining \$10,714,286 and \$14,285,714 is classified as long-term debt as of June 30, 2012 and 2011, respectively. The Company also has the option of making additional prepayments subject to certain limitations, including the payment of a Yield-Maintenance Amount as defined in the Note Agreement. In addition, the Company will be required to make an offer to purchase the Notes upon a Change of Control, as defined in the Note Agreement, and any such offer must include the payment of a Yield-Maintenance Amount. The Note Agreement includes certain financial covenants which are identical to those associated with the revolving loan agreement discussed above. The Note Agreement also includes certain restrictive covenants that limit, among other things, the incurrence of additional indebtedness and the disposition of assets outside the ordinary course of business. The Note Agreement provides that it shall automatically include any covenants or events of default not previously included in the Note Agreement to the extent such covenants or events of default are granted to any other lender of an amount in excess of \$1,000,000. Following an Event of Default, each Purchaser may accelerate all amounts outstanding under the Notes held by such party.

Four quarter EBITDA and total funded debt are non-GAAP measures, and are included herein for the purpose of disclosing the status of the Company's compliance with the four quarter EBITDA covenant and the total funded debt to four quarter EBITDA ratio covenant described above. In accordance with the Company's revolving loan agreement with M&I and the Note Agreement:

- "Four quarter EBITDA" is defined as "the sum of (i) Net Income plus, to the extent deducted in the calculation of Net Income, (ii) interest expense, (iii) depreciation and amortization expense, and (iv) income tax expense;" and

- “Total funded debt” is defined as “(i) all Indebtedness for borrowed money (including without limitation, Indebtedness evidenced by promissory notes, bonds, debentures and similar interest-bearing instruments), plus (ii) all purchase money Indebtedness, plus (iii) the principal portion of capital lease obligations, plus (iv) the maximum amount which is available to be drawn under letters of credit then outstanding, all as determined for the Company and its consolidated Subsidiaries as of the date of determination, without duplication, and in accordance with generally accepted accounting principles applied on a consistent basis.”
- “Total funded debt to four quarter EBITDA” is defined as the ratio of total funded debt to four quarter EBITDA calculated in accordance with the above definitions.

The Company’s total funded debt as of June 30, 2012 and June 30, 2011, was equal to the total debt reported on the Company’s June 30, 2012 and June 30, 2011, Consolidated Balance Sheet, and therefore no reconciliation is included herein. The following table sets forth the reconciliation of the Company’s reported Net Earnings to the calculation of four quarter EBITDA for the four quarters ended June 30, 2012:

Four Quarter EBITDA Reconciliation

Net Earnings Attributable to Twin Disc	\$26,112,000
Depreciation & Amortization	10,756,000
Interest Expense	1,475,000
Income Taxes	18,446,000
Four Quarter EBITDA	<u>\$56,789,000</u>

Total Funded Debt to Four Quarter EBITDA

Total Funded Debt	\$32,145,000
Divided by: Four Quarter EBITDA	<u>56,789,000</u>
Total Funded Debt to Four Quarter EBITDA	<u>0.57</u>

As of June 30, 2012, the Company was in compliance with all of the covenants described above. As of June 30, 2012, the Company’s backlog of orders scheduled for shipment during the next six months (six-month backlog) was \$98.7 million, or approximately 33% lower than the six-month backlog of \$146.9 million as of June 30, 2011. In spite of the decrease in order backlog driven primarily by the recent decline in the North American oil and gas market, as rig operators adjust to the natural gas supply overhang and lower prices, the Company does not expect to violate any of its financial covenants in fiscal 2013. The current margin surrounding ongoing compliance with the above covenants, in particular, minimum EBITDA for the most recent four fiscal quarters and total funded debt to EBITDA, are expected to decrease in fiscal 2013. Please see the factors discussed under Item 1(a), Risk Factors, of this Form 10-K for further discussion of this topic.

The Company’s balance sheet remains very strong, there are no off-balance-sheet arrangements other than the operating leases listed below, and we continue to have sufficient liquidity for near-term needs. The Company had \$22.5 million of available borrowings on our \$40 million revolving loan agreement as of June 30, 2012, and expects to generate enough cash from operations to meet our operating and investing needs. For the years ended June 30, 2012 and June 30, 2011, respectively, the Company generated net cash from operating activities of \$14.4 million and \$13.9 million, respectively. As of June 30, 2012, the Company also had cash of \$15.7 million, primarily at its overseas operations. These funds, with some restrictions, are available for repatriation as deemed necessary by the Company. In fiscal 2013, the Company expects to contribute \$6.5 million to its defined benefit pension plans, the minimum contributions required. However, if the Company elects to make voluntary contributions in fiscal 2013, it intends to do so using cash from operations and, if necessary, from available borrowings under existing credit facilities.

Net working capital increased \$19.0 million, or 17.1%, in fiscal 2012, and the current ratio increased from 2.3 at June 30, 2011 to 2.9 at June 30, 2012. The increase in net working capital was primarily driven by an increase in accounts receivable and inventories as a result of a significant increase in sales and orders in fiscal 2012, as well as a decrease in trade accounts payable due to the significant reduction in inventory in the fourth fiscal quarter of 2012.

Twin Disc expects capital expenditures to be between \$15 and \$20 million in fiscal 2013. These anticipated expenditures reflect the Company’s plans to continue investing in modern equipment and facilities, its global sourcing program and new products as well as expanding capacity at facilities around the world.

Management believes that available cash, the credit facility, cash generated from future operations, existing lines of credit and potential access to debt markets will be adequate to fund Twin Disc’s capital requirements for the foreseeable future.

Off Balance Sheet Arrangements and Contractual Obligations

The Company had no off-balance sheet arrangements, other than operating leases, as of June 30, 2012 and 2011.

The Company has obligations under non-cancelable operating lease contracts and loan and senior note agreements for certain future payments. A summary of those commitments follows (in thousands):

Contractual Obligations	Total	Less than 1 Year	1-3 Years	3-5 Years	After 5 Years
Revolving loan borrowing	\$17,550	—	\$17,550	—	—
Long-term debt	\$14,595	\$3,744	\$7,253	\$ 3,571	\$27
Operating leases	\$ 6,981	\$3,120	\$2,705	\$ 1,156	—

The table above does not include accrued interest of approximately \$230,000 related to the revolving loan borrowing. The table above also does not include tax liabilities for unrecognized tax benefits totaling \$560,000, excluding related interest and penalties, as the timing of their resolution cannot be estimated. See Note N of the Consolidated Financial Statements for disclosures surrounding uncertain income tax positions.

The Company maintains defined benefit pension plans for some of its operations in the United States and Europe. The Company has established the Pension Committee to oversee the operations and administration of the defined benefit plans. The Company estimates that fiscal 2012 contributions to all defined benefit plans will total \$6,479,000. As part of the pension funding provisions contained in the Surface Transportation Extension Act of 2012 passed by Congress in June 2012, Twin Disc, Inc.'s fiscal 2013 pension contributions are projected to be reduced to \$4 million from \$6 million, pending a final interest rate to be issued by the IRS.

Other Matters

Critical Accounting Policies

The preparation of this Annual Report requires management's judgment to make estimates and assumptions that affect the reported amounts of assets and liabilities, disclosure of contingent assets and liabilities at the dates of the financial statements, and the reported amounts of revenues and expenses during the reporting period. There can be no assurance that actual results will not differ from those estimates.

The Company's significant accounting policies are described in Note A to the consolidated financial statements. Not all of these significant accounting policies require management to make difficult, subjective, or complex judgments or estimates. However, the policies management considers most critical to understanding and evaluating our reported financial results are the following:

Accounts Receivable

Twin Disc performs ongoing credit evaluations of our customers and adjusts credit limits based on payment history and the customer's credit-worthiness as determined by review of current credit information. We continuously monitor collections and payments from our customers and maintain a provision for estimated credit losses based upon our historical experience and any specific customer-collection issues. In addition, senior management reviews the accounts receivable aging on a monthly basis to determine if any receivable balances may be uncollectible. Although our accounts receivable are dispersed among a large customer base, a significant change in the liquidity or financial position of any one of our largest customers could have a material adverse impact on the collectibility of our accounts receivable and future operating results.

Inventory

Inventories are valued at the lower of cost or market. Cost has been determined by the last-in, first-out (LIFO) method for the majority of the inventories located in the United States, and by the first-in, first-out (FIFO) method for all other inventories. Management specifically identifies obsolete products and analyzes historical usage, forecasted production based on future orders, demand forecasts, and economic trends when evaluating the adequacy of the reserve for excess and obsolete inventory. The adjustments to the reserve are estimates that could vary significantly, either favorably or unfavorably, from the actual requirements if future economic conditions, customer demand or competitive conditions differ from expectations.

Goodwill

In conformity with U.S. GAAP, goodwill is tested for impairment annually or more frequently if events or changes in circumstances indicate that an impairment might exist. The Company performs impairment reviews for its four reporting units using a fair-value method based on management's judgments and assumptions or third party valuations. The Company is subject to financial risk to the extent the carrying amount of a reporting unit exceeds its fair value. Based upon the goodwill impairment review completed at the end of fiscal 2012, it was determined that the goodwill for one of the Company's reporting units was fully impaired. The fair value for each of the remaining reporting units at June 30, 2012 significantly exceeded the carrying value and therefore goodwill was not impaired. See Note D for additional discussion of the fiscal 2012 impairment charge.

In determining the fair value of our reporting units, management is required to make estimates of future operating results, including growth rates, and a weighted-average cost of capital that reflects current market conditions, among others. Our development of future operating results incorporate management's best estimates of current and future economic and market conditions which are derived from a review of past results, current results and approved business plans. Many of the factors used in assessing fair value are outside the control of management, and these assumptions and estimates can change in future periods. While the Company believes its judgments and assumptions were reasonable, different assumptions, economic factors and/or market indicators could materially change the estimated fair values of the Company's reporting units and, therefore, impairment charges could be required in the future.

The following assumptions are key to our discounted cash flow model:

Business Projections – We make assumptions about the level of sales for each fiscal year including expected growth, if any. This assumption drives our planning for volumes, mix and pricing. We also make assumptions about our cost levels (e.g., capacity utilization, cost performance, etc.). These assumptions are key inputs for developing our cash flow projections. These projections are derived using our internal business plans that are reviewed annually during the annual budget process;

Discount Rates – When measuring a possible impairment, future cash flows are discounted at a rate that is consistent with a weighted average cost of capital for a potential market participant. The weighted average cost of a capital is an estimate of the overall after-tax rate of return required by equity and debt holders of a business enterprise.

Warranty

Twin Disc engages in extensive product quality programs and processes, including actively monitoring and evaluating the quality of its suppliers. However, its warranty obligation is affected by product failure rates, the extent of the market affected by the failure and the expense involved in satisfactorily addressing the situation. The warranty reserve is established based on our best estimate of the amounts necessary to settle future and existing claims on products sold as of the balance sheet date. When evaluating the adequacy of the reserve for warranty costs, management takes into consideration the term of the warranty coverage, historical claim rates and costs of repair, knowledge of the type and volume of new products and economic trends. While we believe the warranty reserve is adequate and that the judgment applied is appropriate, such amounts estimated to be due and payable in the future could differ materially from what actually transpires.

Pension and Other Postretirement Benefit Plans

The Company provides a wide range of benefits to employees and retired employees, including pensions and postretirement health care coverage. Plan assets and obligations are recorded annually based on the Company's measurement date utilizing various actuarial assumptions such as discount rates, expected return on plan assets, compensation increases, retirement and mortality tables, and health care cost trend rates as of that date. The approach used to determine the annual assumptions are as follows:

Discount Rate – based on the Hewitt Top Quartile Yield Curve at June 30, 2012, as applied to the expected payouts from the pension plans. This yield curve is made up of Corporate Bonds rated AA or better.

Expected Return on Plan Assets – based on the expected long-term average rate of return on assets in the pension funds, which is reflective of the current and projected asset mix of the funds and considers historical returns earned on the funds.

Compensation Increase – reflect the long-term actual experience, the near-term outlook and assumed inflation.

Retirement and Mortality Rates – based upon the Generational Mortality Table for fiscal 2010, 2011 and 2012.

Health Care Cost Trend Rates – developed based upon historical cost data, near-term outlook and an assessment of likely long-term trends.

Measurements of net periodic benefit cost are based on the assumptions used for the previous year-end measurements of assets and obligations. The Company reviews its actuarial assumptions on an annual basis and makes modifications to the assumptions when appropriate. As required by U.S. GAAP, the effects of the modifications are recorded currently or amortized over future periods. Based on information provided by its independent actuaries and other relevant sources, the Company believes that the assumptions used are reasonable; however, changes in these assumptions could impact the Company's financial position, results of operations or cash flows.

Income Taxes

The Company accounts for income taxes in accordance with ASC Topic 740, "Income Taxes." Deferred tax assets and liabilities are recognized for the future tax consequences attributable to differences between financial statement carrying amounts of existing assets and liabilities and their respective tax bases and operating loss and tax credit carryforwards. Deferred tax assets and liabilities are measured using enacted tax rates expected to apply to taxable income in the years in which those temporary differences are expected to be recovered or settled. The Company maintains valuation allowances when it is more likely than not that all or a portion of a deferred tax asset will not be realized. In determining whether a valuation allowance is required, the

Company takes into account such factors as prior earnings history, expected future earnings, carryback and carryforward periods, and tax strategies that could potentially enhance the likelihood of realization of a deferred tax asset. During fiscal 2012, the Company concluded that it was more likely than not that certain net deferred tax assets in foreign jurisdictions would not be realized, resulting in the recording of a valuation allowance totaling \$3,811,000.

Recently Issued Accounting Standards

In July 2012, the Financial Accounting Standards Board ("FASB") issued amended guidance that simplifies how entities test indefinite-lived intangible assets other than goodwill for impairment. After an assessment of certain qualitative factors, if it is determined to be more likely than not that an indefinite-lived asset is impaired, entities must perform the quantitative impairment test. Otherwise, the quantitative test is optional. The amended guidance is effective for annual and interim impairment tests performed for fiscal years beginning after September 15, 2012, with early adoption permitted. The adoption of this guidance is not expected to have a material impact on the company's financial results.

In September 2011, the FASB issued a standards update that is intended to simplify how entities test goodwill for impairment. This update permits an entity to first assess qualitative factors to determine whether it is "more likely than not" that the fair value of a reporting unit is less than its carrying amount as a basis for determining whether it is necessary to perform the two-step goodwill impairment test described in Accounting Standards Codification ("ASC") Topic 350 "Intangibles-Goodwill and Other." This update is effective for annual and interim goodwill impairment tests performed for fiscal years beginning after December 15, 2011 (the Company's fiscal 2013). This standards update is not expected to have a material impact on the Company's financial statements.

In June 2011, FASB issued a standards update that will allow an entity the option to present the total of comprehensive income, the components of net income, and the components of other comprehensive income either in a single continuous statement of comprehensive income or in two separate but consecutive statements. This standards update eliminates the option of presenting the components of other comprehensive income as part of the statement of changes in stockholders' equity. This update is effective for fiscal years, and interim periods within those years, beginning after December 15, 2011 (the Company's fiscal 2013). This standards update is not expected to have any impact on the Company's financial statements.

In May 2011, the FASB issued a standards update which represents the converged guidance of the FASB and the International Accounting Standards Board ("IASB") on fair value measurement. This collective effort has resulted in common requirements for measuring fair value and for disclosing information about fair value measurements, including a consistent meaning of the term "fair value." This update is to be applied prospectively effective for interim and annual periods beginning after December 15, 2011 (the Company's third fiscal quarter of 2012). This standards update did not have a material impact on the Company's financial statements.

ITEM 7(a). QUANTITATIVE AND QUALITATIVE DISCLOSURE ABOUT MARKET RISK

The Company is exposed to market risks from changes in interest rates, commodities and foreign currency exchange rates. To reduce such risks, the Company selectively uses financial instruments and other proactive management techniques. All hedging transactions are authorized and executed pursuant to clearly defined policies and procedures, which prohibit the use of financial instruments for trading or speculative purposes. Discussion of the Company's accounting policies and further disclosure relating to financial instruments is included in Note A to the consolidated financial statements.

Interest rate risk – The Company's earnings exposure related to adverse movements of interest rates is primarily derived from outstanding floating rate debt instruments that are indexed to the LIBOR interest rate. The Company currently has a \$40 million revolving loan agreement, which is due to expire on May 31, 2015. In accordance with the loan agreement as amended, the Company borrows at LIBOR plus an additional "Add-On," between 1.5% and 2.5%, depending on the Company's Total Funded Debt to EBITDA ratio. Due to the relative stability of interest rates, the Company did not utilize any financial instruments at June 30, 2012, to manage interest rate risk exposure. A 10 percent increase or decrease in the applicable interest rate would result in a change in pretax interest expense of approximately \$31,000.

Commodity price risk – The Company is exposed to fluctuation in market prices for such commodities as steel and aluminum. The Company does not utilize commodity price hedges to manage commodity price risk exposure. Direct material cost as a percent of total cost of goods sold was 53.8% for fiscal 2012.

Currency risk – The Company has exposure to foreign currency exchange fluctuations. Approximately nineteen percent of the Company's revenues in the year ended June 30, 2012, were denominated in currencies other than the U.S. dollar. Of that total, approximately 73 percent was denominated in euros with the balance comprised of Japanese yen, Swiss franc and the Australian and Singapore dollars. The Company does not hedge the translation exposure represented by the net assets of its foreign subsidiaries. Foreign currency translation adjustments are recorded as a component of shareholders' equity. Forward foreign exchange contracts are used to hedge the currency fluctuations on significant transactions denominated in foreign currencies.

Derivative financial instruments – The Company has written policies and procedures that place all financial instruments under the direction of the Company corporate treasury department and restrict derivative transactions to those intended for hedging purposes. The use of financial instruments for trading purposes is prohibited. The Company uses financial instruments to manage the market risk from changes in foreign exchange rates.

Periodically, the Company enters into forward exchange contracts to reduce the earnings and cash flow impact of non-functional currency denominated receivables and payables. These contracts are highly effective in hedging the cash flows attributable to changes in currency exchange rates. Gains and losses resulting from these contracts offset the foreign exchange gains or losses on the underlying assets and liabilities being hedged. The maturities of the forward exchange contracts generally coincide with the settlement dates of the related transactions. Gains and losses on these contracts are recorded in Other Income (Expense), net in the Consolidated Statement of Operations and Comprehensive (Loss) Income as the changes in the fair value of the contracts are recognized and generally offset the gains and losses on the hedged items in the same period. The primary currency to which the Company was exposed in fiscal 2012 and 2011 was the euro. At June 30, 2012 and 2011, the Company had no outstanding forward exchange contracts.

ITEM 8. FINANCIAL STATEMENTS AND SUPPLEMENTARY DATA

See Consolidated Financial Statements and Financial Statement Schedule.

Sales and Earnings by Quarter – Unaudited (in thousands, except per share amounts)

2012	1st Qtr.	2nd Qtr.	3rd Qtr.	4th Qtr.	Year
Net sales	\$81,330	\$82,941	\$95,490	\$96,109	\$355,870
Gross profit	30,768	29,562	33,056	28,246	121,632
Net earnings attributable to Twin Disc.....	9,581	5,857	9,393	1,281	26,112
Basic earnings per share attributable					
to Twin Disc common shareholders	0.84	0.51	0.82	0.11	2.29
Diluted earnings per share attributable					
to Twin Disc common shareholders	0.83	0.51	0.81	0.11	2.26
Dividends per share	0.08	0.08	0.09	0.09	0.34
2011	1st Qtr.	2nd Qtr.	3rd Qtr.	4th Qtr.	Year
Net sales	\$61,395	\$75,160	\$76,471	\$97,367	\$310,393
Gross profit	20,023	23,757	27,782	36,121	107,683
Net earnings attributable to Twin Disc.....	2,656	4,034	4,548	7,592	18,830
Basic earnings per share attributable					
to Twin Disc common shareholders	0.24	0.36	0.40	0.67	1.66
Diluted earnings per share attributable					
to Twin Disc common shareholders	0.24	0.35	0.40	0.66	1.64
Dividends per share	0.07	0.07	0.08	0.08	0.30

ITEM 9. CHANGE IN AND DISAGREEMENTS WITH ACCOUNTANTS ON ACCOUNTING AND FINANCIAL DISCLOSURE

None.

ITEM 9(a). CONTROLS AND PROCEDURES

Conclusion Regarding Disclosure Controls and Procedures

As required by Rules 13a-15 and 15d-15 of the Securities Exchange Act of 1934, as of the end of the period covered by this report and under the supervision and with the participation of management, including the Chief Executive Officer and the Chief Financial Officer, the Company has evaluated the effectiveness of the design and operation of its disclosure controls and procedures. Based on such evaluation, the Chief Executive Officer and Chief Financial Officer have concluded that such disclosure controls and procedures are effective to provide reasonable assurance that information required to be disclosed by the Company in the reports it files or submits under the Exchange Act is recorded, processed, summarized and reported within the time periods specified in the Securities and Exchange Commission rules and forms, and to provide reasonable assurance that information required to be disclosed by the Company in the reports it files or submits under the Exchange Act is accumulated and communicated to the Company's management, including its principal executive and principal financial officers, as appropriate, to allow timely decisions regarding disclosure.

Management's Report on Internal Control Over Financial Reporting

Management of the Company is responsible for establishing and maintaining adequate internal control over financial reporting. The Company's internal control over financial reporting is designed to provide reasonable assurance regarding the reliability of financial reporting and the preparation of financial statements for external purposes in accordance with generally accepted accounting principles. The Company's internal control over financial reporting includes those policies and procedures that:

- (i) pertain to the maintenance of records that, in reasonable detail, accurately and fairly reflect the transactions and dispositions of the Company,
- (ii) provide reasonable assurance that transactions are recorded as necessary to permit preparation of financial statements in accordance with generally accepted accounting principles, and that receipts and expenditures of the Company are being made only in accordance with authorizations of management and directors of the Company, and
- (iii) provide reasonable assurance regarding prevention or timely detection of unauthorized acquisition, use or disposition of the Company's assets that could have a material effect on financial statements.

Because of its inherent limitations, internal control over financial reporting may not prevent or detect misstatements. Also, projections of any evaluation of the effectiveness to future periods are subject to the risk that controls may become inadequate because of changes in conditions, or that the degree of compliance with the policies and procedures included in such controls may deteriorate.

The Company conducted an evaluation of the effectiveness of our internal control over financial reporting based upon the framework in Internal Control – Integrated Framework issued by the Committee of Sponsoring Organizations of the Treadway Commission (COSO). Based upon such evaluation, our management concluded that our internal control over financial reporting was effective as of June 30, 2012.

PricewaterhouseCoopers LLP, an independent registered public accounting firm, has audited the Company's consolidated financial statements included in this annual report and has issued an attestation report on the Company's internal control over financial reporting.

Changes in Internal Controls Over Financial Reporting

During the fourth quarter of fiscal 2012, there have not been any changes in the Company's internal control over financial reporting that have materially affected, or are reasonably likely to materially affect, the Company's internal control over financial reporting.

ITEM 9(b). OTHER INFORMATION

Not applicable.

PART III

ITEM 10. DIRECTORS AND EXECUTIVE OFFICERS OF THE REGISTRANT

For information with respect to the executive officers of the Registrant, see "Executive Officers of the Registrant" at the end of Part I of this report.

For information with respect to the Directors of the Registrant, see "Election of Directors" in the Proxy Statement for the Annual Meeting of Shareholders to be held October 19, 2012, which is incorporated into this report by reference.

For information with respect to compliance with Section 16(a) of the Securities Exchange Act of 1934, see "Section 16(a) Beneficial Ownership Reporting Compliance" in the Proxy Statement for the Annual Meeting of Shareholders to be held October 19, 2012, which is incorporated into this report by reference.

For information with respect to the Company's Code of Ethics, see "Guidelines for Business Conduct and Ethics" in the Proxy Statement for the Annual Meeting of Shareholders to be held October 19, 2012, which is incorporated into this report by reference. The Company's Code of Ethics, entitled, "Guidelines for Business Conduct and Ethics," is included on the Company's website, www.twindisc.com.

For information with respect to procedures by which shareholders may recommend nominees to the Company's Board of Directors, see "Selection of Nominees for the Board" in the Proxy Statement for the Annual Meeting of Shareholders to be held October 19, 2012, which is incorporated into this report by reference. There were no changes to these procedures since the Company's last disclosure relating to these procedures.

For information with respect to the Audit Committee Financial Expert, see “Director Committee Functions: Audit Committee” in the Proxy Statement for the Annual Meeting of Shareholders to be held October 19, 2012, which is incorporated into this report by reference.

For information with respect to the Audit Committee Disclosure, see “Director Committee Functions: Audit Committee” in the Proxy Statement for the Annual Meeting of Shareholders to be held October 19, 2012, which is incorporated into this report by reference.

For information with respect to the Audit Committee Membership, see “Director Committee Functions: Committee Membership” in the Proxy Statement for the Annual Meeting of Shareholders to be held October 19, 2012, which is incorporated into this report by reference.

ITEM 11. EXECUTIVE COMPENSATION

The information set forth under the captions “Executive Compensation,” “Director Compensation,” “Compensation Committee Interlocks and Insider Participation,” and “Compensation Committee Report,” in the Proxy Statement for the Annual Meeting of Shareholders to be held on October 19, 2012, is incorporated into this report by reference. Discussion in the Proxy Statement under the captions “Compensation Committee Report” is incorporated by reference but shall not be deemed “soliciting material” or to be “filed” as part of this report.

ITEM 12. SECURITY OWNERSHIP OF CERTAIN BENEFICIAL OWNERS AND MANAGEMENT

Security ownership of certain beneficial owners and management is set forth in the Proxy Statement for the Annual Meeting of Shareholders to be held on October 19, 2012, under the captions “Principal Shareholders” and “Directors and Executive Officers” and incorporated into this report by reference.

For information regarding securities authorized for issuance under equity compensation plans of the Company, see “Equity Compensation Plan Information” in the Proxy Statement for the Annual Meeting of Shareholders to be held on October 19, 2012, which is incorporated into this report by reference.

There are no arrangements known to the Registrant, the operation of which may at a subsequent date result in a change in control of the Registrant.

ITEM 13. CERTAIN RELATIONSHIPS AND RELATED TRANSACTIONS, DIRECTOR INDEPENDENCE

For information with respect to transactions with related persons and policies for the review, approval or ratification of such transactions, see “Corporate Governance – Review, Approval or Ratification of Transactions with Related Persons” in the Proxy Statement for the Annual Meeting of Shareholders to be held October 19, 2012, which is incorporated into this report by reference.

For information with respect to director independence, see “Corporate Governance – Board Independence” in the Proxy Statement for the Annual Meeting of Shareholders to be held October 19, 2012, which is incorporated into this report by reference.

ITEM 14. PRINCIPAL ACCOUNTING FEES AND SERVICES

The Company incorporates by reference the information contained in the Proxy Statement for the Annual Meeting of Shareholders to be held October 19, 2012, under the heading “Fees to Independent Registered Public Accounting Firm.”

PART IV

ITEM 15. EXHIBITS, FINANCIAL STATEMENT SCHEDULES

(a)(1) Consolidated Financial Statements

See “Index to Consolidated Financial Statements and Financial Statement Schedule”, the Report of Independent Registered Public Accounting Firm and the Consolidated Financial Statements, all of which are incorporated by reference.

(a)(2) Consolidated Financial Statement Schedule

See “Index to Consolidated Financial Statements and Financial Statement Schedule”, and the Consolidated Financial Statement Schedule, all of which are incorporated by reference.

(a)(3) Exhibits. See Exhibit Index included as the last page of this form, which is incorporated by reference.

INDEX TO CONSOLIDATED FINANCIAL STATEMENTS AND FINANCIAL STATEMENT SCHEDULE

	Page
INDEX TO CONSOLIDATED FINANCIAL STATEMENTS	
Report of Independent Registered Public Accounting Firm	40
Consolidated Balance Sheets as of June 30, 2012 and 2011	41
Consolidated Statements of Operations and Comprehensive Income (Loss) for the years ended June 30, 2012, 2011 and 2010	42
Consolidated Statements of Cash Flows for the years ended June 30, 2012, 2011 and 2010	43
Consolidated Statements of Changes in Equity for the years ended June 30, 2012, 2011 and 2010	44
Notes to Consolidated Financial Statements	45-65
INDEX TO FINANCIAL STATEMENT SCHEDULE	
Schedule II - Valuation and Qualifying Accounts	66
Schedules, other than those listed, are omitted for the reason that they are inapplicable, are not required, or the information required is shown in the financial statements or the related notes.	

REPORT OF INDEPENDENT REGISTERED PUBLIC ACCOUNTING FIRM

To the Board of Directors and Shareholders of Twin Disc, Incorporated:

In our opinion, the consolidated financial statements listed in the index appearing under Item 15(a)(1) present fairly, in all material respects, the financial position of Twin Disc, Incorporated and its subsidiaries at June 30, 2012 and June 30, 2011, and the results of their operations and their cash flows for each of the three years in the period ended June 30, 2012 in conformity with accounting principles generally accepted in the United States of America. In addition, in our opinion, the financial statement schedule listed in the index appearing under Item 15(a)(2) presents fairly, in all material respects, the information set forth therein when read in conjunction with the related consolidated financial statements. Also, in our opinion, the Company maintained, in all material respects, effective internal control over financial reporting as of June 30, 2012, based on criteria established in Internal Control – Integrated Framework issued by the Committee of Sponsoring Organizations of the Treadway Commission (COSO). The Company's management is responsible for these financial statements and financial statement schedule, for maintaining effective internal control over financial reporting and for its assessment of the effectiveness of internal control over financial reporting, included in Management's Report on Internal Control Over Financial Reporting appearing under Item 9(a). Our responsibility is to express opinions on these financial statements, on the financial statement schedule, and on the Company's internal control over financial reporting based on our integrated audits. We conducted our audits in accordance with the standards of the Public Company Accounting Oversight Board (United States). Those standards require that we plan and perform the audits to obtain reasonable assurance about whether the financial statements are free of material misstatement and whether effective internal control over financial reporting was maintained in all material respects. Our audits of the financial statements included examining, on a test basis, evidence supporting the amounts and disclosures in the financial statements, assessing the accounting principles used and significant estimates made by management, and evaluating the overall financial statement presentation. Our audit of internal control over financial reporting included obtaining an understanding of internal control over financial reporting, assessing the risk that a material weakness exists, and testing and evaluating the design and operating effectiveness of internal control based on the assessed risk. Our audits also included performing such other procedures as we considered necessary in the circumstances. We believe that our audits provide a reasonable basis for our opinions.

A company's internal control over financial reporting is a process designed to provide reasonable assurance regarding the reliability of financial reporting and the preparation of financial statements for external purposes in accordance with generally accepted accounting principles. A company's internal control over financial reporting includes those policies and procedures that (i) pertain to the maintenance of records that, in reasonable detail, accurately and fairly reflect the transactions and dispositions of the assets of the company; (ii) provide reasonable assurance that transactions are recorded as necessary to permit preparation of financial statements in accordance with generally accepted accounting principles, and that receipts and expenditures of the company are being made only in accordance with authorizations of management and directors of the company; and (iii) provide reasonable assurance regarding prevention or timely detection of unauthorized acquisition, use, or disposition of the company's assets that could have a material effect on the financial statements.

Because of its inherent limitations, internal control over financial reporting may not prevent or detect misstatements. Also, projections of any evaluation of effectiveness to future periods are subject to the risk that controls may become inadequate because of changes in conditions, or that the degree of compliance with the policies or procedures may deteriorate.



Milwaukee, Wisconsin
September 13, 2012

TWIN DISC, INCORPORATED
ANNUAL REPORT 2012

TWIN DISC, INCORPORATED AND SUBSIDIARIES
CONSOLIDATED BALANCE SHEETS

June 30, 2012 and 2011

(In thousands, except share amounts)

	<u>2012</u>	<u>2011</u>
ASSETS		
Current assets:		
Cash	\$ 15,701	\$ 20,167
Trade accounts receivable, net	63,438	61,007
Inventories, net	103,178	99,139
Deferred income taxes	3,745	3,346
Other	<u>11,099</u>	<u>11,509</u>
Total current assets	197,161	195,168
Property, plant and equipment, net	66,356	65,791
Goodwill, net	13,116	17,871
Deferred income taxes	14,335	16,480
Intangible assets, net	4,996	6,439
Other assets	<u>7,868</u>	<u>7,371</u>
	<u>\$303,832</u>	<u>\$309,120</u>
LIABILITIES and EQUITY		
Current liabilities:		
Short-term borrowings and current maturities of long-term debt	\$ 3,744	\$ 3,915
Accounts payable	23,550	38,372
Accrued liabilities	<u>39,331</u>	<u>41,673</u>
Total current liabilities	66,625	83,960
Long-term debt	28,401	25,784
Accrued retirement benefits	64,009	50,063
Deferred income taxes	3,340	4,170
Other long-term liabilities	<u>4,171</u>	<u>7,089</u>
	166,546	171,066
Twin Disc shareholders' equity:		
Preferred shares authorized: 200,000; issued: none; no par value	—	—
Common shares authorized: 30,000,000; issued: 13,099,468; no par value	12,759	10,863
Retained earnings	185,083	162,857
Accumulated other comprehensive loss	<u>(34,797)</u>	<u>(11,383)</u>
	163,045	162,337
Less treasury stock, at cost	<u>26,781</u>	<u>25,252</u>
(1,794,981 and 1,739,574 shares, respectively)		
Total Twin Disc shareholders' equity	136,264	137,085
Noncontrolling interest	<u>1,022</u>	<u>969</u>
Total equity	<u>137,286</u>	<u>138,054</u>
	<u>\$303,832</u>	<u>\$309,120</u>

The notes to consolidated financial statements are an integral part of these statements.

TWIN DISC, INCORPORATED AND SUBSIDIARIES
CONSOLIDATED STATEMENTS OF OPERATIONS AND COMPREHENSIVE INCOME (LOSS)

for the years ended June 30, 2012, 2011 and 2010

(In thousands, except per share data)	<u>2012</u>	<u>2011</u>	<u>2010</u>
Net sales	\$355,870	\$310,393	\$227,534
Cost of goods sold	234,238	202,710	167,069
Gross profit	121,632	107,683	60,465
Marketing, engineering and administrative expenses	73,091	72,967	57,380
Impairment charge	3,670	—	—
Earnings from operations	44,871	34,716	3,085
Other income (expense):			
Interest income	95	98	84
Interest expense	(1,475)	(1,719)	(2,282)
Other, net	1,265	(1,066)	835
	<u>(115)</u>	<u>(2,687)</u>	<u>(1,363)</u>
Earnings before income taxes and noncontrolling interest	44,756	32,029	1,722
Income taxes	18,446	13,064	992
Net earnings	26,310	18,965	730
Less: Net earnings attributable to noncontrolling interest	(198)	(135)	(133)
Net earnings attributable to Twin Disc	<u>\$ 26,112</u>	<u>\$ 18,830</u>	<u>\$ 597</u>
Earnings per share data:			
Basic earnings per share attributable to			
Twin Disc common shareholders	\$ 2.29	\$ 1.66	\$ 0.05
Diluted earnings per share attributable to			
Twin Disc common shareholders	2.26	1.64	0.05
Weighted average shares outstanding data:			
Basic shares outstanding	11,410	11,319	11,063
Dilutive stock awards	146	144	96
Diluted shares outstanding	<u>11,556</u>	<u>11,463</u>	<u>11,159</u>
Comprehensive income (loss):			
Net earnings	\$ 26,310	\$ 18,965	\$ 730
Foreign currency translation adjustment	(11,738)	19,272	(9,650)
Benefit plan adjustments, net	(11,690)	11,506	(6,414)
Comprehensive income (loss)	2,882	49,743	(15,334)
Comprehensive earnings attributable to noncontrolling interest	(198)	(135)	(133)
Comprehensive income (loss) attributable to Twin Disc	<u>\$ 2,684</u>	<u>\$ 49,608</u>	<u>\$(15,467)</u>

The notes to consolidated financial statements are an integral part of these statements.

TWIN DISC, INCORPORATED
ANNUAL REPORT 2012

TWIN DISC, INCORPORATED AND SUBSIDIARIES
CONSOLIDATED STATEMENTS OF CASH FLOWS

for the years ended June 30, 2012, 2011 and 2010 (in thousands)

	<u>2012</u>	<u>2011</u>	<u>2010</u>
Cash flows from operating activities:			
Net earnings	\$26,310	\$18,965	\$ 730
Adjustments to reconcile net earnings to net cash provided by operating activities:			
Depreciation and amortization	10,756	9,904	9,817
Loss on sale of plant assets	315	120	261
Impairment charge	3,670	—	—
Stock compensation expense	1,642	6,148	507
Provision (benefit) for deferred income taxes	7,486	1,354	(1,474)
Changes in operating assets and liabilities:			
Trade accounts receivable, net	(5,982)	(13,605)	8,181
Inventories, net	(9,563)	(17,258)	16,338
Other assets	(915)	(1,736)	1,177
Accounts payable	(13,279)	11,839	(191)
Accrued liabilities	(2,273)	6,713	(3,285)
Accrued/prepaid retirement benefits	<u>(3,723)</u>	<u>(8,584)</u>	<u>3,055</u>
Net cash provided by operating activities	<u>14,444</u>	<u>13,860</u>	<u>35,116</u>
Cash flows from investing activities:			
Proceeds from sale of plant assets	116	296	148
Capital expenditures	(13,733)	(12,028)	(4,456)
Other, net	<u>(293)</u>	<u>(293)</u>	<u>(293)</u>
Net cash used by investing activities	<u>(13,910)</u>	<u>(12,025)</u>	<u>(4,601)</u>
Cash flows from financing activities:			
Proceeds from notes payable	3	84	86
Payments of notes payable	(145)	(83)	(690)
Proceeds from (payments of) long-term debt	2,590	(1,405)	(18,950)
Proceeds from exercise of stock options	169	322	108
Acquisition of treasury stock	(2,425)	—	—
Dividends paid to shareholders	(3,886)	(3,411)	(3,133)
Dividends paid to noncontrolling interest	(131)	(138)	(160)
Excess tax benefits from stock compensation	535	317	(131)
Other	<u>(184)</u>	<u>136</u>	<u>(318)</u>
Net cash used by financing activities	<u>(3,474)</u>	<u>(4,178)</u>	<u>(23,188)</u>
Effect of exchange rate changes on cash	<u>(1,526)</u>	<u>3,488</u>	<u>(1,571)</u>
Net change in cash	<u>(4,466)</u>	<u>1,145</u>	<u>5,756</u>
Cash:			
Beginning of year	<u>20,167</u>	<u>19,022</u>	<u>13,266</u>
End of year	<u>\$15,701</u>	<u>\$20,167</u>	<u>\$19,022</u>
Supplemental cash flow information:			
Cash paid during the year for:			
Interest	\$ 1,507	\$ 1,520	\$ 2,092
Income taxes	13,629	10,453	2,832

The notes to consolidated financial statements are an integral part of these statements.

TWIN DISC, INCORPORATED AND SUBSIDIARIES
CONSOLIDATED STATEMENTS OF CHANGES IN EQUITY

for the years ended June 30, 2012, 2011 and 2010 (in thousands)

	Common Stock	Retained Earnings	Accumulated Other Comprehensive Income (Loss)	Treasury Stock	Non- controlling Interest	Total Equity
Balance at June 30, 2009	\$13,205	\$149,974	\$(25,935)	\$(30,256)	\$837	\$107,825
Net earnings	—	597	—	—	133	730
Translation adjustments	—	—	(9,699)	—	49	(9,650)
Benefit plan adjustments, net of tax	—	—	(6,414)	—	—	(6,414)
Cash dividends	—	(3,133)	—	—	(160)	(3,293)
Compensation expense and windfall tax benefits	329	—	—	—	—	329
Shares (acquired) issued, net	(2,867)	—	—	2,659	—	(208)
Balance at June 30, 2010	10,667	147,438	(42,048)	(27,597)	859	89,319
Net earnings	—	18,830	—	—	135	18,965
Translation adjustments	—	—	19,159	—	113	19,272
Benefit plan adjustments, net of tax	—	—	11,506	—	—	11,506
Cash dividends	—	(3,411)	—	—	(138)	(3,549)
Compensation expense and windfall tax benefits	2,219	—	—	—	—	2,219
Shares (acquired) issued, net	(2,023)	—	—	2,345	—	322
Balance at June 30, 2011	10,863	162,857	(11,383)	(25,252)	969	138,054
Net earnings	—	26,112	—	—	198	26,310
Translation adjustments	—	—	(11,724)	—	(14)	(11,738)
Benefit plan adjustments, net of tax	—	—	(11,690)	—	—	(11,690)
Cash dividends	—	(3,886)	—	—	(131)	(4,017)
Compensation expense and windfall tax benefits	2,808	—	—	—	—	2,808
Shares (acquired) issued, net	(912)	—	—	(1,529)	—	(2,441)
Balance at June 30, 2012	<u>\$12,759</u>	<u>\$185,083</u>	<u>\$(34,797)</u>	<u>\$(26,781)</u>	<u>\$1,022</u>	<u>\$137,286</u>

The notes to consolidated financial statements are an integral part of these statements.

**TWIN DISC, INCORPORATED AND SUBSIDIARIES
NOTES TO CONSOLIDATED FINANCIAL STATEMENTS****A. SIGNIFICANT ACCOUNTING POLICIES**

The following is a summary of the significant accounting policies followed in the preparation of these financial statements:

Consolidation Principles – The consolidated financial statements include the accounts of Twin Disc, Incorporated and its wholly and partially owned domestic and foreign subsidiaries. Certain foreign subsidiaries are included based on fiscal years ending May 31, to facilitate prompt reporting of consolidated accounts. The Company also has a noncontrolling interest in a Japanese joint venture, which is consolidated based upon a fiscal year ending March 31. All significant intercompany transactions have been eliminated.

Translation of Foreign Currencies – The financial statements of the Company's non-U.S. subsidiaries are translated using the current exchange rate for assets and liabilities and the weighted-average exchange rate for the year for revenues and expenses. The resulting translation adjustments are recorded as a component of accumulated other comprehensive income (loss), which is included in equity. Gains and losses from foreign currency transactions are included in earnings. Included in other income (expense) are foreign currency transaction (gains) losses of (\$1,103,000), \$1,141,000 and (\$571,000) in fiscal 2012, 2011 and 2010, respectively.

Receivables – Trade accounts receivable are stated net of an allowance for doubtful accounts of \$2,194,000 and \$2,093,000 at June 30, 2012 and 2011, respectively. The Company records an allowance for doubtful accounts provision for certain customers where a risk of default has been specifically identified as well as provisions determined on a general basis when it is believed that some default is probable and estimable but not yet clearly associated with a specific customer. The assessment of likelihood of customer default is based on a variety of factors, including the length of time the receivables are past due, the historical collection experience and existing economic conditions. Various factors may adversely impact our customer's ability to access sufficient liquidity and capital to fund their operations and render the Company's estimation of customer defaults inherently uncertain. While the Company believes current allowances for doubtful accounts are adequate, it is possible that these factors may cause higher levels of customer defaults and bad debt expense in future periods.

Fair Value of Financial Instruments – The carrying amount reported in the consolidated balance sheets for cash, trade accounts receivable, accounts payable and short term borrowings approximate fair value because of the immediate short-term maturity of these financial instruments. The fair value of the Company's 6.05% Senior Notes due April 10, 2016, was approximately \$15,768,000 and \$19,589,000 at June 30, 2012 and 2011, respectively. The fair value of the Senior Notes is estimated by discounting the future cash flows at rates offered to the Company for similar debt instruments of comparable maturities. This rate was represented by the US Treasury Three-Year Yield Curve Rate (0.41% and 0.81% for fiscal 2012 and 2011, respectively), plus the current add-on related to the Company's revolving loan agreement (1.50% and 2.00% for fiscal 2012 and 2011, respectively) resulting in a total rate of 1.91% and 2.81% for fiscal 2012 and 2011, respectively. See Note G, "Debt" for the related book value of this debt instrument. The Company's revolving loan agreement approximates fair value at June 30, 2012. If measured at fair value in the financial statements, long-term debt (including the current portion) would be classified as Level 2 in the fair value hierarchy, as described in Note M.

Derivative Financial Instruments – The Company has written policies and procedures that place all financial instruments under the direction of the Company's corporate treasury and restricts all derivative transactions to those intended for hedging purposes. The use of financial instruments for trading purposes is prohibited. The Company uses financial instruments to manage the market risk from changes in foreign exchange rates.

Periodically, the Company enters into forward exchange contracts to reduce the earnings and cash flow impact of non-functional currency denominated receivables and payables. These contracts are highly effective in hedging the cash flows attributable to changes in currency exchange rates. Gains and losses resulting from these contracts offset the foreign exchange gains or losses on the underlying assets and liabilities being hedged. The maturities of the forward exchange contracts generally coincide with the settlement dates of the related transactions. Gains and losses on these contracts are recorded in other income (expense) as the changes in the fair value of the contracts are recognized and generally offset the gains and losses on the hedged items in the same period. The primary currency to which the Company was exposed in fiscal 2012 and 2011 was the euro. At June 30, 2012 and 2011, the Company had no outstanding forward exchange contracts.

Inventories – Inventories are valued at the lower of cost or market. Cost has been determined by the last in, first out (LIFO) method for the majority of inventories located in the United States, and by the first in, first out (FIFO) method for all other inventories. Management specifically identifies obsolete products and analyzes historical usage, forecasted production based on future orders, demand forecasts, and economic trends, among others, when evaluating the adequacy of the reserve for excess and obsolete inventory.

Property, Plant and Equipment and Depreciation – Assets are stated at cost. Expenditures for maintenance, repairs and minor renewals are charged against earnings as incurred. Expenditures for major renewals and betterments are capitalized and depreciated. Depreciation is provided on the straight line method over the estimated useful lives of the assets for financial reporting and on accelerated methods for income tax purposes. The lives assigned to buildings and related improvements range from 10 to 40 years, and the lives assigned to machinery and equipment range from 5 to 15 years. Upon disposal of property, plant and equipment, the cost of the asset and the related accumulated depreciation are removed from the accounts and the resulting gain or loss is reflected in earnings. Fully depreciated assets are not removed from the accounts until physically disposed.

Impairment of Long-lived Assets – The Company reviews long-lived assets for impairment whenever events or changes in business circumstances indicate that the carrying amount of the assets may not be fully recoverable. For property, plant and equipment and other long-lived assets, excluding indefinite-lived intangible assets, the Company performs undiscounted operating cash flow analyses to determine if an impairment exists. If an impairment is determined to exist, any related impairment loss is calculated based on fair value.

Revenue Recognition – Revenue is recognized by the Company when all of the following criteria are met: persuasive evidence of an arrangement exists; delivery has occurred and ownership has transferred to the customer; the price to the customer is fixed or determinable; and collectability is reasonably assured. Revenue is recognized at the time product is shipped to the customer, except for certain domestic shipments to overseas customers where revenue is recognized upon receipt by the customer. A significant portion of our consolidated net sales is transacted through a third party distribution network. Sales to third party distributors are subject to the revenue recognition criteria described above. Goods sold to third party distributors are subject to an annual return policy, for which a provision is made at the time of shipment based upon historical experience.

Goodwill and Other Intangibles – Goodwill and other indefinite-lived intangible assets, primarily tradenames, are tested for impairment at least annually on the last day of the Company's fiscal year and more frequently if an event occurs which indicates the asset may be impaired in accordance with the ASC Topic 350-10, "Intangibles – Goodwill and Other." If applicable, goodwill and other indefinite-lived intangible assets not subject to amortization have been assigned to reporting units for purposes of impairment testing based upon the relative fair value of the asset to each reporting unit.

A significant amount of judgment is involved in determining if an indicator of impairment has occurred. Such indicators may include, among others: a significant decline in expected future cash flows; a sustained, significant decline in the Company's stock price and market capitalization; a significant adverse change in legal factors or in the business climate; unanticipated competition; the testing for recoverability of a significant asset group within a reporting unit; and slower growth rates. Any adverse change in these factors could have a significant impact on the recoverability of these assets and could have a material impact on the Company's consolidated financial statements.

Impairment of goodwill is measured according to a two step approach. In the first step, the fair value of a reporting unit, as defined, is compared to the carrying value of the reporting unit, including goodwill. The fair value is primarily determined using discounted cash flow analyses; however, other methods may be used to substantiate the discounted cash flow analyses, including third party valuations when necessary. For purposes of the June 30, 2012, impairment analysis, the Company has utilized discounted cash flow analyses. If the carrying amount exceeds the fair value, the second step of the goodwill impairment test is performed to measure the amount of the impairment loss, if any. In the second step, the implied value of the goodwill is estimated as the fair value of the reporting unit less the fair value of all other tangible and identifiable intangible assets of the reporting unit. If the carrying amount of the goodwill exceeds the implied fair value of the goodwill, an impairment loss is recognized in an amount equal to that excess, not to exceed the carrying amount of the goodwill.

Based upon the goodwill impairment review completed in conjunction with the preparation of the annual financial statements at the end of fiscal 2012, which incorporates management's best estimates of economic and market conditions over the projected period and a weighted-average cost of capital that reflects current market conditions, it was determined that the goodwill for one of the Company's reporting units was fully impaired. The fair value of goodwill for each of the remaining reporting units significantly exceeded the carrying value and therefore goodwill was not impaired. See Note D for additional discussion of the fiscal 2012 impairment charge.

The fair value of the Company's other intangible assets with indefinite lives, primarily tradenames, is estimated using the relief-from-royalty method, which requires assumptions related to projected revenues; assumed royalty rates that could be payable if the Company did not own the asset; and a discount rate. The Company completed the impairment testing of indefinite-lived intangibles as of June 30, 2012, and concluded there were no impairments.

Changes in circumstances, existing at the measurement date or at other times in the future, or in the numerous estimates associated with management's judgments, assumptions and estimates made in assessing the fair value of goodwill and other intangibles, could result in an impairment charge in the future. The Company will continue to monitor all significant estimates and impairment indicators, and will perform interim impairment reviews as necessary.

Deferred Taxes – The Company recognizes deferred tax liabilities and assets for the expected future income tax consequences of events that have been recognized in the Company’s financial statements. Under this method, deferred tax liabilities and assets are determined based on the temporary differences between the financial statement carrying amounts and the tax bases of assets and liabilities using enacted tax rates in effect in the years in which temporary differences are expected to reverse. Valuation allowances are provided for deferred tax assets where it is considered more likely than not that the Company will not realize the benefit of such assets.

Management Estimates – The preparation of financial statements in conformity with generally accepted accounting principles requires management to make estimates and assumptions that affect the reported amounts of assets and liabilities and disclosure of contingent liabilities at the dates of the financial statements and the reported amounts of revenues and expenses during the reporting periods. Actual amounts could differ from those estimates.

Shipping and Handling Fees and Costs – The Company records revenue from shipping and handling costs in net sales. The cost associated with shipping and handling of products is reflected in cost of goods sold.

Reclassification – Certain amounts in the 2011 and 2010 consolidated statements of operations have been reclassified to conform to the presentation in the fiscal 2012 financial statements. Specifically, the amounts identified as restructuring for the years ended June 30, 2011 and 2010 (\$254,000 and \$494,000, respectively) have been reclassified into the Marketing, engineering and administrative expenses line item. These same amounts were reclassified from the Restructuring of operations line to the Accrued liabilities line within the operating section of the consolidated statement of cash flows. In addition, \$2,419,000 has been reclassified from the current portion of Deferred income taxes to Other current assets on the fiscal 2011 consolidated balance sheets. Finally, the amounts classified as Excess tax benefits from stock compensation on the consolidated statement of cash flows for fiscal 2011 and 2010 (\$317,000 and (\$131,000), respectively) have been reclassified from Other financing activities.

Recently Issued Accounting Standards

In July 2012, the Financial Accounting Standards Board (“FASB”) issued amended guidance that simplifies how entities test indefinite-lived intangible assets other than goodwill for impairment. After an assessment of certain qualitative factors, if it is determined to be more likely than not that an indefinite-lived asset is impaired, entities must perform the quantitative impairment test. Otherwise, the quantitative test is optional. The amended guidance is effective for annual and interim impairment tests performed for fiscal years beginning after September 15, 2012, with early adoption permitted. The adoption of this guidance is not expected to have a material impact on the company’s financial results.

In September 2011, the FASB issued a standards update that is intended to simplify how entities test goodwill for impairment. This update permits an entity to first assess qualitative factors to determine whether it is “more likely than not” that the fair value of a reporting unit is less than its carrying amount as a basis for determining whether it is necessary to perform the two-step goodwill impairment test described in ASC Topic 350 “Intangibles-Goodwill and Other.” This update is effective for annual and interim goodwill impairment tests performed for fiscal years beginning after December 15, 2011 (the Company’s fiscal 2013). This standards update is not expected to have a material impact on the Company’s financial statements.

In June 2011, FASB issued a standards update that will allow an entity the option to present the total of comprehensive income, the components of net income, and the components of other comprehensive income either in a single continuous statement of comprehensive income or in two separate but consecutive statements. This standards update eliminates the option of presenting the components of other comprehensive income as part of the statement of changes in stockholders’ equity. This update is effective for fiscal years, and interim periods within those years, beginning after December 15, 2011 (the Company’s fiscal 2013). This standards update is not expected to have any impact on the Company’s financial statements.

In May 2011, the FASB issued a standards update which represents the converged guidance of the FASB and the International Accounting Standards Board (“IASB”) on fair value measurement. This collective effort has resulted in common requirements for measuring fair value and for disclosing information about fair value measurements, including a consistent meaning of the term “fair value.” This update is to be applied prospectively effective for interim and annual periods beginning after December 15, 2011 (the Company’s third fiscal quarter of 2012). This standards update did not have a material impact on the Company’s financial statements.

B. INVENTORIES

The major classes of inventories at June 30 were as follows (in thousands):

	<u>2012</u>	<u>2011</u>
Finished parts	\$62,909	\$56,074
Work-in-process	16,608	18,561
Raw materials	23,661	24,504
	<u>\$103,178</u>	<u>\$99,139</u>

Inventories stated on a LIFO basis represent approximately 33% and 32% of total inventories at June 30, 2012 and 2011, respectively. The approximate current cost of the LIFO inventories exceeded the LIFO cost by \$23,970,000 and \$23,020,000 at June 30, 2012 and 2011, respectively. The Company reserves for inventory obsolescence of \$6,728,000 and \$6,219,000 at June 30, 2012 and 2011, respectively.

C. PROPERTY, PLANT AND EQUIPMENT

Property, plant and equipment at June 30 were as follows (in thousands):

	<u>2012</u>	<u>2011</u>
Land	\$ 4,195	\$ 4,445
Buildings	42,470	42,279
Machinery and equipment	139,908	139,526
	186,573	186,250
Less: accumulated depreciation	120,217	120,459
	<u>\$66,356</u>	<u>\$65,791</u>

Depreciation expense for the years ended June 30, 2012, 2011 and 2010 was \$9,947,000, \$9,110,000 and \$9,021,000, respectively.

D. GOODWILL AND OTHER INTANGIBLES

The changes in the carrying amount of goodwill, substantially all of which is allocated to the manufacturing segment, for the years ended June 30, 2012 and 2011, were as follows (in thousands):

Balance at June 30, 2010	\$16,440
Translation adjustment	1,431
Balance at June 30, 2011	17,871
Impairment charge	(3,670)
Translation adjustment	(1,085)
Balance at June 30, 2012	<u>\$13,116</u>

The Company conducted its annual assessment for goodwill impairment in the fourth quarter of fiscal 2012 by applying a fair value based test using discounted cash flow analyses, in accordance with ASC 350-10, "Intangibles - Goodwill and Other." The result of this assessment identified that one of the Company's reporting units goodwill was fully impaired, necessitating a non-cash charge of \$3,670,000. The impairment was due to a declining outlook in the global pleasure craft/megayacht market, the weakened European economy, few signs of significant near-term recovery in the markets served by this reporting unit and the heightened economic risk profile of this Italian reporting unit as of June 30, 2012. These factors were identified as the Company conducted its annual budget review process during the fourth fiscal quarter, and the Company concluded that the impairment charge was necessary in connection with the preparation of the year-end financial statements. The fair value of the goodwill for the remaining reporting units exceeds the respective carrying values.

TWIN DISC, INCORPORATED
ANNUAL REPORT 2012

At June 30, the following acquired intangible assets have defined useful lives and are subject to amortization (in thousands):

	<u>2012</u>	<u>2011</u>
Licensing agreements.....	\$3,015	\$ 3,015
Non-compete agreements.....	2,050	2,050
Other.....	5,991	5,991
	<u>11,056</u>	<u>11,056</u>
Accumulated amortization.....	(8,583)	(7,774)
Translation adjustment.....	469	817
Total.....	<u>\$2,942</u>	<u>\$4,099</u>

The weighted average remaining useful life of the intangible assets included in the table above is approximately 6 years.

Intangible amortization expense for the years ended June 30, 2012, 2011 and 2010 was \$809,000, \$794,000 and \$796,000, respectively. Estimated intangible amortization expense for each of the next five fiscal years is as follows (in thousands):

Fiscal Year	
2013.....	\$ 699
2014.....	699
2015.....	407
2016.....	272
2017.....	268
Thereafter.....	597
	<u>\$2,942</u>

The gross carrying amount of the Company's intangible assets that have indefinite lives and are not subject to amortization as of June 30, 2012 and 2011, are \$2,054,000 and \$2,340,000, respectively. These assets are comprised of acquired tradenames.

E. ACCRUED LIABILITIES

Accrued liabilities at June 30 were as follows (in thousands):

	<u>2012</u>	<u>2011</u>
Salaries and wages.....	\$16,190	\$13,976
Retirement benefits.....	4,163	4,483
Warranty.....	3,764	4,503
Customer advances/deferred revenue.....	4,206	7,566
Accrued income tax.....	584	4,350
Other.....	10,424	6,795
	<u>\$39,331</u>	<u>\$41,673</u>

F. WARRANTY

The Company warrants all assembled products and parts (except component products or parts on which written warranties are issued by the respective manufacturers thereof and are furnished to the original customer, as to which the Company makes no warranty and assumes no liability) against defective materials or workmanship. Such warranty generally extends from periods ranging from 12 months to 24 months. The Company engages in extensive product quality programs and processes, including actively monitoring and evaluating the quality of its suppliers. However, its warranty obligation is affected by product failure rates, the number of units affected by the failure and the expense involved in satisfactorily addressing the situation. The warranty reserve is established based on our best estimate of the amounts necessary to settle future and existing claims on products sold as of the balance sheet date. When evaluating the adequacy of the reserve for warranty costs, management takes into consideration the term of the warranty coverage, historical claim rates and costs of repair, knowledge of the type and volume of new products and economic trends. While we believe the warranty reserve is adequate and that the judgment applied is appropriate, such amounts estimated to be due and payable in the future could differ materially from what actually transpires.

The following is a listing of the activity in the warranty reserve during the years ended June 30 (in thousands):

	<u>2012</u>	<u>2011</u>
Reserve balance, July 1	\$6,022	\$6,061
Current period expense	3,633	3,927
Payments or credits to customers	(3,623)	(4,440)
Translation	<u>(287)</u>	<u>474</u>
Reserve balance, June 30	<u>\$5,745</u>	<u>\$6,022</u>

The current portion of the warranty accrual (\$3,764,000 and \$4,503,000 for fiscal 2012 and 2011, respectively) is reflected in accrued liabilities, while the long-term portion (\$1,981,000 and \$1,519,000 for fiscal 2012 and 2011, respectively) is included in other long-term liabilities on the Consolidated Balance Sheets.

G. DEBT

Notes Payable

Notes payable consists of amounts borrowed under unsecured line of credit agreements. These lines of credit may be withdrawn at the option of the banks. The following is aggregate borrowing information at June 30 (in thousands):

	<u>2012</u>	<u>2011</u>
Available credit lines	\$3,495	\$2,733
Unused credit lines	<u>3,495</u>	<u>2,733</u>
Outstanding credit lines	—	—
Notes payable – other	—	—
Total notes payable	<u>\$ 0</u>	<u>\$ 0</u>
Weighted-average interest rates on credit lines	2.9%	4.5%

Long-Term Debt

Long-term debt consisted of the following at June 30 (in thousands):

	<u>2012</u>	<u>2011</u>
Revolving loan agreement	\$17,550	\$11,300
10-year unsecured senior notes	14,286	17,857
Secured long-term debt	66	84
Capital lease obligations	7	19
Other long-term debt	<u>236</u>	<u>439</u>
Subtotal	32,145	29,699
Less: current maturities	<u>(3,744)</u>	<u>(3,915)</u>
Total long-term debt	<u>\$28,401</u>	<u>\$25,784</u>

The Company has a revolving loan agreement with M&I Marshall & Ilsley Bank (“M&I”). During the fourth quarter of fiscal 2011, the total commitment was increased to \$40,000,000 from \$35,000,000 and the term was extended to May 31, 2015. The outstanding balance of \$17,550,000 and \$11,300,000 at June 30, 2012 and 2011, respectively, is classified as long-term debt. In accordance with the loan agreement, as amended, the Company can borrow at LIBOR plus an additional “Add-On,” between 1.5% and 2.5%, depending on the Company’s total funded debt to EBITDA ratio. The rate was 1.74% and 2.09% at June 30, 2012 and 2011, respectively. This agreement contains certain covenants, including restrictions on investments, acquisitions and indebtedness. Financial covenants include a minimum consolidated net worth amount, as defined, a minimum EBITDA for the most recent four fiscal quarters, and a maximum total funded debt to EBITDA ratio. As of June 30, 2012, the Company was in compliance with these covenants. Based on its annual financial plan, the Company believes it is well positioned to generate sufficient EBITDA levels throughout fiscal 2013 in order to maintain compliance with the above covenants. However, as with all forward-looking information, there can be no assurance that the Company will achieve the planned results in future periods due to the uncertainties in certain of its markets.

On April 10, 2006, the Company entered into a Note Agreement (the "Note Agreement") with The Prudential Insurance Company of America and certain other entities (collectively, "Purchasers"). Pursuant to the Note Agreement, Purchasers acquired, in the aggregate, \$25,000,000 in 6.05% Senior Notes due April 10, 2016 (the "Notes"). The Notes mature and become due and payable in full on April 10, 2016 (the "Payment Date"). Prior to the Payment Date, the Company is obligated to make quarterly payments of interest during the term of the Notes, plus prepayments of principal of \$3,571,429 on April 10 of each year from 2010 to 2015, inclusive. The Company also has the option of making additional prepayments subject to certain limitations, including the payment of a Yield-Maintenance Amount as defined in the Note Agreement. In addition, the Company will be required to make an offer to purchase the Notes upon a Change of Control, as defined in the Note Agreement, and any such offer must include the payment of a Yield-Maintenance Amount. The Note Agreement includes certain financial covenants which are identical to those associated with the revolving loan agreement discussed above. The Note Agreement also includes certain restrictive covenants that limit, among other things, the incurrence of additional indebtedness and the disposition of assets outside the ordinary course of business. The Note Agreement provides that it shall automatically include any covenants or events of default not previously included in the Note Agreement to the extent such covenants or events of default are granted to any other lender of an amount in excess of \$1,000,000. Following an Event of Default, each Purchaser may accelerate all amounts outstanding under the Notes held by such party. As of June 30, 2012, the Company was in compliance with these covenants.

The aggregate scheduled maturities of outstanding long-term debt obligations in subsequent years are as follows (in thousands):

Fiscal Year	
2013	\$ 3,744
2014	3,682
2015	21,121
2016	3,571
2017	—
Thereafter	27
	<u>\$32,145</u>

H. LEASE COMMITMENTS

Approximate future minimum rental commitments under noncancellable operating leases are as follows (in thousands):

Fiscal Year	
2013	\$3,120
2014	1,609
2015	1,096
2016	596
2017	560
Thereafter	0
	<u>\$6,981</u>

Total rent expense for operating leases approximated \$3,657,000, \$4,103,000 and \$3,989,000 in fiscal 2012, 2011 and 2010, respectively.

I. SHAREHOLDERS' EQUITY

The total number of shares of common stock outstanding at June 30, 2012, 2011 and 2010, was 11,304,487, 11,359,894 and 11,198,226, respectively. At June 30, 2012 and 2011, treasury stock consisted of 1,794,981 and 1,739,574 shares of common stock, respectively. The Company issued 69,593 and 161,668 shares of treasury stock in fiscal 2012 and 2011, respectively, to fulfill its obligations under the stock option plans and restricted stock grants. The difference between the cost of treasury shares and the option price is recorded in common stock.

On February 1, 2008, the Board of Directors authorized the purchase of 500,000 shares of Common Stock at market values. In fiscal 2012, the Company purchased 125,000 shares of its outstanding common stock at an average price of \$19.40 per share for a total cost of \$2,425,000. In fiscal 2009, the Company purchased 250,000 shares of its outstanding common stock at an average price of \$7.25 per share for a total cost of \$1,812,500. On July 27, 2012, the Board of Directors authorized the purchase of an additional 375,000 shares of Common Stock at market values. This authorization has no expiration.

Cash dividends per share were \$0.34, \$0.30 and \$0.28 in fiscal 2012, 2011 and 2010, respectively.

Effective June 30, 2008, the Company's Board of Directors established a Shareholder Rights Plan and distributed to shareholders one preferred stock purchase right (a "Right") for each outstanding share of common stock. This Shareholder Rights Plan was amended on May 1, 2012. Under certain circumstances, a Right can be exercised to purchase one four hundredth of a share of Series A Junior Preferred Stock at an exercise price of \$125, subject to certain anti dilution adjustments. The Rights will become exercisable on the earlier of: (i) ten business days following a public announcement that a person or group of affiliated or associated persons (an "Acquiring Person") has acquired, or obtained the right to acquire from shareholders, beneficial ownership of 20% or more of the outstanding Company's common stock (or 30% or more in the case of any person or group which currently owns 20% or more of the shares or who shall become the beneficial owner of 20% or more of the shares as a result of any transfer by reason of the death of or by gift from any other person who is an affiliate or an associate of such existing holder or by succeeding such a person as trustee of a trust existing on the Record Date ("Existing Holder")) or (ii) ten business days following the commencement of a tender offer or exchange offer that would result in a person or group beneficially owning 20% or more of such outstanding Common Stock (or 30% or more for an Existing Holder), as such periods may be extended pursuant to the Rights Agreement. In the event that any person or group becomes an Acquiring Person, each holder of a Right shall thereafter have the right to receive, upon exercise, in lieu of Preferred Stock, common stock of the Company having a value equal to two times the exercise price of the Right. However, Rights are not exercisable as described in this paragraph until such time as the Rights are no longer redeemable by the Company as set forth below. Notwithstanding any of the foregoing, if any person becomes an Acquiring Person all Rights that are, or (under certain circumstances specified in the Rights Agreement) were, beneficially owned by an Acquiring Person will become null and void.

The Rights will expire at the close of business on June 30, 2018, unless earlier redeemed or exchanged by the Company. At any time before a person becomes an Acquiring Person, the Company may redeem the Rights in whole, but not in part, at a price of \$.01 per Right, appropriately adjusted to reflect any stock split, stock dividend or similar transaction occurring after the date hereof. Immediately upon the action of the Board of Directors ordering redemption of the Rights, the Rights will terminate and the only right of the holders of Rights will be to receive the \$.01 redemption price.

The Company is authorized to issue 200,000 shares of preferred stock, none of which have been issued. The Company has designated 150,000 shares of the preferred stock for the purpose of the Shareholder Rights Plan.

The components of accumulated other comprehensive loss included in equity as of June 30, 2012 and 2011, are as follows (in thousands):

	<u>2012</u>	<u>2011</u>
Translation adjustments	\$ 16,373	\$ 28,097
Benefit plan adjustments, net of income taxes of \$29,404 and \$22,635, respectively	<u>(51,170)</u>	<u>(39,480)</u>
Accumulated other comprehensive loss.....	<u>\$(34,797)</u>	<u>\$(11,383)</u>

J. BUSINESS SEGMENTS AND FOREIGN OPERATIONS

The Company and its subsidiaries are engaged in the manufacture and sale of marine and heavy duty off-highway power transmission equipment. Principal products include marine transmissions, surface drives, propellers and boat management systems, as well as power-shift transmissions, hydraulic torque converters, power take-offs, industrial clutches and controls systems. The Company sells to both domestic and foreign customers in a variety of market areas, principally pleasure craft, commercial and military marine markets, as well as in the energy and natural resources, government and industrial markets.

The Company has two reportable segments: manufacturing and distribution. These segments are managed separately because each provides different services and requires different technology and marketing strategies. The accounting practices of the segments are the same as those described in the summary of significant accounting policies. Transfers among segments are at established inter-company selling prices. Management evaluates the performance of its segments based on net earnings.

Information about the Company's segments is summarized as follows (in thousands):

2012	Manufacturing	Distribution	Total
Net sales	\$325,174	\$129,411	\$454,585
Intra-segment sales	16,189	7,672	23,861
Inter-segment sales	71,134	3,720	74,854
Interest income	688	39	727
Interest expense	3,798	64	3,862
Income taxes	20,075	2,460	22,535
Depreciation and amortization	8,373	871	9,244
Net earnings	28,941	7,196	36,137
Assets	272,098	58,275	330,373
Expenditures for segment assets	11,821	1,158	12,979
2011			
Net sales	\$267,630	\$128,559	\$396,189
Intra-segment sales	12,712	13,289	26,001
Inter-segment sales	56,159	3,636	59,795
Interest income	856	34	890
Interest expense	4,168	66	4,234
Income taxes	18,565	3,233	21,798
Depreciation and amortization	7,605	834	8,439
Net earnings	25,983	6,759	32,742
Assets	271,454	54,028	325,482
Expenditures for segment assets	11,293	334	11,627
2010			
Net sales	\$183,369	\$101,337	\$284,706
Intra-segment sales	10,752	12,990	23,742
Inter-segment sales	29,715	3,715	33,430
Interest income	979	21	1,000
Interest expense	4,795	75	4,870
Income taxes	1,475	2,412	3,887
Depreciation and amortization	7,537	873	8,410
Net earnings	400	5,079	5,479
Assets	217,656	53,514	271,170
Expenditures for segment assets	3,714	234	3,948

The following is a reconciliation of reportable segment net sales, net earnings and assets to the Company's consolidated totals (in thousands):

	<u>2012</u>	<u>2011</u>	<u>2010</u>
Net sales			
Total net sales from reportable segments	\$454,585	\$396,189	\$284,706
Elimination of inter-company sales	(98,715)	(85,796)	(57,172)
Total consolidated net sales	<u>\$355,870</u>	<u>\$310,393</u>	<u>\$227,534</u>
Net earnings attributable to Twin Disc			
Total net earnings from reportable segments	\$ 36,137	\$ 32,742	\$ 5,479
Other corporate expenses	(10,025)	(13,912)	(4,882)
Total consolidated net earnings attributable to Twin Disc	<u>\$ 26,112</u>	<u>\$ 18,830</u>	<u>\$ 597</u>
Assets			
Total assets for reportable segments	\$330,373	\$325,482	
Corporate assets and eliminations	(26,541)	(16,362)	
Total consolidated assets	<u>\$303,832</u>	<u>\$309,120</u>	

Other significant items (in thousands):

	Segment Totals	Adjustments	Consolidated Totals
2012			
Interest income	\$727	\$ (632)	\$ 95
Interest expense	3,862	(2,387)	1,475
Income taxes	22,535	(4,089)	18,446
Depreciation and amortization	9,244	1,512	10,756
Expenditures for segment assets	12,979	754	13,733
2011			
Interest income	\$890	\$ (792)	\$ 98
Interest expense	4,234	(2,515)	1,719
Income taxes	21,798	(8,734)	13,064
Depreciation and amortization	8,439	1,465	9,904
Expenditures for segment assets	11,627	401	12,028
2010			
Interest income	\$1,000	\$ (916)	\$ 84
Interest expense	4,870	(2,588)	2,282
Income taxes	3,887	(2,895)	992
Depreciation and amortization	8,410	1,407	9,817
Expenditures for segment assets	3,948	508	4,456

All adjustments represent intercompany eliminations and corporate amounts.

TWIN DISC, INCORPORATED
ANNUAL REPORT 2012

Geographic information about the Company is summarized as follows (in thousands):

	<u>2012</u>	<u>2011</u>	<u>2010</u>
Net sales			
United States	\$165,658	\$127,469	\$ 79,301
Canada	44,889	44,659	13,600
Italy	27,075	32,063	30,244
Other countries	118,248	106,202	104,389
Total	<u>\$355,870</u>	<u>\$310,393</u>	<u>\$227,534</u>

Net sales by geographic region are based on product shipment destination.

	<u>2012</u>	<u>2011</u>
Long-lived assets		
United States	\$53,083	\$48,077
Belgium	7,372	8,761
Switzerland	8,278	9,574
Italy	4,438	6,137
Other countries	1,053	613
Total	<u>\$74,224</u>	<u>\$73,162</u>

There were no customers that accounted for 10% or more of consolidated net sales in fiscal 2012, 2011 or fiscal 2010.

K. STOCK-BASED COMPENSATION

During fiscal 2011, the Company adopted the Twin Disc, Incorporated 2010 Stock Incentive Plan for Non-Employee Directors (the "Directors' Plan"), a plan to grant non-employee directors equity based awards up to 250,000 shares of common stock, and the Twin Disc, Incorporated 2010 Long-Term Incentive Compensation Plan (the "Incentive Plan"), a plan under which officers and key employees may be granted equity based awards up to 650,000 shares of common stock. The Directors' Plan may grant options to purchase shares of common stock, at the discretion of the board, to non-employee directors who are elected or reelected to the board, or who continue to serve on the board. Such options carry an exercise price equal to the fair market value of the Company's common stock as of the date of grant, vest immediately, and expire ten years after the date of grant. Options granted under the Incentive Plan are determined to be non-qualified or incentive stock options as of the date of grant, and may carry a vesting schedule. For options under the Incentive Plan that are intended to qualify as incentive stock options, if the optionee owns more than 10% of the total combined voting power of the Company's stock, the price will not be less than 110% of the grant date fair market value and the options expire five years after the date of grant. There were no incentive options granted to a greater than 10% shareholder during the years presented. There were no options outstanding under the Directors' Plan and the Incentive Plan as of June 30, 2012 and 2011.

The Company has 21,600 non-qualified stock options outstanding as of June 30, 2012, under the Twin Disc, Incorporated Plan for Non-Employee Directors and Twin Disc, Incorporated 2004 Stock Incentive Plan. The 2004 plans were terminated during 2010, except options then outstanding will remain so until exercised or until they expire.

The Company has 44,000 non-qualified stock options outstanding at June 30, 2012, under the Twin Disc, Incorporated 1998 Incentive Compensation plan and the 1998 Stock Option Plan for Non-employee Directors. The 1998 plans were terminated during 2004, except that options then outstanding will remain so until exercised or until they expire.

Shares available for future options as of June 30 were as follows:

	<u>2012</u>	<u>2011</u>
2010 Long-term Stock Incentive Compensation Plan	600,831	650,000
2010 Stock Incentive Plan for Non-employee Directors	223,726	233,512

Stock option transactions under the plans during 2012 were as follows:

	2012	Weighted Average Price	Weighted Average Remaining Contractual Life (Years)	Aggregate Intrinsic Value
Non-qualified stock options:				
Options outstanding at beginning of year . . .	95,400	\$6.76		
Granted	—	—		
Canceled/Expired	—	—		
Exercised	(29,800)	5.58		
Options outstanding at June 30	<u>65,600</u>	<u>\$7.30</u>	<u>2.63</u>	<u>\$784,062</u>
Options exercisable at June 30	<u>65,600</u>	<u>\$7.30</u>	<u>2.63</u>	<u>\$784,062</u>
Options price range (\$3.25 – \$4.98)				
Number of shares	44,000			
Weighted average price	\$ 3.58			
Weighted average remaining life	1.00 years			
Options price range (\$5.73 – \$7.19)				
Number of shares	2,400			
Weighted average price	\$ 6.23			
Weighted average remaining life	3.00 years			
Options price range (\$10.01 – \$27.55)				
Number of shares	19,200			
Weighted average price	\$ 15.96			
Weighted average remaining life	6.31 years			
	2012	Weighted Average Price	Weighted Average Remaining Contractual Life (Years)	Aggregate Intrinsic Value
Incentive stock options:				
Options outstanding at beginning of year . . .	8,200	\$3.76		
Granted	—	—		
Canceled/Expired	(7,400)	3.76		
Exercised	(800)	3.76		
Options outstanding at June 30	<u>—</u>	<u>—</u>	<u>0.00</u>	<u>\$0</u>
Options exercisable at June 30	<u>—</u>	<u>\$ —</u>	<u>0.00</u>	<u>\$0</u>
Options price range (\$3.76 – \$4.98)				
Number of shares	—			
Weighted average price	\$ —			
Weighted average remaining life	0 years			

The Company accounts for stock-based compensation in accordance with ASC Topic 718-10, “Compensation – Stock Compensation.” In addition, the Company computes its windfall tax pool using the shortcut method. ASC Topic 718-10 requires the Company to expense the cost of employee services received in exchange for an award of equity instruments using the fair-value-based method. All options were 100% vested at the adoption of this statement.

During fiscal 2012, 2011 and 2010, 0, 0 and 7,200 non-qualified stock options were granted, respectively. As a result, compensation cost of \$0, \$0 and \$44,000 has been recognized in the Consolidated Statements of Operations and Comprehensive (Loss) Income for fiscal 2012, 2011 and 2010, respectively.

The total intrinsic value of options exercised during the years ended June 30, 2012, 2011 and 2010, was approximately \$1,002,000, \$630,000 and \$89,000, respectively.

In fiscal 2012, 2011 and 2010, the Company granted a target number of 15,449, 98,358 and 91,807 performance stock unit awards, respectively, to various employees of the Company, including executive officers. The performance stock unit awards granted in fiscal 2012 will vest if the Company achieves a specified target objective relating to consolidated economic profit (as defined in the Performance Stock Unit Award Grant Agreement) in the cumulative three fiscal year period ending June 30, 2014. The performance stock unit awards granted in fiscal 2012 are subject to adjustment if the Company's economic profit for the period falls below or exceeds the specified target objective, and the maximum number of performance stock units that can be awarded if the target objective is exceeded is 18,539. Based upon actual results to date and the probability of achieving the targeted performance levels, the Company is accruing the performance stock unit awards granted in fiscal 2012 at the target level. The performance stock unit awards granted in fiscal 2011 will vest if the Company achieves a specified target objective relating to consolidated economic profit (as defined in the Performance Stock Unit Award Grant Agreement) in the cumulative three fiscal year period ending June 30, 2013. The performance stock unit awards granted in fiscal 2011 are subject to adjustment if the Company's economic profit for the period falls below or exceeds the specified target objective, and the maximum number of performance stock units that can be awarded if the target objective is exceeded is 118,030. Based upon actual results to date and the probability of achieving the maximum performance levels, the Company is accruing the performance stock unit awards granted in fiscal 2011 at the maximum level. The performance stock unit awards granted in fiscal 2010 will vest if the Company achieves a specified target objective relating to consolidated economic profit (as defined in the Performance Stock Unit Award Grant Agreement) in the cumulative three fiscal year period ending June 30, 2012. The performance stock unit awards granted in fiscal 2010 are subject to adjustment if the Company's economic profit for the period falls below or exceeds the specified target objective, and the maximum number of performance stock units that can be awarded if the target objective is exceeded is 110,168. Based upon actual results to date, the Company is accruing the performance stock unit awards granted in fiscal 2010 at the maximum level. There were 133,479, 316,698 and 233,065 unvested performance stock unit awards outstanding at June 30, 2012, 2011 and 2010, respectively. The weighted average grant date fair value of the unvested awards at June 30, 2012, was \$15.79. The performance stock unit awards are remeasured at fair-value based upon the Company's stock price at the end of each reporting period. The fair-value of the stock unit awards are expensed over the performance period for the shares that are expected to ultimately vest. The compensation (income) expense for the year ended June 30, 2012, 2011 and 2010, related to the performance stock unit award grants, approximated (\$631,000), \$4,246,000 and \$0, respectively. At June 30, 2012, the Company had \$958,000 of unrecognized compensation expense related to the unvested shares that are ultimately expected to vest based upon the probability of achieving threshold performance levels. The total fair value of performance stock unit awards vested in fiscal 2012, 2011 and 2010 was \$2,068,000, \$0 and \$0, respectively. The performance stock unit awards are cash based, and are thus recorded as a liability on the Company's Consolidated Balance Sheets. As of June 30, 2012, these awards are included in "Accrued liabilities" (\$2,068,000) and "Other long-term liabilities" (\$1,547,000) due to a portion of the awards having performance periods ending in less than one year, with the others all exceeding one year. As of June 30, 2011, these awards were included in "Other long-term liabilities" (\$4,246,000) due to the performance periods all exceeding one year.

In fiscal 2012, 2011 and 2010, the Company granted a target number of 15,335, 72,546 and 74,173 performance stock awards, respectively, to various employees of the Company, including executive officers. The performance stock awards granted in fiscal 2012 will vest if the Company achieves a specified target objective relating to consolidated economic profit (as defined in the Performance Stock Award Grant Agreement) in the cumulative three fiscal year period ending June 30, 2014. The performance stock awards granted in fiscal 2012 are subject to adjustment if the Company's economic profit for the period falls below or exceeds the specified target objective, and the maximum number of performance shares that can be awarded if the target objective is exceeded is 18,402. Based upon actual results to date and the probability of achieving the targeted performance levels, the Company is accruing the performance stock awards granted in fiscal 2012 at the target level. The performance stock awards granted in fiscal 2011 will vest if the Company achieves a specified target objective relating to consolidated economic profit (as defined in the Performance Stock Award Grant Agreement) in the cumulative three fiscal year period ending June 30, 2013. The performance stock awards granted in fiscal 2011 are subject to adjustment if the Company's economic profit for the period falls below or exceeds the specified target objective, and the maximum number of performance shares that can be awarded if the target objective is exceeded is 87,055. Based upon actual results to date, the Company is accruing the performance stock awards granted in fiscal 2011 at the maximum level. The performance stock awards granted in fiscal 2010 will vest if the Company achieves a specified target objective relating to consolidated economic profit (as defined in the Performance Stock Award Grant Agreement) in the cumulative three fiscal year period ending June 30, 2012. The performance stock awards granted in fiscal 2010 are subject to adjustment if the Company's economic profit for the period falls below or exceeds the specified target objective, and the maximum number of performance shares that can be awarded if the target objective is exceeded is 89,008. Based upon actual results to date, the Company is accruing the performance stock awards granted in fiscal 2010 at the maximum level. There were 102,391, 242,563 and 177,983 unvested performance stock awards outstanding at June 30, 2012, 2011 and 2010, respectively. The fair value of the stock awards (on the date of grant) is expensed over the performance period for the shares that are expected to ultimately vest. The compensation expense for the year ended June 30, 2012, 2011 and 2010, related to performance stock awards, approximated

\$838,000, \$876,000 and \$0, respectively. The weighted average grant date fair value of the unvested awards at June 30, 2012, was \$16.60. At June 30, 2012, the Company had \$778,000 of unrecognized compensation expense related to the unvested shares that are ultimately expected to vest based upon the probability of achieving threshold performance levels. The total fair value of performance stock awards vested in fiscal 2012, 2011 and 2010 was \$1,671,000, \$0 and \$0, respectively.

In addition to the performance shares mentioned above, the Company has unvested restricted stock outstanding that will vest if certain service conditions are fulfilled. The fair value of the restricted stock grants is recorded as compensation over the vesting period, which is generally 1 to 4 years. During fiscal 2012, 2011 and 2010, the Company granted 43,620, 119,268 and 109,123 service-based restricted shares, respectively, to employees and non-employee directors in each year. There were 250,323, 237,691 and 126,423 unvested shares outstanding at June 30, 2012, 2011 and 2010, respectively. Compensation expense of \$1,435,000, \$1,026,000 and \$463,000 was recognized during the year ended June 30, 2012, 2011 and 2010, respectively, related to these service-based awards. The total fair value of restricted stock grants vested in fiscal 2012, 2011 and 2010 was \$977,000, \$133,000 and \$138,000, respectively. As of June 30, 2012, the Company had \$1,451,000 of unrecognized compensation expense related to restricted stock which will be recognized over the next three years.

L. ENGINEERING AND DEVELOPMENT COSTS

Engineering and development costs include research and development expenses for new products, development and major improvements to existing products, and other costs for ongoing efforts to refine existing products. Research and development costs charged to operations totaled \$2,657,000, \$2,475,000 and \$2,347,000 in fiscal 2012, 2011 and 2010, respectively. Total engineering and development costs were \$9,508,000, \$8,776,000 and \$7,885,000 in fiscal 2012, 2011 and 2010, respectively.

M. PENSION AND OTHER POSTRETIREMENT BENEFIT PLANS

The Company has non-contributory, qualified defined benefit pension plans covering substantially all domestic employees hired prior to October 1, 2003, and certain foreign employees. Domestic plan benefits are based on years of service, and, for salaried employees, on average compensation for benefits earned prior to January 1, 1997, and on a cash balance plan for benefits earned after January 1, 1997. The Company's funding policy for the plans covering domestic employees is to contribute an actuarially determined amount which falls between the minimum and maximum amount that can be deducted for federal income tax purposes.

On June 3, 2009, the Company announced it would freeze future accruals under the domestic defined benefit pension plans effective August 1, 2009.

In addition, the Company has unfunded, non-qualified retirement plans for certain management employees and Directors. In the case of management employees, benefits are based either on final average compensation or on an annual credit to a bookkeeping account, intended to restore the benefits that would have been earned under the qualified plans, but for the earnings limitations under the Internal Revenue Code. In the case of Directors, benefits are based on years of service on the Board. All benefits vest upon retirement from the Company.

In addition to providing pension benefits, the Company provides other postretirement benefits, including health care and life insurance benefits for certain domestic retirees. All employees retiring after December 31, 1992, and electing to continue health care coverage through the Company's group plan, are required to pay 100% of the premium cost.

The measurement date for the Company's pension and postretirement benefit plans in fiscal 2012 and 2011 was June 30.

TWIN DISC, INCORPORATED
ANNUAL REPORT 2012

Obligations and Funded Status

The following table sets forth the Company's defined benefit pension plans' and other postretirement benefit plans' funded status and the amounts recognized in the Company's balance sheets and statement of operations as of June 30 (in thousands):

	Pension Benefits		Other Postretirement Benefits	
	2012	2011	2012	2011
Change in benefit obligation:				
Benefit obligation, beginning of year	\$126,514	\$125,857	\$20,571	\$22,834
Service cost	292	198	41	32
Interest cost	6,231	6,324	985	1,096
Actuarial loss (gain)	9,082	4,523	161	(1,038)
Contributions by plan participants	182	—	—	—
Benefits paid	(9,040)	(10,388)	(2,113)	(2,353)
Benefit obligation, end of year	<u>\$133,261</u>	<u>\$126,514</u>	<u>\$19,645</u>	<u>\$20,571</u>
Change in plan assets:				
Fair value of assets, beginning of year	\$97,530	\$76,391	\$—	\$—
Actual return on plan assets	(4,077)	21,810	—	—
Employer contribution	4,180	9,717	2,113	2,353
Contributions by plan participants	182	—	—	—
Benefits paid	(9,040)	(10,388)	(2,113)	(2,353)
Fair value of assets, end of year	<u>\$88,775</u>	<u>\$97,530</u>	<u>\$—</u>	<u>\$—</u>
Funded status	<u>\$ (44,486)</u>	<u>\$ (28,984)</u>	<u>\$ (19,645)</u>	<u>\$ (20,571)</u>
Amounts recognized in the balance sheet consist of:				
Other assets – noncurrent	\$411	\$587	\$—	\$—
Accrued liabilities – current	(113)	(130)	(2,862)	(3,008)
Accrued retirement benefits – noncurrent	(44,784)	(29,441)	(16,783)	(17,563)
Net amount recognized	<u>\$ (44,486)</u>	<u>\$ (28,984)</u>	<u>\$ (19,645)</u>	<u>\$ (20,571)</u>
Amounts recognized in accumulated other comprehensive loss consist of (net of tax):				
Prior service cost	\$—	\$—	\$—	\$ (321)
Net transition obligation	369	—	—	—
Actuarial net loss	46,163	34,768	4,549	5,033
Net amount recognized	<u>\$46,532</u>	<u>\$34,768</u>	<u>\$4,549</u>	<u>\$4,712</u>

The amounts in accumulated other comprehensive loss that are expected to be recognized as components of net periodic benefit cost during the next fiscal year for the qualified domestic defined benefit and other postretirement benefit plans are as follows (in thousands):

	Pension Benefits	Other Postretirement Benefits
Net transition obligation	\$35	\$—
Actuarial net loss	3,380	792
Net amount to be recognized	<u>\$3,415</u>	<u>\$792</u>

The accumulated benefit obligation for all defined benefit pension plans was approximately \$133,261,000 and \$126,514,000 at June 30, 2012 and 2011, respectively.

Information for pension plans with an accumulated benefit obligation in excess of plan assets (in thousands):

	<u>June 30, 2012</u>	<u>June 30, 2011</u>
Projected and accumulated benefit obligation	\$131,369	\$124,328
Fair value of plan assets	86,472	94,757

Components of Net Periodic Benefit Cost
(in thousands)

	Pension Benefits		
	<u>2012</u>	<u>2011</u>	<u>2010</u>
Service cost	\$ 292	\$ 198	\$ 292
Interest cost	6,231	6,324	7,282
Expected return on plan assets	(7,766)	(6,096)	(6,052)
Settlement loss	11	23	99
Amortization of transition obligation	34	—	60
Amortization of actuarial net loss	2,319	3,118	2,637
Net periodic benefit cost	<u>\$1,121</u>	<u>\$3,567</u>	<u>\$4,318</u>

	Other Postretirement Benefits		
	<u>2012</u>	<u>2011</u>	<u>2010</u>
Service cost	\$ 41	\$ 32	\$ 28
Interest cost	985	1,096	1,347
Amortization of prior service cost	(508)	(678)	(678)
Amortization of actuarial net loss	929	1,124	859
Net periodic benefit cost	<u>\$1,447</u>	<u>\$1,574</u>	<u>\$1,556</u>

Other Changes in Plan Assets and Benefit Obligations Recognized in Other Comprehensive Income for Fiscal 2012
(Pre-tax, in thousands)

	Pension Benefits		Other Postretirement Benefits	
	<u>2012</u>	<u>2011</u>	<u>2012</u>	<u>2011</u>
Net (loss) gain	\$21,183	—	\$(161)	(509)
Amortization of prior service benefit	—	(34)	—	929
Amortization of transition asset	(2,330)	—	—	—
Amortization of net (loss) gain	18,819	259	259	—
Total recognized in other comprehensive income	<u>1,121</u>	<u>1,447</u>	<u>1,447</u>	<u>1,447</u>
Net periodic benefit cost	18,819	259	259	—
Total recognized in net periodic benefit cost and other comprehensive income	<u>\$19,940</u>	<u>\$1,706</u>	<u>\$1,706</u>	<u>\$1,706</u>

Additional Information

Assumptions (as of June 30, 2012 and 2011)	Pension Benefits		Other Postretirement Benefits	
	<u>2012</u>	<u>2011</u>	<u>2012</u>	<u>2011</u>
Weighted average assumptions used to determine benefit obligations at June 30:				
Discount rate	4.20%	5.16%	4.20%	5.16%
Expected return on plan assets	7.50%	8.50%	—	—
	<u>2012</u>	<u>2011</u>	<u>2012</u>	<u>2011</u>
Weighted average assumptions used to determine net periodic benefit cost for years ended June 30:				
Discount rate	5.16%	5.09%	5.16%	5.09%
Expected return on plan assets	8.50%	8.50%	8.50%	8.50%
Rate of compensation increase	N/A	N/A	5.00%	5.00%

The assumed weighted-average health care cost trend rate was 7.5% in 2012, grading down to 5% in 2017. A 1% increase in the assumed health care cost trend would increase the accumulated postretirement benefit obligation by approximately \$468,000 and the service and interest cost by approximately \$25,000. A 1% decrease in the assumed health care cost trend would decrease the accumulated postretirement benefit obligation by approximately \$419,000 and the service and interest cost by approximately \$23,000.

Plan Assets

The Company’s Pension Committee (“Committee”) oversees investment matters related to the Company’s funded benefit plans. The Committee works with external actuaries and investment consultants on an ongoing basis to establish and monitor investment strategies and target asset allocations. The overall objective of the Committee’s investment strategy is to earn a rate of return over time to satisfy the benefit obligations of the pension plans and to maintain sufficient liquidity to pay benefits and address other cash requirements of the pension plans. The Committee has established an Investment Policy Statement which provides written documentation of the Company’s expectations regarding its investment programs for the pension plans, establishes objectives and guidelines for the investment of the plan assets consistent with the Company’s financial and benefit-related goals, and outlines criteria and procedures for the ongoing evaluation of the investment program. The Company employs a total return on investment approach whereby a mix of investments among several asset classes are used to maximize long-term return of plan assets while avoiding excessive risk. Investment risk is measured and monitored on an ongoing basis through quarterly investment portfolio reviews, and annual liability measurements.

The Company’s pension plan weighted-average asset allocations at June 30, 2012 and 2011, by asset category are as follows:

Asset Category	Target Allocation	June 30	
		2012	2011
Equity securities.....	65%	64%	66%
Debt securities.....	25%	25%	25%
Real estate.....	10%	11%	9%
	<u>100%</u>	<u>100%</u>	<u>100%</u>

Due to market conditions and other factors, actual asset allocation may vary from the target allocation outlined above. The pension plans held 98,211 shares of Company stock with a fair market value of \$1,815,921 (2.2 percent of total plan assets) at June 30, 2012, and 98,211 shares with a fair market value of \$3,793,891 (4.1 percent of total plan assets) at June 30, 2011.

The plans have a long-term return assumption of 7.50%. This rate was derived based upon historical experience and forward-looking return expectations for major asset class categories.

Fair value is defined as the price that would be received on the sale of an asset or paid to transfer a liability in an orderly transaction between market participants at the measurement date. The inputs used to measure fair value are classified into the following hierarchy:

- Level I Unadjusted quoted prices in active markets for identical instruments
- Level II Unadjusted quoted prices in active markets for similar instruments, or
 Unadjusted quoted prices for identical or similar instruments in markets that are not active, or
 Other inputs that are observable in the market or can be corroborated by observable market data
- Level III Use of one or more significant unobservable inputs

The following table presents plan assets using the fair value hierarchy as of June 30, 2012 (in thousands):

	<u>Total</u>	<u>Level I</u>	<u>Level II</u>	<u>Level III</u>
Cash and cash equivalents	\$ 748	\$ 748	\$ —	\$ —
Equity securities:				
U.S. (a).....	27,549	27,549	—	—
International (b).....	13,348	8,747	4,601	—
Fixed income (c)	20,652	6,876	13,776	—
Annuity contracts	5,333	—	—	5,333
Real estate	9,157	—	3,833	5,324
Other (d).....	11,988	—	—	11,988
Total.....	<u>\$88,775</u>	<u>\$43,920</u>	<u>\$22,210</u>	<u>\$22,645</u>

(a) U.S. equity securities include companies that are well diversified by industry sector and equity style (i.e., growth and value strategies). Investments are primarily in large capitalization stocks and, to a lesser extent, mid- and small-cap stocks.

(b) International equities are invested in companies that are traded on exchanges outside the U.S. and are well diversified by industry sector, country, capitalization and equity style (i.e., growth and value strategies). The vast majority of the investments are made in companies in developed markets with a smaller percentage in emerging markets.

(c) Fixed income consists of corporate bonds with investment grade BBB or better from diversified industries, as well as government debt securities.

(d) Other consists of hedged equity.

The following table presents a reconciliation of the fair value measurements using significant unobservable inputs (Level III) as of June 30, 2012 (in thousands):

	<u>Annuity Contracts</u>	<u>Real Estate</u>	<u>Other</u>
Balance – June 30, 2011	\$5,810	\$5,260	\$12,368
Actual return on plan assets:			
Relating to assets still held at reporting date.....	(681)	334	(380)
Relating to assets sold during the period	—	—	—
Purchases, sales and settlements, net	204	—	—
Transfers in and/or out of Level III	—	(270)	—
Balance – June 30, 2012	<u>\$5,333</u>	<u>\$5,324</u>	<u>\$11,988</u>

Cash Flows

Contributions

The Company expects to contribute \$6,479,000 to its defined benefit pension plans in fiscal 2013. As part of the pension funding provisions contained in the Surface Transportation Extension Act of 2012 passed by Congress in June 2012, Twin Disc, Inc.'s fiscal 2013 pension contributions are projected to be reduced to \$4 million from \$6 million, pending a final interest rate to be issued by the IRS.

Estimated Future Benefit Payments

The following benefit payments, which reflect expected future service, as appropriate, are expected to be paid (in thousands):

	<u>Pension Benefits</u>	<u>Other Postretirement Benefits Gross Benefits</u>	<u>Part D Reimbursement</u>	<u>Net Benefit Payments</u>
2013	\$10,248	\$2,862	\$ —	\$2,862
2014	9,514	2,298	—	2,298
2015	9,494	2,180	—	2,180
2016	9,376	2,053	—	2,053
2017	9,045	1,923	—	1,923
Years 2018–2022.....	44,148	7,595	—	7,595

The Company sponsors defined contribution plans covering substantially all domestic employees and certain foreign employees. These plans provide for employer contributions based primarily on employee participation. The total expense under the plans was \$2,411,000, \$2,469,000 and \$2,111,000 in fiscal 2012, 2011 and 2010, respectively.

N. INCOME TAXES

United States and foreign earnings before income taxes and noncontrolling interest were as follows (in thousands):

	<u>2012</u>	<u>2011</u>	<u>2010</u>
United States	\$43,335	\$27,914	\$4,127
Foreign	1,421	4,115	(2,405)
	<u>\$44,756</u>	<u>\$32,029</u>	<u>\$1,722</u>

The provision (benefit) for income taxes is comprised of the following (in thousands):

	<u>2012</u>	<u>2011</u>	<u>2010</u>
Currently payable:			
Federal	\$ 7,241	\$ 8,704	\$ 490
State	188	373	302
Foreign	3,531	2,633	1,674
	<u>10,960</u>	<u>11,710</u>	<u>2,466</u>
Deferred:			
Federal	7,653	(315)	532
State	662	(97)	(58)
Foreign	(829)	1,766	(1,948)
	<u>7,486</u>	<u>1,354</u>	<u>(1,474)</u>
	<u>\$18,446</u>	<u>\$13,064</u>	<u>\$ 992</u>

The components of the net deferred tax asset as of June 30 are summarized in the table below (in thousands):

	<u>2012</u>	<u>2011</u>
Deferred tax assets:		
Retirement plans and employee benefits	\$25,316	\$24,387
State net operating loss and other state credit carryforwards	14	240
Inventory	1,283	1,353
Reserves	2,016	1,810
Research and development capitalization	63	186
Foreign NOL carryforwards	4,359	3,379
Accruals	543	306
Other assets	96	124
	<u>33,690</u>	<u>31,785</u>
Deferred tax liabilities:		
Property, plant and equipment	8,780	6,704
Intangibles	5,869	6,313
Other liabilities	490	361
	<u>15,139</u>	<u>13,378</u>
Valuation allowance	(3,811)	(2,751)
Total net deferred tax assets	<u>\$14,740</u>	<u>\$15,656</u>

The Company maintains valuation allowances when it is more likely than not that all or a portion of a deferred tax asset will not be realized. Changes in valuation allowances from period to period are included in the tax provision in the period of change. In determining whether a valuation allowance is required, the Company takes into account such factors as prior earnings history, expected future earnings, carryback and carryforward periods, and tax strategies that could potentially enhance the likelihood of realization of a deferred tax asset. During fiscal 2012, the Company continued to incur operating losses in certain foreign jurisdictions where the loss carryforward period is unlimited. The Company has evaluated the realizability of the net deferred tax assets related to these jurisdictions and concluded that based primarily upon continuing losses in these jurisdictions and failure to achieve targeted levels of improvement, a full valuation allowance continues to be necessary. Therefore, the Company recorded an additional valuation allowance of \$1,060,000 in fiscal 2012. Management believes that it is more likely than not that the results of future operations will generate sufficient taxable income and foreign source income to realize the remaining deferred tax assets.

During fiscal 2010, the Company identified and recorded three out-of-period tax errors that related to prior fiscal periods. Recording these out-of-period tax errors in fiscal 2010 reduced total income tax expense by \$28,000. The Company believes these tax errors were not material to the 2010 or any previously issued financial statements. In addition, these errors do not impact the fiscal 2011 or 2012 consolidated financial statements.

During the third quarter of fiscal 2012, the Company completed and filed its 2011 Federal and State income tax returns. subsequently, the Company completed its return-to-provision reconciliation to determine differences between positions taken per the year-end fiscal 2011 book tax provision and the actual positions taken per the 2011 returns. This reconciliation identified an error in the fiscal 2011 tax provision, which resulted in overstating fiscal 2011 earnings by \$608,000. To correct this error, the Company increased tax expense by \$608,000 in the third quarter of fiscal 2012. This adjustment was effectively offset by normal provision to return adjustments in the quarter, resulting in a minimal impact on the effective tax rate. The Company believes this tax error was not material to the 2012 or any previously issued financial statements.

Following is a reconciliation of the applicable U.S. federal income taxes to the actual income taxes reflected in the statements of operations (in thousands):

	<u>2012</u>	<u>2011</u>	<u>2010</u>
U.S. federal income tax at 35%.....	\$15,595	\$11,163	\$540
Increases (reductions) in tax resulting from:			
Foreign tax items	869	419	587
State taxes	797	129	160
Valuation allowance.....	1,060	2,491	48
Change in prior year estimate	96	(157)	(216)
Research and development tax credits.....	(215)	(387)	(184)
Section 199 deduction	(908)	(735)	—
Goodwill impairment	1,292	—	—
Other, net.....	(140)	141	57
	<u>\$18,446</u>	<u>\$13,064</u>	<u>\$992</u>

The Company has not provided additional U.S. income taxes on cumulative earnings of consolidated foreign subsidiaries that are considered to be reinvested indefinitely. The Company reaffirms its position that these earnings remain permanently reinvested, and has no plans to repatriate funds to the U.S. for the foreseeable future. These earnings relate to ongoing operations and were approximately \$8.1 million at June 30, 2012. Such earnings could become taxable upon the sale or liquidation of these foreign subsidiaries or upon dividend repatriation. The Company's intent is for such earnings to be reinvested by the subsidiaries or to be repatriated only when it would be tax effective through the utilization of foreign tax credits.

Annually, we file income tax returns in various taxing jurisdictions inside and outside the United States. In general, the tax years that remain subject to examination are 2008 through 2012 for our major operations in the U.S., Italy, Belgium and Japan. The tax years open to examination in the U.S. are for years subsequent to fiscal 2008, but currently fiscal 2010 and 2011 are under audit. It is reasonably possible that at least one of these audit cycles will be completed during fiscal 2013.

The Company has approximately \$560,000 of unrecognized tax benefits as of June 30, 2012, which, if recognized, would impact the effective tax rate. The company has settled the IRS audit for fiscal years 2003 through 2007, resulting in a decrease of approximately \$350,000. The Company's policy is to accrue interest and penalties related to unrecognized tax benefits in income tax expense.

Below is a reconciliation of beginning and ending amount of unrecognized tax benefits (in thousands):

	<u>June 30, 2012</u>	<u>June 30, 2011</u>
Unrecognized tax benefits, beginning of year	\$853	\$808
Additions based on tax positions related to the prior year.....	—	6
Additions based on tax positions related to the current year	107	136
Reductions based on tax positions related to the prior year	—	—
Subtractions due to statutes closing	(50)	(60)
Settlements with taxing authorities.....	(350)	(37)
Unrecognized tax benefits, end of year.....	<u>\$560</u>	<u>\$853</u>

As of June 30, 2012 and 2011, the amounts accrued for interest and penalties totaled \$41,000 and \$136,000, respectively, and are not included in the reconciliation above.

O. CONTINGENCIES

The Company is involved in litigation of which the ultimate outcome and liability to the Company, if any, are not presently determinable. Management believes that final disposition of such litigation will not have a material impact on the Company's results of operations or financial position.

TWIN DISC, INCORPORATED AND SUBSIDIARIES
SCHEDULE II – VALUATION AND QUALIFYING ACCOUNTS

for the years ended June 30, 2012, 2011 and 2010 (in thousands)

Description	Balance at Beginning of Period	Charged to Costs and Expenses	— Additions —		Balance at End of of Period
			Net Acquired	Deductions ¹	
2012:					
Allowance for losses on accounts receivable	\$2,093	\$ 549	\$ —	\$ 448	\$2,194
Deferred tax valuation allowance	\$2,751	\$1,060	\$ —	\$ —	\$3,811
2011:					
Allowance for losses on accounts receivable	\$1,792	\$1,078	\$ —	\$ 777	\$2,093
Deferred tax valuation allowance	\$ 260	\$2,751	\$ —	\$ 260	\$2,751
2010:					
Allowance for losses on accounts receivable	\$1,623	\$ 412	\$ —	\$ 243	\$1,792
Deferred tax valuation allowance	\$ 212	\$ 48	\$ —	\$ —	\$ 260

¹ Amounts primarily represent accounts receivable written-off during the year along with other adjustments (primarily foreign currency translation adjustments).

SIGNATURES

Pursuant to the requirements of Section 13 or 15(d) of the Securities Exchange Act of 1934, the Registrant has duly caused this Report to be signed on its behalf by the undersigned, thereunto duly authorized.

TWIN DISC, INCORPORATED

September 13, 2012

By /s/ **MICHAEL E. BATTEN**
Michael E. Batten
Chairman and Chief Executive Officer

Pursuant to the requirements of the Securities Exchange Act of 1934, this Report has been signed below by the following persons on behalf of the registrant and in the capacities and on the dates indicated.

September 13, 2012

By /s/ **MICHAEL E. BATTEN**
Michael E. Batten, Chairman,
Chief Executive Officer and Director

September 13, 2012

By /s/ **JOHN H. BATTEN**
John H. Batten,
President, Chief Operating Officer and Director

September 13, 2012

By /s/ **CHRISTOPHER J. EPERJESY**
Christopher J. Eperjesy, Vice President – Finance,
Chief Financial Officer and Treasurer

September 13, 2012

By /s/ **JEFFREY S. KNUTSON**
Jeffrey S. Knutson, Corporate Controller
(Chief Accounting Officer)

September 13, 2012

Michael Doar, Director
Malcolm F. Moore, Director
David B. Rayburn, Director
Michael C. Smiley, Director
Harold M. Stratton II, Director
David R. Zimmer, Director

By /s/ **THOMAS E. VALENTYN**
Thomas E. Valentyn,
General Counsel and Secretary
(Attorney In Fact)

EXHIBIT INDEX**TWIN DISC, INCORPORATED**

10-K for Year Ended June 30, 2012

Exhibit No.	Description	Included Herewith
3a)	Restated Articles of Incorporation of Twin Disc, Incorporated (Incorporated by reference to Exhibit 3.1 of the Company's Form 8-K dated December 6, 2007). File No. 001-07635.	
3b)	Restated Bylaws of Twin Disc, Incorporated, as amended through January 19, 2010 (Incorporated by reference to Exhibit 3.1 of the Company's Form 8-K dated January 21, 2010). File No. 001-07635.	
4a)	Description of Shareholder Rights Plan and Form of Rights Agreement dated as of December 20, 2007, by and between the Company and Mellon Investor Services, LLC, as Rights Agent, with Form of Rights Certificate (Incorporated by reference to Item 3.03 and Exhibit 4 of the Company's Form 8-K dated December 20, 2007). File No. 001-07635.	
4b)	First Amendment to Rights Agreement, effective as of May 1, 2012, between Twin Disc, Incorporated and Computershare Shareowner Services, LLC (Incorporated by reference to Exhibit 4.1 of the Company's Form 8-K dated May 1, 2012). File No. 001-07635.	
Exhibit 10	Material Contracts	
a)	Director Tenure and Retirement Policy (Incorporated by reference to Exhibit 10a of the Company's Form 10-K/A filed September 19, 2011, for the year ended June 30, 2011). File No. 001-07635.	
b)	The 1998 Incentive Compensation Plan (Incorporated by reference to Exhibit A of the Proxy Statement for the Annual Meeting of Shareholders held on October 16, 1998). File No. 001-07635.	
c)	The 1998 Stock Option Plan for Non-Employee Directors (Incorporated by reference to Exhibit B of the Proxy Statement for the Annual Meeting of Shareholders held on October 16, 1998). File No. 001-07635.	
d)	The 2004 Stock Incentive Plan as amended (Incorporated by reference to Exhibit B of the Proxy Statement for the Annual Meeting of Shareholders held on October 20, 2006). File No. 001-07635.	
e)	The 2004 Stock Incentive Plan for Non-Employee Directors as amended (Incorporated by reference to Exhibit 99 of the Company's Form 10-K for the year ended June 30, 2007). File No. 001-07635.	
f)	The 2010 Long-Term Incentive Compensation Plan (Incorporated by reference to Appendix A of the Proxy Statement for the Annual Meeting of Shareholders held on October 15, 2010). File No. 001-07635.	
g)	The 2010 Stock Incentive Plan for Non-Employee Directors (Incorporated by reference to Appendix B of the Proxy Statement for the Annual Meeting of Shareholders held on October 15, 2010). File No. 001-07635.	
h)	Form of Performance Stock Award Grant Agreement (Incorporated by reference to Exhibit 10.1 of the Company's Form 8-K dated July 30, 2008). File No. 001-07635.	
i)	Form of Performance Stock Unit Award Grant Agreement (Incorporated by reference to Exhibit 10.2 of the Company's Form 8-K dated July 30, 2008). File No. 001-07635.	
j)	Form of Restricted Stock Grant Agreement (Incorporated by reference to Exhibit 10.3 of the Company's Form 8-K dated July 30, 2008). File No. 001-07635.	
k)	Form of Performance Stock Award Agreement (Incorporated by reference to Exhibit 10.1 of the Company's Form 8-K dated August 5, 2009). File No. 001-07635.	
l)	Form of Performance Stock Unit Award Agreement (Incorporated by reference to Exhibit 10.2 of the Company's Form 8-K dated August 5, 2009). File No. 001-07635.	
m)	Form of Restricted Stock Grant Agreement (Incorporated by reference to Exhibit 10.3 of the Company's Form 8-K dated August 5, 2009). File No. 001-07635.	
n)	Form of Performance Stock Award Grant Agreement for award of performance shares on July 29, 2010 (Incorporated by reference to Exhibit 10.1 of the Company's Form 8-K dated August 4, 2010). File No. 001-07635.	
o)	Form of Performance Stock Unit Award Agreement for award of performance stock units on July 29, 2010 (Incorporated by reference to Exhibit 10.2 of the Company's Form 8-K dated August 4, 2010). File No. 001-07635.	
p)	Form of Restricted Stock Grant Agreement for restricted stock grants on July 29, 2010 (Incorporated by reference to Exhibit 10.3 of the Company's Form 8-K dated August 4, 2010). File No. 001-07635.	
q)	Form of Performance Stock Award Grant Agreement for award of performance shares on July 28, 2011 (Incorporated by reference to Exhibit 10.1 of the Company's Form 8-K dated August 3, 2011). File No. 001-07635.	

EXHIBIT INDEX
TWIN DISC, INCORPORATED

10-K for Year Ended June 30, 2012

Exhibit No.	Material Contracts	Included Herewith
r)	Form of Performance Stock Unit Award Agreement for award of performance stock units on July 28, 2011 (Incorporated by reference to Exhibit 10.2 of the Company's Form 8-K dated August 3, 2011). File No. 001-07635.	
s)	Form of Restricted Stock Grant Agreement for restricted stock grants on July 28, 2011 (Incorporated by reference to Exhibit 10.3 of the Company's Form 8-K dated August 3, 2011). File No. 001-07635.	
t)	Form of Performance Stock Award Grant Agreement for award of performance shares on July 26, 2012 (Incorporated by reference to Exhibit 10.1 of the Company's Form 8-K dated August 1, 2012). File No. 001-07635.	
u)	Form of Performance Stock Unit Award Agreement for award of performance stock units on July 26, 2012 (Incorporated by reference to Exhibit 10.2 of the Company's Form 8-K dated August 1, 2012). File No. 001-07635.	
v)	Form of Restricted Stock Grant Agreement for restricted stock grants on July 26, 2012 (Incorporated by reference to Exhibit 10.3 of the Company's Form 8-K dated August 1, 2012). File No. 001-07635.	
w)	Twin Disc, Incorporated Supplemental Executive Retirement Plan, amended and restated as of July 29, 2010 (Incorporated by reference to Exhibit 10.4 of the Company's Form 8-K dated August 4, 2010). File No. 001-07635.	
x)	Pension Promise Agreement between Twin Disc International, S.A. and Henri Claude Fabry (Incorporated by reference to Exhibit 10.5 of the Company's Form 8-K dated August 4, 2010). File No. 001-07635.	
y)	Management Agreement between Twin Disc International S.A. and H. Claude Fabry (Incorporated by reference to Exhibit 10.4 of the Company's Form 8-K dated August 1, 2012). File No. 001-07635.	
z)	Forms of Change in Control Severance Agreements (Incorporated by reference to Exhibits 10.3, 10.4 and 10.5 of the Company's Form 8-K dated August 2, 2007). File No. 001-07635.	
aa)	Form of Indemnity Agreement (Incorporated by reference to Exhibit 10.5 of the Company's Form 8-K dated August 2, 2005). File No. 001-07635.	
bb)	Amended and Restated Loan Agreement for \$40,000,000 Revolving Credit Dated May 13, 2011 (Incorporated by reference to Exhibit 10.1 of the Company's Form 8-K Dated May 13, 2011). File No. 001-07635.	
cc)	Note Agreement for \$25,000,000 of 6.05% Senior Notes due April 10, 2016 (Incorporated by reference to Exhibit 4.1 of the Company's Form 8-K dated April 12, 2006). File No. 001-07635.	
dd)	Amendment 1 to Note Agreement for 6.05% Senior Notes (Incorporated by reference to Exhibit 10p of the Company's Form 10-K for the year ended June 30, 2007). File No. 001-07635.	
ee)	Amendment 2 to Note Agreement for 6.05% Senior Notes (Incorporated by reference to Exhibit 10q of the Company's Form 10-K for the year ended June 30, 2007). File No. 001-07635.	
ff)	Amendment 3 to Note Agreement for 6.05% Senior Notes (Incorporated by reference to Exhibit 10w of the Company's Forms 10-K and 10-K/A for the year ended June 30, 2009). File No. 001-07635.	
gg)	Amendment 4 to Note Agreement for 6.05% Senior Notes (Incorporated by reference to Exhibit 10x of the Company's Forms 10-K and 10-K/A for the year ended June 30, 2009). File No. 001-07635.	
hh)	Amendment 5 to Note Agreement for 6.05% Senior Notes. (Incorporated by reference to Exhibit 10ff of the Company's Form 10-K for the year ended June 30, 2011). File No. 001-07635.	
Exhibit No.	Description	
21	Subsidiaries of the Registrant	X
23	Consent of Independent Registered Public Accounting Firm	X
24	Power of Attorney	X
31a	Certification	X
31b	Certification	X
32a	Certification pursuant to 18 U.S.C. Section 1350	X
32b	Certification pursuant to 18 U.S.C. Section 1350	X

EXHIBIT 21

SUBSIDIARIES OF THE REGISTRANT

Twin Disc, Incorporated, the registrant (a Wisconsin Corporation) owns directly or indirectly 100% of the following subsidiaries:

1. Twin Disc International, S.A. (a Belgian corporation)
2. Twin Disc Srl (an Italian corporation)
3. Rolla SP Propellers SA (a Swiss corporation)
4. Twin Disc (Pacific) Pty. Ltd. (an Australian corporation)
5. Twin Disc (Far East) Ltd. (a Delaware corporation operating in Singapore and Hong Kong)
6. Twin Disc (Far East) Pte. Ltd. (a Singapore corporation)
7. Mill Log Equipment Co., Inc. (an Oregon corporation)
8. Mill Log Marine, Inc. (an Oregon corporation)
9. Mill Log Wilson Equipment Ltd. (a Canadian corporation)
10. Twin Disc Southeast, Inc. (a Florida corporation)
11. Vetus Italia Srl (an Italian corporation)
12. Twin Disc Japan (a Japanese corporation)
13. Twin Disc Power Transmission Private, Ltd. (an Indian limited liability corporation)

Twin Disc, Incorporated also owns 66% of Twin Disc Nico Co. LTD. (a Japanese corporation).

The registrant has no parent nor any other subsidiaries. All of the above subsidiaries are included in the consolidated financial statements.

EXHIBIT 23

CONSENT OF INDEPENDENT REGISTERED PUBLIC ACCOUNTING FIRM

We hereby consent to the incorporation by reference in the Registration Statement on Form S 8 (Nos. 333-99229, 333-119770, 333-119771, 333-69361, 333-69015, 333-169965, 333-169963 and 333-169962) of Twin Disc, Incorporated of our report dated September 13, 2012 relating to the financial statements, financial statement schedule and the effectiveness of internal control over financial reporting, which appears in this Form 10-K.

PricewaterhouseCoopers LLP

Milwaukee, Wisconsin
September 13, 2012

EXHIBIT 24

POWER OF ATTORNEY

The undersigned directors of Twin Disc, Incorporated hereby severally constitute Michael E. Batten and Thomas E. Valentyn, and each of them singly, true and lawful attorneys with full power to them, and each of them, singly, to sign for us and in our names as directors the Form 10-K Annual Report for the fiscal year ended June 30, 2012, pursuant to Section 13 or 15(d) of the Securities Exchange Act of 1934, and generally do all such things in our names and behalf as directors to enable Twin Disc, Incorporated to comply with the provisions of the Securities and Exchange Act of 1934 and all requirements of the Securities and Exchange Commission, hereby ratifying and confirming our signatures so they may be signed by our attorneys, or either of them, as set forth below.

July 27, 2012

/s/MICHAEL DOAR
Michael Doar, Director

/s/ MICHAEL C. SMILEY
Michael C. Smiley, Director

/s/ MALCOLM F. MOORE
Malcolm F. Moore, Director

/s/ HAROLD M. STRATTON II
Harold M. Stratton II, Director

/s/ DAVID B. RAYBURN
David B. Rayburn, Director

/s/ DAVID R. ZIMMER
David R. Zimmer, Director

EXHIBIT 31a

CERTIFICATIONS

I, Michael E. Batten, certify that:

1. I have reviewed this annual report on Form 10-K of Twin Disc, Incorporated;
2. Based on my knowledge, this report does not contain any untrue statement of a material fact or omit to state a material fact necessary to make the statements made, in light of the circumstances under which such statements were made, not misleading with respect to the period covered by this report;
3. Based on my knowledge, the financial statements, and other financial information included in this report, fairly present in all material respects the financial condition, results of operations and cash flows of the registrant as of, and for, the periods presented in this report;
4. The registrant's other certifying officers and I are responsible for establishing and maintaining disclosure controls and procedures (as defined in Exchange Act Rules 13a-15(e) and 15d-15(e)) and internal control over financial reporting (as defined in Exchange Act Rules 13a-15(f) and 15d-15(f)) for the registrant and have:
 - a) designed such disclosure controls and procedures, or caused such disclosure controls and procedures to be designed under our supervision, to ensure that material information relating to the registrant, including its consolidated subsidiaries, is made known to us by others within those entities, particularly during the period in which this report is being prepared;
 - b) designed such internal control over financial reporting, or caused such internal control over financial reporting to be designed under our supervision, to provide reasonable assurance regarding the reliability of financial reporting and the preparation of financial statements for external purposes in accordance with generally accepted accounting principles;
 - c) evaluated the effectiveness of the registrant's disclosure controls and procedures and presented in this annual report our conclusions about the effectiveness of the disclosure controls and procedures, as of the end of the period covered by this annual report based on such evaluation; and
 - d) disclosed in this report any change in the registrant's internal control over financial reporting that occurred during the registrant's most recent fiscal quarter (the registrant's fourth fiscal quarter in the case of this annual report) that has materially affected, or is reasonably likely to materially affect, the registrant's internal control over financial reporting; and
5. The registrant's other certifying officers and I have disclosed, based on our most recent evaluation of internal control over financial reporting, to the registrant's auditors and the audit committee of registrant's board of directors (or persons performing the equivalent functions):
 - a) all significant deficiencies and material weaknesses in the design or operation of internal control over financial reporting which are reasonably likely to adversely affect the registrant's ability to record, process, summarize and report financial information; and
 - b) any fraud, whether or not material, that involves management or other employees who have a significant role in the registrant's internal control over financial reporting.

Date: September 13, 2012

/s/ **MICHAEL E. BATTEN**
Michael E. Batten
Chairman and Chief Executive Officer

EXHIBIT 31b

CERTIFICATIONS

I, Christopher J. Eperjesy, certify that:

1. I have reviewed this annual report on Form 10-K of Twin Disc, Incorporated;
2. Based on my knowledge, this report does not contain any untrue statement of a material fact or omit to state a material fact necessary to make the statements made, in light of the circumstances under which such statements were made, not misleading with respect to the period covered by this report;
3. Based on my knowledge, the financial statements, and other financial information included in this report, fairly present in all material respects the financial condition, results of operations and cash flows of the registrant as of, and for, the periods presented in this report;
4. The registrant's other certifying officers and I are responsible for establishing and maintaining disclosure controls and procedures (as defined in Exchange Act Rules 13a-15(e) and 15d-15(e)) and internal control over financial reporting (as defined in Exchange Act Rules 13a-15(f) and 15d-15(f)) for the registrant and have:
 - a) designed such disclosure controls and procedures, or caused such disclosure controls and procedures to be designed under our supervision, to ensure that material information relating to the registrant, including its consolidated subsidiaries, is made known to us by others within those entities, particularly during the period in which this report is being prepared;
 - b) designed such internal control over financial reporting, or caused such internal control over financial reporting to be designed under our supervision, to provide reasonable assurance regarding the reliability of financial reporting and the preparation of financial statements for external purposes in accordance with generally accepted accounting principles;
 - c) evaluated the effectiveness of the registrant's disclosure controls and procedures and presented in this annual report our conclusions about the effectiveness of the disclosure controls and procedures, as of the end of the period covered by this annual report based on such evaluation; and
 - d) disclosed in this report any change in the registrant's internal control over financial reporting that occurred during the registrant's most recent fiscal quarter (the registrant's fourth fiscal quarter in the case of this annual report) that has materially affected, or is reasonably likely to materially affect, the registrant's internal control over financial reporting; and
5. The registrant's other certifying officers and I have disclosed, based on our most recent evaluation of internal control over financial reporting, to the registrant's auditors and the audit committee of registrant's board of directors (or persons performing the equivalent functions):
 - a) all significant deficiencies and material weaknesses in the design or operation of internal control over financial reporting which are reasonably likely to adversely affect the registrant's ability to record, process, summarize and report financial information; and
 - b) any fraud, whether or not material, that involves management or other employees who have a significant role in the registrant's internal control over financial reporting.

Date: September 13, 2012

/s/ **CHRISTOPHER J. EPERJESY**
Christopher J. Eperjesy
Vice President - Finance,
Chief Financial Officer and Treasurer

EXHIBIT 32a

**CERTIFICATION PURSUANT TO
18 U.S.C. SECTION 1350,
AS ADOPTED PURSUANT TO
SECTION 906 OF THE SARBANES-OXLEY ACT OF 2002**

In connection with the Annual Report of Twin Disc, Incorporated (the "Company") on Form 10-K for the fiscal year ending June 30, 2012, as filed with the Securities and Exchange Commission as of the date hereof (the "Report"), I, Michael E. Batten, Chairman and Chief Executive Officer of the Company, certify, pursuant to 18 U.S.C. Section 1350, as adopted pursuant to Section 906 of the Sarbanes-Oxley Act of 2002, that, to the best of my knowledge:

- (1) the Report fully complies with Section 13(a) of the Securities Exchange Act of 1934, and
- (2) the information contained in the report fairly presents, in all material respects, the financial condition and results of operations of the Company.

Date: September 13, 2012

/s/ **MICHAEL E. BATTEN**
Michael E. Batten
Chairman and Chief Executive Officer

EXHIBIT 32b

**CERTIFICATION PURSUANT TO
18 U.S.C. SECTION 1350,
AS ADOPTED PURSUANT TO
SECTION 906 OF THE SARBANES-OXLEY ACT OF 2002**

In connection with the Annual Report of Twin Disc, Incorporated (the "Company") on Form 10-K for the fiscal year ending June 30, 2012, as filed with the Securities and Exchange Commission as of the date hereof (the "Report"), I, Christopher J. Eperjesy, Vice President – Finance, Chief Financial Officer and Treasurer of the Company, certify, pursuant to 18 U.S.C. Section 1350, as adopted pursuant to Section 906 of the Sarbanes-Oxley Act of 2002, that, to the best of my knowledge:

- (1) the Report fully complies with Section 13(a) of the Securities Exchange Act of 1934, and
- (2) the information contained in the report fairly presents, in all material respects, the financial condition and results of operations of the Company.

Date: September 13, 2012

/s/ **CHRISTOPHER J. EPERJESY**
Christopher J. Eperjesy
Vice President – Finance,
Chief Financial Officer and Treasurer

DIRECTORS

MICHAEL E. BATTEN

Chairman and Chief Executive Officer

JOHN H. BATTEN

President and Chief Operating Officer

MICHAEL DOAR

Chairman, Chief Executive Officer and President
Hurco Companies, Inc.

(A global manufacturer of machine tools)
Indianapolis, Indiana

MALCOLM F. MOORE

Chairman

Digi-Star, LLC

(A provider of weighing systems for Precision Agriculture)
Fort Atkinson, Wisconsin

Chief Executive Officer

Port Royal Partners, LLC

(An enterprise focusing on investments in
the marine industry)
Naples, Florida

DAVID B. RAYBURN

Retired President and Chief Executive Officer

Modine Manufacturing Company

(A manufacturer of heat exchange equipment)

Racine, Wisconsin

MICHAEL C. SMILEY

Chief Financial Officer

Zebra Technologies Corporation

(A global provider of asset management solutions)

Lincolnshire, Illinois

HAROLD M. STRATTON II

Chairman

STRATTEC SECURITY CORPORATION

(A manufacturer of security and access control
products for the global automotive industry)

Milwaukee, Wisconsin

DAVID R. ZIMMER

Managing Partner

Stonebridge Equity, LLC

(A merger, acquisition and finance value consulting firm)

Troy, Michigan

OFFICERS

MICHAEL E. BATTEN

Chairman and Chief Executive Officer

JOHN H. BATTEN

President and Chief Operating Officer

CHRISTOPHER J. EPERJESY

Vice President – Finance, Chief Financial Officer
and Treasurer

JAMES E. FEIERTAG

Executive Vice President

DEAN J. BRATEL

Vice President – Engineering

HENRI-CLAUDE FABRY

Vice President – International Distribution

DENISE L. WILCOX

Vice President – Human Resources

THOMAS E. VALENTYN

General Counsel and Secretary

JEFFREY S. KNUTSON

Corporate Controller

CORPORATE DATA

ANNUAL MEETING

Twin Disc Corporate Offices
Racine, Wisconsin
2:00 P.M.
October 19, 2012

SHARES TRADED

NASDAQ: Symbol TWIN

ANNUAL REPORT ON SECURITIES AND EXCHANGE COMMISSION FORM 10-K

Single copies of the Company's 2012 Annual Report on Securities and Exchange Commission Form 10-K, including exhibits, will be provided without charge to shareholders after September 13, 2012, upon written request directed to Secretary, Twin Disc, Incorporated, 1328 Racine Street, Racine, Wisconsin 53403.

TRANSFER AGENT & REGISTRAR

Computershare/BNY Mellon Shareowner Services
480 Washington Boulevard
Jersey City, New Jersey 07310
Toll Free: 800-839-2614
Web: www.bnymellon.com/shareowner/isd

INDEPENDENT ACCOUNTANTS

PricewaterhouseCoopers LLP
Milwaukee, Wisconsin

CORPORATE OFFICES

Twin Disc, Incorporated
Racine, Wisconsin 53403
Telephone: (262) 638-4000

WHOLLY-OWNED SUBSIDIARIES

Twin Disc International S.A.
Nivelles, Belgium
Twin Disc Srl
Decima, Italy
Rolla SP Propellers SA
Novazzano, Switzerland
Twin Disc (Pacific) Pty. Ltd.
Brisbane, Queensland, Australia
Twin Disc (Far East) Ltd.
Singapore
Twin Disc (Far East) Pte. Ltd.
Singapore
Mill Log Equipment Co., Inc.
Coburg, Oregon
Mill Log Marine, Inc.
Coburg, Oregon
Mill Log Wilson Equipment Ltd.
Burnaby, British Columbia

Twin Disc Southeast, Inc.
Jacksonville, Florida
Vetus Italia Srl
Limite sull'Arno, Italy
Twin Disc Japan
Saitama, Japan
Twin Disc Power Transmission Private, Ltd.
Chennai, India

PARTIALLY-OWNED SUBSIDIARIES

Twin Disc Nico Co. Ltd.

MANUFACTURING FACILITIES

Racine, Wisconsin
Nivelles, Belgium
Decima, Italy
Novazzano, Switzerland
Limite sull'Arno, Italy

SALES OFFICES

Domestic
Racine, Wisconsin
Coburg, Oregon
Kent, Washington
Medley, Florida
Jacksonville, Florida
Tampa, Florida
Chesapeake, Virginia
Rock Hill, South Carolina
Foreign
Nivelles, Belgium
Brisbane, Australia
Perth, Australia
Singapore
Decima, Italy
Limite sull'Arno, Italy
Novazzano, Switzerland
Edmonton, Canada
Burnaby, Canada
Chennai, India
Saitama, Japan
Shanghai, China
Guangzhou, China

MANUFACTURING LICENSES

Hitachi-Nico Transmission Co., Ltd.
Tokyo, Japan

5-YEAR FINANCIAL SUMMARY

(In thousands of dollars, except where noted)	2012	2011	2010
STATEMENTS OF OPERATIONS AND COMPREHENSIVE INCOME (LOSS)			
Net sales	\$355,870	\$310,393	\$227,534
Costs and expenses, including marketing, engineering and administrative	310,999	275,677	224,449
Earnings from operations	44,871	34,716	3,085
Other expense	(115)	(2,687)	(1,363)
Earnings before income taxes and minority interest	44,756	32,029	1,722
Income taxes	18,446	13,064	992
Noncontrolling interest	(198)	(135)	(133)
Net earnings attributable to Twin Disc	26,112	18,830	597
BALANCE SHEET			
<i>Assets</i>			
Cash	15,701	20,167	19,022
Receivables, net	63,438	61,007	43,014
Inventories, net	103,178	99,139	72,799
Other current assets	14,844	14,855	12,615
Total current assets	197,161	195,168	147,450
Investments and other assets	40,315	48,161	53,363
Fixed assets less accumulated depreciation	66,356	65,791	58,243
Total assets	303,832	309,120	259,056
<i>Liabilities and Equity</i>			
Current liabilities	66,625	83,960	63,307
Long-term debt	28,401	25,784	27,211
Deferred liabilities	71,520	61,322	79,219
Shareholders' equity	136,264	137,085	88,460
Noncontrolling interest	1,022	969	859
Total liabilities and equity	303,832	309,120	259,056
<i>Comparative Financial Information</i>			
Per share statistics:			
Basic earnings	2.29	1.66	0.05
Diluted earnings	2.26	1.64	0.05
Dividends	0.34	0.30	0.28
Shareholders' equity	11.94	12.11	8.00
Return on equity	19.2%	13.7%	0.7%
Return on assets	8.6%	6.1%	0.2%
Return on sales	7.3%	6.1%	0.3%
Average shares outstanding	11,409,467	11,319,081	11,063,417
Diluted shares outstanding	11,555,561	11,462,562	11,159,282
Number of shareholder accounts	651	699	736
Number of employees	1,029	941	913
Additions to plant and equipment	13,733	12,028	4,456
Depreciation	9,947	9,110	9,021
Net working capital	130,536	111,208	84,143

2009	2008	2007	2006	2005	2004	2003
\$295,618	\$331,694	\$317,200	\$243,287	\$218,472	\$186,089	\$179,591
275,833	292,802	280,210	218,503	207,794	174,972	181,450
19,785	38,892	36,990	24,784	10,678	11,117	(1,859)
(1,740)	(3,644)	(2,661)	(1,732)	(1,186)	(485)	(823)
18,045	35,248	34,329	23,052	9,492	10,632	(2,682)
6,257	10,904	12,273	8,470	2,485	4,964	(300)
(286)	(92)	(204)	(129)	(97)	(25)	(12)
11,502	24,252	21,852	14,453	6,910	5,643	(2,394)
13,266	14,447	19,508	16,427	11,614	9,127	5,908
53,367	67,611	63,277	55,963	37,751	37,091	35,367
92,331	97,691	76,253	65,081	48,481	48,777	43,289
14,957	15,946	14,202	13,660	11,679	7,270	8,573
173,921	195,695	173,240	151,131	109,525	102,265	93,137
50,288	41,078	37,134	38,083	38,181	39,135	44,597
65,799	67,855	56,810	46,958	40,331	33,222	30,210
290,008	304,628	267,184	236,172	188,037	174,622	167,944
70,252	89,588	79,918	79,621	65,909	56,604	46,286
46,348	48,227	42,152	38,369	14,958	16,813	16,584
65,583	36,488	29,032	28,377	39,680	41,980	56,732
106,988	129,646	115,437	89,233	66,899	58,716	47,857
837	679	645	572	591	509	485
290,008	304,628	267,184	236,172	188,037	174,622	167,944
1.04	2.15	1.88	1.26	0.60	0.50	(0.21)
1.03	2.13	1.84	1.22	0.59	0.50	(0.21)
0.28	0.265	0.205	0.1825	0.175	0.175	0.175
9.72	11.55	9.93	7.74	5.85	5.22	14.97
10.7%	18.6%	18.9%	16.2%	10.3%	9.6%	(5.0)%
4.0%	8.0%	8.2%	6.1%	3.7%	3.2%	(1.4)%
3.9%	7.3%	6.9%	5.9%	3.2%	3.0%	(1.3)%
11,096,750	11,278,885	11,622,620	11,533,276	11,442,168	11,256,788	11,219,660
11,194,170	11,411,927	11,880,432	11,881,208	11,631,592	11,373,496	11,219,660
761	756	778	804	888	917	966
959	1,019	1,011	962	901	860	832
8,895	14,999	15,681	8,385	12,009	4,180	4,410
8,766	6,921	6,331	5,529	5,108	5,226	5,072
103,669	106,107	93,322	71,510	43,616	45,661	46,851



1328 Racine Street Racine, Wisconsin 53403 United States of America www.twindisc.com