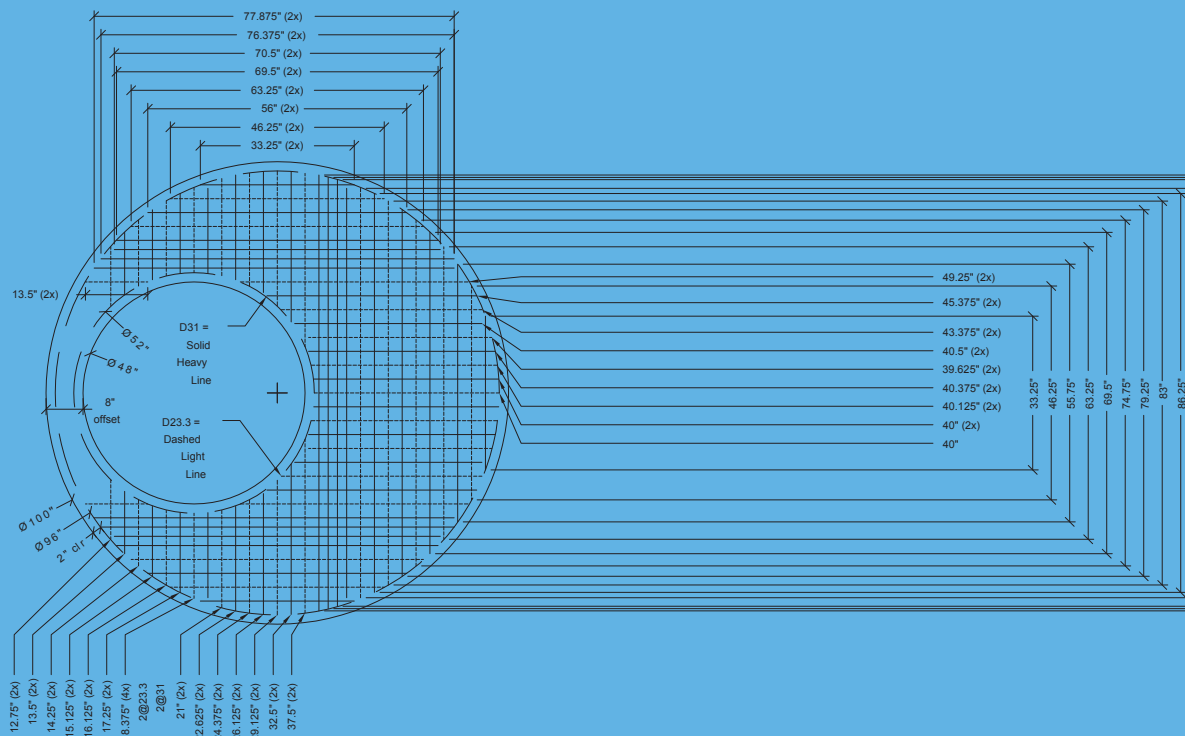


2016 ANNUAL REPORT



Insteel Industries is the nation's largest manufacturer of steel wire reinforcing products for concrete construction applications.



We manufacture and market prestressed concrete strand ("PC strand") and welded wire reinforcement, including engineered structural mesh, concrete pipe reinforcement and standard welded wire reinforcement. Our products are sold primarily to manufacturers of concrete products that are used in nonresidential construction. Headquartered in Mount Airy, North Carolina, we operate ten manufacturing facilities located in the United States.

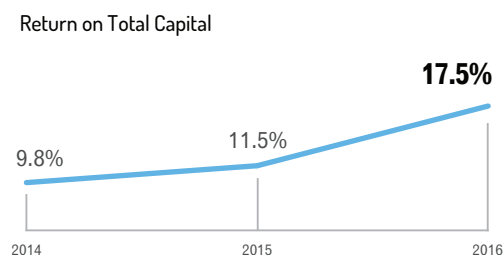
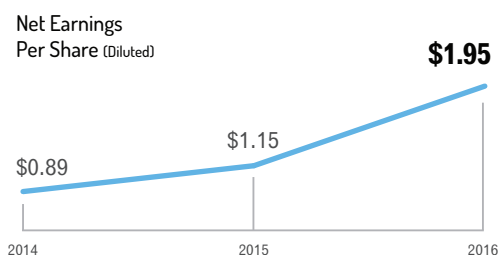
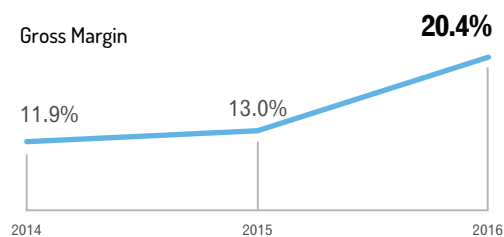
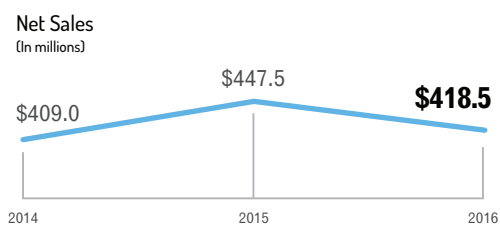
FINANCIAL HIGHLIGHTS

(Dollars in thousands, except per share amounts)

	2016	2015	2014
Operating Results:			
Net sales	\$418,547	\$447,504	\$408,978
Gross profit	85,188	58,333	48,773
% of net sales	20.4%	13.0%	11.9%
Net earnings	\$37,245	\$21,710	\$16,641
% of net sales	8.9%	4.9%	4.1%
Per Share Data:			
Net earnings:			
Basic	\$1.99	\$1.18	\$0.91
Diluted	1.95	1.15	0.89
Cash dividends declared	1.12	0.12	0.12
Returns:			
Return on total capital ⁽¹⁾	17.5%	11.5%	9.8%
Return on shareholders' equity ⁽²⁾	17.5%	11.5%	9.8%
Financial Position:			
Cash and cash equivalents	\$58,873	\$33,258	\$3,050
Total assets	292,892	260,239	256,795
Total debt	-	-	-
Shareholders' equity	224,566	200,215	178,883
Cash Flows:			
Net cash provided by operating activities	\$54,536	\$35,774	\$29,232
Acquisition of business	-	(480)	33,943
Capital expenditures	12,977	7,153	8,955
Depreciation and amortization	11,544	11,934	10,274
Cash dividends paid	20,859	2,211	2,193

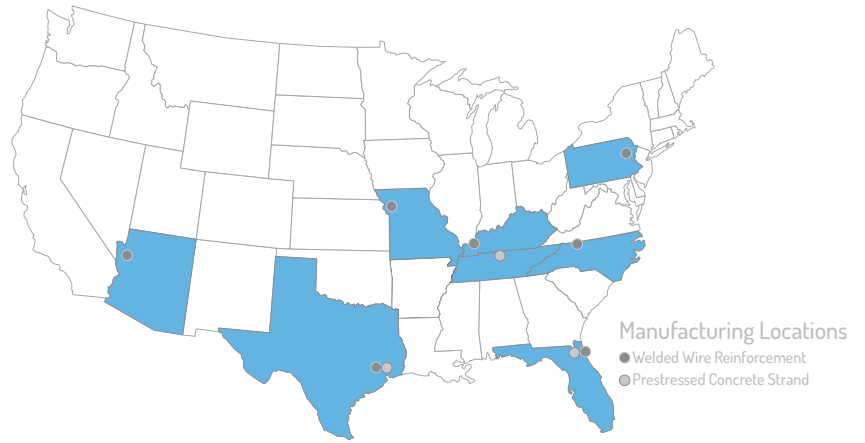
(1) Net earnings/(average total debt + average shareholders' equity).

(2) Net earnings/average shareholders' equity.



BUSINESS OVERVIEW

61% OF NET SALES



Welded Wire Reinforcement

Prefabricated reinforcement consisting of high-strength wires that are welded into specified patterns according to customer requirements, which may provide for alternative wire diameters, lengths and spacings. Wire intersections are electrically resistance-welded by computer-controlled continuous automatic welding lines that use pressure and heat to fuse longitudinal and cross wires in their proper position.

ENGINEERED STRUCTURAL MESH

Engineered made-to-order product that is used as the primary reinforcement in concrete elements or structures, frequently serving as a replacement for hot-rolled rebar.

Plant Locations

Dayton, TX • Hazleton, PA • Jacksonville, FL • Kingman, AZ • Mount Airy, NC • St. Joseph, MO

Customer Segments

Precast and Prestressed Producers • Rebar Fabricators • Distributors • Contractors

End Uses

Nonresidential Construction

CONCRETE PIPE REINFORCEMENT

Engineered made-to-order product that is used as the primary reinforcement in concrete pipe and box culverts for drainage and sewage systems, water treatment facilities and other related applications.

Plant Locations

Dayton, TX • Jacksonville, FL • Kingman, AZ • Mount Airy, NC • St. Joseph, MO

Customer Segments

Concrete Pipe and Precast Producers

End Uses

Nonresidential Construction • Residential Construction

STANDARD WELDED WIRE REINFORCEMENT

Secondary reinforcing product that is produced in standard styles for crack control applications in residential and light nonresidential construction, including driveways, sidewalks and a wide range of slab-on-grade applications.

Plant Locations

Dayton, TX • Hazleton, PA • Hickman, KY • Jacksonville, FL • Mount Airy, NC

Customer Segments

Rebar Fabricators • Distributors

End Uses

Nonresidential Construction • Residential Construction

39% OF NET SALES

Prestressed Concrete Strand

High-strength seven-wire reinforcement consisting of six wires that are continuously wrapped around a center wire forming a strand, which is then heat-treated while under tension. Provides tensile strength and compression forces in concrete elements and structures, allowing for the use of longer, thinner and lighter spans or sections. May be used in either pretensioned or posttensioned applications to reinforce bridges, parking decks, buildings, other concrete structures and concrete slabs for new homes in regions that have expansive soil.

Plant Locations

Gallatin, TN • Houston, TX • Sanderson, FL

Customer Segments

Precast Prestress Producers • Posttensioning Suppliers

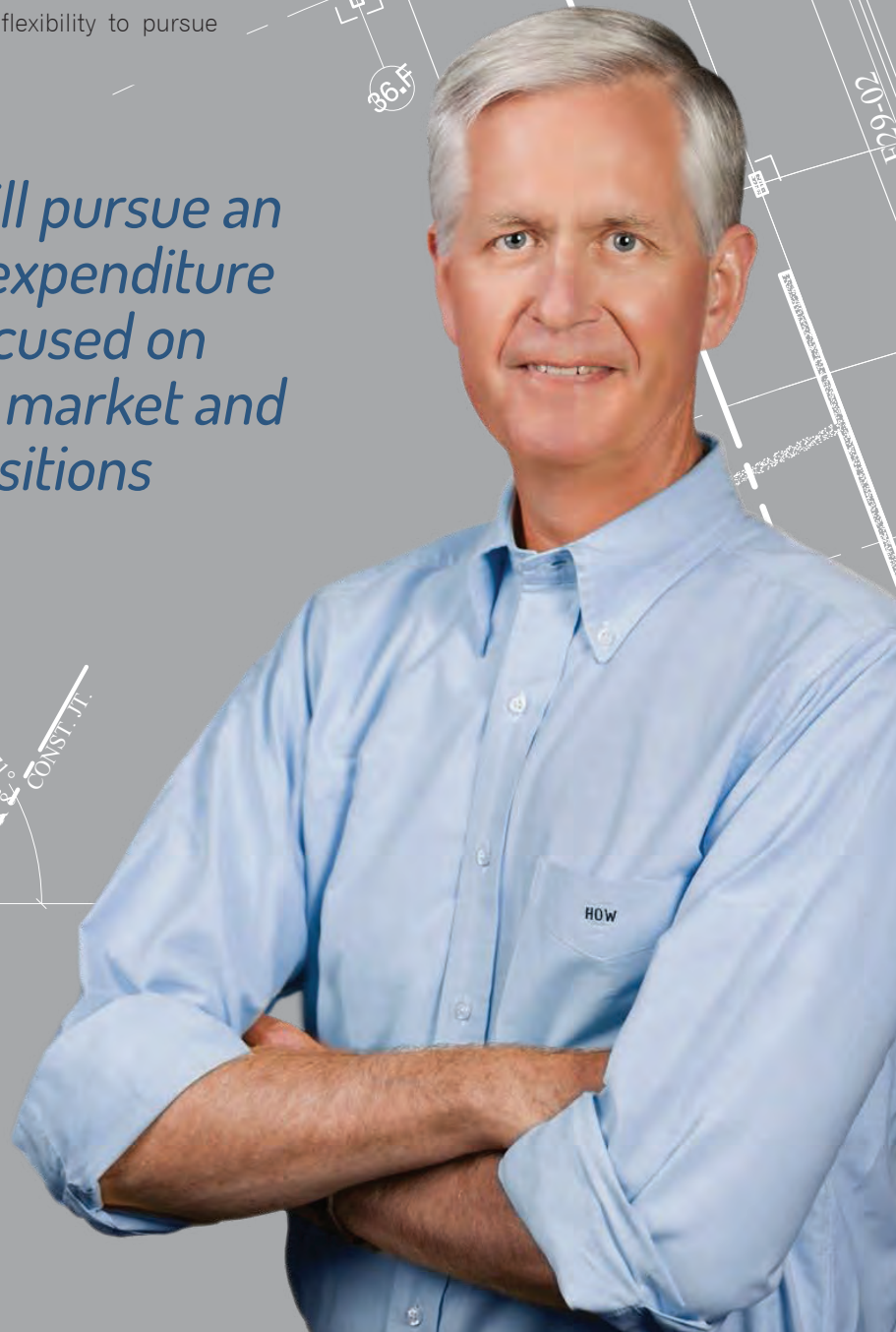
End Uses

Nonresidential Construction • Residential Construction

LETTER TO SHAREHOLDERS

During 2016, we delivered strong results for our shareholders and attractive returns on their capital despite the exceedingly slow recovery in the construction industry. We effectively executed our strategy for long-term growth, leveraging our market leadership positions across our product portfolio and strengthening our low cost producer position. We demonstrated the increased earnings power that has been created through our recent acquisitions of the second largest producers in both of our product lines and the strategic investments we have made in our facilities. And we maintained our strong balance sheet, providing us with the financial flexibility to pursue additional growth opportunities.

During 2017, we will pursue an ambitious capital expenditure program that is focused on strengthening our market and cost leadership positions



FINANCIAL RESULTS

Net sales for 2016 fell 6.5% from a year ago to \$418.5 million as a 2.6% increase in shipments (4.8% on a comparable basis adjusting for the extra week in the prior year) was offset by an 8.8% decline in average selling prices. Gross margin rose to 20.4% from 13.0% primarily due to widening spreads between selling prices and raw material costs and, to a lesser extent, lower unit conversion costs and the increase in shipments. The spread improvement was driven by the reduction in the cost of hot-rolled steel wire rod, our primary raw material, which exceeded the drop-off in selling prices. Net earnings increased to the second highest level in our history, rising to \$37.2 million, or \$1.95 per diluted share from \$21.7 million, or \$1.15 per diluted share in 2015. Our results for the year reflected a charge for the settlement and termination of a pension plan, which reduced pre-tax earnings by \$2.5 million and net earnings per share by \$0.09, eliminating our last defined benefit obligation.

In allocating our cash flow for the year, we continued to return capital to our shareholders in a disciplined manner and pursued investment opportunities that improved our costs and supported future growth. Cash flow from operations rose to \$54.5 million from \$35.8 million in 2015, which was used to fund \$20.9 million of dividend payments (a special cash dividend of \$1.00 per share and regular cash dividends totaling \$0.12 per share) and \$13.0 million of capital expenditures, and was primarily responsible for the \$25.6 million increase in our cash balance. We ended the year debt-free with \$58.9 million of cash on hand, or over \$3 a share, and no borrowings outstanding on our \$100 million revolving credit facility. Following the end of the fiscal year, we declared a special cash dividend of \$1.25 per share payable in January 2017.

ADDITION TO S&P SMALLCAP 600 INDEX

In November 2016, we achieved a significant milestone with our addition to the S&P SmallCap 600 Index. The index tracks the small-cap segment of the U.S. equity market and includes companies that meet specific criteria, including market capitalization, stock trading liquidity, public float and financial viability. We believe our inclusion in the index will enhance Insteel's visibility in the investment community and increase our trading volume, which should benefit our shareholders.

CAPITAL EXPENDITURE PROGRAM

During 2017, we will pursue an ambitious capital expenditure program that is focused on strengthening our market and cost leadership positions. Total outlays are expected to increase to up to \$25 million as we complete the expansion of our Houston, Texas PC strand facility, further develop our engineered structural mesh manufacturing capabilities with the addition of a new production line at our St. Joseph, Missouri facility, and continue to upgrade our production technology and information systems.

The Houston expansion involves the replacement of antiquated production lines and the addition of a new state-of-the-art raw material cleaning process. The investments we are making will remove a high cost bottleneck and realign the plant's capacity with the requirements of the Texas market to eliminate the excess freight costs we are incurring from backfilling the volume out of

our other strand facilities. We expect these improvements will reduce our annual costs by \$5 million beginning in our second fiscal quarter as we ramp up the plant's operating levels. Following the completion of the project, we will determine the appropriate timeline for adding a third strand production line to capitalize on the additional growth that is anticipated for the Texas market and further reduce our costs.

LOOKING AHEAD

As we enter 2017, we expect continued growth in our construction end-markets, which should support higher shipments and operating volumes, and additional reductions in our unit conversion costs through the considerable operating leverage at our facilities. We believe the federal funding provided for under the FAST ("Fixing America's Surface Transportation") Act will begin to have a more meaningful impact on infrastructure construction in the coming year. The longer duration of the bill provides improved funding visibility for states and municipalities which should favorably impact the project mix for Insteel by increasing the proportion of larger, longer-term projects that require the use of our products. We are also encouraged by the incoming administration's ambitious plans for increased infrastructure investment, which would serve as a catalyst for additional revenue growth over an extended period. In many of our markets, state and local infrastructure spending is expected to rise through various funding initiatives that have been undertaken, including fuel tax increases, bond financings and the redirection of other tax receipts. Although residential construction represents a smaller portion of our overall business, we should also benefit from continued growth in the housing market and the usual favorable effect that it has on certain segments of nonresidential construction.

As the nation's largest producer of steel wire reinforcing products for concrete construction applications, we are ideally positioned to benefit from the ongoing recovery in demand with the best footprint, operations and people in the industry supported by highly sophisticated information systems and technology. We will continue to focus on our strategic priorities in optimizing our costs, investing in our people and facilities, and fully capitalizing on the scale of our operations and the competitive advantages that are available to us. We will also pursue additional acquisitions in our core businesses that are synergistic and create value for our shareholders.

We look forward to building on the momentum we have developed over the past year and pursuing the opportunities that lie ahead of us. Thanks to our employees, customers and shareholders for their continued trust, confidence and support.

H.O. Woltz III
Chairman, President and
Chief Executive Officer

UNITED STATES
SECURITIES AND EXCHANGE COMMISSION

Washington, D.C. 20549

FORM 10-K

ANNUAL REPORT PURSUANT TO SECTION 13 OR 15(d) OF THE SECURITIES EXCHANGE ACT OF 1934
For the fiscal year ended October 1, 2016

OR
TRANSITION REPORT PURSUANT TO SECTION 13 OR 15(d) OF THE SECURITIES EXCHANGE ACT OF 1934
For the transition period from _____ to _____
Commission file number 1-9929



INSTEEL INDUSTRIES, INC.

(Exact name of registrant as specified in its charter)

North Carolina	56-0674867
<i>(State or other jurisdiction of incorporation or organization)</i>	<i>(I.R.S. Employer Identification No.)</i>
1373 Boggs Drive, Mount Airy, North Carolina 27030	
<i>(Address of principal executive offices) (Zip Code)</i>	
(336) 786-2141	
<i>Registrant's telephone number, including area code:</i>	

SECURITIES REGISTERED PURSUANT TO SECTION 12(b) OF THE ACT:	
Title of Each Class	Name of Each Exchange on Which Registered
Common Stock (No Par Value) (Preferred Share Purchase Rights are attached to and trade with the Common Stock)	The NASDAQ Stock Market LLC (NASDAQ Global Select Market)

SECURITIES REGISTERED PURSUANT TO SECTION 12(g) OF THE ACT:	
Preferred Share Purchase Rights (attached to and trade with the Common Stock)	
Title of Class	

Indicate by check mark	YES	NO				
• if the registrant is a well-known seasoned issuer, as defined in Rule 405 of the Securities Act.	<input type="checkbox"/>	<input checked="" type="checkbox"/>				
• if the registrant is not required to file reports pursuant to Section 13 or 15(d) of the Act.	<input type="checkbox"/>	<input checked="" type="checkbox"/>				
• whether the registrant (1) has filed all reports required to be filed by Section 13 or 15(d) of the Securities Exchange Act of 1934 during the preceding 12 months (or for such shorter period that the registrant was required to file such reports), and (2) has been subject to such filing requirements for the past 90 days.	<input checked="" type="checkbox"/>	<input type="checkbox"/>				
• whether the registrant has submitted electronically and posted on its corporate Web site, if any, every Interactive Data File required to be submitted and posted pursuant to Rule 405 of Regulation S-T (§ 232.405 of this chapter) during the preceding 12 months (or for such shorter period that the registrant was required to submit and post such files).	<input checked="" type="checkbox"/>	<input type="checkbox"/>				
• if disclosure of delinquent filers pursuant to Item 405 of Regulation S-K is not contained herein, and will not be contained, to the best of registrant's knowledge, in definitive proxy or information statements incorporated by reference in Part III of this Form 10-K or any amendment to the Form 10-K.	<input checked="" type="checkbox"/>	<input type="checkbox"/>				
• whether the registrant is a large accelerated filer, an accelerated filer, a non-accelerated filer, or a smaller reporting company. See the definitions of "large accelerated filer", "accelerated filer" and "smaller reporting company" in Rule 12b-2 of the Exchange Act. (Check one):	<table border="1" style="width: 100%;"> <tr> <td style="text-align: center;">Large accelerated filer <input type="checkbox"/></td> <td style="text-align: center;">Accelerated filer <input checked="" type="checkbox"/></td> <td style="text-align: center;">Non-accelerated filer <input type="checkbox"/> (Do not check if a smaller reporting company)</td> <td style="text-align: center;">Smaller reporting company <input type="checkbox"/></td> </tr> </table>		Large accelerated filer <input type="checkbox"/>	Accelerated filer <input checked="" type="checkbox"/>	Non-accelerated filer <input type="checkbox"/> (Do not check if a smaller reporting company)	Smaller reporting company <input type="checkbox"/>
Large accelerated filer <input type="checkbox"/>	Accelerated filer <input checked="" type="checkbox"/>	Non-accelerated filer <input type="checkbox"/> (Do not check if a smaller reporting company)	Smaller reporting company <input type="checkbox"/>			
• whether the registrant is a shell company (as defined in Rule 12b-2 of the Act).	<input type="checkbox"/>	<input checked="" type="checkbox"/>				

As of April 2, 2016 (the last business day of the registrant's most recently completed second quarter), the aggregate market value of the common stock held by non-affiliates of the registrant was \$507,817,830 based upon the closing sale price as reported on the NASDAQ Global Select Market. As of October 27, 2016, there were 18,975,641 shares of the registrant's common stock outstanding.

DOCUMENTS INCORPORATED BY REFERENCE

Certain portions of the registrant's proxy statement to be delivered to shareholders in connection with the 2017 Annual Meeting of Shareholders are incorporated by reference as set forth in Part III hereof.

Table of Contents

Cautionary Note Regarding Forward-Looking Statements.....	4
---	---

PART I **5**

ITEM 1 Business.....	5
ITEM 1A Risk Factors.....	8
ITEM 1B Unresolved Staff Comments.....	10
ITEM 2 Properties.....	10
ITEM 3 Legal Proceedings.....	11
ITEM 4 Mine Safety Disclosures.....	11
Executive Officers of the Company.....	11

PART II **12**

ITEM 5 Market for the Registrant's Common Equity, Related Shareholder Matters and Issuer Purchases of Equity Securities.....	12
ITEM 6 Selected Financial Data.....	14
ITEM 7 Management's Discussion and Analysis of Financial Condition and Results of Operations.....	14
ITEM 7A Quantitative and Qualitative Disclosures About Market Risk.....	21
ITEM 8 Financial Statements and Supplementary Data.....	22
ITEM 9 Changes in and Disagreements with Accountants on Accounting and Financial Disclosure.....	46
ITEM 9A Controls and Procedures.....	46
ITEM 9B Other Information.....	48

PART III **48**

ITEM 10 Directors, Executive Officers and Corporate Governance.....	48
ITEM 11 Executive Compensation.....	48
ITEM 12 Security Ownership of Certain Beneficial Owners and Management and Related Stockholder Matters.....	49
ITEM 13 Certain Relationships and Related Transactions, and Director Independence.....	49
ITEM 14 Principal Accounting Fees and Services.....	49

PART IV **50**

ITEM 15 Exhibits, Financial Statement Schedules.....	50
SIGNATURES	51
EXHIBIT INDEX	52

Cautionary Note Regarding Forward-Looking Statements

This report contains forward-looking statements within the meaning of the Private Securities Litigation Reform Act of 1995, particularly in the “Business,” “Risk Factors” and “Management’s Discussion and Analysis of Financial Condition and Results of Operations” sections of this report. When used in this report, the words “believes,” “anticipates,” “expects,” “estimates,” “appears,” “plans,” “intends,” “may,” “should,” “could” and similar expressions are intended to identify forward-looking statements. Although we believe that our plans, intentions and expectations reflected in or suggested by such forward-looking statements are reasonable, they are subject to a number of risks and uncertainties, and we can provide no assurances that such plans, intentions or expectations will be implemented or achieved. Many of these risks and uncertainties are discussed in the “Risk Factors” section of this report and are updated from time to time in our filings with the United States (“U.S.”) Securities and Exchange Commission (“SEC”).

All forward-looking statements attributable to us or persons acting on our behalf are expressly qualified in their entirety by these cautionary statements. All forward-looking statements speak only to the respective dates on which such statements are made and we do not undertake and specifically decline any obligation to publicly release the results of any revisions to these forward-looking statements that may be made to reflect any future events or circumstances after the date of such statements or to reflect the occurrence of anticipated or unanticipated events, except as may be required by law.

It is not possible to anticipate and list all risks and uncertainties that may affect our future operations or financial performance; however, they include, but are not limited to, the following:

- general economic and competitive conditions in the markets in which we operate;
- changes in the spending levels for nonresidential and residential construction and the impact on demand for our products;
- changes in the amount and duration of transportation funding provided by federal, state and local governments and the impact on spending for infrastructure construction and demand for our products;
- the cyclical nature of the steel and building material industries;
- credit market conditions and the relative availability of financing for us, our customers and the construction industry as a whole;
- fluctuations in the cost and availability of our primary raw material, hot-rolled carbon steel wire rod, from domestic and foreign suppliers;
- competitive pricing pressures and our ability to raise selling prices in order to recover increases in raw material or operating costs;
- changes in U.S. or foreign trade policy affecting imports or exports of steel wire rod or our products;
- unanticipated changes in customer demand, order patterns and inventory levels;
- the impact of fluctuations in demand and capacity utilization levels on our unit manufacturing costs;
- our ability to further develop the market for engineered structural mesh (“ESM”) and expand our shipments of ESM;
- legal, environmental, economic or regulatory developments that significantly impact our operating costs;
- unanticipated plant outages, equipment failures or labor difficulties; and
- the risks and uncertainties discussed herein under the caption “Risk Factors.”

PART I

ITEM 1 Business

General

Insteel Industries, Inc. (“we,” “us,” “our,” “the Company” or “Insteel”) is the nation’s largest manufacturer of steel wire reinforcing products for concrete construction applications. We manufacture and market prestressed concrete strand (“PC strand”) and welded wire reinforcement (“WWR”), including ESM, concrete pipe reinforcement (“CPR”) and standard welded wire reinforcement (“SWWR”). Our products are sold primarily to manufacturers of concrete products that are used in nonresidential construction. For fiscal 2016, we estimate that approximately 85% of our sales were related to nonresidential construction and 15% were related to residential construction.

Insteel is the parent holding company for two wholly-owned subsidiaries, Insteel Wire Products Company (“IWP”), an operating subsidiary, and Intercontinental Metals Corporation, an inactive subsidiary. We were incorporated in 1958 in the State of North Carolina.

Our business strategy is focused on: (1) achieving leadership positions in our markets; (2) operating as the lowest cost producer; and (3) pursuing growth opportunities in our core businesses that further our penetration of the markets we currently serve or expand our footprint. Headquartered in Mount Airy, North Carolina, we operate ten manufacturing facilities

that are all located in the U.S. in close proximity to our customers and raw material suppliers. Our growth strategy is focused on organic opportunities as well as acquisitions in existing or related markets that leverage our infrastructure and core competencies in the manufacture and marketing of concrete reinforcing products.

On August 15, 2014, we, through our wholly-owned subsidiary, IWP, purchased substantially all of the assets associated with the PC strand business of American Spring Wire Corporation (“ASW”) for a final adjusted purchase price of \$33.5 million (the “ASW Acquisition”). ASW manufactured PC strand at facilities located in Houston, Texas and Newnan, Georgia (see Note 4 to the consolidated financial statements). We acquired, among other assets, the accounts receivable and inventories related to ASW’s PC strand business, production equipment at its facilities in Houston, Texas and Newnan, Georgia, and the Newnan facility. We also entered into an agreement with ASW to lease the Houston facility with an option to purchase it in the future. Subsequent to the acquisition, we elected to consolidate our PC strand operations with the closure of the Newnan facility, which was completed in March 2015.

Products

Our operations are entirely focused on the manufacture and marketing of steel wire reinforcing products for concrete construction applications. Our concrete reinforcing products consist of two product lines: PC strand and WWR. Based on the criteria specified in Financial Accounting Standards Board (“FASB”) Accounting Standards Codification (“ASC”) Topic 280, Segment Reporting, we have one reportable segment.

PC strand is a high strength, seven-wire strand that is used to impart compression forces into precast concrete elements and structures, which may be either pretensioned or posttensioned, providing reinforcement for bridges, parking decks, buildings and other concrete structures. Its high tensile strength allows for the casting of longer spans and thinner sections. Pretensioned or “prestressed” concrete elements or structures are primarily used in nonresidential construction while posttensioned concrete elements or structures are used in both nonresidential and residential construction. For fiscal years 2016, 2015 and 2014, PC strand sales represented 39%, 43% and 38%, respectively, of our net sales.

WWR is produced as either a standard or a specially engineered reinforcing product for use in nonresidential and residential construction. We produce a full range of WWR products, including ESM, CPR and SWWR. ESM is an engineered made-to-order product that is used as the primary reinforcement for concrete elements or structures, frequently serving as a lower cost reinforcing solution than hot-rolled rebar. CPR is an engineered made-to-order product that is used as the primary reinforcement in concrete pipe, box culverts and precast manholes for drainage and sewage systems, water treatment facilities and other related applications. SWWR is a secondary reinforcing product that is produced in standard styles for crack control applications in residential and light nonresidential construction, including driveways, sidewalks and various slab-on-grade applications. For fiscal years 2016, 2015 and 2014, WWR sales represented 61%, 57% and 62%, respectively, of our net sales.

Marketing and Distribution

We market our products through sales representatives who are our employees. Our outside sales representatives are trained on the technical applications for our products and sell multiple product lines in their respective territories. We sell our products nationwide across the U.S. and, to a much lesser extent, into Canada, Mexico, and Central and

South America, delivering them primarily by truck, using common or contract carriers. The delivery method selected is dependent upon backhaul opportunities, comparative costs and customer service requirements.

Customers

We sell our products to a broad range of customers that includes manufacturers of concrete products, and to a lesser extent, distributors, rebar fabricators and contractors. In fiscal 2016, we estimate that approximately 70% of our net sales were to manufacturers of concrete products and 30% were to distributors, rebar fabricators and contractors. In many cases we are unable to identify the specific end use for our products as most of our customers sell products that are used for both

nonresidential and residential construction, and the same products can be used for different end uses. We did not have any customers that represented 10% or more of our net sales in fiscal years 2016, 2015 and 2014, and are not dependent upon a single customer or a few customers, the loss of which would have a material adverse effect on our business.

Backlog

Backlog for our business is minimal due to the relatively short lead times that are required by our customers. We believe that the majority of our firm orders as of the end of fiscal 2016 will be shipped during the first quarter of fiscal 2017.

Seasonality and Cyclicity

Demand in our markets is both seasonal and cyclical, driven by the level of construction activity, but can also be impacted by fluctuations in the inventory positions of our customers. From a seasonal standpoint, shipments typically reach their highest level of the year when weather conditions are the most conducive to construction activity. As a result, shipments and profitability are usually higher in the third and fourth

quarters of the fiscal year and lower in the first and second quarters. From a cyclical standpoint, construction activity and demand for our products is generally correlated with general economic conditions, although there can be significant differences between the relative strength of nonresidential and residential construction for extended periods.

Raw Materials

The primary raw material used to manufacture our products is hot-rolled carbon steel wire rod, which we purchase from both domestic and foreign suppliers. Wire rod can generally be characterized as a commodity product. We purchase several different grades and sizes of wire rod with varying specifications based on the diameter, chemistry, mechanical properties and metallurgical characteristics that are required for our products. High carbon grades of wire rod are required for the production of PC strand while low carbon grades are used to manufacture WWR.

Wire rod prices tend to fluctuate based on changes in scrap and other metallic prices for steel producers together with domestic and global market conditions. In most economic environments, domestic demand for wire rod exceeds domestic production capacity and imports of wire rod are necessary to satisfy the supply requirements of the U.S. market. Trade actions initiated by domestic wire rod producers can significantly impact the pricing and availability of imported wire rod, which during fiscal years 2016 and 2015 represented approximately 30% and 29%, respectively, of our total wire rod purchases. We believe

that our substantial wire rod requirements, desirable mix of sizes and grades, and strong financial condition represent a competitive advantage by making us a relatively more attractive customer to our suppliers.

Our ability to source wire rod from overseas suppliers is limited by domestic content requirements generally referred to as “Buy America” or “Buy American” laws that exist at both the federal and state levels. These laws generally prescribe a domestic “melt and cast” standard for purposes of compliance. Certain segments of the PC strand market and the majority of our CPR and ESM products are certified to customers to be in compliance with the domestic content regulations.

Selling prices for our products tend to be correlated with changes in wire rod prices. However, the timing and magnitude of the relative price changes varies depending upon market conditions and competitive factors. Ultimately the relative supply - demand balance in our markets and competitive dynamics determine whether our margins expand or contract during periods of rising or falling wire rod prices.

Competition

We are the nation's largest manufacturer of steel wire reinforcing products for concrete construction applications. Our markets are highly competitive based on price, quality and service. Some of our competitors, such as Nucor Corporation, Keystone Consolidated Industries, Inc. ("Keystone"), Oklahoma Steel and Wire, and Gerdau Long Products North America, are vertically integrated companies that produce both wire rod and concrete reinforcing products and offer multiple product lines over broad geographic areas. Other competitors are smaller independent companies that offer limited competition in certain markets. Our primary competitors for WWR products are Nucor Corporation, Gerdau Ameristeel Corporation, Engineered Wire Products, Inc. (a subsidiary of Keystone), Davis Wire Corporation, Oklahoma Steel & Wire Co., Inc., Concrete Reinforcements Inc. and Wire Mesh Corporation. Our primary competitors for PC strand are Sumiden Wire Products Corporation, Keystone and Wire Mesh Corporation. Import competition is also a significant factor in certain segments of the PC strand market that are not subject to "Buy America" requirements.

In response to irrationally-priced import competition from offshore PC strand suppliers, we have pursued trade cases when necessary as a means of ensuring that foreign producers were complying with the applicable trade laws and regulations. In 2003, we joined together with a coalition of domestic PC strand producers and filed petitions with the U.S. Department of Commerce (the "DOC") alleging that imports of PC strand from Brazil, India, Korea, Mexico and Thailand

were being "dumped" or sold in the U.S. at a price that was lower than fair value and had injured the domestic PC strand industry. The DOC ruled in our favor and imposed anti-dumping duties ranging from 12% up to 119%, which had the effect of limiting the participation of these countries in the domestic market. In 2010, we joined together with a coalition of domestic PC strand producers and filed petitions with the DOC alleging that imports of PC strand from China were being "dumped" or sold in the U.S. at a price that was lower than fair value and that subsidies were being provided to Chinese PC strand producers by the Chinese government, both of which had injured the domestic PC strand industry. The DOC ruled in our favor and imposed final countervailing duty margins ranging from 9% to 46% and anti-dumping margins ranging from 43% to 194%, which had the effect of limiting the continued participation of Chinese producers in the domestic market.

Quality and service expectations of customers have risen substantially over the years and are key factors that impact their selection of suppliers. Technology has become a critical competitive factor from the standpoint of manufacturing costs, quality and customer service capabilities. In view of our strong market positions, broad product offering and national footprint, technologically advanced manufacturing facilities, low-cost production capabilities, sophisticated information systems and financial strength and flexibility, we believe that we are well-positioned to compete favorably with other producers of our concrete reinforcing products.

Employees

As of October 1, 2016, we had 848 employees, none of which were represented by labor unions. In the event of production disruptions, we believe that our contingency plans would enable us to continue serving our customers, although there can be no assurances that a work slowdown or stoppage would not adversely impact our operating costs and financial results.

Product Warranties

Our products are used in applications that are subject to inherent risks, including performance deficiencies, personal injury, property damage, environmental contamination or loss of production. We warrant our products to meet certain specifications. Although actual or claimed

deficiencies from these specifications may give rise to claims, we do not maintain a reserve for warranties as the historical claims have been immaterial. We maintain product liability insurance coverage to minimize our exposure to such risks.

Environmental Matters

We believe that we are in compliance in all material respects with applicable environmental laws and regulations. We have experienced no material difficulties in complying with legislative or regulatory standards and believe that these standards have not materially impacted our financial position or results of operations. Although our future compliance with additional environmental requirements could necessitate

capital outlays, we do not believe these expenditures would ultimately have a material adverse effect on our financial position or results of operations. We expect to make capital outlays for environmental control processes associated with our expansion of the Houston facility during fiscal 2017, but do not expect these expenditures will have a material effect on our financial position or results of operations.

Available Information

Our annual report on Form 10-K, quarterly reports on Form 10-Q, current reports on Form 8-K and any amendments to these reports, are available at no cost on our web site at <http://investor.insteel.com/sec.cfm> and the SEC's web site at www.sec.gov as soon as reasonably practicable

after we file these reports electronically with, or furnish them to, the SEC. The information available on our web site and the SEC's web site is not incorporated into this report or any of our filings with the SEC.

ITEM 1A Risk Factors

An investment in our common stock involves risks and uncertainties. You should carefully consider the following risk factors, in addition to the other information contained in this annual report on Form 10-K, before deciding whether an investment in our common stock is suitable for you. The risk factors described below are not the only ones we face. There may be other risks and uncertainties that are currently unknown to us or that we currently consider to be immaterial that could adversely affect our business, results of operations, financial condition and cash flows.

Our business is cyclical and can be negatively impacted by prolonged economic downturns or tightening in the financial markets that reduce the level of construction activity and demand for our products.

Demand for our products is cyclical in nature and sensitive to changes in the economy and in the financial markets. Our products are sold primarily to manufacturers of concrete products that are used for a broad range of nonresidential and residential construction applications. Demand for our products is driven by the level of construction activity, which tends to be correlated with conditions in the general economy as well as other factors beyond our control. Tightening in the financial markets could adversely impact demand for our products by reducing the availability of financing to our customers and the construction industry as a whole and increasing the risk of payment defaults on our outstanding customer balances. Future prolonged periods of economic weakness or reduced availability of financing could have a material adverse impact on our business, results of operations, financial condition and cash flows.

Our business can be negatively impacted by reductions in the amount and duration of government funding for infrastructure projects that reduce the level of construction activity and demand for our products.

Certain of our products are used in the construction of highways, bridges and other infrastructure projects that are funded by federal, state and local governments. Reductions in the amount of funding for such projects or the period for which it is provided could have a material adverse impact on our business, results of operations, financial condition and cash flows.

Our operations are subject to seasonal fluctuations that may impact our cash flows.

Our shipments are typically lower in the first and second fiscal quarters due to the unfavorable impact of winter weather on construction activity during these periods and customer plant shutdowns associated with holidays. As a result, our cash flows may fluctuate from quarter to quarter due to these seasonal factors.

Demand for our products is highly variable and difficult to forecast due to our minimal backlog and unanticipated changes that can occur in customer order patterns or inventory levels.

Demand for our products is highly variable. The short lead times for customer orders and minimal backlog that characterize our business make it difficult to forecast the future level of demand for our products. In some cases, unanticipated softening in demand can be exacerbated by inventory reduction measures pursued by our customers, which may cause significant fluctuations in our sales, profitability and cash flows.

Our financial results can be negatively impacted by the volatility in the cost and availability of our primary raw material, hot-rolled carbon steel wire rod.

The primary raw material used to manufacture our products is hot-rolled carbon steel wire rod, which we purchase from both domestic and foreign suppliers. We do not use derivative commodity instruments to hedge our exposure to changes in the price of wire rod as such instruments are currently unavailable in the financial markets. Beginning in fiscal 2004, a tightening of supply in the rod market together with fluctuations in the raw material costs of rod producers resulted in increased price volatility which has continued through fiscal 2016. In response to the increased pricing volatility, wire rod producers have resorted to increasing the frequency of price adjustments, typically on a monthly basis as well as unilaterally changing the terms of prior commitments.

Although changes in our wire rod costs and selling prices tend to be correlated, we may be unable to fully recover increased rod costs through higher selling prices during weaker market environments, which would reduce our earnings and cash flows. Additionally, when raw material costs decline, our financial results may be negatively impacted if the selling prices for our products decrease to an even greater extent and if we are consuming higher cost material from inventory.

Our financial results can also be significantly impacted if raw material supplies are inadequate to satisfy our purchasing requirements. In addition, trade actions by domestic wire rod producers against offshore suppliers can have a considerable impact on the availability and cost of imported wire rod. The imposition of anti-dumping or countervailing duty margins by the DOC against exporting countries can have the effect of reducing or eliminating their activity in the domestic market, which is of increasing significance in view of the reductions in domestic wire rod production capacity that have occurred in recent years. If we were unable to obtain adequate and timely delivery of our raw material requirements, we may be unable to manufacture sufficient quantities of our products or operate our manufacturing facilities in an efficient manner, which could result in lost sales and higher operating costs.

Foreign competition could adversely impact our financial results.

Our PC strand business is subject to offshore import competition on an ongoing basis in that domestic production capacity is insufficient to satisfy domestic demand in most market environments. If we are unable to purchase raw materials and achieve manufacturing costs that are competitive with those of foreign producers, or if the margin and return requirements of foreign producers are substantially lower, our market share and profit margins could be negatively impacted. In response to irrationally-priced import competition from offshore PC strand suppliers, we have pursued trade cases when necessary as a means of ensuring that foreign producers were complying with the applicable trade laws and regulations. These trade cases have resulted in the imposition of duties which have had the effect of limiting the continued participation of certain countries in the domestic market. Trade law enforcement is critical to our ability to maintain our competitive position against foreign PC strand producers that engage in unlawful trade practices.

Our manufacturing facilities are subject to unexpected equipment failures, operational interruptions and casualty losses.

Our manufacturing facilities are subject to risks that may limit our ability to manufacture and sell our products, including unexpected equipment failures and catastrophic losses due to other unanticipated events such as fires, explosions, accidents, adverse weather conditions and transportation interruptions. For example, during fiscal 2014, a fire at our Gallatin, Tennessee PC strand manufacturing facility damaged a portion of the plant and required the temporary curtailment of operations until the necessary repairs were completed. Any such equipment failures or events can subject us to material plant shutdowns, periods of reduced production or unexpected downtime. Furthermore, the resolution of certain operational interruptions may require significant capital expenditures. Although our insurance coverage could offset the losses or expenditures relating to some of these events, our results of operations and cash flows could be negatively impacted to the extent that such claims were not covered or only partially covered by our insurance.

We are increasingly dependent on information technology systems that are susceptible to certain risks, including cybersecurity breaches and data leaks, which could adversely impact our business.

Our increasing reliance on technology systems and infrastructure heightens our potential vulnerability to system failure and malfunction, breakdowns due to natural disasters, human error, unauthorized access, power loss and other unforeseen events. Data privacy breaches by employees and others with or without authorized access to our systems poses risks that sensitive data may be permanently lost or leaked to the public or other unauthorized persons. With the growing use and rapid evolution of technology, not limited to cloud-based computing and mobile devices, there are additional risks of unintentional data leaks. There is also the risk of the theft of confidential information, intentional vandalism, industrial espionage, and a variety of cyber-attacks that could compromise our internal technology system and infrastructure, or result in data leaks in-house or at our third-party providers and business partners. Failures of technology or related systems, or an improper release of confidential information, could adversely impact our business or subject us to unexpected liabilities.

Our financial results could be adversely impacted by the escalation of our operating costs.

Consistent with the experience of other employers, our medical and workers' compensation costs have increased substantially in recent years and are expected to continue to rise. The Patient Protection and Affordable Care and Education Reconciliation Act of 2010 will have a significant impact on employers, health care providers, insurers and others associated with the health care industry and increase our employee health care costs. This legislation requires certain large employers like us to offer health care benefits to full-time employees or face potential annual penalties. To avoid these penalties, employers must offer health benefits providing a minimum level of coverage and limit the amount that employees are charged for the coverage. Provisions of this law have become and will become effective at various dates over the next several years and many of the regulations and guidance for the law have not been implemented. Due to the breadth and complexity of this law, the lack of implementing regulations and interpretive guidance and the phased-in nature of the requirement, we cannot predict the future effect of this law on our results. Any significant increases in the costs attributable to our self-insured health and workers' compensation plans could adversely impact our business, results of operations, financial condition and cash flows.

In addition, increasing prices for natural gas, electricity, fuel and consumables would adversely affect our manufacturing and distribution costs. For most of our business, we incur the fuel costs and surcharges associated with the delivery of products to our customers. Although we have previously implemented numerous measures to offset the impact of increases in these costs, there can be no assurance that such actions will be effective. If we are unable to pass these additional costs through by raising our selling prices, our financial results could be adversely impacted.

Our financial results could be adversely impacted by the impairment of goodwill.

Our balance sheet includes intangible assets, including goodwill and other separately identifiable assets primarily related to the ASW Acquisition, and we may acquire additional intangible assets in connection with future acquisitions. We are required to review goodwill for impairment on an annual basis, or more frequently if certain indicators of permanent impairment arise such as, among other things, a decline in our stock price and market capitalization and lower than projected operating results and cash flows. If our review determines that goodwill has been impaired, the impaired portion would have to be written-off during that period which could have an adverse effect on our business and financial results.

Our capital resources may not be adequate to provide for our capital investment and maintenance expenditures if we were to experience a substantial downturn in our financial performance.

Our operations are capital intensive and require substantial recurring expenditures for the routine maintenance of our equipment and facilities. Although we expect to finance our business requirements through internally generated funds or from borrowings under our \$100.0 million revolving credit facility, we cannot provide any assurances these resources will be sufficient to support our business. A material adverse change in our operations or financial condition could limit our ability to borrow funds under our credit facility, which could further adversely impact our liquidity and financial condition. Any significant

future acquisitions could require additional financing from external sources that may not be available on favorable terms, which could adversely impact our operations, growth plans, financial condition and results of operations.

Environmental compliance and remediation could result in substantially increased capital investments and operating costs.

Our business is subject to numerous federal, state and local laws and regulations pertaining to the protection of the environment that could require substantial increases in capital investments and operating costs. These laws and regulations, which are constantly evolving, are becoming increasingly stringent and the ultimate impact of compliance is not always clearly known or determinable because regulations under some of these laws have not yet been promulgated or are undergoing revision.

Our stock price can be volatile, often in connection with matters beyond our control.

Equity markets in the U.S. have been increasingly volatile in recent years. During fiscal 2016, our common stock traded as high as \$37.22 and as low as \$16.19. There are numerous factors that could cause the price of our common stock to fluctuate significantly, including: variations in our financial results; changes in our business outlook and expectations for the construction industry; changes in market valuations of companies in our industry; and announcements by us, our competitors or industry participants that may be perceived to impact us or our operations.

ITEM 1B Unresolved Staff Comments

None.

ITEM 2 Properties

Our corporate headquarters and IWP's sales and administrative offices are located in Mount Airy, North Carolina. At October 1, 2016, we operated ten manufacturing facilities located in Dayton, Texas; Gallatin, Tennessee; Hazleton, Pennsylvania; Hickman, Kentucky; Houston, Texas; Jacksonville, Florida; Kingman, Arizona; Mount Airy, North Carolina; Sanderson, Florida; and St. Joseph, Missouri.

We own all of our real estate except for the facility located in Houston, which we currently lease from ASW with an option to purchase in the future. We believe that our properties are in good operating condition and that our machinery and equipment have been well maintained. We also believe that our manufacturing facilities are suitable for their intended purposes and have capacities adequate to satisfy the current and projected demand for our products.

ITEM 3 Legal Proceedings

We are involved in lawsuits, claims, investigations and proceedings, including commercial, environmental and employment matters, which arise in the ordinary course of business. We do not anticipate that the ultimate cost to resolve these matters will have a material adverse effect on our financial position, results of operations or cash flows.

ITEM 4 Mine Safety Disclosures

Not applicable.

Executive Officers of the Company

Our executive officers are as follows:

Name	Age	Position
H.O. Woltz III	60	President, Chief Executive Officer and Chairman of the Board
Michael C. Gazmarian	57	Vice President, Chief Financial Officer and Treasurer
James F. Petelle	66	Vice President - Administration and Secretary
Richard T. Wagner	57	Vice President and General Manager of IWP

H. O. Woltz III, 60, was elected Chief Executive Officer in 1991 and has been employed by us and our subsidiaries in various capacities since 1978. He was named President and Chief Operating Officer in 1989. He served as our Vice President from 1988 to 1989 and as President of Rappahannock Wire Company, formerly a subsidiary of our Company, from 1981 to 1989. Mr. Woltz has been a Director since 1986 and also serves as President of Insteel Wire Products Company. Mr. Woltz served as President of Florida Wire and Cable, Inc., formerly a subsidiary of our Company, until its merger with Insteel Wire Products Company in 2002. Mr. Woltz serves on the Executive Committee of our Board of Directors and was elected Chairman of the Board in 2009.

Michael C. Gazmarian, 57, was elected Vice President, Chief Financial Officer and Treasurer in February 2007. He had previously served as Chief Financial Officer and Treasurer since 1994, the year he joined us. Before joining us, Mr. Gazmarian had been employed by Guardian Industries Corp., a privately-held manufacturer of glass, automotive and building products, since 1986, serving in various financial capacities.

James F. Petelle, 66, joined us in October 2006. He was elected Vice President and Assistant Secretary on November 14, 2006 and Vice President - Administration and Secretary on January 12, 2007. He was previously employed by Andrew Corporation, a publicly-held manufacturer of telecommunications infrastructure equipment, having served as Secretary from 1990 to May 2006, and Vice President - Law from 2000 to October 2006.

Richard T. Wagner, 57, joined us in 1992 and has served as Vice President and General Manager of the Concrete Reinforcing Products Business Unit of our subsidiary, Insteel Wire Products Company, since 1998. In February 2007, Mr. Wagner was appointed Vice President of the parent company, Insteel Industries, Inc. From 1977 until 1992, Mr. Wagner served in various positions with Florida Wire and Cable, Inc., a manufacturer of PC strand and galvanized strand products that was later acquired by us in 2000.

The executive officers listed above were elected by our Board of Directors at its annual meeting held February 11, 2016 for a term that will expire at the next annual meeting or until their successors are elected and qualify. The next meeting at which officers will be elected is expected to be February 7, 2017.

PART II

ITEM 5 Market for Registrant's Common Equity, Related Shareholder Matters and Issuer Purchases of Equity Securities

Our common stock is listed on the NASDAQ Global Select Market under the symbol "IIN" and has been trading on NASDAQ since September 28, 2004. As of October 25, 2016, there were 675 shareholders of record. The following table summarizes the high and low sales prices as reported on the NASDAQ Global Select Market and the cash dividends per share declared in fiscal 2016 and 2015:

	Fiscal 2016			Fiscal 2015		
	High	Low	Cash Dividends	High	Low	Cash Dividends
First Quarter	\$ 25.78	\$ 16.19	\$ 1.03	\$ 24.85	\$ 19.05	\$ 0.03
Second Quarter	32.05	18.72	0.03	24.44	18.60	0.03
Third Quarter	32.11	25.40	0.03	22.85	18.15	0.03
Fourth Quarter	37.22	28.33	0.03	19.79	14.61	0.03

We currently pay a quarterly cash dividend of \$0.03 per share. In addition to the regular quarterly cash dividend, we paid a special cash dividend of \$1.00 per share in the first quarter of fiscal 2016. While we intend to pay regular quarterly cash dividends for the foreseeable future, the declaration and payment of future dividends, if any, are discretionary and will be subject to determination by our Board

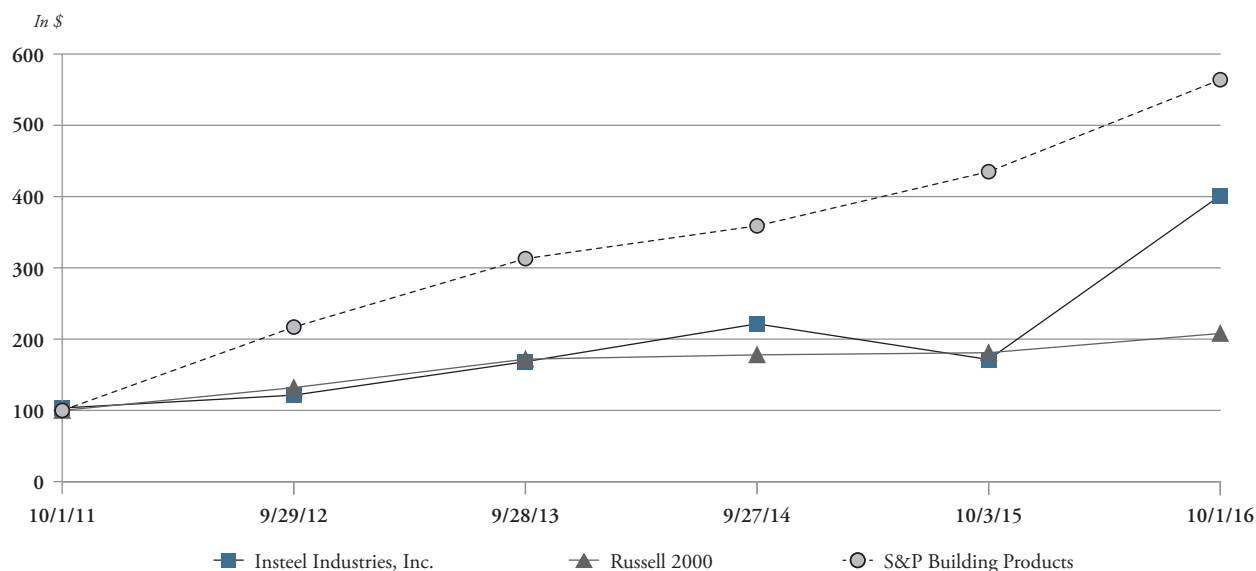
of Directors each quarter after taking into account various factors, including general business conditions and our financial condition, operating results, cash requirements and expansion plans. See Note 8 of the consolidated financial statements for additional discussion with respect to restrictions on our ability to make dividend payments under the terms of our revolving credit facility.

Stock Performance Graph

The graph below compares the cumulative total shareholder return on our common stock with the cumulative total return of the Russell 2000 Index and the S&P Building Products Index for the five years ended October 1, 2016. The graph and table assume that \$100 was

invested on October 1, 2011 in our common stock and in each of the two indices and the reinvestment of all dividends. Cumulative total shareholder returns for our common stock, the Russell 2000 Index and the S&P Building Products Index are based on our fiscal year.

Comparison of Five-Year Cumulative Return for Insteel Industries, Inc.,
the Russell 2000 Index and the S&P Building Products Index



	Fiscal Year Ended					
	10/1/11	9/29/12	9/28/13	9/27/14	10/3/15	10/1/16
Insteel Industries, Inc.	\$ 100.00	\$ 117.74	\$ 165.21	\$ 217.81	\$ 168.23	\$ 398.19
Russell 2000	100.00	131.91	171.55	178.30	180.52	208.44
S&P Building Products	100.00	217.28	312.58	359.14	434.90	564.12

Issuer Purchases of Equity Securities

Information regarding our share repurchase authorization is discussed in Note 19 to our consolidated financial statements and incorporated herein by reference.

Rights Agreement

Information regarding our Rights Agreement is discussed in Note 17 to our consolidated financial statements and incorporated herein by reference.

ITEM 6 Selected Financial Data

Financial Highlights

<i>(In thousands, except per share amounts)</i>	Year Ended				
	(52 weeks) October 1, 2016	(53 weeks) October 3, 2015	(52 weeks) September 27, 2014	(52 weeks) September 28, 2013	(52 weeks) September 29, 2012
Net sales	\$ 418,547	\$ 447,504	\$ 408,978	\$ 363,896	\$ 363,303
Net earnings	37,245	21,710	16,641	11,735	1,809
Net earnings per share (basic)	1.99	1.18	0.91	0.65	0.10
Net earnings per share (diluted)	1.95	1.15	0.89	0.64	0.10
Cash dividends declared	1.12	0.12	0.12	0.37	0.12
Total assets	292,892	260,239	256,795	212,649	208,552
Total debt	-	-	-	-	11,475
Shareholders' equity	224,566	200,215	178,883	161,056	149,500

As summarized more fully in Item 7 below, on August 15, 2014, we, through our wholly-owned subsidiary, IWP, purchased substantially all the assets associated with the PC strand business of ASW. This transaction may materially affect the comparability of the information reflected in the selected financial data presented in this Item 6.

ITEM 7 Management's Discussion and Analysis of Financial Condition and Results of Operations

The matters discussed in this section include forward-looking statements that are subject to numerous risks. You should carefully read the "Cautionary Note Regarding Forward-Looking Statements" and "Risk Factors" in this Form 10-K.

Overview

Our operations are entirely focused on the manufacture and marketing of concrete reinforcing products for the concrete construction industry. Our business strategy is focused on: (1) achieving leadership positions in our markets; (2) operating as the lowest cost producer; and (3) pursuing growth opportunities within our core businesses that further our penetration of the markets we currently serve or expand our footprint.

On August 15, 2014, we, through our wholly-owned subsidiary, IWP, purchased substantially all of the assets associated with the PC strand business of ASW for a final adjusted purchase price of \$33.5 million.

ASW manufactured PC strand at facilities located in Houston, Texas and Newnan, Georgia (see Note 4 to the consolidated financial statements). We acquired, among other assets, the accounts receivable and inventories related to ASW's PC strand business, production equipment at its facilities in Houston, Texas and Newnan, Georgia, and the Newnan facility. We also entered into an agreement to lease the Houston facility from ASW with an option to purchase it in the future. Subsequent to the acquisition, we elected to consolidate our PC strand operations with the closure of the Newnan facility, which was completed in March 2015.

Critical Accounting Policies

Our consolidated financial statements have been prepared in accordance with accounting principles generally accepted in the United States ("GAAP"). Our discussion and analysis of our financial condition and results of operations are based on these consolidated financial statements. The preparation of our consolidated financial statements requires the application of these accounting principles in addition to certain estimates and judgments based on current available information, actuarial estimates, historical results and other assumptions believed to be reasonable. Actual results could differ from these estimates.

The following critical accounting policies are both important to the depiction of our financial condition and results of operations and require judgments, assumptions and estimates.

Revenue recognition. We recognize revenue from product sales when products are shipped and risk of loss and title has passed to the customer. Sales taxes collected from customers are excluded from revenues and recorded on a net basis.

Concentration of credit risk. Financial instruments that subject us to concentrations of credit risk consist principally of cash and cash equivalents and trade accounts receivable. Our cash is concentrated primarily at one financial institution, which at times exceeds federally insured limits. We are exposed to credit risk in the event of default by institutions in which our cash and cash equivalents are held and by customers to the extent of the amounts recorded on the balance sheet. We invest excess cash primarily in money market funds, which are highly liquid securities that bear minimal risk.

Most of our accounts receivable are due from customers that are located in the U.S. and are generally not secured by collateral depending upon the creditworthiness of the account. We provide an allowance for doubtful accounts based upon our assessment of the credit risk of specific customers, historical trends and other information. There is no disproportionate concentration of credit risk.

Allowance for doubtful accounts. We maintain allowances for doubtful accounts for estimated losses resulting from the potential inability of our customers to make required payments on outstanding balances owed to us. Significant management judgments and estimates are used in establishing the allowances. These judgments and estimates consider such factors as the financial position, cash flows and payment history of our customers as well as current and expected business conditions. It is reasonably likely that actual collections will differ from our estimates, which may result in increases or decreases in the allowances. Adjustments to the allowances may also be required if there are significant changes in the financial condition of our customers.

Inventory valuation. We periodically evaluate the carrying value of our inventory. This evaluation includes assessing the adequacy of allowances for losses in the normal course of operations, providing for excess and obsolete inventory, and ensuring that inventory is valued at the lower of cost or estimated net realizable value. Our evaluation considers such factors as the cost of inventory, future demand, our historical experience and market conditions. In assessing the realization of inventory values, we are required to make judgments and estimates regarding future market conditions. Because of the subjective nature of these judgments and estimates, it is reasonably likely that actual outcomes will differ from our estimates. Adjustments to these reserves may be required if actual market conditions are substantially different than the assumptions underlying our estimates.

Long-lived assets. We review long-lived assets, which consist principally of property, plant and equipment and finite-lived intangibles, for impairment whenever events or changes in circumstances indicate that the carrying value of the asset may not be fully recoverable. Recoverability of long-lived assets to be held and used is measured based on the future net undiscounted cash flows expected to be generated by the related asset or asset group. If it is determined that an impairment loss has been incurred, the impairment loss is recognized in the period in which it is incurred and is calculated based on the difference between the carrying value and the present value of estimated future net cash flows or comparable market values. Assets to be disposed of by sale are recorded at the lower of carrying value or fair value less selling cost when we have committed to a disposal plan, and are reported separately as assets held for sale on our balance sheet. Unforeseen events and changes in circumstances and market conditions could negatively affect the value of assets and result in an impairment charge.

Goodwill. Goodwill is tested annually for impairment and whenever events or circumstances change that would make it more likely than not that an impairment may have occurred. We perform our annual impairment analysis as of the first day of the fourth quarter each fiscal year, which involves comparing the current estimated fair value of the reporting unit to its recorded value, including goodwill.

We perform a qualitative assessment to determine whether it is more likely than not that the fair value of the reporting unit is less than its carrying amount. It may be necessary to perform a quantitative analysis where a discounted cash flow model is used to determine the current estimated fair value of the reporting unit. Key assumptions used to determine the fair value of the reporting unit as part of our annual testing (and any required interim testing) include: (a) expected cash flows for the five-year period following the testing date; (b) an estimated terminal value using a terminal year growth rate based on the growth prospects of the reporting unit; (c) a discount rate based on our estimated after-tax weighted average cost of capital; and (d) a probability-weighted scenario approach by which varying cash flows are assigned to alternative scenarios based on their likelihood of occurrence. In developing these assumptions, we consider historical and anticipated future results, general economic and market conditions, the impact of planned business and operational strategies and all available information at the time the fair value of the reporting unit is estimated.

We monitor our operating results throughout the year to determine if events or changes in circumstances warrant any interim impairment testing. Otherwise, goodwill will be subject to the required annual impairment test during our fourth quarter. Changes in the judgments and estimates underlying our analysis of goodwill for possible impairment, including the expected future operating cash flows and discount rate, could reduce our estimated fair value in the future and result in an impairment of goodwill. There was no goodwill impairment loss recognized in fiscal 2016.

Self-insurance. We are self-insured for certain losses relating to medical and workers' compensation claims. Self-insurance claims filed and claims incurred but not reported are accrued based upon our estimates of the discounted ultimate cost for uninsured claims incurred using actuarial assumptions followed by the insurance industry and historical experience. These estimates are subject to a high degree of variability based upon future inflation rates, litigation trends, changes in benefit levels and claim settlement patterns. Because of uncertainties related to these factors as well as the possibility of changes in the underlying facts and circumstances, future adjustments to these reserves may be required.

Litigation. We are involved in claims, lawsuits and other proceedings, which arise in the ordinary course of business. The eventual outcome of such matters and the potential losses that we may ultimately incur are subject to a high degree of uncertainty. We record expenses for litigation when it is probable that a liability has been incurred and the amount of the loss can be reasonably estimated. We estimate the probability of such losses based on the advice of legal counsel, the outcome of similar litigation, the status of the lawsuits and other factors. Due to the numerous factors that enter into these judgments and assumptions, it is reasonably likely that actual outcomes will differ from our estimates. We monitor our potential exposure to these contingencies on a regular basis and may adjust our estimates as additional information becomes available or as there are significant developments.

PART II

ITEM 7 Management's Discussion and Analysis of Financial Condition and Results of Operations

Stock-based compensation. We account for stock-based compensation arrangements, including stock option grants and restricted stock units, in accordance with the provisions of ASC Topic 718, Compensation - Stock Compensation. Under these provisions, compensation cost is recognized based on the fair value of equity awards on the date of grant and amortized on a straight-line basis over the vesting period. We use the Monte Carlo valuation model to determine the fair value of stock options at the date of grant, which requires us to make assumptions for the expected term, volatility, dividend yield, risk-free interest rate and forfeiture rates. These assumptions are based on historical information and judgment regarding market factors and trends. If actual results differ from our assumptions and judgments used in estimating these factors, future adjustments to these estimates may be required.

Assumptions for employee benefit plan. We account for our supplemental employee retirement plans (each, a "SERP") in accordance with ASC Topic 715, Compensation - Retirement Benefits. Under the provisions of ASC Topic 715, we recognize net periodic pension cost and value liabilities based on certain actuarial assumptions, principally the assumed discount rate.

The discount rate we utilize for determining net periodic pension cost and the related benefit obligation for the SERPs is based, in part, on current interest rates earned on long-term bonds that receive one of the two highest ratings assigned by recognized rating agencies. Our discount rate assumptions are adjusted as of each valuation date to reflect current interest rates on such long-term bonds. The discount rate is used to determine the actuarial present value of the benefit obligations as of the valuation date as well as the interest component of the net periodic pension cost for the following year. The discount rate for the SERPs was 3.75% for fiscal 2016 and 4.25% for fiscal years 2015 and 2014.

The assumed discount rate is reevaluated annually. Changes in this assumption can result in the recognition of a materially different pension cost over different periods and a materially different liability amount in our consolidated financial statements. A reduction in the assumed discount rate generally results in an actuarial loss, as the actuarially-determined present value of estimated future benefit payments will increase. Conversely, an increase in the assumed discount rate generally results in an actuarial gain. However, any actuarial gains generated in future periods reduce the negative amortization effect of any cumulative unamortized actuarial losses, while any actuarial losses generated in future periods reduce the favorable amortization effect of any cumulative unamortized actuarial gains.

The projected benefit obligations and net periodic pension cost for the SERPs are based in part on expected increases in future compensation levels. Our assumption for the expected increase in future compensation levels is based upon our average historical experience and our intentions regarding future compensation increases, which generally approximates average long-term inflation rates.

We currently expect net periodic pension cost for fiscal 2017 to be \$856,000 for the SERPs. Cash contributions to the SERPs during fiscal 2017 are expected to be \$290,000.

A 0.25% decrease in the assumed discount rate for our SERPs would have increased our projected and accumulated benefit obligations as of October 1, 2016 by approximately \$290,000 and \$224,000, respectively, and our expected net periodic pension cost for fiscal 2017 by approximately \$30,000.

See Note 11 to our consolidated financial statements for the related accounting and disclosures surrounding our terminated pension plan, the Insteel Wire Products Company Retirement Income Plan for Hourly Employees, Wilmington, Delaware (the "Delaware Plan").

Recent Accounting Pronouncements

The nature and impact of recent accounting pronouncements is discussed in Note 3 to our consolidated financial statements and incorporated herein by reference.

Results of Operations

STATEMENTS OF OPERATIONS – SELECTED DATA

(Dollars in thousands)	Year Ended					
	October 1, 2016	Change	October 3, 2015	Change	September 27, 2014	
Net sales	\$ 418,547	(6.5%)	\$ 447,504	9.4%	\$ 408,978	
Gross profit	85,188	46.0%	58,333	19.6%	48,773	
<i>Percentage of net sales</i>	<i>20.4%</i>		<i>13.0%</i>		<i>11.9%</i>	
Selling, general and administrative expense	\$ 26,069	0.9%	\$ 25,824	10.5%	\$ 23,371	
<i>Percentage of net sales</i>	<i>6.2%</i>		<i>5.8%</i>		<i>5.7%</i>	
Pension plan settlement loss	\$ 2,539	N/M	\$ -	-	\$ -	
Restructuring charges, net	115	(67.0%)	349	(72.0%)	1,247	
Acquisition costs	-	-	-	(100.0%)	612	
Other expense (income), net	183	N/M	(1,113)	N/M	(1,907)	
Interest expense	158	(50.6%)	320	27.0%	252	
Interest income	(166)	N/M	(11)	10.0%	(10)	
Effective income tax rate	33.8%		34.1%		34.0%	
Net earnings	\$ 37,245	71.6%	\$ 21,710	30.5%	\$ 16,641	

"N/M" = not meaningful

2016 Compared with 2015

Net Sales

Net sales decreased 6.5% to \$418.5 million in 2016 from \$447.5 million in 2015 as a 2.6% increase in shipments was offset by an 8.8% reduction in average selling prices. Shipments for the prior year benefited from an extra week based on our fiscal calendar. On a pro forma basis adjusting both years to reflect the same 52-week period as 2016, the year-over-year shipment increase was 4.8%. The increase in shipments was primarily due to improved market conditions and increased demand for our products relative to the prior year. The decrease in average selling prices was driven by competitive pricing pressures.

Gross Profit

Gross profit increased 46.0% to \$85.2 million, or 20.4% of net sales, in 2016 from \$58.3 million, or 13.0% of net sales, in 2015. The year-over-year increase was primarily due to higher spreads between average selling prices and raw material costs (\$22.3 million), lower unit conversion costs (\$2.3 million) and the increase in shipments (\$1.6 million). The increase in spreads was driven by lower raw material costs (\$62.4 million) and freight expense (\$0.5 million) partially offset by lower average selling prices (\$40.6 million).

Selling, General and Administrative Expense

Selling, general and administrative expense ("SG&A expense") increased 0.9% to \$26.1 million, or 6.2% of net sales, in 2016 from \$25.8 million, or 5.8% of net sales, in 2015 primarily due to higher compensation expense (\$1.8 million) which was partially offset by lower employee benefit (\$657,000), bad debt (\$250,000) and legal expense (\$114,000), together with the relative year-over-year change in the cash surrender value of life insurance policies (\$441,000). The increase in compensation expense was largely driven by higher incentive plan expense due to our improved financial results in the current year. The decrease in employee benefit costs was primarily related to a reduction in high-dollar health insurance claims. The decrease in bad debt expense was due to favorable collections experience. The cash surrender value of life insurance policies increased \$480,000 in the current year period compared with \$39,000 in the prior year period due to the changes in the value of the underlying investments.

Pension Plan Settlement Loss

A pension plan settlement loss of \$2.5 million was incurred in 2016 related to the termination of the Delaware Plan.

Restructuring Charges, Net

Net restructuring charges of \$115,000 were incurred in 2016 related to the consolidation of our PC strand facilities, including equipment relocation costs (\$186,000), facility closure costs (\$89,000) and impairment charges related to the decommissioning of equipment (\$20,000) partially offset by a gain on the sale of equipment previously associated with the Newnan, Georgia PC strand facility (\$180,000). Net restructuring charges of \$349,000 were incurred in 2015 related to the closure of the Newnan facility, which included facility closure

costs (\$547,000), impairment charges related to the decommissioning of equipment (\$543,000), equipment relocation costs (\$79,000) and employee separation costs (\$75,000). These charges were partially offset by an \$895,000 gain on the sale of the real estate and certain of the equipment associated with the Newnan facility.

Other Expense (Income)

Other expense for 2016 was \$0.2 million compared with other income of \$1.1 million in 2015. The other income for 2015 was primarily related to a \$1.7 million net gain from insurance proceeds attributable to the replacement of property and equipment damaged in the fire at our Gallatin, Tennessee PC strand facility in 2014, partially offset by a \$0.7 million charge related to the settlement of a customer dispute.

Interest Expense

Interest expense decreased 50.6% to \$158,000 in 2016 from \$320,000 in 2015 primarily due to borrowings on our revolving credit facility during the prior year.

Income Taxes

Our effective income tax rate for 2016 decreased slightly to 33.8% from 34.1% in 2015 due to changes in permanent book versus tax differences.

Net Earnings

Net earnings increased to \$37.2 million (\$1.95 per diluted share) in 2016 from \$21.7 million (\$1.15 per diluted share) in 2015 primarily due to the increase in gross profit partially offset by higher SG&A expense and the pension settlement loss.

2015 Compared with 2014

Net Sales

Net sales increased 9.4% to \$447.5 million in 2015 from \$409.0 million in 2014 as a 10.0% increase in shipments was partially offset by a 0.5% reduction in average selling prices from the prior year levels. The increase in shipments was primarily driven by the additional business provided by the ASW Acquisition and the extra week in 2015 based on our fiscal calendar. On a pro forma basis adjusting both years to reflect the same 52-week period as 2014, the year-over-year shipment increase was 7.7%.

Gross Profit

Gross profit increased 19.6% to \$58.3 million, or 13.0% of net sales, in 2015 from \$48.8 million, or 11.9% of net sales, in 2014. The year-over-year increase was primarily due to wider spreads between average selling prices and raw material costs (\$11.4 million) and higher shipments (\$5.3 million) partially offset by higher unit conversion costs (\$7.0 million). The increase in spreads was driven by lower raw material costs (\$13.2 million) and freight expense (\$0.9 million) partially offset by lower average selling prices (\$2.7 million).

PART II

ITEM 7 Management's Discussion and Analysis of Financial Condition and Results of Operations

Selling, General and Administrative Expense

SG&A expense increased 10.5% to \$25.8 million, or 5.8% of net sales, in 2015 from \$23.4 million, or 5.7% of net sales, in 2014 primarily due to higher compensation expense (\$650,000), amortization expense associated with intangible assets (\$619,000) and employee benefit costs (\$435,000) together with the relative year-over-year change in the cash surrender value of life insurance policies (\$474,000). The increase in compensation expense was largely driven by higher incentive plan expense due to our improved financial results in 2015. The increase in amortization expense was primarily associated with the intangible assets that were acquired in connection with the ASW Acquisition. The increase in employee benefit costs was primarily due to higher employee health insurance and supplemental retirement plan expense. The cash surrender value of life insurance policies increased \$39,000 in the current year period compared with \$513,000 in the prior year period due to the changes in the value of the underlying investments.

Restructuring Charges, Net

Net restructuring charges of \$349,000 were incurred in 2015 compared with \$1.2 million in 2014. The net restructuring charges for 2015 were related to the closure of the Newnan, Georgia PC strand facility that was acquired through the ASW Acquisition, including \$547,000 for facility closure costs, \$543,000 for impairment charges related to the decommissioning of equipment, \$79,000 for equipment relocation costs and \$75,000 for employee separation costs. These charges were partially offset by an \$895,000 gain on the sale of the real estate and certain of the equipment associated with the Newnan facility. The net restructuring charges for 2014 were for employee separation costs associated with staffing reductions that were implemented in connection with the ASW Acquisition.

Acquisition Costs

Acquisition costs of \$0.6 million were incurred in 2014 for legal, accounting and other professional fees related to the ASW Acquisition, which were expensed as required under the provisions of ASC Topic 805, Business Combinations.

Other Expense (Income)

Other income for 2015 was \$1.1 million compared to \$1.9 million in 2014. The other income for 2015 was primarily related to a \$1.7 million net gain from insurance proceeds attributable to the replacement of property and equipment damaged in the fire at our Gallatin, Tennessee PC strand facility in 2014, partially offset by a \$0.7 million charge related to the settlement of a customer dispute. The other income for 2014 was largely related to a net gain from insurance proceeds attributable to the replacement of property and equipment damaged in the Gallatin fire.

Interest Expense

Interest expense increased 27.0% to \$320,000 in 2015 from \$252,000 in 2014 primarily due to higher average borrowings on our revolving credit facility during 2015.

Income Taxes

Our effective income tax rate for 2015 was essentially unchanged at 34.1% compared with 34.0% in 2014.

Net Earnings

Net earnings increased to \$21.7 million (\$1.15 per diluted share) in 2015 from \$16.6 million (\$0.89 per diluted share) in 2014 primarily due to the increase in gross profit partially offset by higher SG&A expense.

Liquidity and Capital Resources

SELECTED FINANCIAL DATA

<i>(Dollars in thousands)</i>	Year Ended		
	October 1, 2016	October 3, 2015	September 27, 2014
Net cash provided by operating activities	\$ 54,536	\$ 35,774	\$ 29,232
Net cash used for investing activities	(12,972)	(3,039)	(40,375)
Net cash used for financing activities	(15,949)	(2,527)	(1,247)
Cash and cash equivalents	58,873	33,258	3,050
Net working capital	126,704	105,532	79,407
Total debt	-	-	-
Percentage of total capital	-	-	-
Shareholders' equity	\$ 224,566	\$ 200,215	\$ 178,883
Percentage of total capital	100%	100%	100%
Total capital (total debt + shareholders' equity)	\$ 224,566	\$ 200,215	\$ 178,883

Operating Activities

Operating activities provided \$54.5 million of cash in 2016 primarily from net earnings adjusted for non-cash items and a reduction in the net working capital components of accounts receivable, inventories, and

accounts payable and accrued expenses. Net working capital provided \$3.2 million of cash due to a \$9.0 million increase in accounts payable and accrued expenses partially offset by a \$5.2 million increase in

inventories and a \$0.6 million increase in accounts receivable. The increases in accounts payable and accrued expenses and inventories were largely related to higher raw material purchases near the end of the period. The increase in accounts receivable was primarily due to an increase in days sales outstanding partially offset by lower selling prices.

Operating activities provided \$35.8 million of cash in 2015 primarily from net earnings adjusted for non-cash items and a reduction in the net working capital components of accounts receivable, inventories, and accounts payable and accrued expenses. Net working capital provided \$2.3 million of cash due to a \$15.9 million decrease in inventories and a \$4.3 million decrease in accounts receivable partially offset by a \$17.9 million decrease in accounts payable and accrued expenses. The decrease in inventories and accounts payable and accrued expenses was primarily due to lower raw material purchases and unit costs. The decrease in accounts receivable was related to lower selling prices.

Operating activities provided \$29.2 million of cash in 2014 primarily from net earnings adjusted for non-cash items and a reduction in the net working capital components of accounts receivable, inventories, and accounts payable and accrued expenses. Net working capital provided \$2.4 million of cash due to a \$21.3 million increase in accounts payable and accrued expenses partially offset by a \$16.8 million increase in inventories and a \$2.1 million increase in accounts receivable. The increases in accounts payable and accrued expenses and inventories were largely related to higher raw material purchases driven by the increase in sales. The increase in accounts receivable was primarily due to the increase in sales.

We may elect to adjust our operating activities as there are changes in the conditions in our construction end-markets, which could materially impact our cash requirements. While a downturn in the level of construction activity affects sales to our customers, it generally reduces our working capital requirements.

Investing Activities

Investing activities used \$13.0 million of cash in 2016, \$3.0 million in 2015 and \$40.4 million in 2014. In 2016, \$13.0 million of cash was used for capital expenditures. In 2015, \$7.2 million of cash was used for capital expenditures and \$1.5 million for the acquisition of an intangible asset from a competitor, which was partially offset by \$3.5 million of proceeds from the sale of the real estate and certain of the equipment associated with the Newnan facility, \$1.7 million of insurance proceeds related to the Gallatin fire and \$0.5 million of

post-closing adjustments associated with the ASW Acquisition. In 2014, \$33.9 million of cash was used to fund the ASW Acquisition and \$9.0 million for capital expenditures (including \$4.5 million to replace property and equipment damaged in the fire at the Gallatin facility), which was partially offset by \$2.7 million of insurance proceeds related to the Gallatin fire. Our investing activities are largely discretionary, providing us with the ability to significantly curtail outlays should future business conditions warrant that such actions be taken.

Financing Activities

Financing activities used \$15.9 million of cash in 2016, \$2.5 million in 2015 and \$1.2 million in 2014. In 2016, \$20.9 million of cash was used for dividend payments (including a special cash dividend of \$18.6 million, or \$1.00 per share, and regular cash dividends totaling \$2.3 million), which was partially offset by \$5.1 million of proceeds from the exercise of stock options. In 2015, \$2.2 million of cash was

used for dividend payments and \$0.2 million for financing costs that were incurred in connection with the amendment of our revolving credit facility. In 2014, \$2.2 million of cash was used for dividend payments, which was partially offset by \$1.1 million of proceeds from the exercise of stock options.

Cash Management

Our cash is principally concentrated at one financial institution, which at times exceeds federally insured limits. We invest excess cash primarily in money market funds, which are highly liquid securities that bear minimal risk.

Credit Facility

We have a \$100.0 million revolving credit facility (the "Credit Facility") that is used to supplement our operating cash flow and fund our working capital, capital expenditure, general corporate and growth requirements. In May 2015, we amended the Credit Facility to, among other changes, extend its maturity date from June 2, 2016 to May 13, 2020. Advances under the Credit Facility are limited to the lesser of the revolving loan commitment amount (currently \$100.0 million) or

a borrowing base amount that is calculated based upon a percentage of eligible receivables and inventories. As of October 1, 2016, no borrowings were outstanding on the Credit Facility, \$83.5 million of borrowing capacity was available and outstanding letters of credit totaled \$1.8 million (see Note 8 to the consolidated financial statements). As of October 3, 2015, there were no borrowings outstanding on the Credit Facility.

PART II

ITEM 7 Management's Discussion and Analysis of Financial Condition and Results of Operations

We believe that, in the absence of significant unanticipated cash demands, cash and cash equivalents, cash generated by operating activities and the borrowing availability provided under the Credit Facility will be sufficient to satisfy our expected requirements for working capital, capital expenditures, dividends and share repurchases, if any. We also expect to have access to the amounts available under our Credit Facility as required. However, should we experience future reductions in our operating cash flows due to weakening conditions in our construction end-markets and reduced demand from our customers, we may need to curtail capital and operating expenditures, delay or restrict share repurchases, cease dividend payments and/or realign our working capital requirements.

Should we determine, at any time, that we required additional short-term liquidity, we would evaluate the alternative sources of financing that were potentially available to provide such funding. There can be no assurance that any such financing, if pursued, would be obtained, or if obtained, would be adequate or on terms acceptable to us. However, we believe that our strong balance sheet, flexible capital structure and borrowing capacity available to us under our Credit Facility position us to meet our anticipated liquidity requirements for the foreseeable future.

Impact of Inflation

We are subject to inflationary risks arising from fluctuations in the market prices for our primary raw material, hot-rolled carbon steel wire rod, and, to a much lesser extent, freight, energy and other consumables that are used in our manufacturing processes. We have generally been able to adjust our selling prices to pass through increases in these costs or offset them through various cost reduction and productivity improvement initiatives. However, our ability to raise our selling prices depends on market conditions and competitive dynamics, and there may be periods during which we are unable to fully recover increases in our costs.

During the second half of 2016, wire rod prices escalated over most of the period due to increasing scrap costs for wire rod producers

which we were generally able to recover through price increases for our products. During 2015 and through the first half of 2016, wire rod prices declined through most of the period due to reductions in scrap costs for wire rod producers which favorably impacted our margins after the higher cost inventory we had purchased in earlier periods was consumed. During 2014, wire rod prices fluctuated within a narrower range, and inflation did not have a material impact on our sales or earnings. The timing and magnitude of any future increases in the prices for wire rod and the impact on selling prices for our products is uncertain at this time.

Off-Balance Sheet Arrangements

We do not have any material transactions, arrangements, obligations (including contingent obligations), or other relationships with unconsolidated entities or other persons, as defined by Item 303(a) (4) of Regulation S-K of the SEC, that have or are reasonably likely

to have a material current or future impact on our financial condition, results of operations, liquidity, capital expenditures, capital resources or significant components of revenues or expenses.

Contractual Obligations

Our contractual obligations and commitments at October 1, 2016 are as follows:

PAYMENTS DUE BY PERIOD

(In thousands)

Contractual obligations:	Total	Less Than 1 Year	1 - 3 Years	3 - 5 Years	More Than 5 Years
Raw material purchase commitments ⁽¹⁾	\$ 26,805	\$ 26,805	\$ -	\$ -	\$ -
Supplemental employee retirement plan obligations	20,938	290	680	482	19,486
Operating leases	2,416	1,364	1,002	50	-
Trade letters of credit	1,766	1,766	-	-	-
Commitment fee on unused portion of credit facility	1,149	313	626	210	-
Other unconditional purchase obligations ⁽²⁾	11,638	11,638	-	-	-
TOTAL	\$ 64,712	\$ 42,176	\$ 2,308	\$ 742	\$ 19,486

(1) Non-cancelable purchase commitments for raw materials.

(2) Contractual commitments for capital expenditures.

Outlook

As we look ahead to 2017, the recent macro indicators for our construction end-markets have been mixed and it is unclear whether

the softening in shipments we experienced during the latter part of the year will persist. Customer sentiment for the coming year remains

positive and we expect to benefit from the higher degree of funding certainty provided by the FAST Act together with increased infrastructure spending at the state and local level.

We continue to focus on the operational fundamentals of our business: closely managing and controlling our expenses; aligning our production schedules with demand in a proactive manner as there are changes in market conditions to minimize our cash operating costs; and pursuing further improvements in the productivity and effectiveness of all of our manufacturing, selling and administrative activities. We expect that our financial results will be favorably impacted by the realization of

additional operating synergies associated with the ASW Acquisition and the related reconfiguration of our PC strand operations following the anticipated completion of the expansion of our Houston plant by the end of the first quarter of fiscal 2017. As market conditions improve, we also expect gradually increasing contributions from the substantial investments we have made in our facilities in the form of reduced operating costs and additional capacity to support future growth (see “Cautionary Note Regarding Forward-Looking Statements” and “Risk Factors”). In addition, we will continue to pursue further acquisitions in our existing businesses that expand our penetration of markets we currently serve or expand our footprint.

ITEM 7A Quantitative and Qualitative Disclosures About Market Risk

Our cash flows and earnings are subject to fluctuations resulting from changes in commodity prices, interest rates and foreign exchange rates. We manage our exposure to these market risks through internally established policies and procedures and, when appropriate, through the use of derivative financial instruments. We do not use financial

instruments for trading purposes and are not a party to any leveraged derivatives. We monitor our underlying market risk exposures on an ongoing basis and believe we can modify or adapt our hedging strategies as necessary.

Commodity Prices

We are subject to significant fluctuations in the cost and availability of our primary raw material, hot-rolled carbon steel wire rod, which we purchase from both domestic and foreign suppliers. We negotiate quantities and pricing for both domestic and foreign wire rod purchases for varying periods (most recently monthly for domestic suppliers), depending upon market conditions, to manage our exposure to price fluctuations and to ensure adequate availability of material consistent with our requirements. We do not use derivative commodity instruments to hedge our exposure to changes in prices as such instruments are not currently available for wire rod. Our ability to acquire wire rod from foreign sources on favorable terms is impacted by fluctuations in foreign currency exchange rates, foreign taxes, duties, tariffs and other trade

actions. Although changes in our wire rod costs and selling prices tend to be correlated, in weaker market environments, we may be unable to fully recover increased rod costs through higher selling prices, which would reduce our earnings and cash flows. Additionally, when raw material costs decline, our financial results may be negatively impacted if the selling prices for our products decrease to an even greater extent and if we are consuming higher cost material from inventory. Based on our 2016 shipments and average wire rod cost reflected in cost of sales, a 10% increase in the price of wire rod would have resulted in a \$21.7 million decrease in our annual pre-tax earnings (assuming there was not a corresponding change in our selling prices).

Interest Rates

Although we did not have any balances outstanding on our Credit Facility as of October 1, 2016, future borrowings under the facility are subject to a variable rate of interest and are sensitive to changes in interest rates.

Foreign Exchange Exposure

We have not typically hedged foreign currency exposures related to transactions denominated in currencies other than U.S. dollars, as such transactions have not been material historically. We will occasionally hedge firm commitments for certain equipment purchases that are denominated in foreign currencies. The decision to hedge any such transactions is made by us on a case-by-case basis. There were no

forward contracts outstanding as of October 1, 2016. During 2016, a 10% increase or decrease in the value of the U.S. dollar relative to foreign currencies to which we are typically exposed would not have had a material impact on our financial position, results of operations or cash flows.

ITEM 8 Financial Statements and Supplementary Data

(a) Financial Statements

Consolidated Statements of Operations for the years ended October 1, 2016, October 3, 2015 and September 27, 2014.....	23
Consolidated Statements of Comprehensive Income for the years ended October 1, 2016, October 3, 2015 and September 27, 2014.....	24
Consolidated Balance Sheets as of October 1, 2016 and October 3, 2015	25
Consolidated Statements of Shareholders' Equity for the years ended October 1, 2016, October 3, 2015 and September 27, 2014.....	26
Consolidated Statements of Cash Flows for the years ended October 1, 2016, October 3, 2015 and September 27, 2014.....	27
Notes to Consolidated Financial Statements.....	28
Report of Independent Registered Public Accounting Firm – Consolidated Financial Statements	45
Schedule II – Valuation and Qualifying Accounts for the years ended October 1, 2016, October 3, 2015 and September 27, 2014.....	46
Report of Independent Registered Public Accounting Firm – Internal Control Over Financial Reporting.....	47

(b) Supplementary Data

Selected quarterly financial data for 2016 and 2015 is as follows:

FINANCIAL INFORMATION BY QUARTER (UNAUDITED)

(In thousands, except per share and price data)

	Quarter Ended			
	January 2	April 2	July 2	October 1
2016				
Operating results:				
Net sales	\$ 92,391	\$ 107,414	\$ 115,629	\$ 103,113
Gross profit	16,423	18,615	27,547	22,603
Net earnings	6,708	7,152	13,531	9,854
Net earnings per share:				
Basic	0.36	0.38	0.72	0.52
Diluted	0.36	0.38	0.71	0.51
	Quarter Ended			
	December 27	March 28	June 27	October 3
2015				
Operating results:				
Net sales	\$ 110,628	\$ 101,767	\$ 117,016	\$ 118,093
Gross profit	12,043	8,702	15,694	21,894
Net earnings	4,150	2,544	5,392	9,624
Net earnings per share:				
Basic	0.23	0.14	0.29	0.52
Diluted	0.22	0.14	0.29	0.51

Insteel Industries, Inc. and Subsidiaries

Consolidated Statements of Operations

<i>(In thousands, except per share amounts)</i>	Year Ended		
	October 1, 2016	October 3, 2015	September 27, 2014
Net sales	\$ 418,547	\$ 447,504	\$ 408,978
Cost of sales	333,359	389,171	360,205
Gross profit	85,188	58,333	48,773
Selling, general and administrative expense	26,069	25,824	23,371
Pension plan settlement loss	2,539	-	-
Restructuring charges, net	115	349	1,247
Acquisition costs	-	-	612
Other expense (income), net	183	(1,113)	(1,907)
Interest expense	158	320	252
Interest income	(166)	(11)	(10)
Earnings before income taxes	56,290	32,964	25,208
Income taxes	19,045	11,254	8,567
NET EARNINGS	\$ 37,245	\$ 21,710	\$ 16,641
Net earnings per share:			
Basic	\$ 1.99	\$ 1.18	\$ 0.91
Diluted	1.95	1.15	0.89
Cash dividends declared	1.12	0.12	0.12
Weighted average shares outstanding:			
Basic	18,754	18,418	18,257
Diluted	19,055	18,803	18,665

See accompanying notes to consolidated financial statements.

PART II**ITEM 8 Financial Statements and Supplementary Data****Insteel Industries, Inc. and Subsidiaries****Consolidated Statements of Comprehensive Income**

<i>(In thousands)</i>	Year Ended		
	October 1, 2016	October 3, 2015	September 27, 2014
Net earnings	\$ 37,245	\$ 21,710	\$ 16,641
Pension plan settlement loss, net of income taxes of (\$733)	1,197	-	-
Adjustment to defined benefit plan liability, net of income taxes of \$363, \$218 and \$140	(592)	(356)	(228)
Other comprehensive income (loss)	605	(356)	(228)
COMPREHENSIVE INCOME	\$ 37,850	\$ 21,354	\$ 16,413

See accompanying notes to consolidated financial statements.

Insteel Industries, Inc. and Subsidiaries

Consolidated Balance Sheets

<i>(In thousands, except per share amounts)</i>	October 1, 2016	October 3, 2015
ASSETS:		
Current assets:		
Cash and cash equivalents	\$ 58,873	\$ 33,258
Accounts receivable, net	47,389	46,782
Inventories	71,186	66,009
Other current assets	3,039	5,309
Total current assets	180,487	151,358
Property, plant and equipment, net	88,193	84,178
Intangibles, net	9,063	10,220
Goodwill	6,965	6,965
Other assets	8,184	7,518
TOTAL ASSETS	\$ 292,892	\$ 260,239
LIABILITIES AND SHAREHOLDERS' EQUITY:		
Current liabilities:		
Accounts payable	\$ 42,759	\$ 32,182
Accrued expenses	11,024	13,644
Total current liabilities	53,783	45,826
Other liabilities	14,543	14,198
Commitments and contingencies		
Shareholders' equity:		
Preferred stock, no par value		
Authorized shares: 1,000		
None issued	-	-
Common stock, \$1 stated value		
Authorized shares: 50,000		
Issued and outstanding shares: 2016, 18,976; 2015, 18,466	18,976	18,466
Additional paid-in capital	67,817	60,967
Retained earnings	139,314	122,928
Accumulated other comprehensive loss	(1,541)	(2,146)
Total shareholders' equity	224,566	200,215
TOTAL LIABILITIES AND SHAREHOLDERS' EQUITY	\$ 292,892	\$ 260,239

See accompanying notes to consolidated financial statements.

Insteel Industries, Inc. and Subsidiaries

Consolidated Statements of Shareholders' Equity

<i>(In thousands)</i>	Common Stock		Additional Paid-In Capital	Retained Earnings	Accumulated Other Comprehensive Income (Loss) ⁽¹⁾	Total Shareholders' Equity
	Shares	Amount				
Balance at September 28, 2013	18,185	\$ 18,185	\$ 55,452	\$ 88,981	\$ (1,562)	\$ 161,056
Net earnings				16,641		16,641
Other comprehensive loss ⁽¹⁾					(228)	(228)
Stock options exercised	129	129	1,000			1,129
Vesting of restricted stock units	63	63	(63)			-
Compensation expense associated with stock-based plans			2,661			2,661
Excess tax benefits from stock-based compensation			575			575
Restricted stock units and stock options surrendered for withholding taxes payable			(758)			(758)
Cash dividends declared				(2,193)		(2,193)
Balance at September 27, 2014	18,377	18,377	58,867	103,429	(1,790)	178,883
Net earnings				21,710		21,710
Other comprehensive loss ⁽¹⁾					(356)	(356)
Stock options exercised	24	24	176			200
Vesting of restricted stock units	65	65	(65)			-
Compensation expense associated with stock-based plans			2,298			2,298
Excess tax benefits from stock-based compensation			169			169
Restricted stock units and stock options surrendered for withholding taxes payable			(478)			(478)
Cash dividends declared				(2,211)		(2,211)
Balance at October 3, 2015	18,466	18,466	60,967	122,928	(2,146)	200,215
Net earnings				37,245		37,245
Other comprehensive income ⁽¹⁾					605	605
Stock options exercised	463	463	4,602			5,065
Vesting of restricted stock units	47	47	(47)			-
Compensation expense associated with stock-based plans			2,439			2,439
Excess tax benefits from stock-based compensation			1,717			1,717
Restricted stock units and stock options surrendered for withholding taxes payable			(1,861)			(1,861)
Cash dividends declared				(20,859)		(20,859)
Balance at October 1, 2016	18,976	\$ 18,976	\$ 67,817	\$ 139,314	\$ (1,541)	\$ 224,566

(1) Activity within accumulated other comprehensive income (loss) is reported net of related income taxes: 2014 \$140, 2015 \$218 and 2016 (\$370).

See accompanying notes to consolidated financial statements.

Insteel Industries, Inc. and Subsidiaries

Consolidated Statements of Cash Flows

<i>(In thousands)</i>	Year Ended		
	October 1, 2016	October 3, 2015	September 27, 2014
Cash Flows From Operating Activities:			
Net earnings	\$ 37,245	\$ 21,710	\$ 16,641
Adjustments to reconcile net earnings to net cash provided by operating activities			
Depreciation and amortization	11,544	11,934	10,274
Amortization of capitalized financing costs	65	89	102
Stock-based compensation expense	2,439	2,298	2,661
Deferred income taxes	536	333	41
Pension plan settlement loss, net of cash contributed	620	-	-
Asset impairment charges	20	543	-
Excess tax benefits from stock-based compensation	(1,717)	(169)	(575)
Loss (gain) on sale and disposition of property, plant and equipment	61	(2,652)	(1,629)
Increase in cash surrender value of life insurance policies over premiums paid	(480)	(39)	(512)
Net changes in assets and liabilities (net of assets and liabilities acquired):			
Accounts receivable, net	(607)	4,266	(2,084)
Inventories	(5,177)	15,890	(16,814)
Accounts payable and accrued expenses	9,009	(17,861)	21,333
Other changes	978	(568)	(206)
Total adjustments	17,291	14,064	12,591
Net cash provided by operating activities	54,536	35,774	29,232
Cash Flows From Investing Activities:			
Capital expenditures	(12,977)	(7,153)	(8,955)
Acquisition of intangible asset	-	(1,460)	-
Acquisition of business	-	480	(33,943)
Proceeds from sale of assets held for sale	180	3,537	-
Proceeds from fire loss insurance	-	1,713	2,732
Proceeds from sale of property, plant and equipment	60	132	1
Proceeds from surrender of life insurance policies	140	40	205
Increase in cash surrender value of life insurance policies	(375)	(328)	(415)
Net cash used for investing activities	(12,972)	(3,039)	(40,375)
Cash Flows From Financing Activities:			
Proceeds from long-term debt	328	60,978	19,215
Principal payments on long-term debt	(328)	(60,978)	(19,215)
Cash dividends paid	(20,859)	(2,211)	(2,193)
Cash received from exercise of stock options	5,065	200	1,129
Excess tax benefits from stock-based compensation	1,717	169	575
Payment of employee tax withholdings related to net share transactions	(1,861)	(478)	(758)
Financing costs	(11)	(207)	-
Net cash used for financing activities	(15,949)	(2,527)	(1,247)
Net increase (decrease) in cash and cash equivalents	25,615	30,208	(12,390)
Cash and cash equivalents at beginning of period	33,258	3,050	15,440
Cash and cash equivalents at end of period	\$ 58,873	\$ 33,258	\$ 3,050
Supplemental Disclosures of Cash Flow Information:			
Cash paid during the period for:			
Interest	\$ -	\$ 143	\$ 30
Income taxes, net	19,184	7,805	7,889
Non-cash investing and financing activities:			
Purchases of property, plant and equipment in accounts payable	1,746	570	680
Restricted stock units and stock options surrendered for withholding taxes payable	1,861	478	758
Post-closing purchase price adjustment for business acquired	-	-	45

See accompanying notes to consolidated financial statements.

Insteel Industries, Inc. and Subsidiaries

Notes to Consolidated Financial Statements

Years Ended October 1, 2016, October 3, 2015 and September 27, 2014

NOTE 1 Description of Business

Insteel Industries, Inc. (“we,” “us,” “our,” “Insteel” or “the Company”) is the nation’s largest manufacturer of steel wire reinforcing products for concrete construction applications. Insteel is the parent holding company for two wholly-owned subsidiaries, Insteel Wire Products Company (“IWP”), an operating subsidiary, and Intercontinental Metals Corporation, an inactive subsidiary. We manufacture and market prestressed concrete strand (“PC strand”) and welded wire reinforcement (“WWR”), including engineered structural mesh, concrete pipe reinforcement and standard welded wire reinforcement. Our products are primarily sold to manufacturers of concrete products and, to a lesser extent, distributors, rebar fabricators and contractors. We sell our products nationwide across the U.S. and, to a much lesser extent, into Canada, Mexico, and Central and South America.

On August 15, 2014, we, through our wholly-owned subsidiary, IWP, purchased substantially all of the assets associated with the PC strand business of American Spring Wire Corporation (“ASW”) (see Note 4 to the consolidated financial statements).

We have evaluated all subsequent events that occurred after the balance sheet date through the time of filing this Annual Report on Form 10-K and concluded there were no events or transactions during this period that required additional recognition or disclosure in our financial statements.

NOTE 2 Summary of Significant Accounting Policies

Fiscal year

Our fiscal year is the 52 or 53 weeks ending on the Saturday closest to September 30. Fiscal years 2016 and 2014 were 52-week periods and fiscal year 2015 was a 53-week period. All references to years relate to fiscal years rather than calendar years.

Principles of consolidation

The consolidated financial statements include the accounts of Insteel and our subsidiaries. All significant intercompany transactions and accounts have been eliminated in consolidation.

Use of estimates

The preparation of financial statements in conformity with accounting principles generally accepted in the United States (“U.S.” and such accounting principles, “GAAP”) requires us to make estimates and assumptions that affect the amounts reported in the financial statements and accompanying notes. There is no assurance that actual results will not differ from these estimates.

Cash equivalents

We consider all highly liquid investments purchased with original maturities of three months or less to be cash equivalents.

Concentration of credit risk

Financial instruments that subject us to concentrations of credit risk consist principally of cash and cash equivalents and trade accounts receivable. Our cash is principally concentrated at one financial institution, which at times exceeds federally insured limits. We are exposed to credit risk in the event of default by institutions in which our cash and cash equivalents are held and by customers to the extent of the amounts recorded on the balance sheet. We invest excess cash primarily in money market funds, which are highly liquid securities.

The majority of our accounts receivable are due from customers that are located in the U.S., and are generally not secured by collateral depending upon the creditworthiness of the account. We provide an allowance for doubtful accounts based upon our assessment of the credit risk of specific customers, historical trends and other information. We write off accounts receivable when they become uncollectible. There is no disproportionate concentration of credit risk.

Stock-based compensation

We account for stock-based compensation in accordance with the fair value recognition provisions of Financial Accounting Standards Board (“FASB”) Accounting Standards Codification (“ASC”) Topic 718, Compensation – Stock Compensation, which requires stock-based compensation expense to be recognized in net earnings based on the fair value of the award on the date of the grant. We determine the fair value of stock options issued by using a Monte Carlo valuation model at the grant date, which considers a range of assumptions including the expected term, volatility, dividend yield and risk-free interest rate.

Revenue recognition

We recognize revenue from product sales when products are shipped and risk of loss and title has passed to the customer. Sales taxes collected from customers are excluded from revenues and recorded on a net basis.

Shipping and handling costs

We include all of the outbound freight, shipping and handling costs associated with the shipment of products to customers in cost of sales. Any amounts paid by customers to us for shipping and handling are recorded in net sales on the consolidated statements of operations.

Inventories

Inventories are valued at the lower of weighted average cost (which approximates computation on a first-in, first-out basis) or market (net realizable value or replacement cost). The valuation of inventory includes the costs for material, labor and manufacturing overhead.

Property, plant and equipment

Property, plant and equipment are recorded at cost or fair market value in the case of the assets acquired through acquisitions, or otherwise at reduced values to the extent there have been asset impairment write-downs. Expenditures for maintenance and repairs are charged directly to expense when incurred, while major improvements are capitalized. Depreciation is computed for financial reporting purposes principally by use of the straight-line method over the following estimated useful lives: machinery and equipment, 3 - 15 years; buildings, 10 - 30 years; and land improvements, 5 - 15 years. Depreciation expense was approximately \$10.4 million in 2016, \$10.9 million in 2015 and \$9.8 million in 2014 and reflected in cost of sales and selling, general and administrative expense ("SG&A expense") in the consolidated statements of operations. Capitalized software is amortized over the shorter of the estimated useful life or 5 years and reflected in SG&A expense in the consolidated statements of operations. No interest costs were capitalized in 2016, 2015 and 2014.

Goodwill

Goodwill is the excess of cost over the fair value of net assets of businesses acquired. Goodwill is not amortized but is tested annually for impairment and whenever events or circumstances change that would make it more likely than not that an impairment may have occurred. We perform our annual impairment analysis as of the first day of the fourth quarter each year. The evaluation of impairment involves comparing the current estimated fair value of the reporting unit to its recorded value, including goodwill. We perform a qualitative assessment to determine whether it is more likely than not that the fair value of the reporting unit is less than its carrying amount. It may be necessary to perform a quantitative analysis where a discounted cash flow model is used to determine the current estimated fair value of the reporting unit. Key assumptions used to determine the fair value of the reporting unit as part of our annual testing (and any required interim testing) include: (a) expected cash flows for the five-year period following the testing date; (b) an estimated terminal value using a terminal year growth rate

based on the growth prospects of the reporting unit; (c) a discount rate based on our estimated after-tax weighted average cost of capital; and (d) a probability-weighted scenario approach by which varying cash flows are assigned to alternative scenarios based on their likelihood of occurrence. In developing these assumptions, we consider historical and anticipated future results, general economic and market conditions, the impact of planned business and operational strategies and all available information at the time the fair value of the reporting unit is estimated. Assumptions in estimating future cash flows are subject to a high degree of judgment and complexity. Changes in assumptions and estimates may affect the fair value of goodwill and could result in impairment charges in future periods. Based on the results of our impairment analysis, no goodwill impairment losses were recognized in the consolidated statements of operations for 2016. Subsequent to the analysis, there have been no events or circumstances that indicate any potential impairment of goodwill.

Other assets

Other assets consist principally of capitalized financing costs and the cash surrender value of life insurance policies. Capitalized financing costs are amortized using the straight-line method, which approximates the effective interest method over the term of the related credit agreement, and reflected in interest expense in the consolidated statements of operations.

Long-lived assets

Long-lived assets include property, plant and equipment and identifiable intangible assets with definite useful lives. Finite-lived intangible assets are amortized over their estimated useful lives. Our intangible assets consist of customer relationships, developed technology and know-how and non-competition agreements that are being amortized on a straight-line basis over their finite useful lives (see Note 7 to the consolidated financial statements). We assess the impairment of long-lived assets whenever events or changes in circumstances indicate that the carrying value may not be fully recoverable. When we determine that the carrying value of such assets may not be recoverable, we measure recoverability based on the undiscounted cash flows expected to be generated by the related asset or asset group. If it is determined that an impairment loss has occurred, the loss is recognized in the period in which it is incurred and is calculated as the difference between the carrying value and the present value of estimated future net cash flows or comparable market values.

During 2016 and 2015, we recorded \$20,000 and \$0.3 million, respectively, of impairment charges related to long-lived assets resulting from the consolidation of our PC strand operations with the closure of the Newnan, Georgia facility (see Note 5 to the consolidated financial statements). There were no impairment losses in 2014.

Fair value of financial instruments

The carrying amounts for cash and cash equivalents, accounts receivable, and accounts payable and accrued expenses approximate fair value because of their short maturities.

PART II

ITEM 8 Financial Statements and Supplementary Data

Income taxes

Income taxes are based on pretax financial accounting income. Deferred tax assets and liabilities are recognized for the expected tax consequences of temporary differences between the tax bases of assets and liabilities and their reported amounts. We assess the need to establish a valuation allowance against deferred tax assets to the extent we no longer believe it is more likely than not that the tax assets will be fully realized.

Earnings per share

Basic earnings per share ("EPS") are computed by dividing earnings available to common shareholders by the weighted average number of shares of common stock outstanding during the period. Diluted EPS are computed by dividing earnings available to common shareholders by the weighted average number of shares of common stock and other dilutive equity securities outstanding during the period. Securities that have the effect of increasing EPS are considered to be antidilutive and are not included in the computation of diluted EPS.

NOTE 3 Recent Accounting Pronouncements

Future Adoptions

In August 2016, the FASB issued Accounting Standards Update ("ASU") No. 2016-15 "Statement of Cash Flows Topic 230: Classification of Certain Cash Receipts and Cash Payments." ASU No. 2016-15 addresses how certain cash receipts and cash payments are presented and classified in the statement of cash flows with the objective of reducing existing differences in the presentation of these items. The amendments in ASU No. 2016-15 are to be adopted retrospectively and will become effective for us in the first quarter of fiscal 2019. The adoption of this update is not expected to have a material impact on our consolidated financial statements.

In March 2016, the FASB issued ASU No. 2016-09 "Compensation – Stock Compensation Topic 718: Improvements to Employee Share-Based Payment Accounting," which is intended to simplify the accounting for share-based payment transactions, including the income tax consequences, classification of awards as either equity or liabilities and classification on the statement of cash flows. ASU No. 2016-09 will become effective for us in the first quarter of fiscal 2018. We are evaluating the future effects of the adoption of this update on our consolidated financial statements.

In February 2016, the FASB issued ASU No. 2016-02 "Leases," which will replace the guidance in ASC Topic 840. ASU No. 2016-02 was issued to increase transparency and comparability among organizations by recognizing all lease transactions (with terms in excess of 12 months) on the balance sheet as a lease liability and a right-of-use asset. ASU

No. 2016-02 will become effective for us in the first quarter of fiscal 2020. We are evaluating the potential effects of the adoption of this update on our consolidated financial statements.

In July 2015, the FASB issued ASU No. 2015-11 "Simplifying the Measurement of Inventory," which requires that an entity measure inventory at the lower of cost and net realizable value. Net realizable value is the estimated selling price in the ordinary course of business less reasonably predictable costs of completion, disposal and transportation. ASU No. 2015-11 will become effective for us in the first quarter of fiscal 2018. We do not expect the adoption of this update will have a material effect on our consolidated financial statements.

In May 2014, the FASB issued ASU No. 2014-09 "Revenue from Contracts with Customers," which will replace nearly all existing revenue recognition guidance under GAAP. ASU No. 2014-09 provides that an entity recognize revenue when it transfers promised goods or services to customers in an amount that reflects the consideration to which the entity expects to be entitled in exchange for those goods or services. This update also requires additional disclosure about the nature, amount, timing and uncertainty of revenue and cash flows arising from customer contracts, including significant judgments and changes in judgments, and assets recognized from costs incurred to obtain or fulfill a contract. ASU No. 2014-09 allows for either full retrospective or modified retrospective adoption and will become effective for us in the first quarter of fiscal 2019. We are continuing to evaluate the potential effects of the adoption of this update on our consolidated financial statements and have not yet selected a transition method.

NOTE 4 Business Combination

On August 15, 2014, we purchased substantially all of the assets associated with the PC strand business of ASW for a final adjusted purchase price of \$33.5 million, net of post-closing adjustments of \$480,000 (the "ASW Acquisition").

ASW manufactured PC strand at facilities located in Houston, Texas and Newnan, Georgia. We acquired, among other assets, the accounts receivable and inventories related to ASW's PC strand business, the production equipment at its facilities in Houston and Newnan, and its facility in Newnan. We also entered into an agreement with ASW to lease the Houston facility with an option to purchase it in the future. In addition, we assumed certain of ASW's accounts payable and accrued liabilities related to its PC strand business.

Following is a summary of our final allocation of the adjusted purchase price to the fair values of the assets acquired and liabilities assumed as of the date of the ASW Acquisition:

<i>(In thousands)</i>	
Assets acquired:	
Accounts receivable	\$ 7,854
Inventories	6,292
Other current assets	786
Property, plant and equipment	8,638
Intangibles	8,530
Total assets acquired	\$ 32,100
Liabilities assumed:	
Accounts payable	\$ 3,240
Accrued expenses	2,362
Total liabilities assumed	5,602
NET ASSETS ACQUIRED	26,498
Purchase price	33,463
GOODWILL	\$ 6,965

In connection with the ASW Acquisition, we acquired intangible assets consisting of customer relationships, developed technology and know-how, and a non-competition agreement. The ASW Acquisition was accounted for as a business purchase pursuant to ASC Topic 805, Business Combinations. Under the provisions of ASC Topic 805, acquisition and integration costs are not included as components of consideration transferred, but are recorded as expenses in the period in which such costs are incurred (See Note 5 to the consolidated financial statements).

Following the ASW Acquisition, net sales of the ASW facilities in 2014 were approximately \$7.3 million. The actual amount of net sales specifically attributable to the ASW Acquisition, however, cannot be quantified due to the actions that we took to integrate ASW's facilities with our existing operations, which involved the reassignment of business across locations. We have determined that the presentation of ASW's earnings for 2014 is impractical due to the integration of ASW's facilities with our existing operations following the ASW Acquisition.

The following unaudited supplemental pro forma financial information reflects our combined results of operations had the ASW Acquisition occurred at the beginning of 2013. The pro forma information reflects certain adjustments related to the ASW Acquisition, including adjusted amortization and depreciation expense based on the fair value of the assets acquired, interest expense related to the borrowings on our revolving credit facility and an appropriate adjustment for the acquisition-related costs. The pro forma information does not reflect any operating efficiencies or potential cost savings that may result from the ASW Acquisition. Accordingly, this pro forma information is for illustrative purposes and is not intended to represent or be indicative of the actual results of operations of the combined company that may have been achieved had the ASW Acquisition occurred at the beginning of 2013, nor is it intended to represent or be indicative of future results of operations. The pro forma combined results of operations for the comparative prior year period are as follows:

<i>(In thousands)</i>	Year Ended September 27, 2014
Net sales	\$ 469,079
Earnings before income taxes	27,225
Net earnings	18,928

NOTE 5 Restructuring Charges and Acquisition Costs

Restructuring charges

Subsequent to the ASW Acquisition, in 2014, we incurred employee separation costs for staffing reductions associated with the acquisition. In February 2015, we elected to consolidate our PC strand operations with the closure of the Newnan, Georgia facility that had been acquired through the ASW Acquisition, which was completed in March 2015.

PART II

ITEM 8 Financial Statements and Supplementary Data

Following is a summary of the restructuring activities and associated costs that were incurred during 2016, 2015 and 2014:

<i>(In thousands)</i>	Asset Impairment Charges	Equipment Relocation Costs	Severance and Other Employee Separation Costs	Facility Closure Costs	Gain on Sale of Property and Equipment	Total
2016						
Liability as of October 3, 2015	\$ -	\$ -	\$ 735	\$ -	\$ -	\$ 735
Restructuring charges (recoveries)	20	186	-	89	(180)	115
Cash payments	-	(155)	(496)	(89)	-	(740)
Non-cash charges	(20)	-	-	-	180	160
LIABILITY AS OF OCTOBER 1, 2016	\$ -	\$ 31	\$ 239	\$ -	\$ -	\$ 270
2015						
Liability as of September 27, 2014	\$ -	\$ -	\$ 1,208	\$ -	\$ -	\$ 1,208
Restructuring charges (recoveries)	543	79	75	547	(895)	349
Cash payments	-	(79)	(548)	(547)	-	(1,174)
Non-cash charges	(543)	-	-	-	895	352
LIABILITY AS OF OCTOBER 3, 2015	\$ -	\$ -	\$ 735	\$ -	\$ -	\$ 735
2014						
Restructuring charges	\$ -	\$ -	\$ 1,247	\$ -	\$ -	\$ 1,247
Cash payments	-	-	(39)	-	-	(39)
LIABILITY AS OF SEPTEMBER 27, 2014	\$ -	\$ -	\$ 1,208	\$ -	\$ -	\$ 1,208

As of October 1, 2016, we recorded restructuring liabilities amounting to \$0.3 million on our consolidated balance sheet, including \$0.1 million in accounts payable and \$0.2 million in accrued expenses. As of October 3, 2015, we recorded restructuring liabilities amounting to \$0.7 million

on our consolidated balance sheet, including \$0.5 million in accrued expenses and \$0.2 million in other liabilities. We do not currently expect to incur any significant restructuring charges during 2017.

Acquisition costs

During 2014, we recorded \$0.6 million of acquisition-related costs associated with the ASW Acquisition for legal, accounting and other professional fees.

NOTE 6 Fair Value Measurements

Fair value is defined as the price that would be received to sell an asset or paid to transfer a liability in an orderly transaction between market participants at the measurement date. The authoritative guidance for fair value measurements establishes a three-level fair value hierarchy that encourages an entity to maximize the use of observable inputs and minimize the use of unobservable inputs when measuring fair value. The three levels of inputs used to measure fair value are as follows:

Level 1 - Quoted prices in active markets for identical assets or liabilities.

Level 2 - Observable inputs other than quoted prices included in Level 1, such as quoted prices for similar assets and liabilities in active markets.

Level 3 - Unobservable inputs that are supported by little or no market activity and that are significant to the fair value of the assets or liabilities, including certain pricing models, discounted cash flow methodologies and similar techniques that use significant unobservable inputs.

As of October 1, 2016 and October 3, 2015, we held financial assets that are required to be measured at fair value on a recurring basis, which are summarized below:

<i>(In thousands)</i>	Total	Quoted Prices in Active Markets (Level 1)	Observable Inputs (Level 2)
Year ended October 1, 2016:			
Current assets:			
Cash equivalents	\$ 58,846	\$ 58,846	\$ -
Other assets:			
Cash surrender value of life insurance policies	7,909	-	7,909
TOTAL	\$ 66,755	\$ 58,846	\$ 7,909
Year ended October 3, 2015:			
Current assets:			
Cash equivalents	\$ 32,843	\$ 32,843	\$ -
Other assets:			
Cash surrender value of life insurance policies	7,194	-	7,194
TOTAL	\$ 40,037	\$ 32,843	\$ 7,194

Cash equivalents, which include all highly liquid investments with original maturities of three months or less, are classified as Level 1 of the fair value hierarchy. The carrying amount of our cash equivalents, which consist of investments in money market funds, approximates fair value due to their short maturities. Cash surrender value of life insurance policies are classified as Level 2. The fair value of the life insurance policies was determined by the underwriting insurance company's valuation models and represents the guaranteed value we would receive upon surrender of these policies as of the reporting date.

As of October 1, 2016 and October 3, 2015, we had no nonfinancial assets that are required to be measured at fair value on a nonrecurring basis other than the assets and liabilities that were acquired from ASW at fair value (see Note 4 to the consolidated financial statements). The carrying amounts of accounts receivable, accounts payable and accrued expenses approximates fair value due to the short-term maturities of these financial instruments.

NOTE 7 Intangible Assets

The primary components of our intangible assets and the related accumulated amortization are as follows:

<i>(In thousands)</i>	Weighted-Average Useful Life (Years)	Gross	Accumulated Amortization	Net Book Value
Year ended October 1, 2016:				
Customer relationships	20.0	\$ 6,500	\$ (693)	\$ 5,807
Developed technology and know-how	20.0	1,800	(192)	1,608
Non-competition agreements	4.8	3,577	(1,929)	1,648
		\$ 11,877	\$ (2,814)	\$ 9,063
Year ended October 3, 2015:				
Customer relationships	20.0	\$ 6,500	\$ (369)	\$ 6,131
Developed technology and know-how	20.0	1,800	(102)	1,698
Non-competition agreements	4.8	3,577	(1,186)	2,391
		\$ 11,877	\$ (1,657)	\$ 10,220

Amortization expense for intangibles was \$1.2 million in 2016, \$1.1 million in 2015 and \$438,000 in 2014. Amortization expense for the next five years, assuming no change in the estimated useful lives of identified intangible assets, is \$1.1 million in 2017, \$918,000 in 2018, \$705,000 in 2019, \$537,000 in 2020 and \$414,000 in 2021.

NOTE 8 Long-Term Debt

Revolving Credit Facility

We have a \$100.0 million revolving credit facility (the "Credit Facility") that is used to supplement our operating cash flow and fund our working capital, capital expenditure, general corporate and growth requirements. In May 2015, we amended the Credit Facility to, among other changes, extend its maturity date from June 2, 2016 to May 13, 2020. Advances under the Credit Facility are limited to the lesser of the revolving loan commitment amount (currently \$100.0 million) or a borrowing base amount that is calculated based upon a percentage of eligible receivables and inventories. As of October 1, 2016, no borrowings were outstanding on the Credit Facility, \$83.5 million of borrowing capacity was available and outstanding letters of credit totaled \$1.8 million. As of October 3, 2015, there were no borrowings outstanding on the Credit Facility.

Interest rates on the Credit Facility are based upon (1) an index rate that is established at the highest of the prime rate, 0.50% plus the federal funds rate or the LIBOR rate plus the excess of the then-applicable margin for LIBOR loans over the then-applicable margin for index rate loans, or (2) at our election, a LIBOR rate, plus in either case, an applicable interest rate margin. The applicable interest rate margins are adjusted on a quarterly basis based upon the amount of

excess availability on the Credit Facility within the range of 0.25% to 0.75% for index rate loans and 1.25% to 1.75% for LIBOR loans. In addition, the applicable interest rate margins would be increased by 2.00% upon the occurrence of certain events of default provided for under the terms of the Credit Facility. Based on our excess availability as of October 1, 2016, the applicable interest rate margins on the Credit Facility were 0.25% for index rate loans and 1.25% for LIBOR loans.

Our ability to borrow available amounts under the Credit Facility will be restricted or eliminated in the event of certain covenant breaches, events of default or if we are unable to make certain representations and warranties provided for under the terms of the Credit Facility. We are required to maintain a fixed charge coverage ratio of not less than 1.10 at the end of each fiscal quarter for the twelve-month period then ended when the amount of liquidity on the Credit Facility is less than \$12.5 million. In addition, the terms of the Credit Facility restrict our ability to, among other things: engage in certain business combinations or divestitures; make investments in or loans to third parties, unless certain conditions are met with respect to such investments or loans; pay cash dividends or repurchase shares of our stock subject to certain minimum borrowing availability requirements; incur or assume

PART II

ITEM 8 Financial Statements and Supplementary Data

indebtedness; issue securities; enter into certain transactions with our affiliates; or permit liens to encumber our property and assets. The terms of the Credit Facility also provide that an event of default will occur upon the occurrence of, among other things: defaults or breaches under the loan documents, subject in certain cases to cure periods; defaults or breaches by us or any of our subsidiaries under any agreement resulting in the acceleration of amounts above certain thresholds or payment defaults above certain thresholds; certain events of bankruptcy or insolvency; certain entries of judgment against us or any of our subsidiaries, which are not covered by insurance; or a change of control. As of October 1, 2016, we were in compliance with all of the financial and negative covenants under the Credit Facility and there have not been any events of default.

Amortization of capitalized financing costs associated with the Credit Facility was \$65,000 in 2016, \$89,000 in 2015 and \$102,000 in 2014. Accumulated amortization of capitalized financing costs was \$4.5 million as of October 1, 2016 and October 3, 2015. We expect the amortization of capitalized financing costs to approximate the following amounts for the next five fiscal years:

Fiscal year	<i>In thousands</i>
2017	\$ 65
2018	65
2019	65
2020	41
2021	-

NOTE 9 Stock-Based Compensation

Under our equity incentive plans, employees and directors may be granted stock options, restricted stock, restricted stock units and performance awards. Effective February 17, 2015, our shareholders approved the 2015 Equity Incentive Plan of Insteel Industries, Inc. (the "2015 Plan"), which authorizes up to 900,000 shares of our common stock for future grants under the plan. The 2015 Plan, which expires

on February 17, 2025, replaces the 2005 Equity Incentive Plan of Insteel Industries, Inc., which expired on February 15, 2015. As of October 1, 2016, there were 558,000 shares of our common stock available for future grants under the 2015 Plan, which is our only active equity incentive plan.

Stock option awards

Under our equity incentive plans, employees and directors may be granted options to purchase shares of common stock at the fair market value on the date of the grant. Options granted under these plans generally vest over three years and expire ten years from the date of the grant. Compensation expense associated with stock options is as follows:

<i>(In thousands)</i>	Year Ended		
	October 1, 2016	October 3, 2015	September 27, 2014
Stock options:			
Compensation expense	\$ 988	\$ 1,007	\$ 1,139

The remaining unrecognized compensation cost related to unvested options at October 1, 2016 was \$344,000, which is expected to be recognized over a weighted average period of 1.51 years.

The fair value of each option award granted is estimated on the date of grant using a Monte Carlo valuation model. The weighted-average estimated fair values of stock options granted during 2016, 2015 and 2014 were \$9.92, \$7.10 and \$7.00 per share, respectively, based on the following weighted-average assumptions:

	Year Ended		
	October 1, 2016	October 3, 2015	September 27, 2014
Expected term (in years)	5.45	5.72	5.08
Risk-free interest rate	1.30%	2.18%	0.38%
Expected volatility	39.00%	37.99%	39.57%
Expected dividend yield	0.48%	0.61%	0.60%

The assumptions utilized in the Monte Carlo valuation model are evaluated and revised, as necessary, to reflect market conditions and actual historical experience. The expected term for options was based on the results of a Monte Carlo simulation model, using the model's estimated fair value as an input to the Black-Scholes-Merton model, and then solving for the expected term. The risk-free interest rate for

periods within the contractual life of the option was based on the U.S. Treasury yield curve in effect at the time of the grant. The expected volatility was derived using a term structure based on historical volatility and the volatility implied by exchange-traded options on our stock. The dividend yield was calculated based on our annual dividend as of the option grant date.

The following table summarizes stock option activity:

<i>(Share amounts in thousands)</i>	Options Outstanding	Exercise Price Per Share		Contractual Term - Weighted Average	Aggregate Intrinsic Value <i>(in thousands)</i>
		Range	Weighted Average		
Outstanding at September 28, 2013	918	\$5.43 - \$20.27	\$ 12.65		
Granted	136	19.08 - 20.50	19.80		
Exercised	(183)	5.43 - 20.27	10.42		\$ 1,789
Outstanding at September 27, 2014	871	6.89 - 20.50	14.23		
Granted	134	18.05 - 21.96	19.89		
Exercised	(27)	6.89 - 11.15	9.17		328
Forfeited	(55)	9.16 - 21.96	15.37		
Outstanding at October 3, 2015	923	7.55 - 21.96	15.14		
Granted	99	23.95 - 34.49	28.47		
Exercised	(651)	7.55 - 21.96	13.93		8,718
OUTSTANDING AT OCTOBER 1, 2016	371	9.16 - 34.49	20.81	7.98 years	5,722
Vested and anticipated to vest in future at October 1, 2016	365		20.78	7.96 years	5,647
Exercisable at October 1, 2016	142		16.41	6.56 years	2,826

Stock option exercises include “net exercises” for which the optionee received shares of common stock equal to the intrinsic value of the options (fair market value of common stock on the date of exercise less exercise price) reduced by any applicable withholding taxes.

Restricted stock units

Restricted stock units (“RSUs”) granted under our equity incentive plans are valued based upon the fair market value on the date of the grant and provide for a dividend equivalent payment which is included in compensation expense. The vesting period for RSUs is generally one

year from the date of grant for RSUs granted to directors and three years from the date of the grant for RSUs granted to employees. RSUs do not have voting rights. RSU grants and compensation expense are as follows:

<i>(In thousands)</i>	Year Ended		
	October 1, 2016	October 3, 2015	September 27, 2014
Restricted stock unit grants:			
Units	57	62	64
Market value	\$ 1,516	\$ 1,253	\$ 1,252
Compensation expense	1,451	1,291	1,522

The remaining unrecognized compensation cost related to unvested RSUs on October 1, 2016 was \$584,000 which is expected to be recognized over a weighted average period of 1.79 years.

The following table summarizes RSU activity:

<i>(Unit amounts in thousands)</i>	Restricted Stock Units Outstanding	Weighted Average Grant Date Fair Value
	Balance, September 28, 2013	221
Granted	64	19.61
Released	(88)	12.33
Balance, September 27, 2014	197	15.68
Granted	62	20.33
Forfeited	(13)	17.52
Released	(89)	12.86
Balance, October 3, 2015	157	18.96
Granted	57	26.57
Forfeited	(2)	23.95
Released	(67)	17.95
BALANCE, OCTOBER 1, 2016	145	22.35

NOTE 10 Income Taxes

The components of the provision for income taxes are as follows:

<i>(Dollars in thousands)</i>	Year Ended		
	October 1, 2016	October 3, 2015	September 27, 2014
Provision for income taxes:			
Current:			
Federal	\$ 17,075	\$ 10,149	\$ 8,196
State	1,434	772	330
	18,509	10,921	8,526
Deferred:			
Federal	396	222	(323)
State	140	111	364
	536	333	41
INCOME TAXES	\$ 19,045	\$ 11,254	\$ 8,567
EFFECTIVE INCOME TAX RATE	33.8%	34.1%	34.0%

The reconciliation between income taxes computed at the federal statutory rate and the provision for income taxes is as follows:

<i>(Dollars in thousands)</i>	Year Ended					
	October 1, 2016		October 3, 2015		September 27, 2014	
Provision for income taxes at federal statutory rate	\$ 19,701	35.0%	\$ 11,537	35.0%	\$ 8,823	35.0%
Qualified production activities deduction	(1,596)	(2.8)	(1,005)	(3.0)	(755)	(3.0)
Valuation allowance	(213)	(0.4)	(55)	(0.2)	(183)	(0.7)
State income taxes, net of federal tax benefit	1,093	1.9	612	1.9	577	2.3
Other, net	60	0.1	165	0.4	105	0.4
PROVISION FOR INCOME TAXES	\$ 19,045	33.8%	\$ 11,254	34.1%	\$ 8,567	34.0%

The components of deferred tax assets and liabilities are as follows:

<i>(In thousands)</i>	October 1, 2016	October 3, 2015
Deferred tax assets:		
Defined benefit plans	\$ 3,497	\$ 3,755
Accrued expenses and asset reserves	2,942	2,596
Stock-based compensation	1,652	2,054
State net operating loss carryforwards and tax credits	354	658
Goodwill, amortizable for tax purposes	277	559
Valuation allowance	(280)	(492)
DEFERRED TAX ASSETS	8,442	9,130
Deferred tax liabilities:		
Plant and equipment	(12,915)	(12,285)
Prepaid insurance and other reserves	(999)	(1,410)
DEFERRED TAX LIABILITIES	(13,914)	(13,695)
NET DEFERRED TAX LIABILITY	\$ (5,472)	\$ (4,565)

In November 2015, the FASB issued ASU No. 2015-17 "Income Taxes (Topic 740) - Balance Sheet Classification of Deferred Taxes" to simplify the presentation of deferred income taxes. Under this update, all deferred tax assets and liabilities, along with any related valuation allowance, are required to be classified as noncurrent on the balance sheet. Effective January 2, 2016, we early adopted ASU No. 2015-17 on a prospective basis, which resulted in the reclassification of our current deferred tax asset as a non-current deferred tax liability on our consolidated balance sheet. No prior periods were retrospectively adjusted.

As of October 1, 2016, we recorded a non-current deferred tax liability (net of valuation allowance) of \$5.5 million in other liabilities on our consolidated balance sheet. As of October 3, 2015, we recorded a current

deferred tax asset (net of valuation allowance) of \$1.5 million on our consolidated balance sheet in other current assets and a non-current deferred tax liability (net of valuation allowance) of \$6.1 million in other liabilities. We have \$7.5 million of state operating loss carryforwards that begin to expire in 2017, but principally expire between 2017 and 2031. We have also recorded deferred tax assets for various state tax credits of \$87,000, which will begin to expire in 2018 and principally expire between 2018 and 2020.

The realization of our deferred tax assets is entirely dependent upon our ability to generate future taxable income in applicable jurisdictions. GAAP requires that we periodically assess the need to establish a valuation allowance against our deferred tax assets to the extent we no longer

believe it is more likely than not that they will be fully utilized. As of October 1, 2016, we had recorded a valuation allowance of \$280,000 pertaining to various state NOLs and tax credits that were not expected to be utilized. The valuation allowance is subject to periodic review and adjustment based on changes in facts and circumstances and would be reduced should we utilize the state net operating loss carryforwards against which an allowance had previously been provided or determine that such utilization is more likely than not. The \$212,000 decrease in the valuation allowance during 2016 is primarily due to the utilization of state tax credits for which an allowance had been previously recorded.

As of October 1, 2016, we had no material, known tax exposures that required the establishment of contingency reserves for uncertain tax positions.

We classify interest and penalties related to unrecognized tax benefits as part of income tax expense. There were no interest and penalties related to unrecognized tax benefits incurred during 2016, 2015 and 2014.

We file U.S. federal income tax returns as well as state and local income tax returns in various jurisdictions. Federal and various state tax returns filed subsequent to 2011 remain subject to examination.

NOTE 11 Employee Benefit Plans

Retirement plans

We had one defined benefit pension plan, the Insteel Wire Products Company Retirement Income Plan for Hourly Employees, Wilmington, Delaware (the "Delaware Plan"). The Delaware Plan provided benefits for eligible employees based primarily upon years of service and compensation levels. The Delaware Plan was frozen effective September 30, 2008 whereby participants no longer earned additional benefits.

During the second quarter of 2016, we notified plan participants of our intent to terminate the Delaware Plan effective May 1, 2016. During September 2016, the Delaware Plan settled plan liabilities through either lump sum distributions to plan participants or annuity contracts purchased from a third-party insurance company that provided for the

payment of vested benefits to those participants that did not elect the lump sum option. As of October 1, 2016, there were no remaining plan assets. We made contributions totaling \$1.9 million, \$234,000 and \$240,000 to the Delaware Plan during 2016, 2015 and 2014, respectively.

As a result of the pension termination, unrecognized losses, which previously were recorded in accumulated other comprehensive loss on our consolidated balance sheets, were recognized as expense and the pension plan settlement loss of \$2.5 million was recorded on our consolidated statements of operations for the year ended October 1, 2016.

The reconciliation of the projected benefit obligation, plan assets, funded status and amounts recognized in our consolidated balance sheets for the Delaware Plan is as follows:

<i>(In thousands)</i>	Year Ended		
	October 1, 2016	October 3, 2015	September 27, 2014
Change in benefit obligation:			
Benefit obligation at beginning of year	\$ 3,463	\$ 3,078	\$ 2,973
Interest cost	147	130	137
Actuarial loss	324	514	174
Plan settlement	290	-	-
Distributions	(4,224)	(259)	(206)
BENEFIT OBLIGATION AT END OF YEAR	\$ -	\$ 3,463	\$ 3,078
Change in plan assets:			
Fair value of plan assets at beginning of year	\$ 2,201	\$ 2,253	\$ 2,045
Actual return on plan assets	104	(27)	178
Employer contributions	1,919	234	240
Plan settlement	(4,003)	-	-
Distributions	(221)	(259)	(210)
FAIR VALUE OF PLAN ASSETS AT END OF YEAR	\$ -	\$ 2,201	\$ 2,253
Reconciliation of funded status to net amount recognized:			
Funded status	\$ -	\$ (1,263)	\$ (825)
NET AMOUNT RECOGNIZED	\$ -	\$ (1,263)	\$ (825)
Amounts recognized on the consolidated balance sheet:			
Accrued benefit liability	\$ -	\$ (1,263)	\$ (825)
Accumulated other comprehensive loss (net of tax)	-	1,197	782
NET AMOUNT RECOGNIZED	\$ -	\$ (66)	\$ (43)
Amounts recognized in accumulated other comprehensive loss:			
Unrecognized net loss	\$ -	\$ 1,930	\$ 1,261
NET AMOUNT RECOGNIZED	\$ -	\$ 1,930	\$ 1,261

PART II

ITEM 8 Financial Statements and Supplementary Data

<i>(In thousands)</i>	Year Ended		
	October 1, 2016	October 3, 2015	September 27, 2014
Other changes in plan assets and benefit obligations recognized in other comprehensive income (loss):			
Net loss	\$ 685	\$ 723	\$ 165
Amortization of net loss	(76)	(53)	(43)
Settlement loss	(2,539)	-	-
TOTAL RECOGNIZED IN OTHER COMPREHENSIVE INCOME (LOSS)	\$ (1,930)	\$ 670	\$ 122

Net periodic pension cost for the Delaware Plan includes the following components:

<i>(In thousands)</i>	Year Ended		
	October 1, 2016	October 3, 2015	September 27, 2014
Interest cost	\$ 147	\$ 130	\$ 137
Expected return on plan assets	(175)	(181)	(165)
Settlement loss recognized	2,539	-	-
Amortization of net loss	76	53	43
NET PERIODIC PENSION COST	\$ 2,587	\$ 2	\$ 15

The assumptions used in the valuation of the Delaware Plan are as follows:

	Measurement Date		
	October 1, 2016	October 3, 2015	September 27, 2014
Assumptions at year-end:			
Discount rate	3.75%	4.25%	4.25%
Expected long-term rate of return on assets	N/A	8.00%	8.00%

The assumed discount rate is established as of our fiscal year-end measurement date. In establishing the discount rate, we reviewed published market indices of high-quality debt securities, adjusted as appropriate for duration, and high-quality bond yield curves applicable to the expected benefit payments of the Delaware Plan. To develop the expected long-term rate of return on assets assumption, we considered the historical returns and future expectations of returns for each asset class, as well as the target asset allocation of the Delaware Plan portfolio.

Prior to the termination and settlement of the Delaware Plan the fundamental goal underlying the investment policy was to ensure that its assets were invested in a prudent manner to meet its obligations as such obligations became due. The primary investment objectives

included providing a total return that would promote the goal of benefit security by attaining an appropriate ratio of plan assets to plan obligations, diversifying investments across and within asset classes, minimizing the impact of losses in single investments and adhering to investment practices that complied with applicable laws and regulations. The investment strategy for equities emphasized U.S. large cap equities with the portfolio's performance measured against the S&P 500 index or other applicable indices. The investment strategy for fixed income investments was focused on maintaining an overall portfolio with a minimum credit rating of A-1 as well as a minimum rating of any security at the time of purchase of Baa/BBB by Moody's or Standard & Poor's, if rated.

The Delaware Plan had a long-term target asset mix of 60% equities and 40% fixed income. The asset allocations for the Delaware Plan in 2015 and 2014 were as follows:

	Percentage of Plan Assets at Measurement Date	
	October 3, 2015	September 27, 2014
Large-cap equities	37.6%	36.6%
Mid-cap equities	7.7%	7.4%
Small-cap equities	8.2%	8.3%
International equities	8.8%	8.8%
Fixed income securities	37.3%	38.0%
Cash and cash equivalents	0.4%	0.9%

As of October 3, 2015, the Delaware Plan's assets included equity securities, fixed income securities and cash and cash equivalents, and were required to be measured at fair value. We used a three-tier hierarchy, which prioritizes the inputs used in measuring fair value, defined as follows: Level 1 - observable inputs such as quoted prices in active markets for identical assets and liabilities; Level 2 - inputs

other than quoted prices in active markets that are either directly or indirectly observable; and Level 3 - unobservable inputs in which little or no market data exists, thereby requiring the development of valuation assumptions. The fair values of the Delaware Plan's assets as of October 3, 2015 were as follows:

<i>(In thousands)</i>		Total	Quoted Prices in Active Markets (Level 1)	Observable Inputs (Level 2)	Unobservable Inputs (Level 3)
Large-cap equities	\$	828	\$ 828	\$ -	\$ -
Mid-cap equities		169	169	-	-
Small-cap equities		181	181	-	-
International equities		195	195	-	-
Fixed income securities		820	820	-	-
Cash and cash equivalents		8	-	8	-
TOTAL	\$	2,201	\$ 2,193	\$ 8	\$ -

Equity securities are primarily direct investments in the stock of publicly-traded companies that are valued based on the closing price reported in an active market on which the individual securities are traded. Fixed income securities are government and corporate debt securities that

are valued based on the closing price reported in an active market on which the individual securities are traded. Cash and cash equivalents are money market funds that are valued based on the net asset value as determined by the fund each business day.

Supplemental employee retirement plan

We have Retirement Security Agreements (each, a “SERP”) with certain of our employees (each, a “Participant”). Under the SERPs, if the Participant remains in continuous service with us for a period of at least 30 years, we will pay them a supplemental retirement benefit for the 15-year period following their retirement equal to 50% of their highest average annual base salary for five consecutive years in the 10-year period preceding their retirement. If the Participant retires

prior to the later of age 65 or the completion of 30 years of continuous service with us, but has completed at least 10 years of continuous service, the amount of their supplemental retirement benefit will be reduced by 1/360th for each month short of 30 years that they were employed by us. In 2005, we revised the SERPs to add Participants and increase benefits to existing Participants.

The reconciliation of the projected benefit obligation, plan assets, funded status and amounts recognized for the SERPs in our consolidated balance sheets is as follows:

<i>(In thousands)</i>	Year Ended		
	October 1, 2016	October 3, 2015	September 27, 2014
Change in benefit obligation:			
Benefit obligation at beginning of year	\$ 7,821	\$ 7,480	\$ 6,938
Service cost	263	287	219
Interest cost	326	323	315
Actuarial loss	1,039	21	298
Distributions	(290)	(290)	(290)
BENEFIT OBLIGATION AT END OF YEAR	\$ 9,159	\$ 7,821	\$ 7,480
Change in plan assets:			
Actual employer contributions	\$ 290	\$ 290	\$ 290
Actual distributions	(290)	(290)	(290)
PLAN ASSETS AT FAIR VALUE AT END OF YEAR	\$ -	\$ -	\$ -
Reconciliation of funded status to net amount recognized:			
Funded status	\$ (9,159)	\$ (7,821)	\$ (7,480)
NET AMOUNT RECOGNIZED	\$ (9,159)	\$ (7,821)	\$ (7,480)
Amounts recognized in accumulated other comprehensive loss:			
Unrecognized net loss	\$ 2,485	\$ 1,531	\$ 1,627
NET AMOUNT RECOGNIZED	\$ 2,485	\$ 1,531	\$ 1,627
Other changes in plan assets and benefit obligations recognized in other comprehensive income (loss):			
Net loss	\$ 1,039	\$ 21	\$ 298
Amortization of net loss	(85)	(117)	(52)
TOTAL RECOGNIZED IN OTHER COMPREHENSIVE INCOME (LOSS)	\$ 954	\$ (96)	\$ 246

PART II

ITEM 8 Financial Statements and Supplementary Data

Net periodic pension cost for the SERPs includes the following components:

<i>(In thousands)</i>	Year Ended		
	October 1, 2016	October 3, 2015	September 27, 2014
Service cost	\$ 263	\$ 287	\$ 219
Interest cost	326	323	315
Amortization of net loss	85	117	52
NET PERIODIC PENSION COST	\$ 674	\$ 727	\$ 586

The estimated net loss that will be amortized from accumulated other comprehensive loss into net periodic pension cost during 2017 is \$174,000.

The assumptions used in the valuation of the SERPs are as follows:

	Measurement Date		
	October 1, 2016	October 3, 2015	September 27, 2014
Assumptions at year-end:			
Discount rate	3.75%	4.25%	4.25%
Rate of increase in compensation levels	3.00%	3.00%	3.00%

The assumed discount rate is established as of our fiscal year-end measurement date. In establishing the discount rate, we review published market indices of high-quality debt securities, adjusted as appropriate for duration, and high-quality bond yield curves applicable to the expected benefit payments of the plan. The SERPs expected rate of increase in compensation levels is based on the anticipated increases in annual compensation.

The projected benefit payments under the SERPs are as follows:

Fiscal year(s)	<i>In thousands</i>
2017	\$ 290
2018	359
2019	321
2020	241
2021	241
2022- 2026	3,403

As noted above, the SERPs were revised in 2005 to add Participants and increase benefits to certain existing Participants. However, for certain Participants we still maintain the benefits of the respective SERPs that were in effect prior to the 2005 changes, which entitle them to fixed cash benefits upon retirement at age 65, payable annually for

15 years. These SERPs are supported by life insurance policies on the Participants that are purchased and owned by us. The cash benefits paid under these SERPs were \$25,000 in 2016, 2015 and 2014. The expense attributable to these SERPs was \$26,000 in 2016, \$23,000 in 2015 and \$16,000 in 2014.

Retirement savings plan

In 1996, we adopted the Retirement Savings Plan of Insteel Industries, Inc. (the "Plan") to provide retirement benefits and stock ownership for our employees. The Plan is an amendment and restatement of our Employee Stock Ownership Plan. As allowed under Sections 401(a) and 401(k) of the Internal Revenue Code, the Plan provides for tax-deferred salary deductions for eligible employees.

The Plan allows for discretionary contributions to be made by us as determined by the Board of Directors, which are allocated among

eligible participants based on their compensation relative to the total compensation of all participants. Employees are permitted to contribute up to 75% of their annual compensation to the Plan, limited to a maximum annual amount as set periodically by the Internal Revenue Code. During 2014 to 2016, we matched employee contributions up to 100% of the first 1% and 50% of the next 5% of eligible compensation that was contributed by employees. Our contributions to the Plan were \$1.0 million in 2016 and 2015 and \$0.9 million in 2014.

Voluntary Employee Beneficiary Associations ("VEBA")

We have a VEBA which allows both us and our employees to make contributions to pay for medical costs. Our contributions to the VEBA were \$5.4 million in 2016, \$6.3 million in 2015 and \$4.6 million in 2014. We are primarily self-insured for our employee's healthcare costs, carrying stop-loss insurance coverage for individual claims in excess of

\$175,000 per benefit plan year. Our self-insurance liabilities are based on the total estimated costs of claims filed and claims incurred but not reported, less amounts paid against such claims. We review current and historical claims data in developing our estimates.

NOTE 12 Commitments and Contingencies

Insurance recoveries

On January 21, 2014, a fire occurred at our Gallatin, Tennessee PC strand manufacturing facility, damaging a portion of the facility and requiring the temporary curtailment of operations until the necessary repairs were completed. In response, we reassigned a portion of our strand production requirements to our facility located in Sanderson, Florida, which was operating at a reduced utilization level. During the first quarter of 2015, we completed the remainder of the repairs and the Gallatin facility was fully operational.

We maintained general liability, business interruption and replacement cost property insurance coverage on our facilities that was sufficient to cover the losses incurred from the fire. We received \$2.0 million and \$6.7 million of insurance proceeds in 2015 and 2014, respectively, related to the expenses that were incurred and capital outlays that were required to replace property and equipment damaged in the fire. During 2015, the insurance proceeds attributable to the additional expenses incurred were recorded in cost of sales (\$244,000) and SG&A expense (\$69,000) on our consolidated statement of operations. During 2014, the insurance proceeds attributable to the additional expenses were recorded in cost of sales (\$3.9 million) and SG&A expense (\$147,000) on our consolidated statement of operations. The insurance proceeds attributable to the property and equipment damaged in the fire were reported in cash flows from investing activities and all other insurance proceeds received were reported in cash flows from operating activities on our consolidated statement of cash flows. We reached a final settlement on this claim with our insurance carrier during the third quarter of 2015.

Leases and purchase commitments

We lease a portion of our equipment and our facility in Houston, Texas under operating leases that expire at various dates through 2020. Under most lease agreements, we pay insurance, taxes and maintenance. Rental expense for operating leases was \$1.8 million in 2016 and in 2015 and \$1.2 million in 2014. As of October 1, 2016, minimum rental commitments under all non-cancelable leases with an initial term in excess of one year are payable as follows: 2017, \$1.4 million; 2018, \$742,000; 2019, \$260,000; 2020 \$50,000 and 2021 and beyond, \$0.

As of October 1, 2016, we had \$26.8 million in non-cancelable purchase commitments for raw material extending as long as approximately 100 days and \$11.6 million of contractual commitments for the purchase of certain equipment that had not been fulfilled and are not reflected in the consolidated financial statements.

Customer dispute

During 2015, we settled a dispute with a customer resulting in a \$0.7 million charge that was recorded in other expense on our consolidated statement of operations.

Legal proceedings

We are involved in lawsuits, claims, investigations and proceedings, including commercial, environmental and employment matters, which arise in the ordinary course of business. We do not expect the ultimate cost to resolve these matters will have a material adverse effect on our financial position, results of operations or cash flows.

Severance and change of control agreements

We have entered into severance agreements with our Chief Executive Officer and Chief Financial Officer that provide them with certain termination benefits in the event their employment with us is terminated without cause. The initial term of each agreement is two years and they automatically renew for successive one year terms unless we or the executive provide notice of termination as specified in the agreement. In the event of termination of the executive's employment without cause, these agreements provide that they would receive termination benefits equal to one and one-half times their annual base salary in effect on the termination date and the continuation of health and welfare benefits for eighteen months. In addition, all of the executive's stock options and restricted stock would vest immediately, and outplacement services would be provided.

We have also entered into change in control agreements with key members of management, including our executive officers, which specify the terms of separation in the event that termination of their employment followed a change in control. The initial term of each agreement is two years and they automatically renew for successive one year terms unless we or the executive provide notice of termination as specified in the agreement. The agreements do not provide assurances of continued employment or specify the terms of an executive's termination should one occur in the absence of a change in control. The compensation payable under the terms of these agreements differs between the Chief Executive Officer and Chief Financial Officer, and the other covered executives. In the event of termination of the Chief Executive Officer or the Chief Financial Officer within two years of a change of control, they would receive severance benefits equal to two times base compensation, two times the average bonus for the prior three years and the continuation of health and welfare benefits for two years. In the event of such a termination of the other key members of management, including our other two executive officers, within two years of a change of control, they would receive severance benefits equal to one times base compensation, one times the average bonus for the prior three years and the continuation of health and welfare benefits for one year. In addition, for any covered executive that is terminated within two years of a change of control, all of their stock options and restricted stock would vest immediately, and outplacement services would be provided.

PART II**ITEM 8 Financial Statements and Supplementary Data****NOTE 13 Earnings Per Share**

The computation of basic and diluted earnings per share attributable to common shareholders is as follows:

<i>(In thousands, except per share amounts)</i>	Year Ended		
	October 1, 2016	October 3, 2015	September 27, 2014
Net earnings	\$ 37,245	\$ 21,710	\$ 16,641
Basic weighted average shares outstanding	18,754	18,418	18,257
Dilutive effect of stock-based compensation	301	385	408
Diluted weighted average shares outstanding	19,055	18,803	18,665
Net earnings per share:			
Basic	\$ 1.99	\$ 1.18	\$ 0.91
Diluted	1.95	1.15	0.89

Options representing 51,000 shares in 2016, 144,000 shares in 2015 and 120,000 shares in 2014 were antidilutive and were not included in the diluted EPS computation.

NOTE 14 Business Segment Information

Our operations are entirely focused on the manufacture and marketing of steel wire reinforcing products for concrete construction applications. Our concrete reinforcing products consist of two product lines: PC strand and WWR. Based on the criteria specified in ASC Topic 280, Segment Reporting, we have one reportable segment.

Our net sales and long-lived assets (consisting of net property, plant and equipment, the cash surrender value of life insurance policies, goodwill and intangible assets) by geographic region are as follows:

<i>(In thousands)</i>	Year Ended		
	October 1, 2016	October 3, 2015	September 27, 2014
Net sales:			
United States	\$ 416,391	\$ 444,475	\$ 402,675
Foreign	2,156	3,029	6,303
TOTAL	\$ 418,547	\$ 447,504	\$ 408,978
Long-lived assets:			
United States	\$ 112,130	\$ 108,557	\$ 114,034
Foreign	-	-	-
TOTAL	\$ 112,130	\$ 108,557	\$ 114,034

Our net sales by product line are as follows:

<i>(In thousands)</i>	Year Ended		
	October 1, 2016	October 3, 2015	September 27, 2014
Net sales:			
Welded wire reinforcement	\$ 256,801	\$ 255,219	\$ 255,294
Prestressed concrete strand	161,746	192,285	153,684
TOTAL	\$ 418,547	\$ 447,504	\$ 408,978

There were no customers that accounted for 10% or more of our net sales in 2016, 2015 and 2014.

NOTE 15 Related Party Transactions

Sales to a company affiliated with one of our directors amounted to \$420,000 in 2016, \$361,000 in 2015 and \$459,000 in 2014.

NOTE 16 Other Financial Data

Balance sheet information:

<i>(In thousands)</i>	October 1, 2016	October 3, 2015
Accounts receivable, net:		
Accounts receivable	\$ 47,680	\$ 47,420
Less allowance for doubtful accounts	(291)	(638)
TOTAL	\$ 47,389	\$ 46,782
Inventories:		
Raw materials	\$ 45,032	\$ 38,457
Work in process	2,788	2,968
Finished goods	23,366	24,584
TOTAL	\$ 71,186	\$ 66,009
Other current assets:		
Prepaid insurance	\$ 1,805	\$ 2,519
Current deferred tax asset	-	1,492
Other	1,234	1,298
TOTAL	\$ 3,039	\$ 5,309
Other assets:		
Cash surrender value of life insurance policies	\$ 7,909	\$ 7,194
Capitalized financing costs, net	170	227
Other	105	97
TOTAL	\$ 8,184	\$ 7,518
Property, plant and equipment, net:		
Land and land improvements	\$ 9,619	\$ 9,279
Buildings	43,739	43,016
Machinery and equipment	143,789	142,662
Construction in progress	11,318	1,715
	208,465	196,672
Less accumulated depreciation	(120,272)	(112,494)
TOTAL	\$ 88,193	\$ 84,178
Accrued expenses:		
Salaries, wages and related expenses	\$ 6,619	\$ 5,455
Property taxes	1,328	1,507
Customer rebates	1,296	1,760
Sales allowance reserves	577	-
Restructuring liabilities	239	505
Workers' compensation	127	294
Pension plan	-	1,263
Income taxes	-	2,187
Deferred revenues	-	105
Other	838	568
TOTAL	\$ 11,024	\$ 13,644
Other liabilities:		
Deferred compensation	\$ 9,071	\$ 7,765
Deferred income taxes	5,472	6,057
Other	-	376
TOTAL	\$ 14,543	\$ 14,198

NOTE 17 Rights Agreement

On April 26, 1999, our Board of Directors declared a dividend distribution of one right per share of our outstanding common stock as of May 17, 1999 pursuant to a Rights Agreement, dated as of April 27, 1999. The Rights Agreement also provides that one right will attach to each share of our common stock issued after May 17, 1999. On April 21, 2009, effective April 25, 2009, our Board of Directors amended the Rights Agreement to, among other changes, extend the final expiration date and adjust the purchase price payable upon exercise of a right.

The rights are not currently exercisable but trade with our common stock shares and become exercisable on the distribution date. The distribution date will occur upon the earliest of 10 business days following a public announcement that either a person or group of affiliated or associated persons (an “acquiring person”) has acquired, or obtained the right to acquire, beneficial ownership of 20% or more (after adjustment for certain derivative transactions) of the outstanding shares of common stock (the “stock acquisition date”), or of a tender offer or exchange offer that would, if consummated, result in an acquiring person beneficially owning 20% or more of such outstanding shares of common stock, subject to certain limitations.

Each right will entitle the holder, other than the acquiring person or group, to purchase one two-hundredths of a share (a “Unit”) of our Series A Junior Participating Preferred Stock (“Preferred Stock”) at a purchase price of \$46 per Unit, subject to adjustment as described in the Rights Agreement (the “purchase price”). At the time specified, each holder of a right will have the right to receive in lieu of Preferred Stock, upon exercise and payment of the purchase price, common

stock (or, in certain circumstances, cash, property or other securities of the Company) having a value equal to two times the purchase price or, at the discretion of the Board, upon exercise and without payment of the purchase price, common stock (or, in certain circumstances, cash, property or other securities of the Company) having a value equal to the difference between the purchase price and the value of the consideration which a person exercising the right and paying the purchase price would receive. Rights that are or (under specified circumstances) were, beneficially owned by any acquiring person will be null and void. The purchase price payable and the number of Units of Preferred Stock or other securities or property issuable upon exercise of the rights are subject to adjustment from time to time. At any time after any person becomes an acquiring person, we may exchange all or part of the rights for shares of common stock at an exchange ratio of one share per right, as appropriately adjusted to reflect any stock dividend, stock split or similar transaction.

In addition, each rights holder, other than an acquiring person, upon exercise of rights will have the right to receive shares of the common stock of the acquiring corporation having a value equal to two times the purchase price for such holder’s rights if we engage in a merger or other business combination where we are not the surviving entity or where we are the surviving entity and all or part of our common stock is exchanged for the stock or other securities of the other company, or if 50% or more of our assets or earning power is sold or transferred.

The rights will expire on April 24, 2019, and may be redeemed by us at any time prior to the distribution date at a price of \$0.005 per right.

NOTE 18 Product Warranties

Our products are used in applications which are subject to inherent risks including performance deficiencies, personal injury, property damage, environmental contamination or loss of production. We warrant our products to meet certain specifications, and actual or

claimed deficiencies from these specifications may give rise to claims. We do not maintain a reserve for warranties as the historical claims have been immaterial. We maintain product liability insurance coverage to minimize our exposure to such risks.

NOTE 19 Share Repurchases

On November 18, 2008, our Board of Directors approved a share repurchase authorization to buy back up to \$25.0 million of our outstanding common stock (the “Authorization”). Repurchases may be made from time to time in the open market or in privately negotiated transactions subject to market conditions, applicable legal requirements and other factors. We are not obligated to acquire any particular amount

of common stock and may commence or suspend the program at any time at our discretion without prior notice. The Authorization continues in effect until terminated by the Board of Directors. As of October 1, 2016, there was \$24.8 million remaining available for future share repurchases under the Authorization. There were no share repurchases during 2016, 2015 and 2014.

Report of Independent Registered Public Accounting Firm Consolidated Financial Statements

To the Board of Directors and Shareholders

Insteel Industries, Inc.:

We have audited the accompanying consolidated balance sheets of Insteel Industries, Inc. (a North Carolina corporation) and subsidiaries (the “Company”) as of October 1, 2016 and October 3, 2015, and the related consolidated statements of operations, comprehensive income, changes in shareholders’ equity, and cash flows for each of the three years in the period ended October 1, 2016. Our audits of the basic consolidated financial statements included the financial statement schedule listed in the index appearing under Schedule II, as listed in the index at Item 15(a)(2). These financial statements and financial statement schedule are the responsibility of the Company’s management. Our responsibility is to express an opinion on these financial statements and financial statement schedule based on our audits.

We conducted our audits in accordance with the standards of the Public Company Accounting Oversight Board (United States). Those standards require that we plan and perform the audit to obtain reasonable assurance about whether the financial statements are free of material misstatement. An audit includes examining, on a test basis, evidence supporting the amounts and disclosures in the financial statements. An audit also includes assessing the accounting principles used and significant estimates made by management, as well as evaluating the overall financial statement presentation. We believe that our audits provide a reasonable basis for our opinion.

In our opinion, the consolidated financial statements referred to above present fairly, in all material respects, the financial position of Insteel Industries, Inc. and subsidiaries as of October 1, 2016 and October 3, 2015, and the results of their operations and their cash flows for each of the three years in the period ended October 1, 2016 in conformity with accounting principles generally accepted in the United States of America. Also in our opinion, the related financial statement schedule, when considered in relation to the basic consolidated financial statements taken as a whole, presents fairly, in all material respects, the information set forth therein.

We also have audited, in accordance with the standards of the Public Company Accounting Oversight Board (United States), the Company’s internal control over financial reporting as of October 1, 2016, based on criteria established in the 2013 *Internal Control—Integrated Framework* issued by the Committee of Sponsoring Organizations of the Treadway Commission (COSO), and our report dated October 28, 2016 expressed an unqualified opinion.

/s/ Grant Thornton LLP
Charlotte, North Carolina
October 28, 2016

Schedule II - Valuation and Qualifying Accounts Years Ended October 1, 2016, October 3, 2015 And September 27, 2014

ALLOWANCE FOR DOUBTFUL ACCOUNTS

<i>(In thousands)</i>	Year Ended		
	October 1, 2016	October 3, 2015	September 27, 2014
Balance, beginning of year	\$ 638	\$ 888	\$ 896
Amounts charged to earnings	(244)	5	79
Write-offs, net of recoveries	(103)	(255)	(87)
BALANCE, END OF YEAR	\$ 291	\$ 638	\$ 888

ITEM 9 Changes in and Disagreements with Accountants on Accounting and Financial Disclosure

None.

ITEM 9A Controls and Procedures

Evaluation of Disclosure Controls and Procedures

We have conducted an evaluation of the effectiveness of our disclosure controls and procedures as of October 1, 2016. This evaluation was conducted under the supervision and with the participation of management, including our principal executive officer and our principal financial officer. Based upon that evaluation, our principal executive officer and our principal financial officer concluded that our disclosure controls and procedures were effective to ensure that information required to be disclosed in the reports that we file or submit

under the Securities Exchange Act of 1934, as amended (the "Exchange Act"), is recorded, processed, summarized and reported within the time periods specified in the Commission's rules and forms. Furthermore, we concluded that our disclosure controls and procedures were effective to ensure that such information is accumulated and communicated to management, including our principal executive officer and our principal financial officer, as appropriate to allow timely decisions regarding required disclosure.

Management's Report on Internal Control over Financial Reporting

Our management is responsible for establishing and maintaining adequate internal control over financial reporting. Internal control over financial reporting is a process to provide reasonable assurance regarding the reliability of our financial reporting and the preparation of our financial statements for external purposes in accordance with generally accepted accounting principles ("GAAP"). Internal control over financial reporting includes: (1) maintaining records that in reasonable detail accurately and fairly reflect the transactions and dispositions of assets; (2) providing reasonable assurance that transactions are recorded as necessary to permit preparation of financial statements in accordance with GAAP, and that receipts and expenditures are made only in accordance with authorizations of management and directors; and (3) providing reasonable assurance that unauthorized acquisition, use or disposition of assets that could have a material effect on financial statements would be prevented or detected on a timely basis. Because of its inherent limitations, internal control over financial reporting can only provide reasonable assurance that a misstatement of financial statements would be prevented or detected. Also, projections of any evaluation of

effectiveness to future periods are subject to the risk that controls may become inadequate because of changes in conditions, or that the degree of compliance with the policies or procedures may deteriorate.

Our management assessed the effectiveness of our internal control over financial reporting based on the criteria set forth by the Committee of Sponsoring Organizations of the Treadway Commission in Internal Control – Integrated Framework. Based on this assessment, our management concluded that our internal control over financial reporting was effective as of October 1, 2016. During the quarter ended October 1, 2016, there were no changes in our internal control over financial reporting that have materially affected, or are reasonably likely to materially affect, our internal control over financial reporting.

Our independent registered public accounting firm has issued an audit report on the effectiveness of our internal control over financial reporting as of October 1, 2016, which appears below.

Report of Independent Registered Public Accounting Firm Internal Control Over Financial Reporting

To the Board of Directors and Shareholders

Insteel Industries, Inc.:

We have audited the internal control over financial reporting of Insteel Industries, Inc. (a North Carolina corporation) and subsidiaries (the “Company”) as of October 1, 2016, based on criteria established in the 2013 *Internal Control—Integrated Framework* issued by the Committee of Sponsoring Organizations of the Treadway Commission (COSO). The Company’s management is responsible for maintaining effective internal control over financial reporting and for its assessment of the effectiveness of internal control over financial reporting, included in the accompanying *Management’s Report on Internal Control over Financial Reporting*. Our responsibility is to express an opinion on the Company’s internal control over financial reporting based on our audit.

We conducted our audit in accordance with the standards of the Public Company Accounting Oversight Board (United States). Those standards require that we plan and perform the audit to obtain reasonable assurance about whether effective internal control over financial reporting was maintained in all material respects. Our audit included obtaining an understanding of internal control over financial reporting, assessing the risk that a material weakness exists, testing and evaluating the design and operating effectiveness of internal control based on the assessed risk, and performing such other procedures as we considered necessary in the circumstances. We believe that our audit provides a reasonable basis for our opinion.

A company’s internal control over financial reporting is a process designed to provide reasonable assurance regarding the reliability of financial reporting and the preparation of financial statements for external purposes in accordance with generally accepted accounting principles. A company’s internal control over financial reporting includes those policies and procedures that (1) pertain to the maintenance of records that, in reasonable detail, accurately and fairly reflect the

transactions and dispositions of the assets of the company; (2) provide reasonable assurance that transactions are recorded as necessary to permit preparation of financial statements in accordance with generally accepted accounting principles, and that receipts and expenditures of the company are being made only in accordance with authorizations of management and directors of the company; and (3) provide reasonable assurance regarding prevention or timely detection of unauthorized acquisition, use, or disposition of the company’s assets that could have a material effect on the financial statements.

Because of its inherent limitations, internal control over financial reporting may not prevent or detect misstatements. Also, projections of any evaluation of effectiveness to future periods are subject to the risk that controls may become inadequate because of changes in conditions, or that the degree of compliance with the policies or procedures may deteriorate.

In our opinion, the Company maintained, in all material respects, effective internal control over financial reporting as of October 1, 2016, based on criteria established in the 2013 *Internal Control—Integrated Framework* issued by COSO.

We also have audited, in accordance with the standards of the Public Company Accounting Oversight Board (United States), the consolidated financial statements of the Company as of and for the year ended October 1, 2016, and our report dated October 28, 2016 expressed an unqualified opinion on those financial statements.

/s/ Grant Thornton LLP
Charlotte, North Carolina
October 28, 2016

ITEM 9B Other Information

None.

PART III

ITEM 10 Directors, Executive Officers and Corporate Governance

The information called for by this item and not presented herein appears under the captions “Item Number One: Election of Directors”, “Security Ownership – Section 16(a) Beneficial Reporting Compliance” and “Corporate Governance Guidelines and Board Matters” in our Proxy Statement for the 2017 Annual Meeting of Shareholders and is incorporated herein by reference. Information on executive officers appears under the caption “Executive Officers of the Company” in Part I of this report.

We have adopted a Code of Business Conduct that applies to all directors, officers and employees which is available on our web site at <http://investor.insteel.com/documents.com>. To the extent permissible under applicable law (the rules of the SEC or NASDAQ listing standards), we intend to satisfy the disclosure requirement under Item 5.05 of Form 8-K by posting on our web site any amendment or waiver to a provision of our Code of Business Conduct that requires disclosure under applicable law (the rules of the SEC or NASDAQ listing standards). Our web site does not constitute part of this Annual Report on Form 10-K.

ITEM 11 Executive Compensation

The information called for by this item appears under the captions “Executive Compensation”, “Compensation Committee Interlocks and Insider Participation” and “Director Compensation” in our Proxy Statement for the 2017 Annual Meeting of Shareholders and is incorporated herein by reference.

ITEM 12 Security Ownership of Certain Beneficial Owners and Management and Related Stockholder Matters

The information called for by this item appears under the captions “Voting Securities” and “Security Ownership” in our Proxy Statement for the 2017 Annual Meeting of Shareholders and is incorporated herein by reference.

ITEM 13 Certain Relationships and Related Transactions, and Director Independence

The information called for by this item appears under the captions “Certain Relationships and Related Person Transactions” and “Corporate Governance Guidelines and Board Matters” in our Proxy Statement for the 2017 Annual Meeting of Shareholders and is incorporated herein by reference.

ITEM 14 Principal Accounting Fees and Services

The information called for by this item appears under the caption “Item Number Four: Ratification of the Appointment of Grant Thornton LLP” in our Proxy Statement for the 2017 Annual Meeting of Shareholders and is incorporated herein by reference.

PART IV

ITEM 15 Exhibits, Financial Statement Schedules

(a)(1) Financial Statements

The financial statements as set forth under Item 8 are filed as part of this report.

(a)(2) Financial Statement Schedules

Supplemental Schedule II - Valuation and Qualifying Accounts appears on page 46 of this report.

All other schedules have been omitted because they are either not required or not applicable.

(a)(3) Exhibits

The list of exhibits filed as part of this annual report is set forth on the Exhibit Index immediately preceding such exhibits and is incorporated herein by reference.

(b) Exhibits

See Exhibit Index on pages 52 and 53.

(c) Financial Statement Schedules

See Item 15(a)(2) above.

Signatures

Pursuant to the requirements of Section 13 or 15(d) of the Securities Exchange Act of 1934, the registrant has duly caused this report to be signed on its behalf by the undersigned thereunto duly authorized.

INSTEEL INDUSTRIES, INC.

Registrant

By: /s/ MICHAEL C. GAZMARIAN

Michael C. Gazmarian

Vice President, Chief Financial Officer and Treasurer

Date: October 28, 2016

Pursuant to the requirements of the Securities Exchange Act of 1934, this report has been signed on October 28, 2016 below by the following persons on behalf of the registrant and in the capacities indicated:

Name and Signature	Position(s)
/s/ H. O. WOLTZ III	
H. O. Woltz III	<i>President, Chief Executive Officer and Chairman of the Board (Principal Executive Officer)</i>
/s/ MICHAEL C. GAZMARIAN	
Michael C. Gazmarian	<i>Vice President, Chief Financial Officer and Treasurer (Principal Financial Officer)</i>
/s/ SCOT R. JAFROODI	
Scot R. Jafroodi	<i>Chief Accounting Officer and Corporate Controller (Principal Accounting Officer)</i>
/s/ CHARLES B. NEWSOME	
Charles B. Newsome	<i>Director</i>
/s/ GARY L. PECHOTA	
Gary L. Pechota	<i>Director</i>
/s/ W. ALLEN ROGERS II	
W. Allen Rogers II	<i>Director</i>
/s/ JON M. RUTH	
Jon M. Ruth	<i>Director</i>
/s/ JOSEPH A. RUTKOWSKI	
Joseph A. Rutkowski	<i>Director</i>

Exhibit Index to Annual Report on Form 10-K of Insteel Industries, Inc. for Year Ended October 1, 2016

Exhibit Number	Description
2.1	Asset Purchase Agreement between Insteel Wire Products Company and American Spring Wire Corporation dated as of August 9, 2014 (incorporated by reference to Exhibit 2.1 of the Company's Current Report on Form 8-K filed on August 11, 2014).
3.1	Restated Articles of Incorporation for the Company (incorporated by reference to Exhibit 3.1 of the Company's Registration Statement on Form S-1 filed on May 2, 1985).
3.2	Articles of Amendment to the Restated Articles of Incorporation of the Company (incorporated by reference to Exhibit 3.1 of the Company's Current Report on Form 8-K dated May 3, 1988).
3.3	Articles of Amendment to the Restated Articles of Incorporation of the Company (incorporated by reference to Exhibit 3.1 of the Company's Quarterly Report on Form 10-Q for the quarter ended April 3, 1999 filed on May 14, 1999).
3.4	Articles of Amendment to the Restated Articles of Incorporation of the Company (incorporated by reference to Exhibit 3.1 of the Company's Quarterly Report on Form 10-Q for the quarter ended April 3, 2010 filed on April 26, 2010).
3.5	Bylaws of the Company (as last amended February 8, 2011) (incorporated by reference to Exhibit 3.2 of the Company's Current Report on Form 8-K filed on February 9, 2011).
4.1	Rights Agreement dated April 27, 1999 by and between the Company and First Union National Bank, as Rights Agent (incorporated by reference to Exhibit 99.1 of the Company's Registration Statement on Form 8-A filed on May 7, 1999).
4.2	Amendment No. 1 to the Rights Agreement dated as of April 25, 2009, between the Company and American Stock Transfer & Trust Company, LLC (as Successor Rights Agent to First Union National Bank) (incorporated by reference to Exhibit 4.2 of the Company's Current Report on Form 8-K filed on April 27, 2009).
10.1	Second Amended and Restated Credit Agreement dated as of June 2, 2010, among Insteel Wire Products Company, as Borrower; Insteel Industries, Inc., as a Credit Party; Intercontinental Metals Corporation, as a Credit Party; and General Electric Capital Corporation, as Agent and Lender (incorporated by reference to Exhibit 10.4 of the Company's Quarterly Report on Form 10-Q filed on April 26, 2011).
10.2	First Amendment to Second Amended and Restated Credit Agreement dated as of February 6, 2012, among Insteel Wire Products Company, as Borrower; Insteel Industries, Inc. as a Credit Party; Intercontinental Metals Corporation, as a Credit Party; and General Electric Capital Corporation, as Agent and Lender (incorporated by reference to Exhibit 10.1 to the Company's Current Report on Form 8-K filed on February 6, 2012).
10.3	Second Amendment to Second Amended and Restated Credit Agreement dated as of May 13, 2015, among Insteel Wire Products Company, as Borrower; Insteel Industries, Inc., as a Credit Party; Intercontinental Metals Corporation, as a Credit Party; and General Electric Capital Corporation, as Agent and Lender (incorporated by reference to Exhibit 10.3 to the Company's Current Report on Form 8-K filed on May 14, 2015).
10.4*	Form of Amended and Restated Change in Control Severance Agreements between the Company and each of H.O. Woltz III and Michael C. Gazmarian, respectively, each dated November 14, 2006; each agreement is substantially identical to the form in all material respects (incorporated by reference to Exhibit 99.1 of the Company's Current Report on Form 8-K filed on November 16, 2006).
10.5*	Form of Amended and Restated Severance Agreements with H.O. Woltz III and Michael C. Gazmarian dated November 14, 2006 (each agreement is substantially identical to the form in all material respects) (incorporated by reference to Exhibit 99.6 of the Company's Current Report on Form 8-K filed on November 16, 2006).
10.6*	Change in Control Severance Agreement between the Company and James F. Petelle dated November 14, 2006 (incorporated by reference to Exhibit 99.3 of the Company's Current Report on Form 8-K filed on November 16, 2006).
10.7*	Amended and Restated Retirement Security Agreement by and between the Company and H.O. Woltz III dated September 19, 2007 (incorporated by reference to Exhibit 10.2 of the Company's Current Report on Form 8-K filed on September 21, 2007).
10.8*	Form of Retirement Security Agreement between the Company and each of Michael C. Gazmarian, James F. Petelle and Richard T. Wagner, respectively, dated September 19, 2007; each agreement is substantially identical to the form in all material respects (incorporated by reference to Exhibit 10.3 of the Company's Current Report on Form 8-K filed on September 21, 2007).
10.9*	Letter of Employment between the Company and James F. Petelle, dated August 23, 2006 (incorporated by reference to Exhibit 99.7 of the Company's Current Report on Form 8-K filed on November 16, 2006).
10.10*	Relocation Proposal between the Company and James F. Petelle, dated August 23, 2006 (incorporated by reference to Exhibit 10.20.1 of the Company's Annual Report on Form 10-K for the year ended October 3, 2009 filed on November 9, 2009).
10.11*	Addendum to Relocation Proposal between the Company and James F. Petelle, dated September 18, 2009 (incorporated by reference to Exhibit 10.20.2 of the Company's Annual Report on Form 10-K for the year ended October 3, 2009 filed on November 9, 2009).
10.12*	Amended and Restated Change in Control Severance Agreement between the Company and Richard T. Wagner dated November 14, 2006 (incorporated by reference to Exhibit 99.1 of the Company's Current Report on Form 8-K filed on February 15, 2007).
10.13*	2005 Equity Incentive Plan of Insteel Industries, Inc., as amended on November 8, 2011 (incorporated by reference to Exhibit 10.22 to the Company's Annual Report on Form 10-K for the fiscal year ended October 1, 2011 filed on November 10, 2011).
10.14*	Summary of amendments to the Insteel Industries, Inc. Director Compensation Plan (incorporated by reference to exhibit 10.23 of the Company's Annual Report on Form 10-K for the fiscal year ended September 27, 2008 filed on November 18, 2008).
10.15*	Form of Notice of Grant of Restricted Stock Units and Restricted Stock Unit Agreement (incorporated by reference to Exhibit 10.1 of the Company's Current Report on Form 8-K filed on January 23, 2009).

Exhibit Number	Description
10.16*	Insteel Industries, Inc. Return on Capital Incentive Compensation Plan (as amended and restated effective August 12, 2008) (incorporated by reference to Exhibit 10.1 of the Company's Current Report on Form 8-K filed on February 13, 2009).
10.17*	Form of Amendment to 2005 Equity Incentive Plan of Insteel Industries, Inc. dated August 20, 2013 (incorporated by reference to Exhibit 10.20 of the Company's Annual Report on Form 10-K filed on October 29, 2013).
10.18*	2015 Equity Incentive Plan of Insteel Industries, Inc. (incorporated by reference to Exhibit 99 filed with the Company's Registration Statement on Form S-8, filed with the SEC on February 17, 2015 (File No. 333-202128)).
21.1	List of Subsidiaries of Insteel Industries, Inc. at October 1, 2016.
23.1	Consent of Independent Registered Public Accounting Firm.
31.1	Certification of the Chief Executive Officer pursuant to Rule 13a-14(a) of the Securities Exchange Act of 1934, as adopted pursuant to Section 302 of the Sarbanes-Oxley Act of 2002.
31.2	Certification of the Chief Financial Officer pursuant to Rule 13a-14(a) of the Securities Exchange Act of 1934, as adopted pursuant to Section 302 of the Sarbanes-Oxley Act of 2002.
32.1	Certification of the Chief Executive Officer pursuant to 18 U.S.C. Section 1350, as adopted pursuant to Section 906 of the Sarbanes-Oxley Act of 2002.
32.2	Certification of the Chief Financial Officer pursuant to 18 U.S.C. Section 1350, as adopted pursuant to Section 906 of the Sarbanes-Oxley Act of 2002.
101	The following financial information from our Annual Report on Form 10-K for the fiscal year ended October 1, 2016, filed on October 28, 2016, formatted in XBRL (eXtensible Business Reporting Language) includes: (i) the Consolidated Statements of Operations for the years ended October 1, 2016, October 3, 2015 and September 27, 2014, (ii) the Consolidated Statements of Comprehensive Income for the years ended October 1, 2016, October 3, 2015 and September 27, 2014, (iii) the Consolidated Balance Sheets as of October 1, 2016 and October 3, 2015, (iv) the Consolidated Statements of Cash Flows for the years ended October 1, 2016, October 3, 2015 and September 27, 2014, (v) the Consolidated Statements of Shareholders' Equity as of October 1, 2016, October 3, 2015 and September 27, 2014 and (vi) the Notes to Consolidated Financial Statements.

* *Management contracts or compensation plans or arrangements in which directors or executive officers are eligible to participate. Our SEC file number reference for documents filed with the SEC pursuant to the Securities Exchange Act of 1934, as amended, is 1-09929.*

This page intentionally left blank

This page intentionally left blank



CORPORATE INFORMATION

BOARD OF DIRECTORS

Charles B. Newsome^(1,2,4)
Executive Vice President
Johnson Concrete Company

W. Allen Rogers II^(1,3,4)
Principal
Ewing Capital Partners, LLC
Partner
Peter Browning Partners, LLC

Jon M. Ruth^(1,2)
Retired Vice President
Cargill

Joseph A. Rutkowski^(2,3)
Principal
Winyah Advisors LLC

H.O. Woltz III⁽⁴⁾
Chairman, President and
Chief Executive Officer
Insteel Industries, Inc.

⁽¹⁾ Member of the Audit Committee

⁽²⁾ Member of the Executive Compensation Committee

⁽³⁾ Member of the Nominating and Governance Committee

⁽⁴⁾ Member of the Executive Committee

EXECUTIVE OFFICERS

H.O. Woltz III
Chairman, President and
Chief Executive Officer

Michael C. Gazmarian
Vice President, Chief Financial Officer
and Treasurer

James F. Petelle
Vice President—Administration
and Secretary

Richard T. Wagner
Vice President and General Manager—
Concrete Reinforcing Products Business
Unit, Insteel Wire Products Company

SHAREHOLDER INFORMATION

Corporate Headquarters
1373 Boggs Drive
Mount Airy, North Carolina 27030
(336) 786-2141

Independent Registered Public Accounting Firm
Grant Thornton LLP
Charlotte, North Carolina

Annual Meeting
Insteel shareholders are invited to attend our annual meeting, which will be held on Tuesday, February 7, 2017 at 9:00 a.m. ET at the Cross Creek Country Club, 1129 Greenhill Road, Mount Airy, North Carolina 27030.

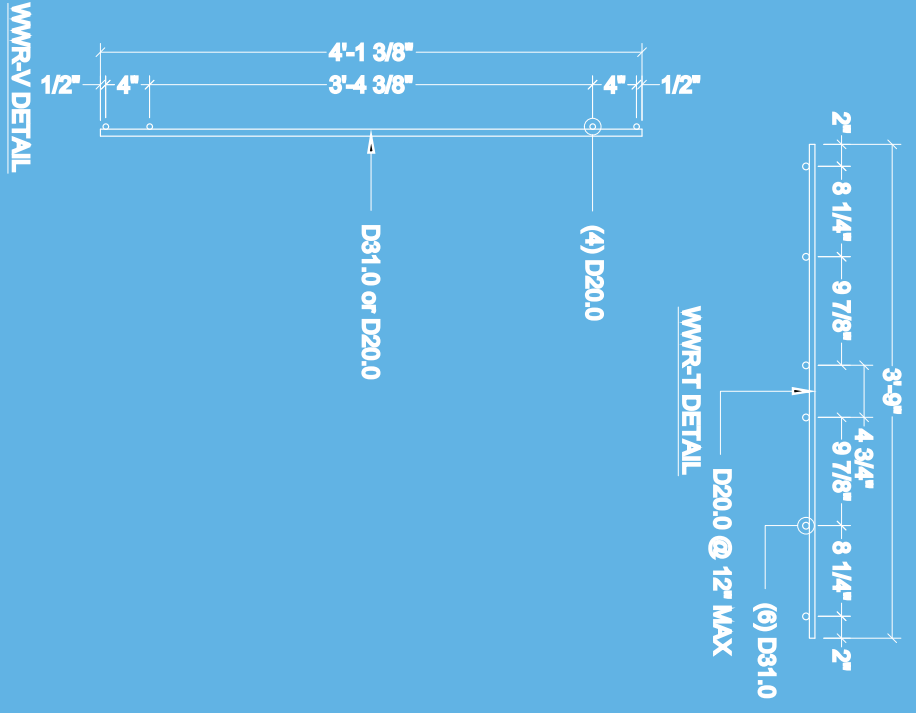
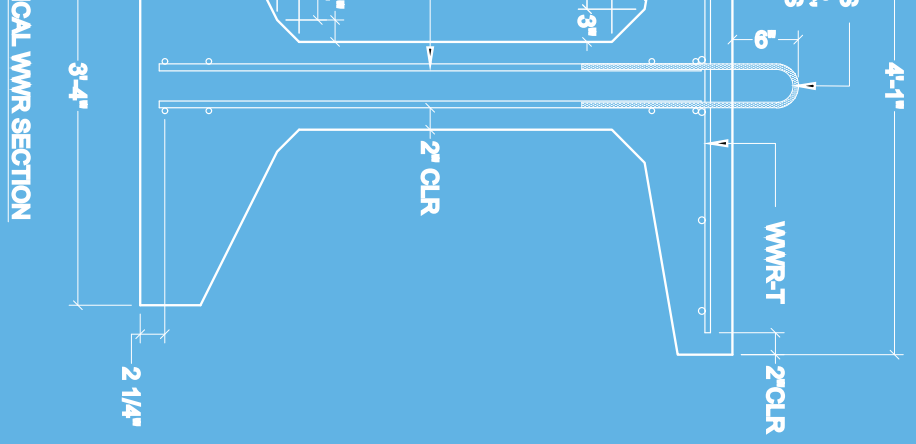
Common Stock
The common stock of Insteel Industries, Inc. is traded on the NASDAQ Global Select Market under the symbol IINN. As of October 25, 2016, there were 675 shareholders of record.

Shareholder Services
For change of name, address or ownership of stock; to replace lost stock certificates; or to consolidate accounts, please contact:
American Stock Transfer & Trust Company
Operations Center
6201 15th Avenue
Brooklyn, New York 11219
(866) 627-2704
www.amstock.com

Investor Relations
For information on the Company, additional copies of this report or other financial information, contact Michael C. Gazmarian, Vice President, Chief Financial Officer and Treasurer, at the Company's headquarters. You may also visit the Investors section on the Company's web site at <http://investor.insteel.com/>.

FORWARD-LOOKING STATEMENTS

Any statements in this 2016 Annual Report that are not entirely historical in nature constitute forward-looking statements within the meaning of the safe harbor provisions of the Private Securities Litigation Reform Act of 1995. For important information regarding forward-looking statements, please read the "Cautionary Note Regarding Forward-Looking Statements" on page 4 of the Company's Annual Report on Form 10-K for the year ended October 1, 2016, which is included as part of this 2016 Annual Report.



1373 Boggs Drive
 Mount Airy, North Carolina 27030
 www.insteel.com